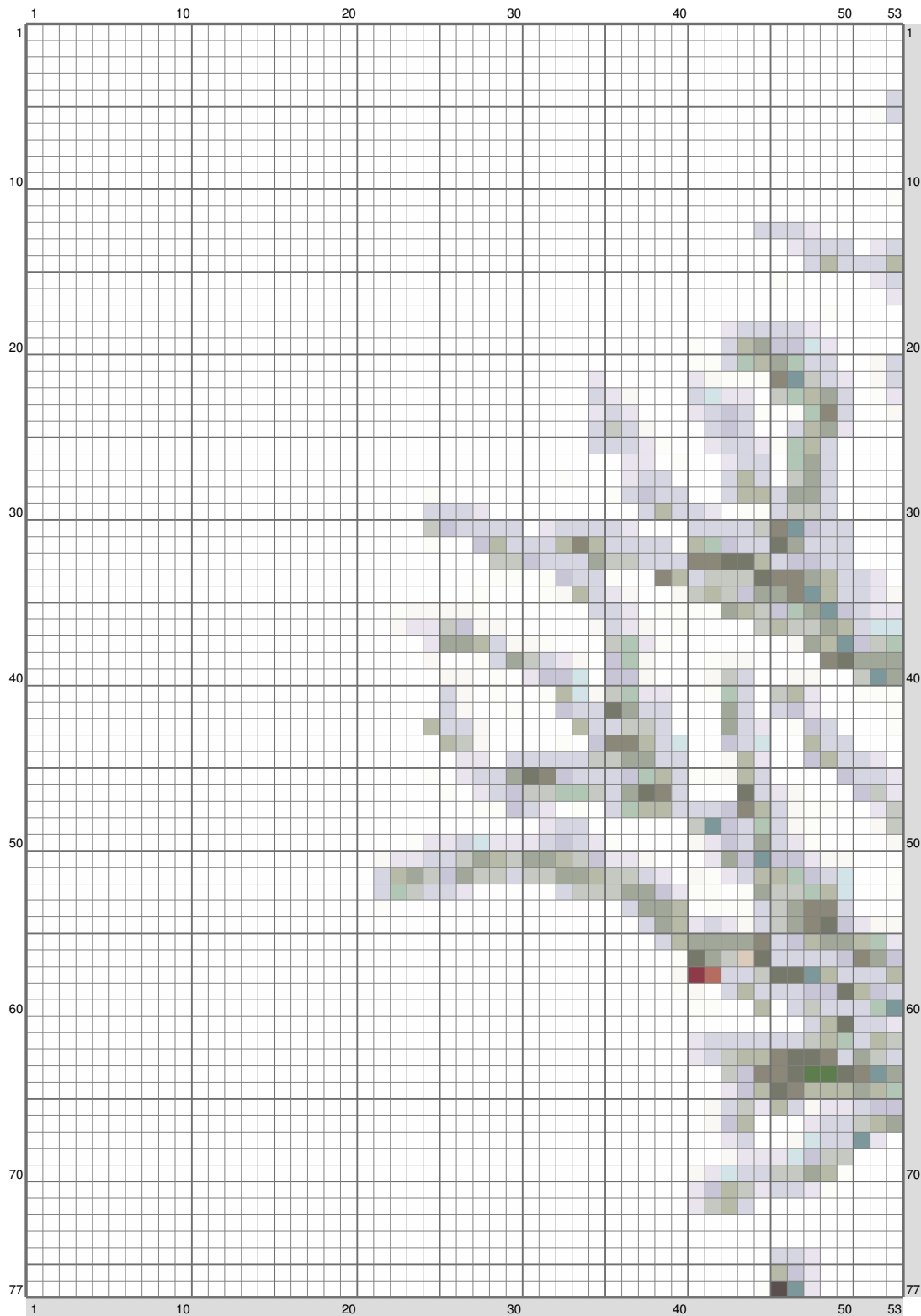
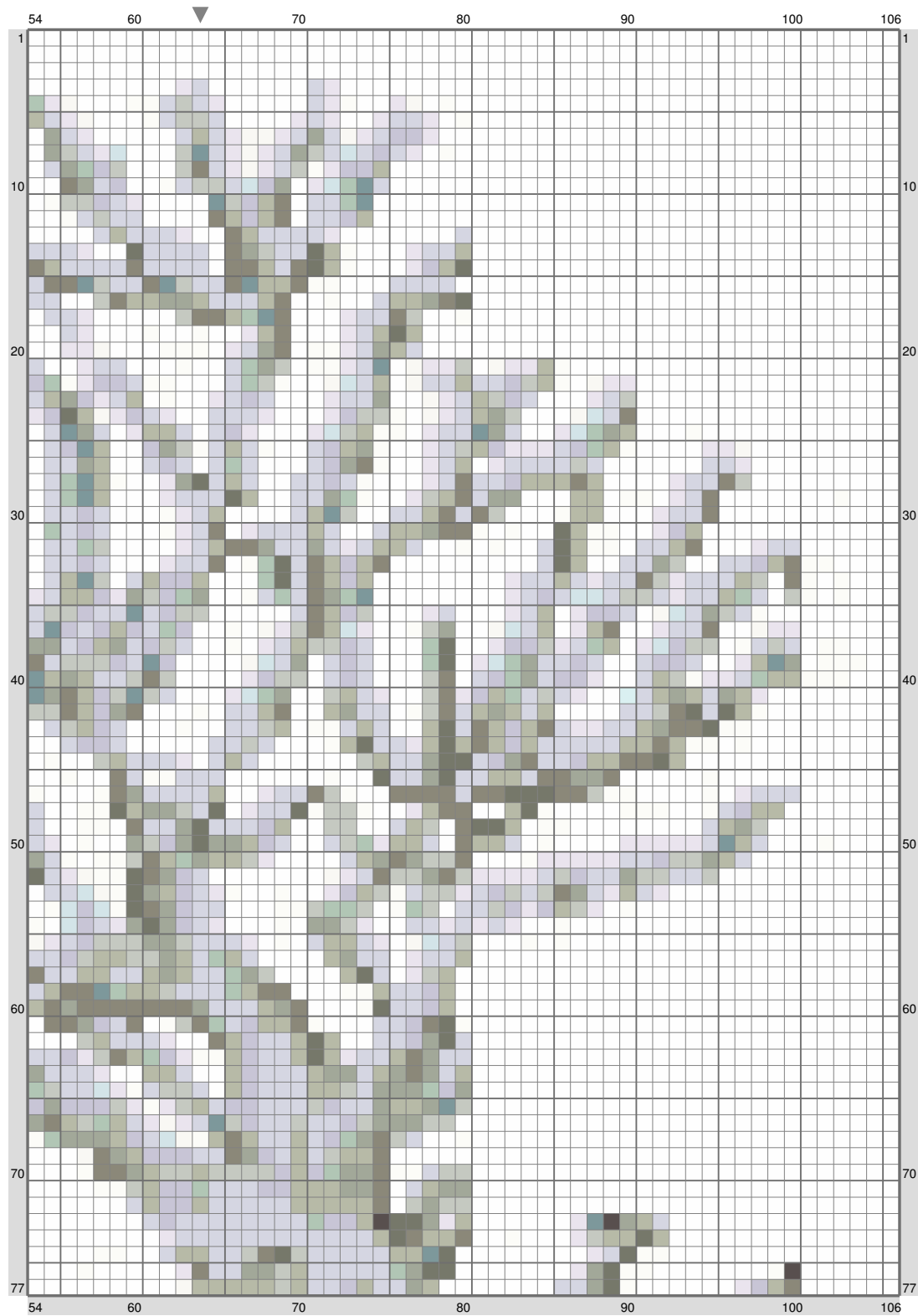


Untitled

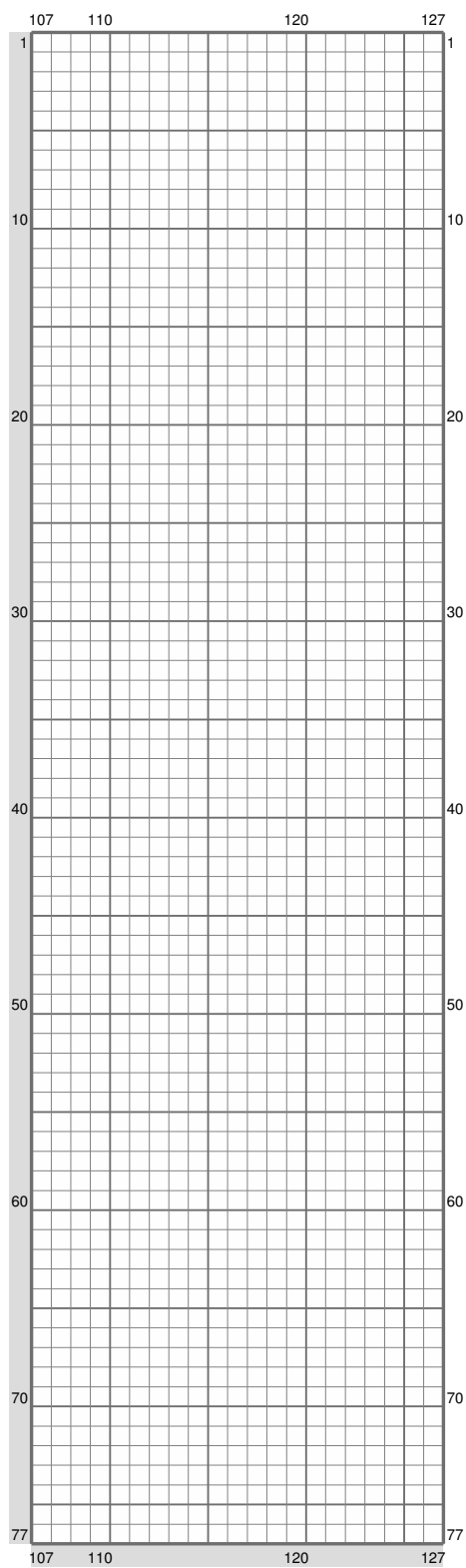


(This chart is printed using KG-Chart LE for Cross Stitch.)

Untitled

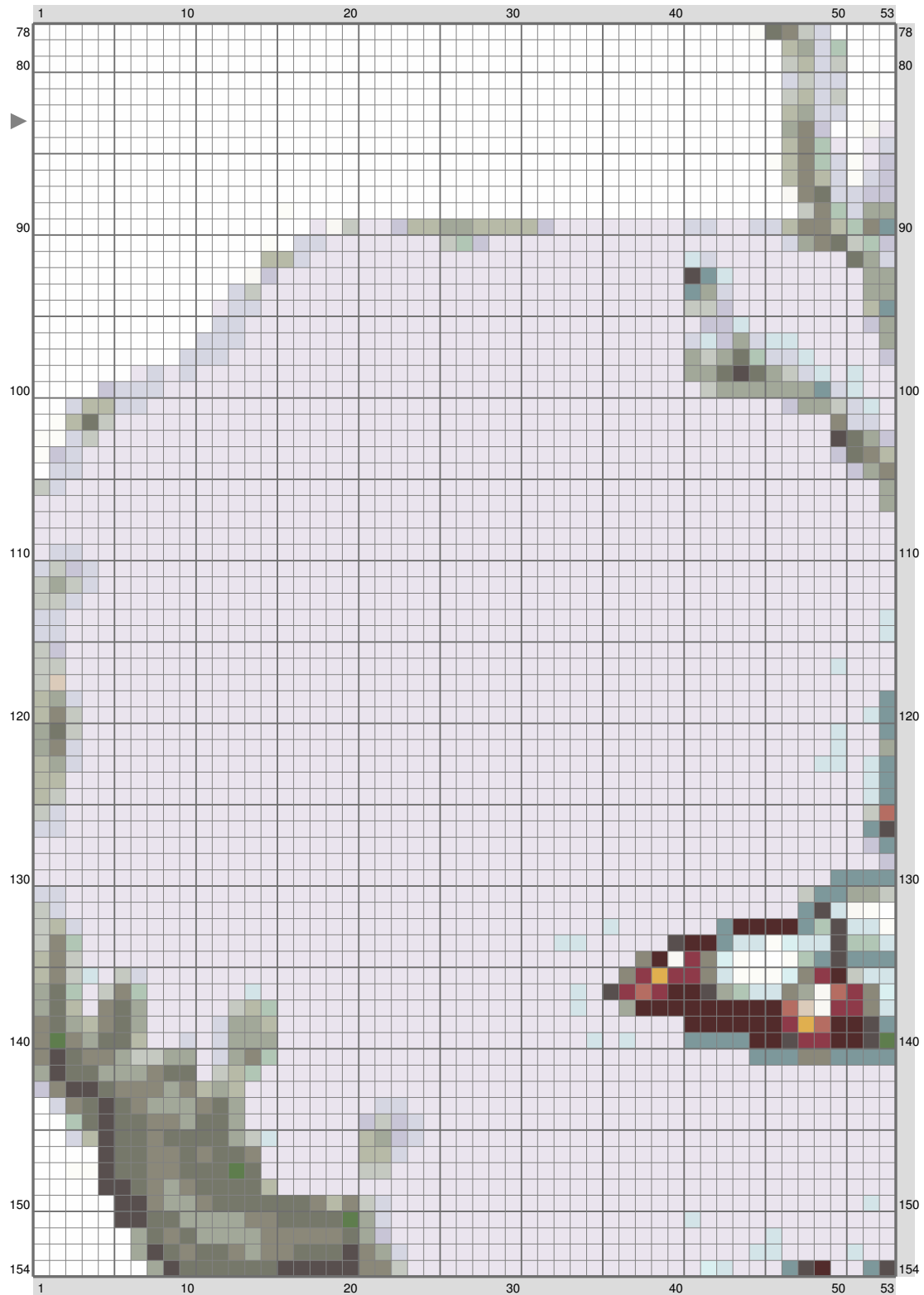


Untitled



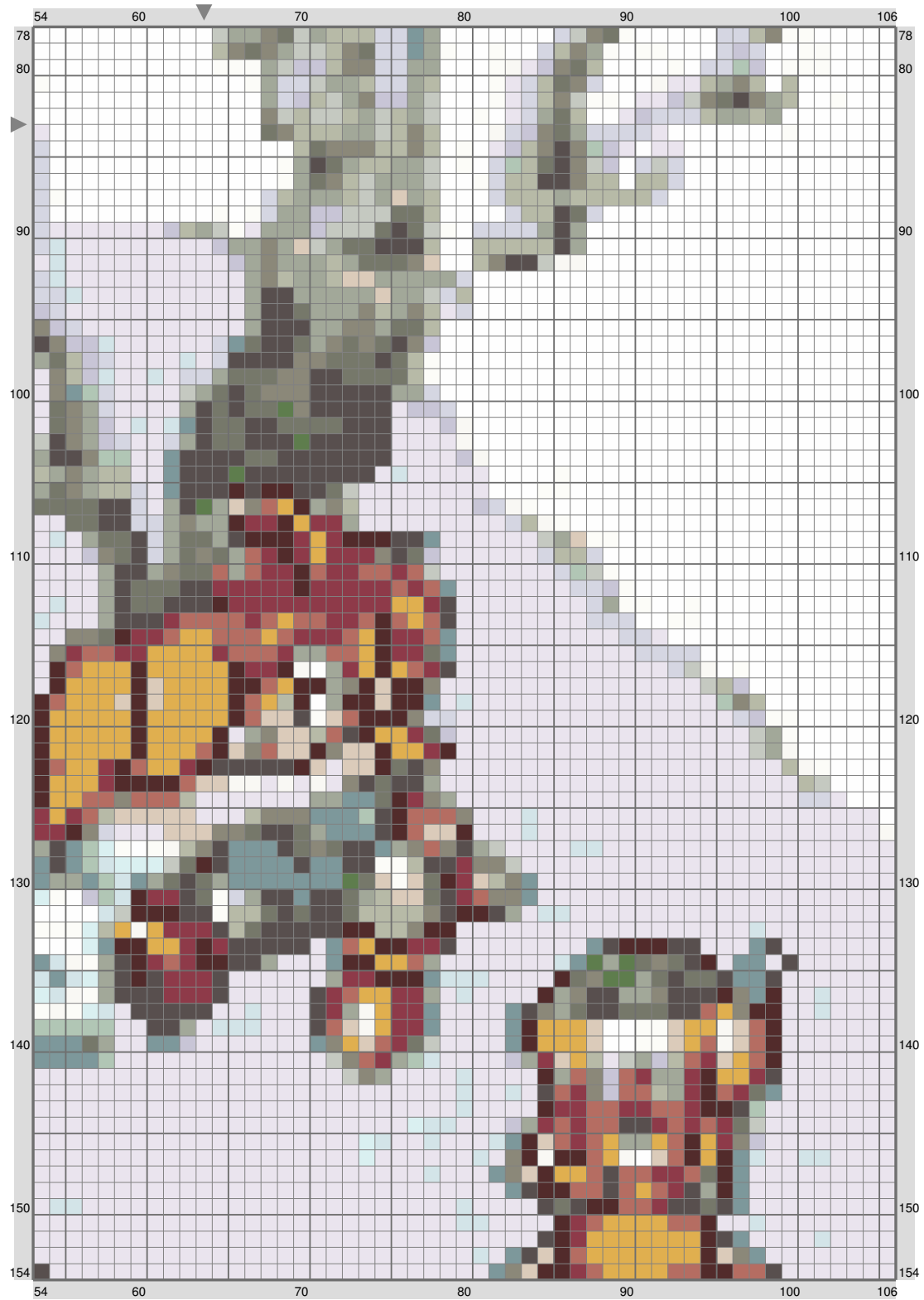
(This chart is printed using KG-Chart LE for Cross Stitch.)

Untitled



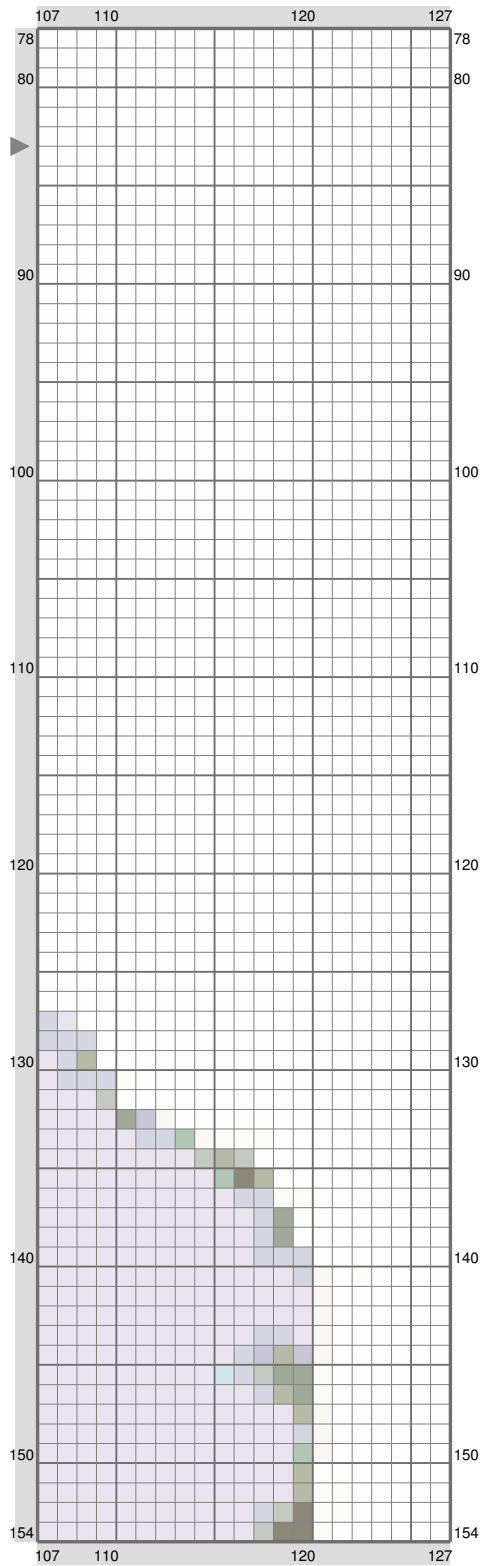
(This chart is printed using KG-Chart LE for Cross Stitch.)

Untitled



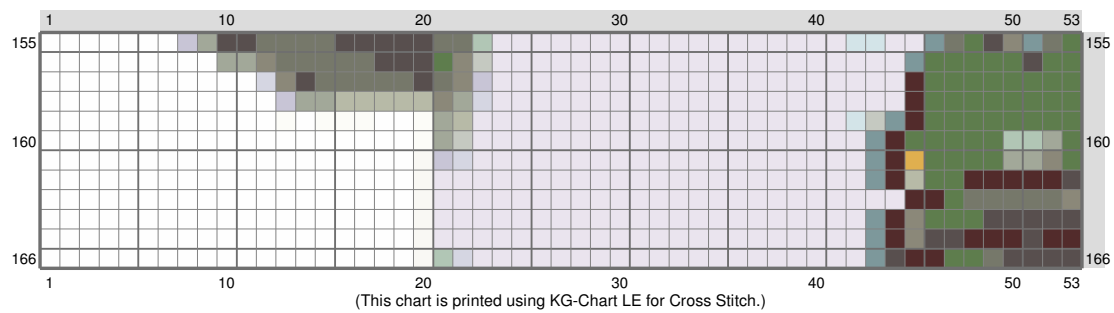
(This chart is printed using KG-Chart LE for Cross Stitch.)

Untitled

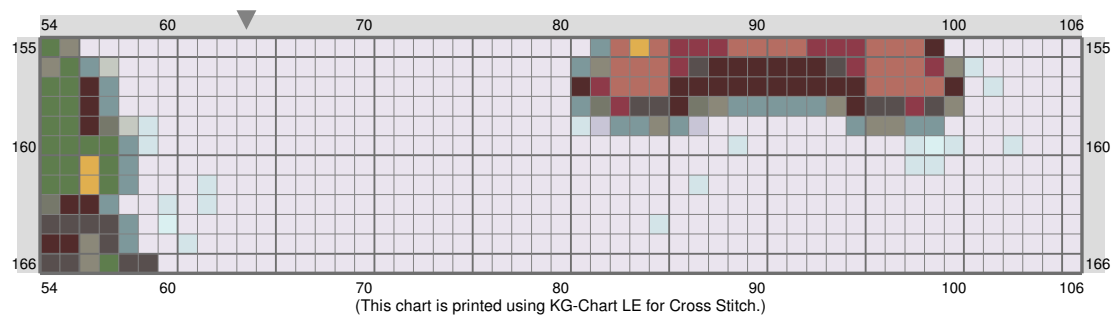


(This chart is printed using KG-Chart LE for Cross Stitch.)

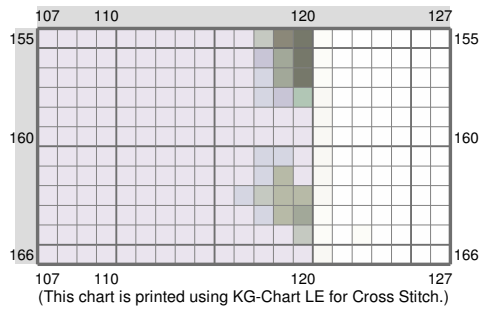
Untitled



Untitled

























Untitled



Stitch Count: 127w x 166h
 Finished Size: 46.08 cm x 60.23 cm (14 ct./inch)
 Cloth: Aida
 Cloth's Color: White
 # of colors: 22 Colors

Color Table (DMC)

Cross Stitch

	3371	(227 ct)
	844	(317 ct)
	987	(87 ct)
	3787	(316 ct)
	221	(155 ct)
	632	(139 ct)
	640	(387 ct)
	3820	(147 ct)
	926	(205 ct)
	3022	(477 ct)
	523	(509 ct)
	3817	(125 ct)
	3023	(364 ct)
	613	(62 ct)
	318	(291 ct)
	415	(1006 ct)
	3753	(177 ct)
	762	(5251 ct)
	3841	(21 ct)
	3865	(156 ct)
	BLANC	(378 ct)
	B5200	(10285 ct)