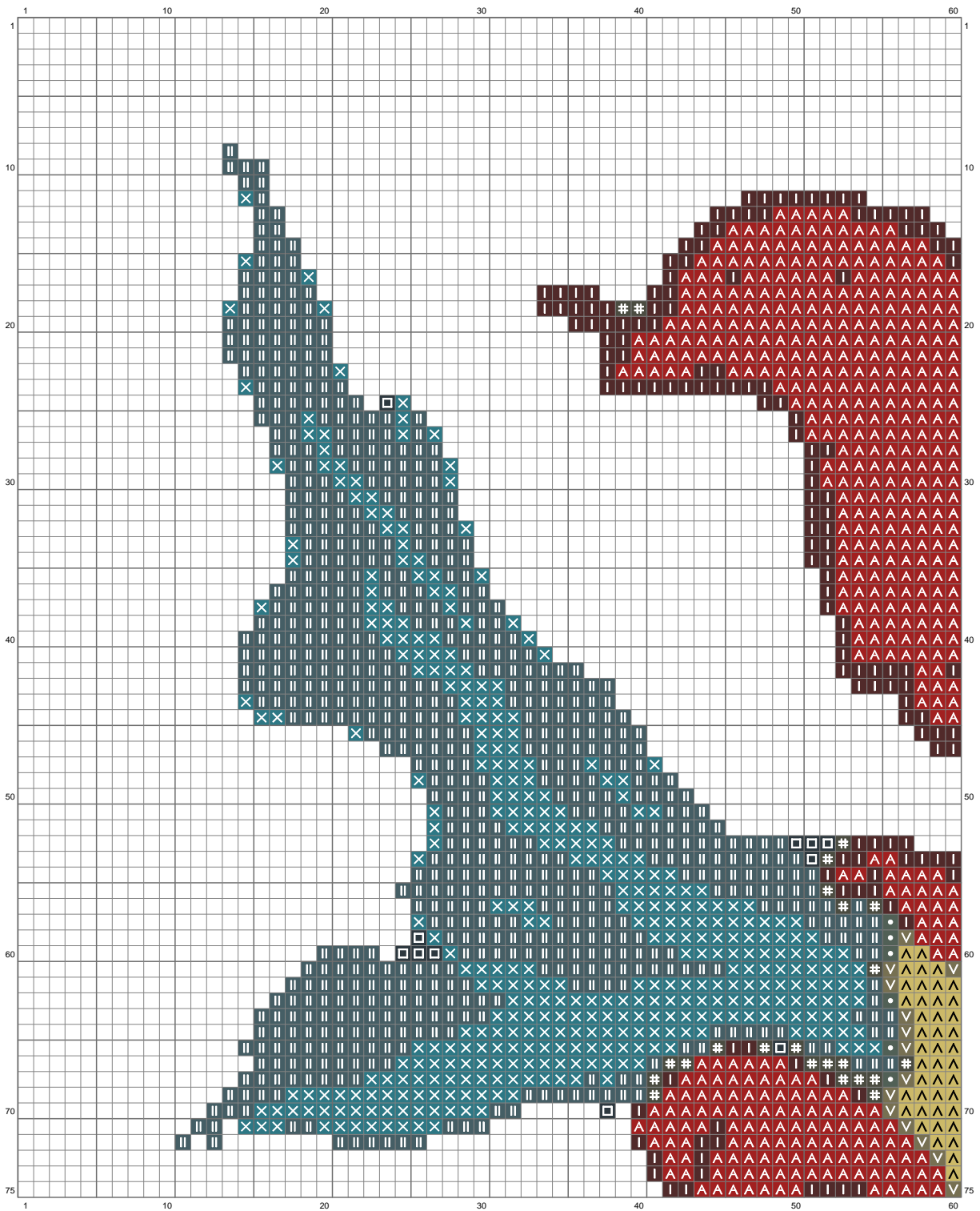
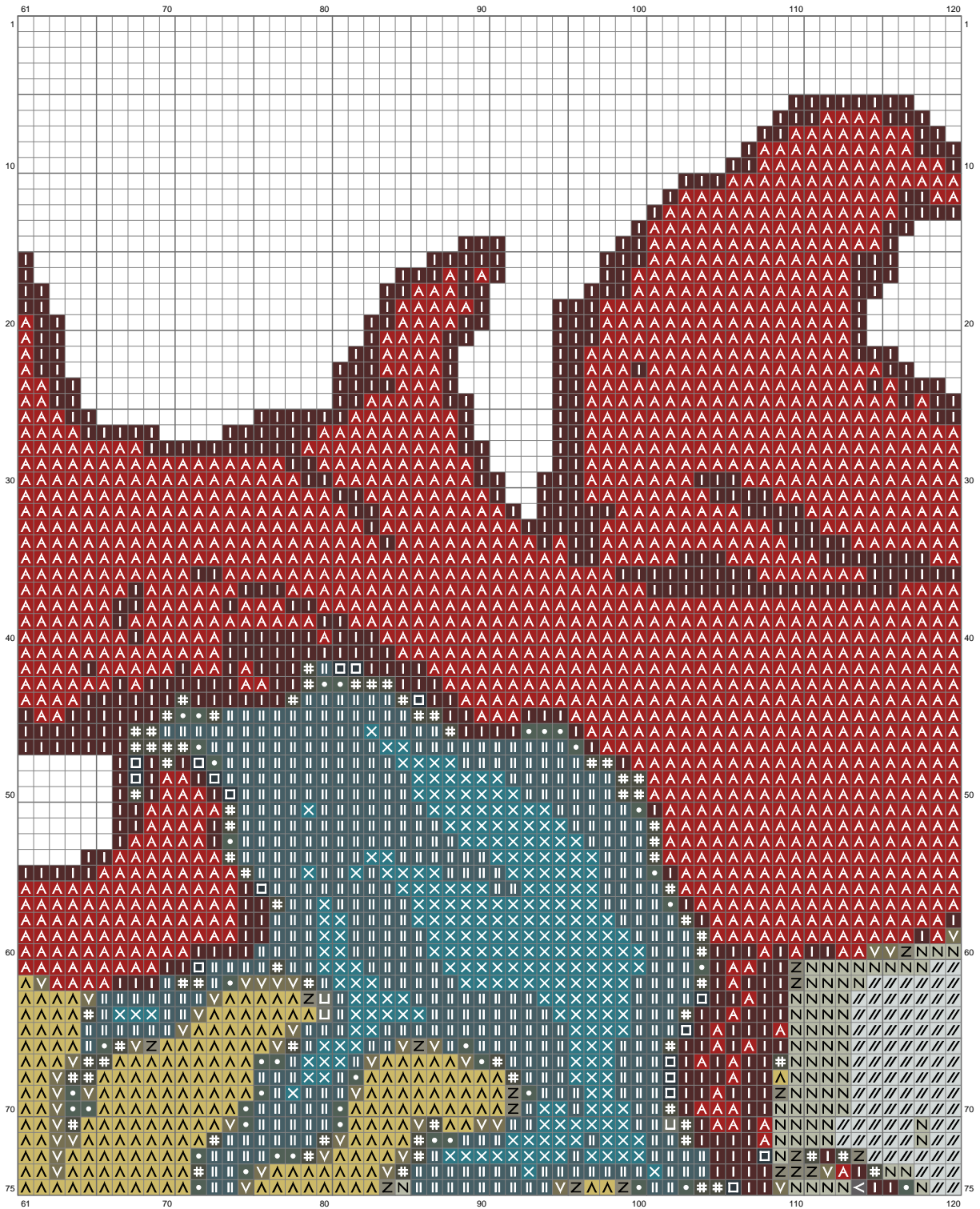


Ariel Horror



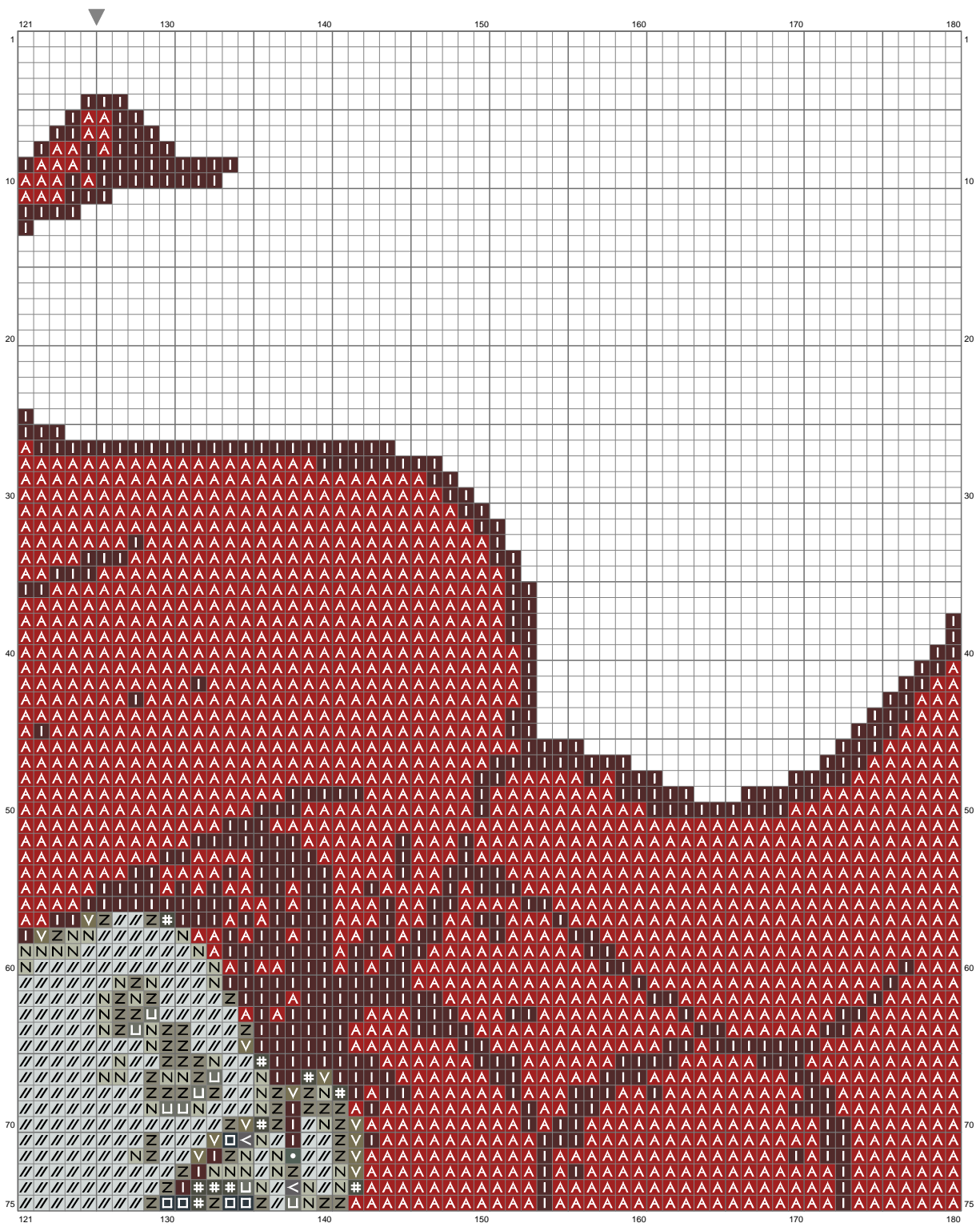
(This chart is printed using KG-Chart LE for Cross Stitch.)

Ariel Horror



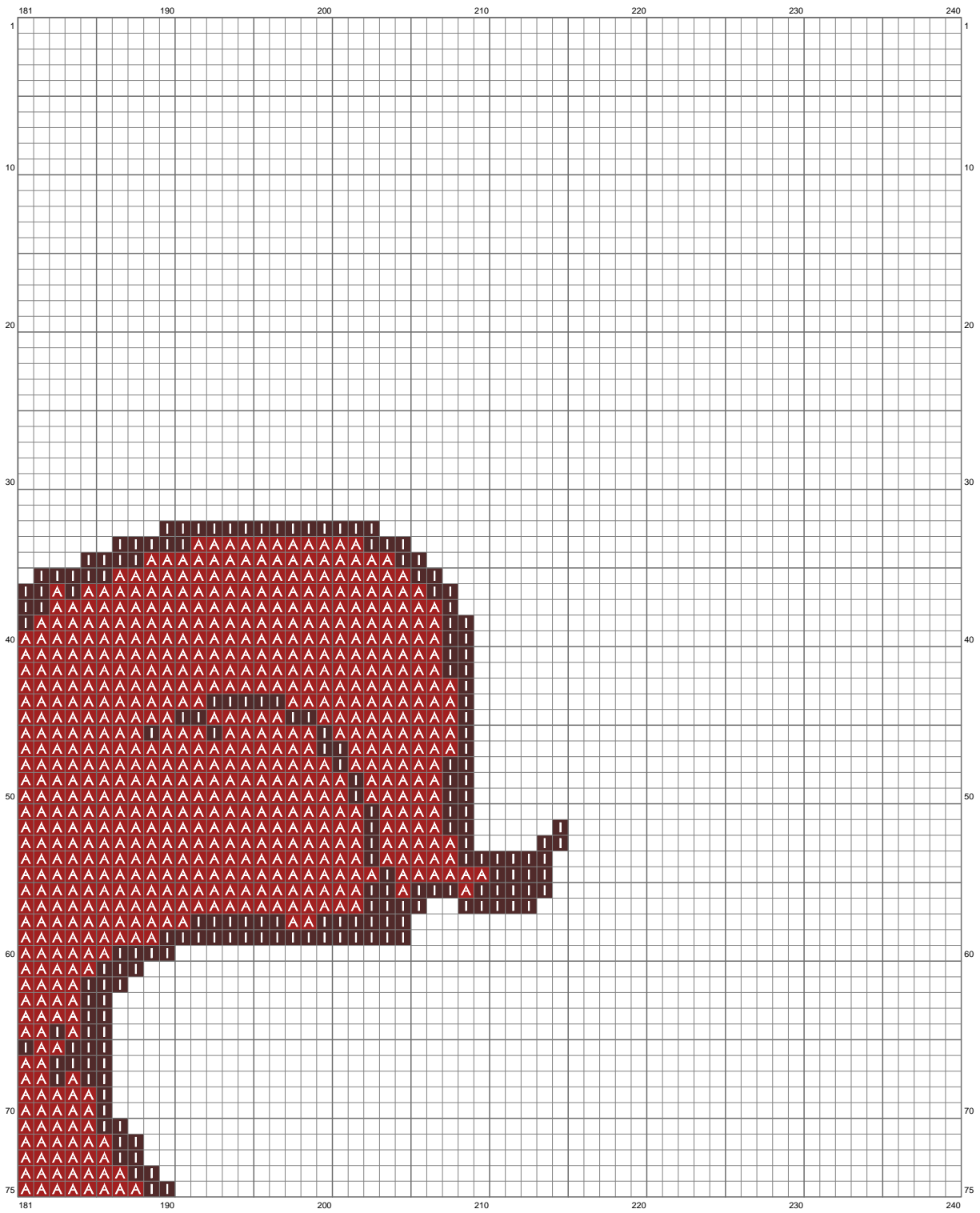
(This chart is printed using KG-Chart LE for Cross Stitch.)

Ariel Horror



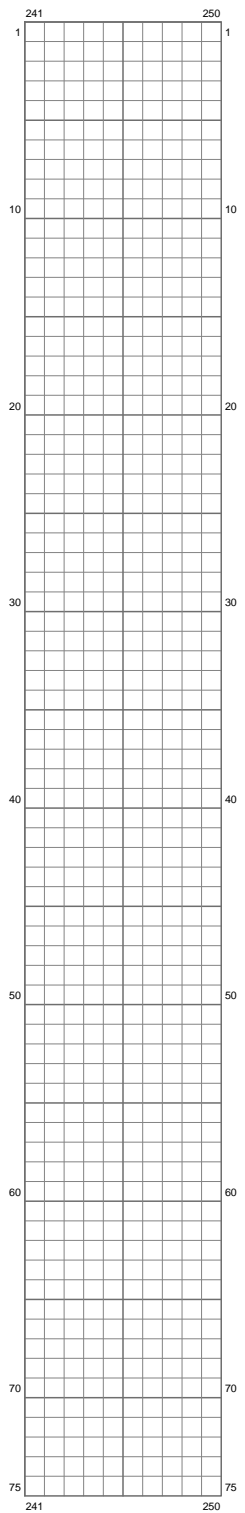
(This chart is printed using KG-Chart LE for Cross Stitch.)

Ariel Horror



(This chart is printed using KG-Chart LE for Cross Stitch.)

Ariel Horror

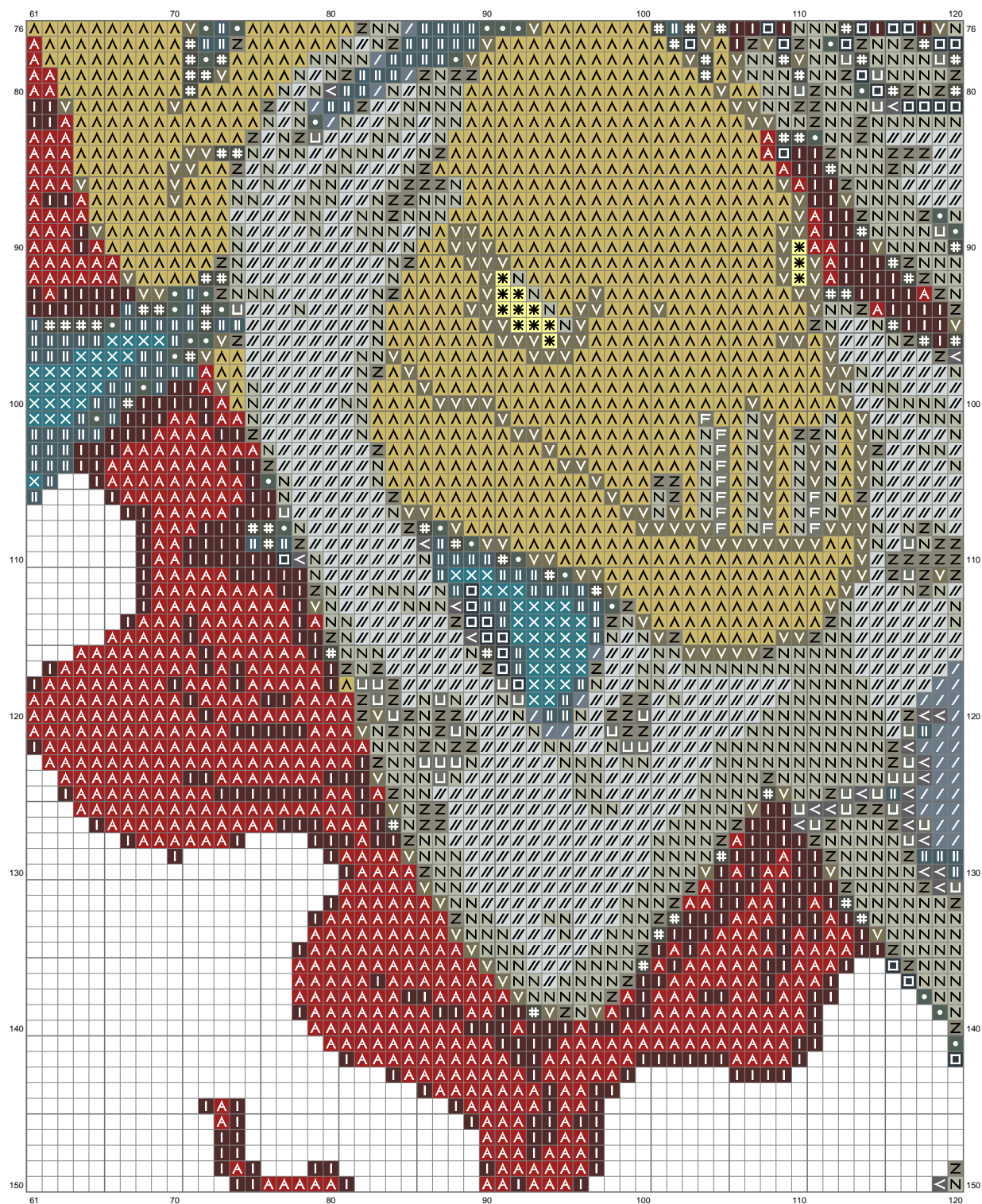


(This chart is printed using KG-Chart LE for Cross Stitch.)

Ariel Horror

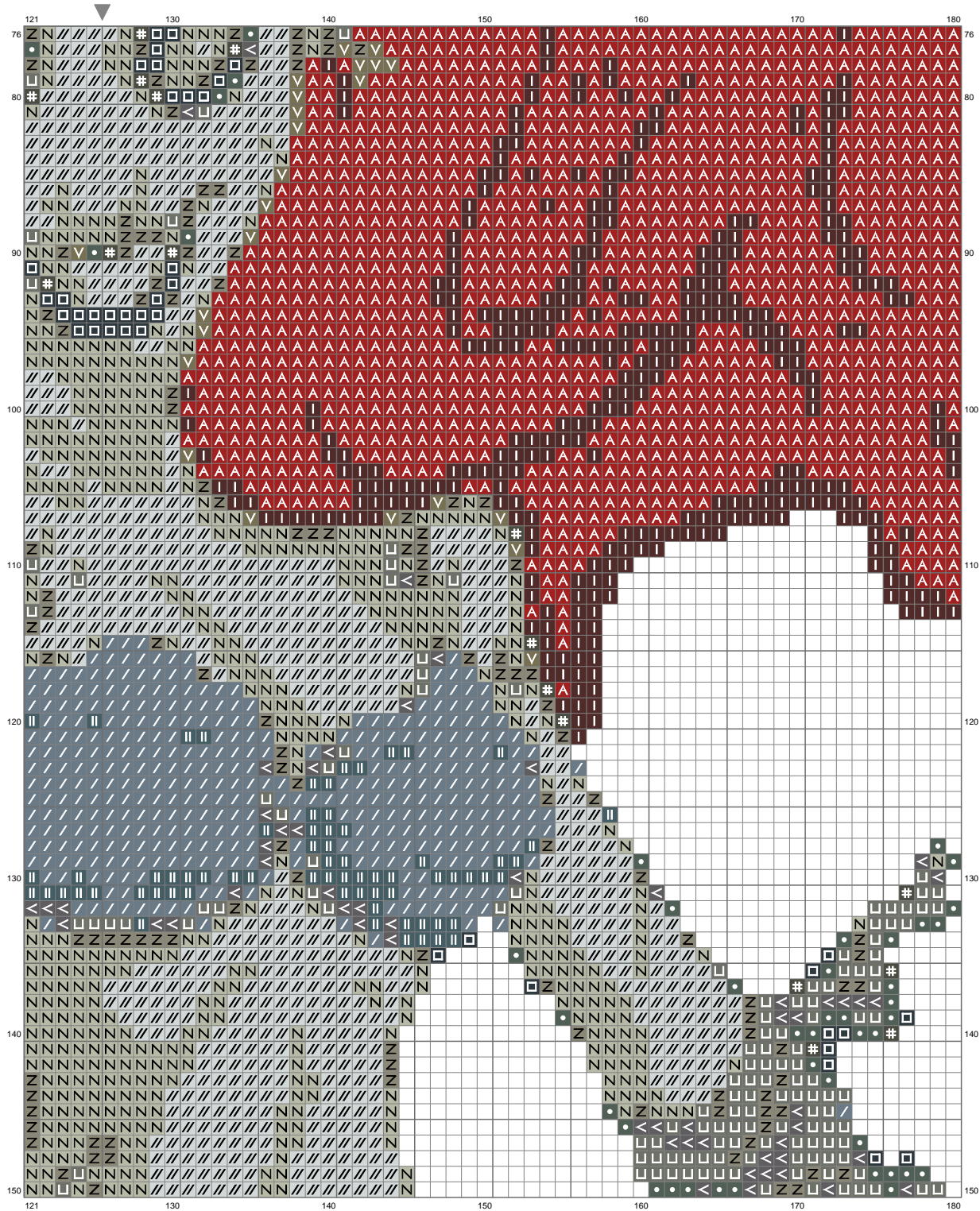


Ariel Horror



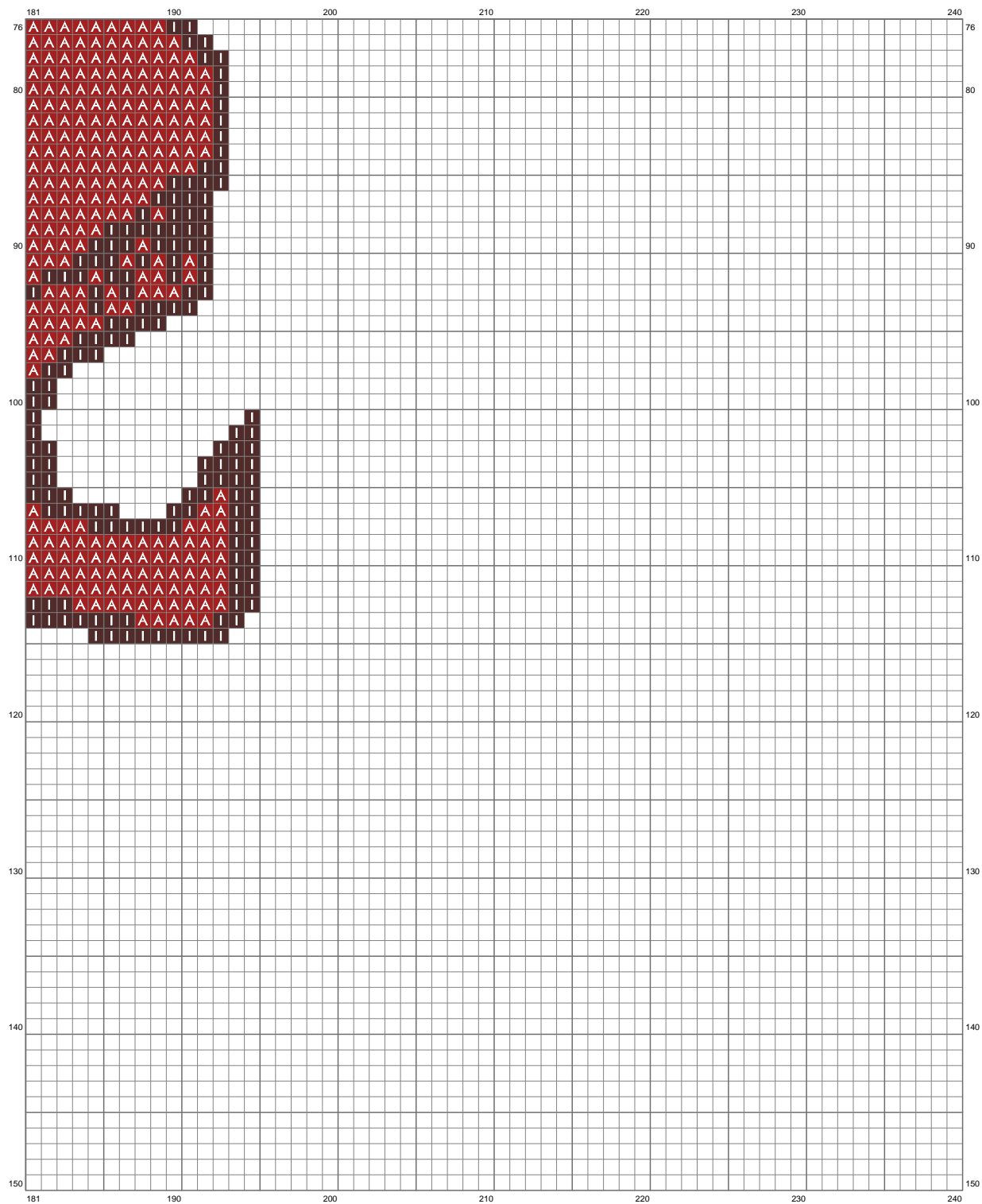
(This chart is printed using KG-Chart LE for Cross Stitch.)

Ariel Horror



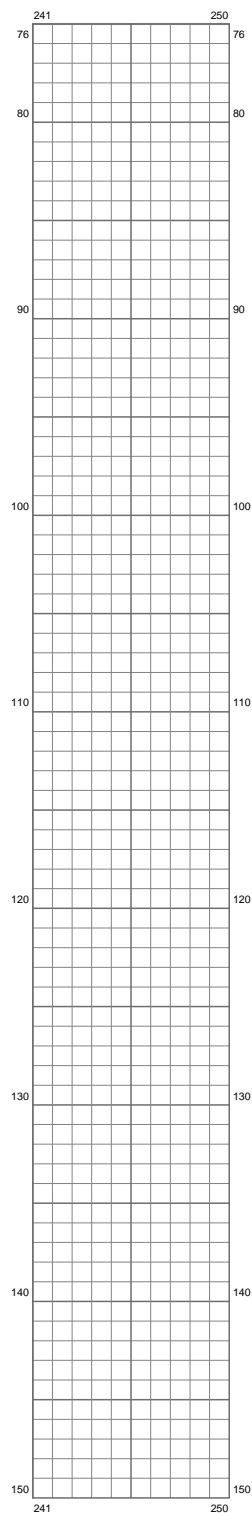
(This chart is printed using KG-Chart LE for Cross Stitch.)

Ariel Horror



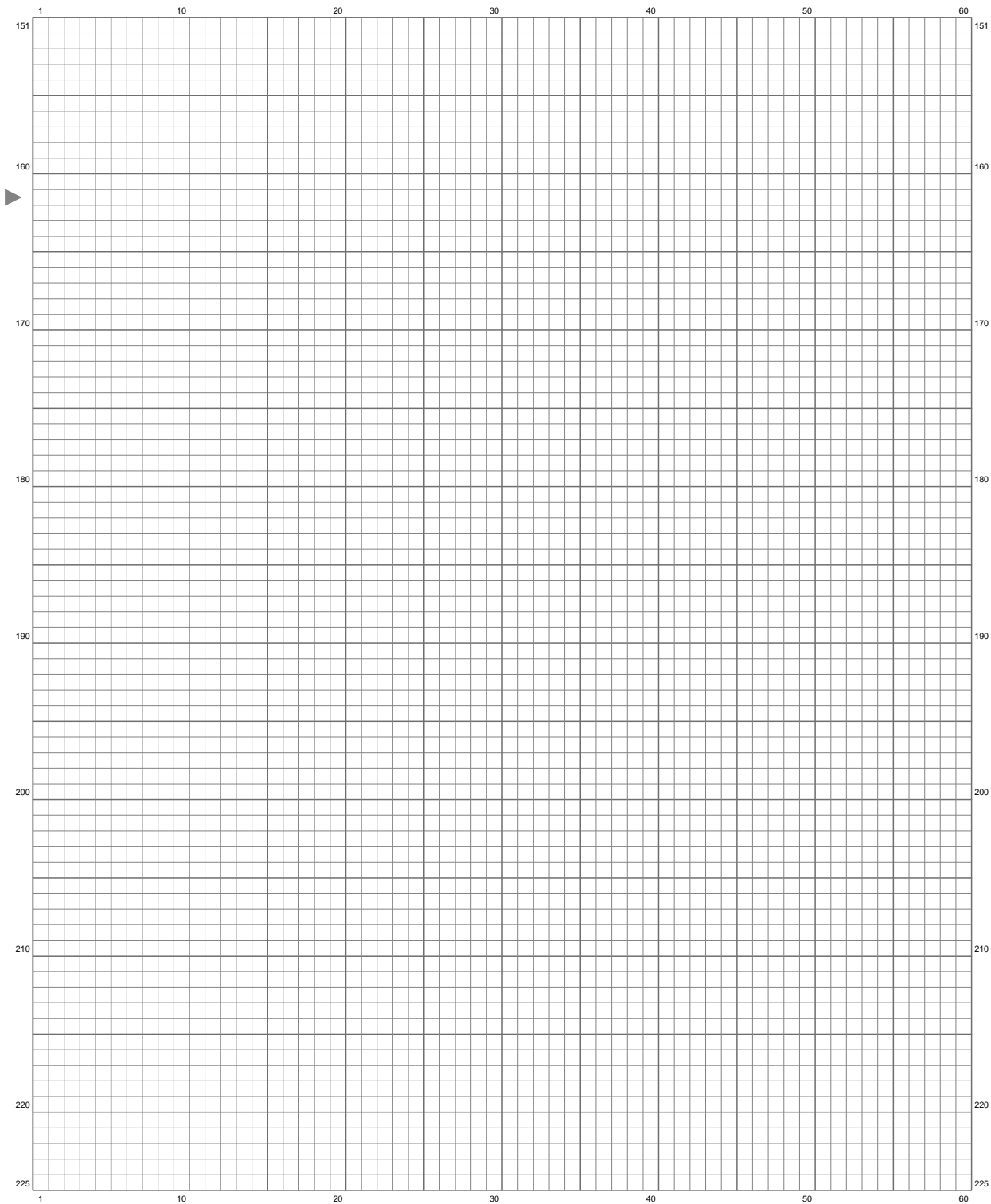
(This chart is printed using KG-Chart LE for Cross Stitch.)

Ariel Horror



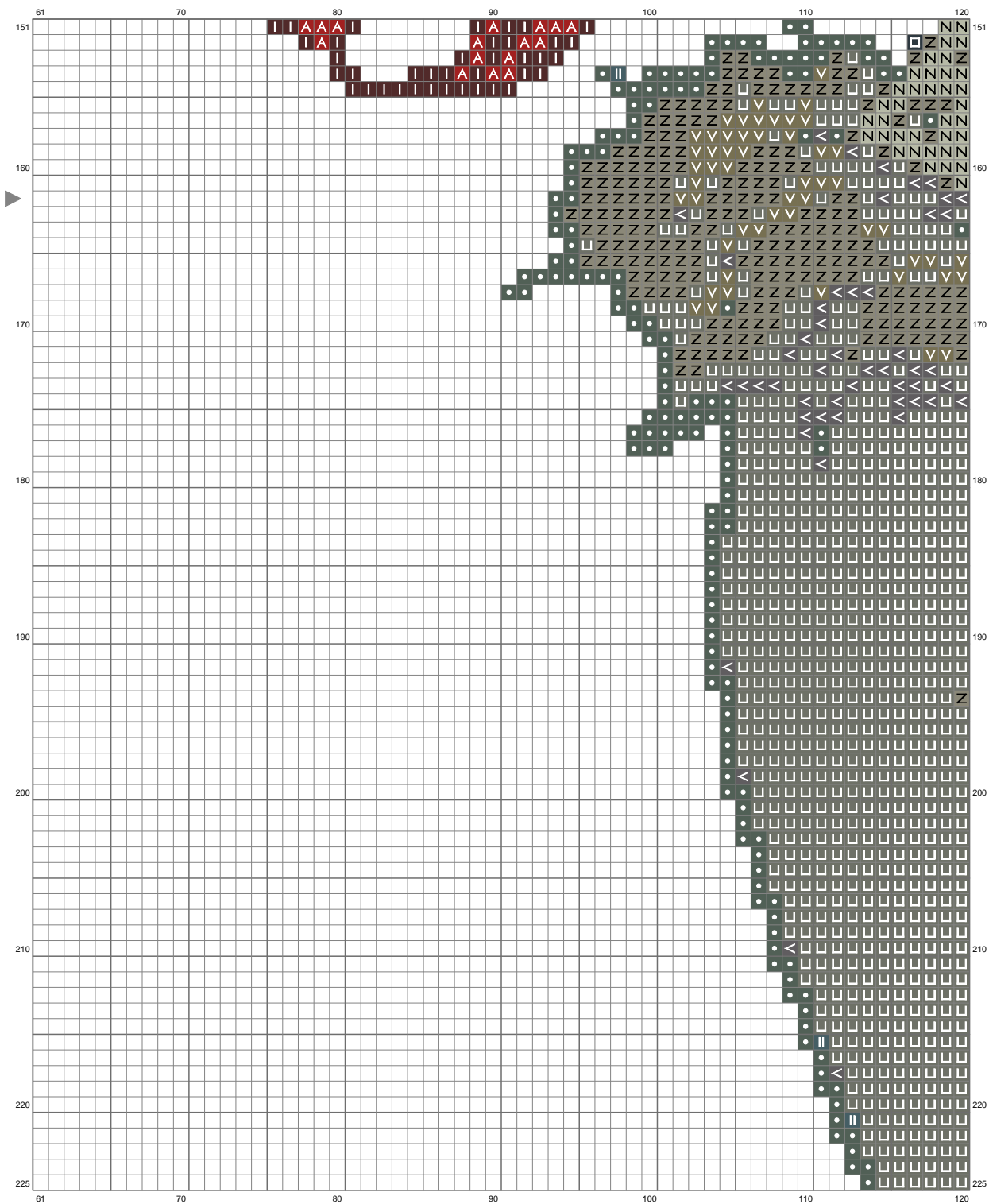
(This chart is printed using KG-Chart LE for Cross Stitch.)

Ariel Horror



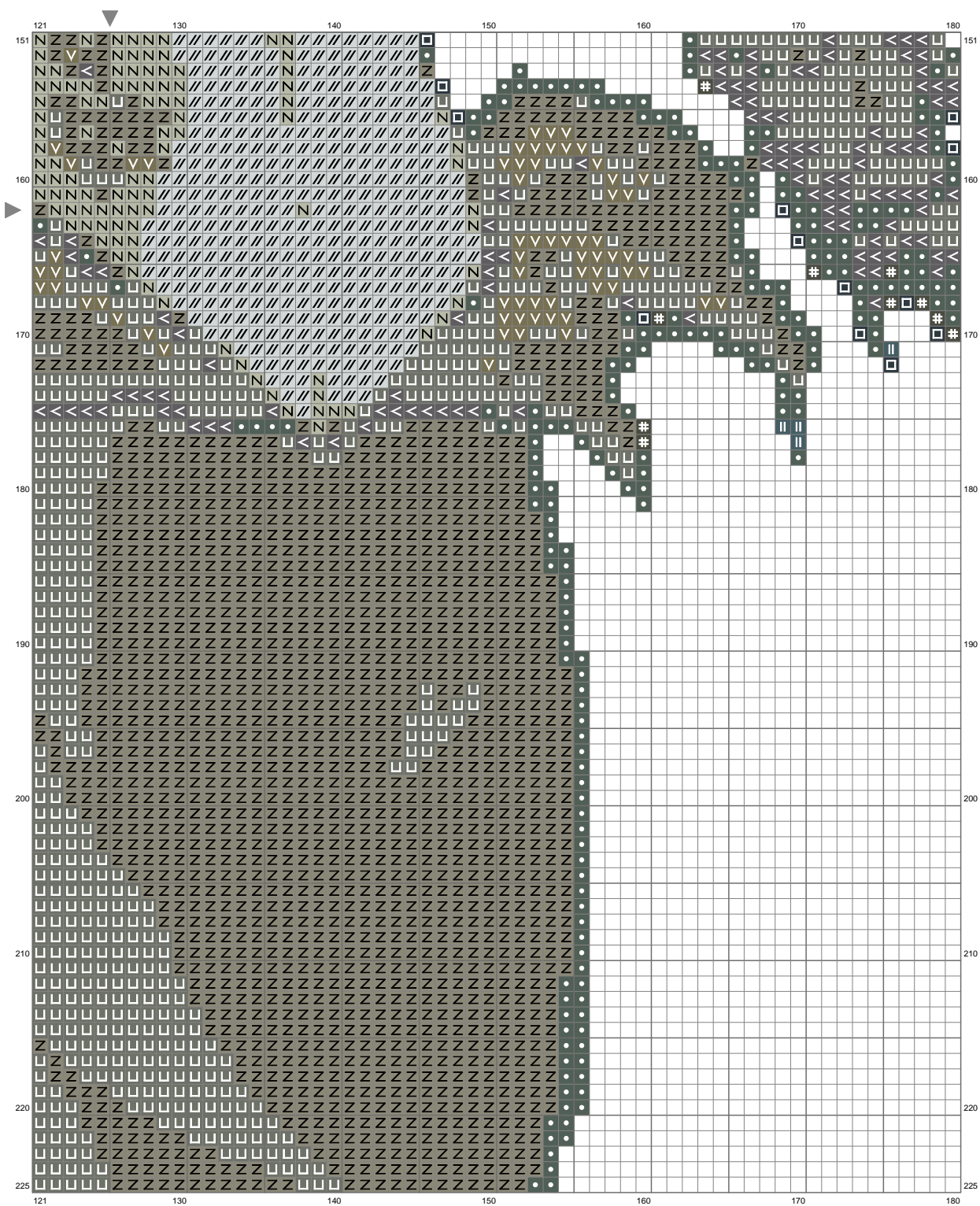
(This chart is printed using KG-Chart LE for Cross Stitch.)

Ariel Horror

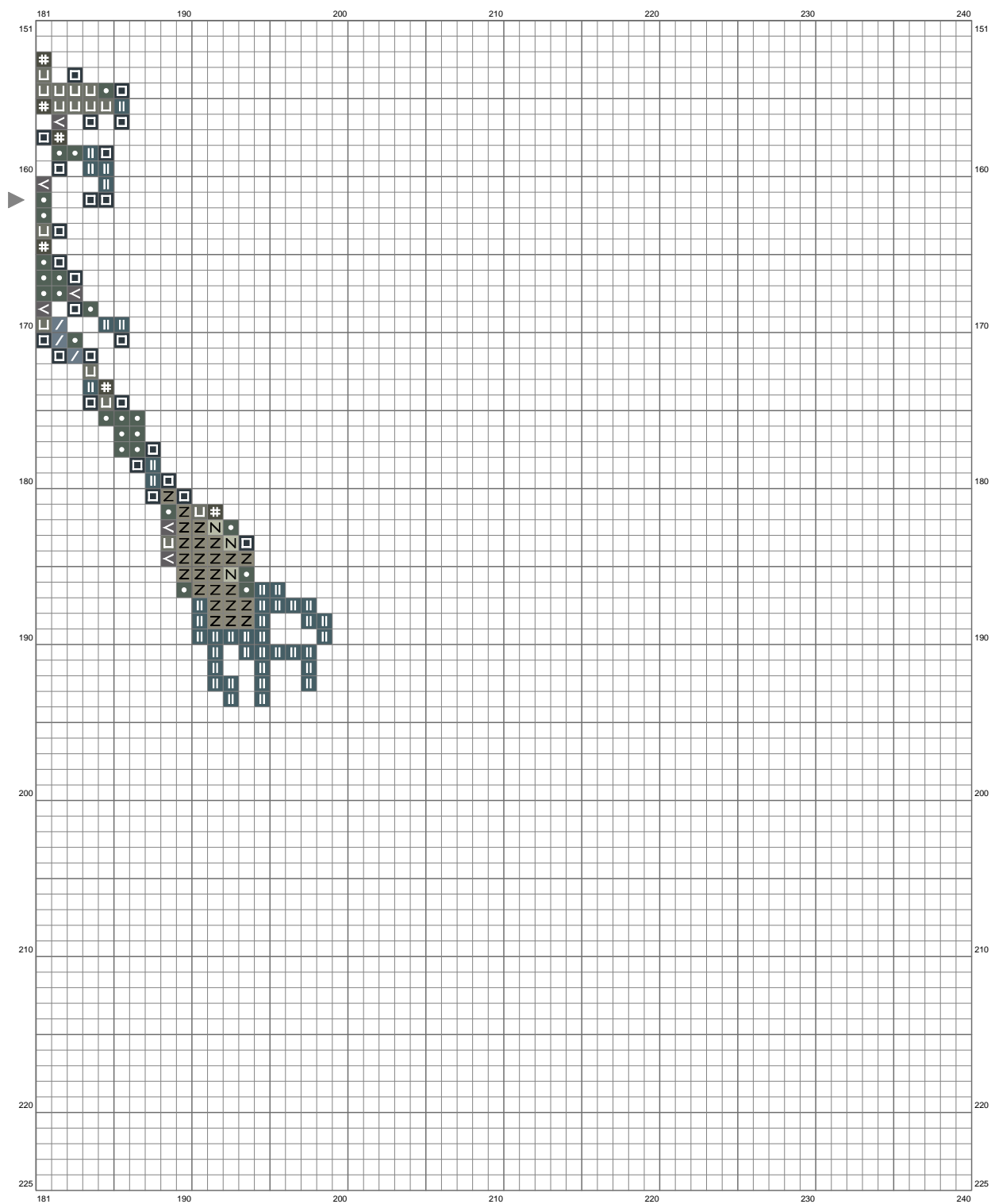


(This chart is printed using KG-Chart LE for Cross Stitch.)

Ariel Horror

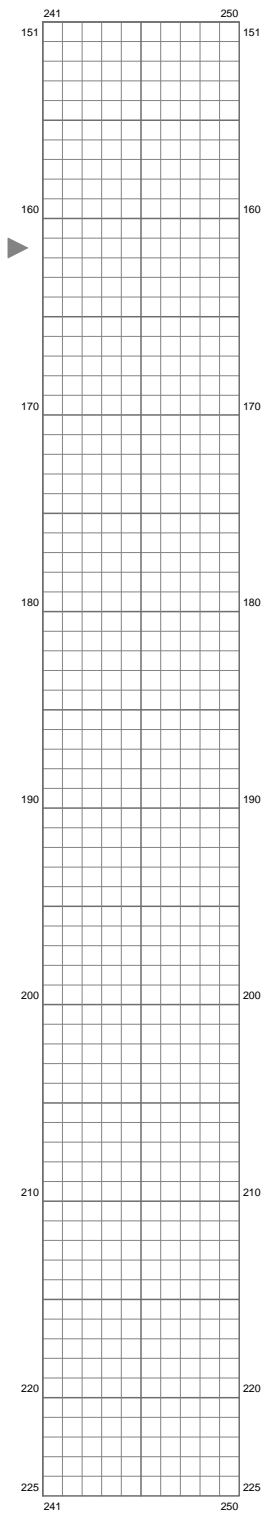


Ariel Horror



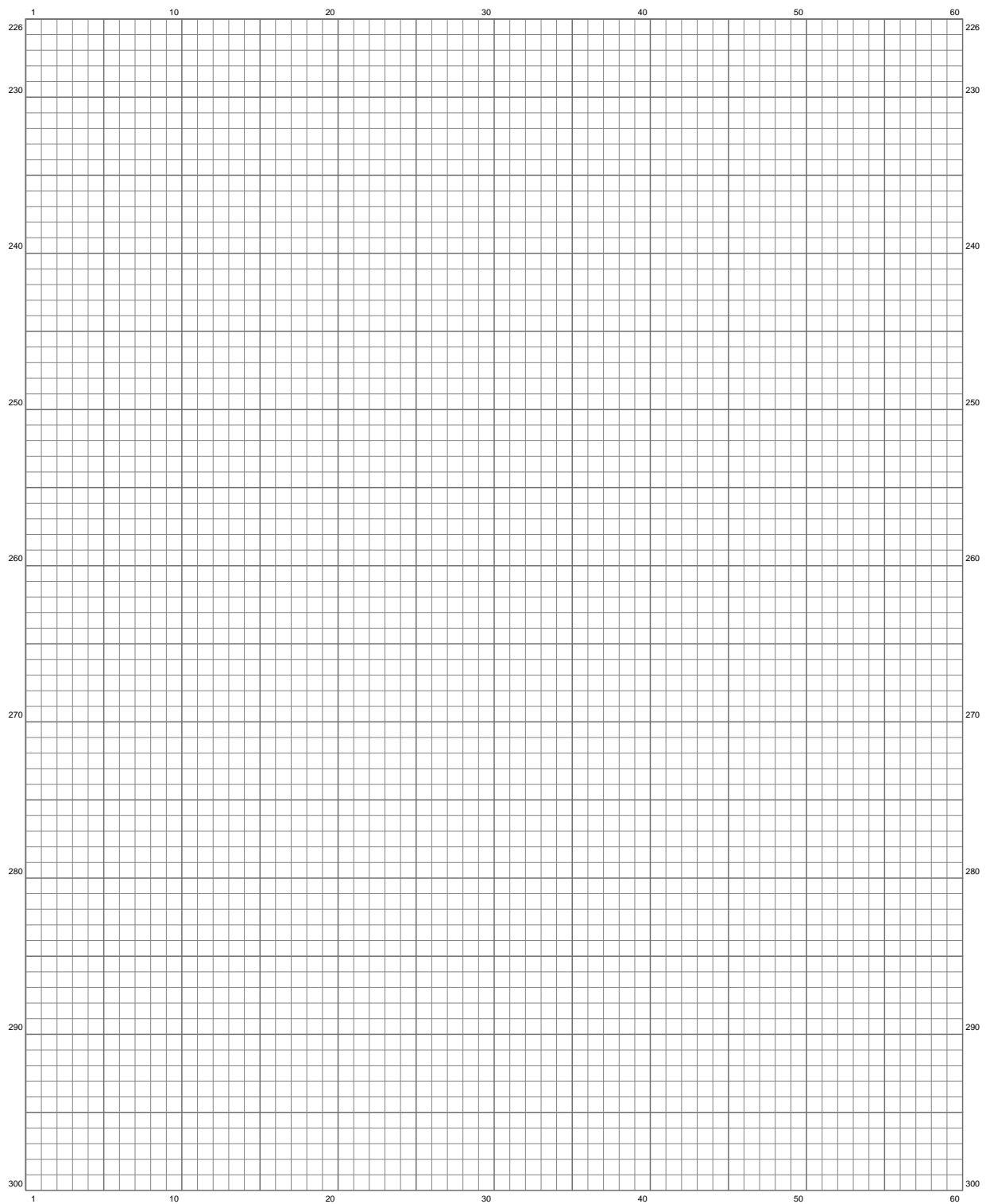
(This chart is printed using KG-Chart LE for Cross Stitch.)

Ariel Horror



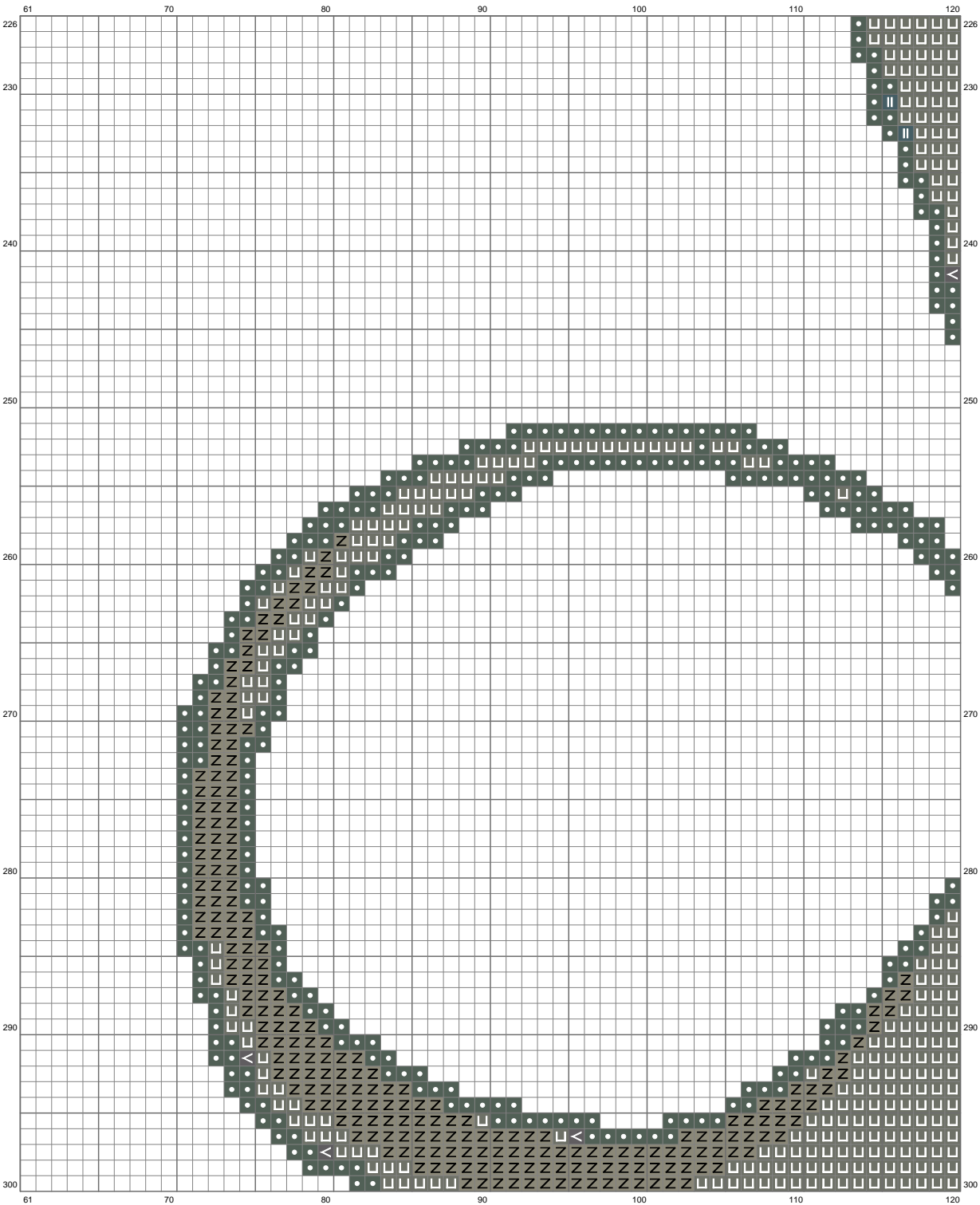
(This chart is printed using KG-Chart LE for Cross Stitch.)

Ariel Horror



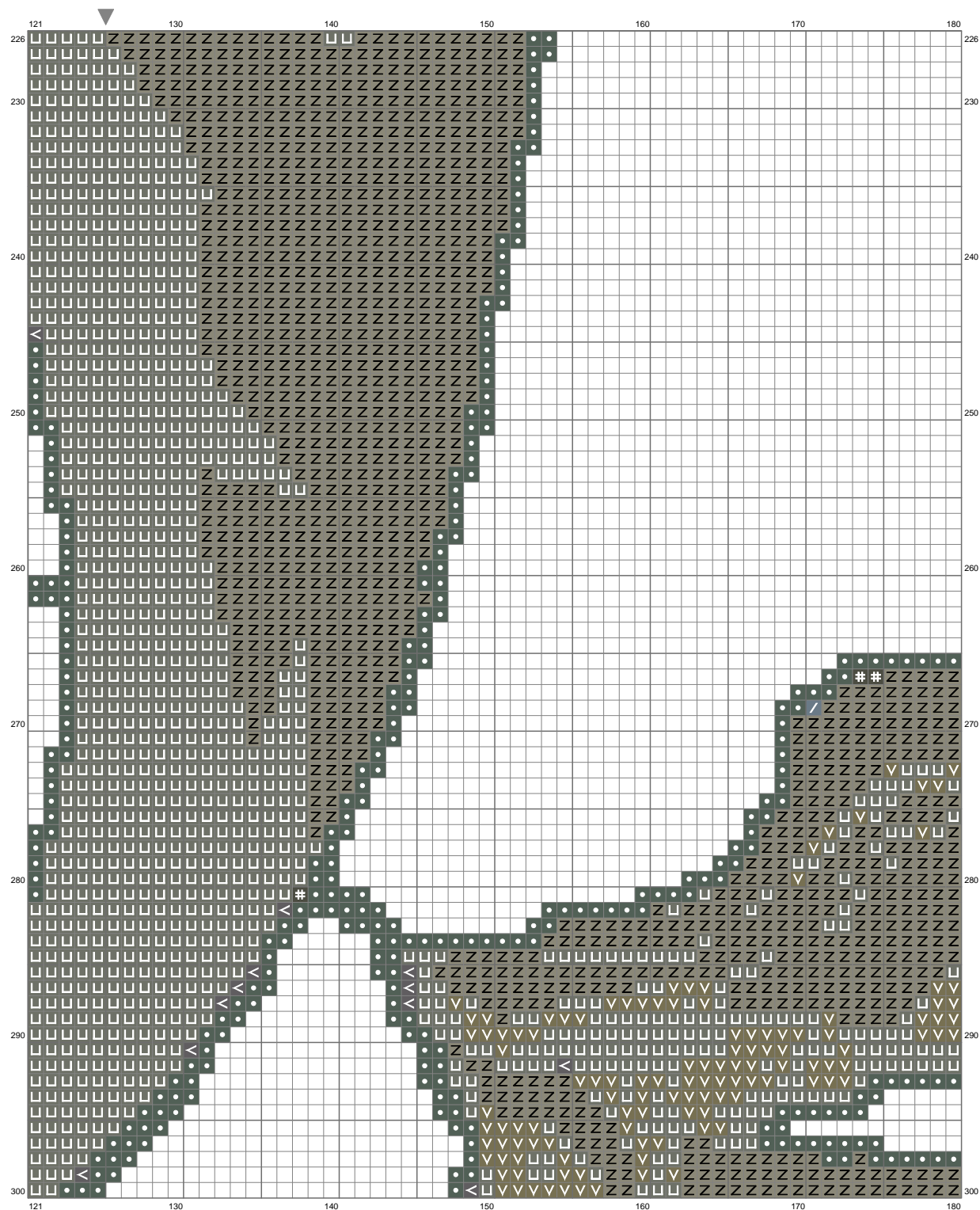
(This chart is printed using KG-Chart LE for Cross Stitch.)

Ariel Horror



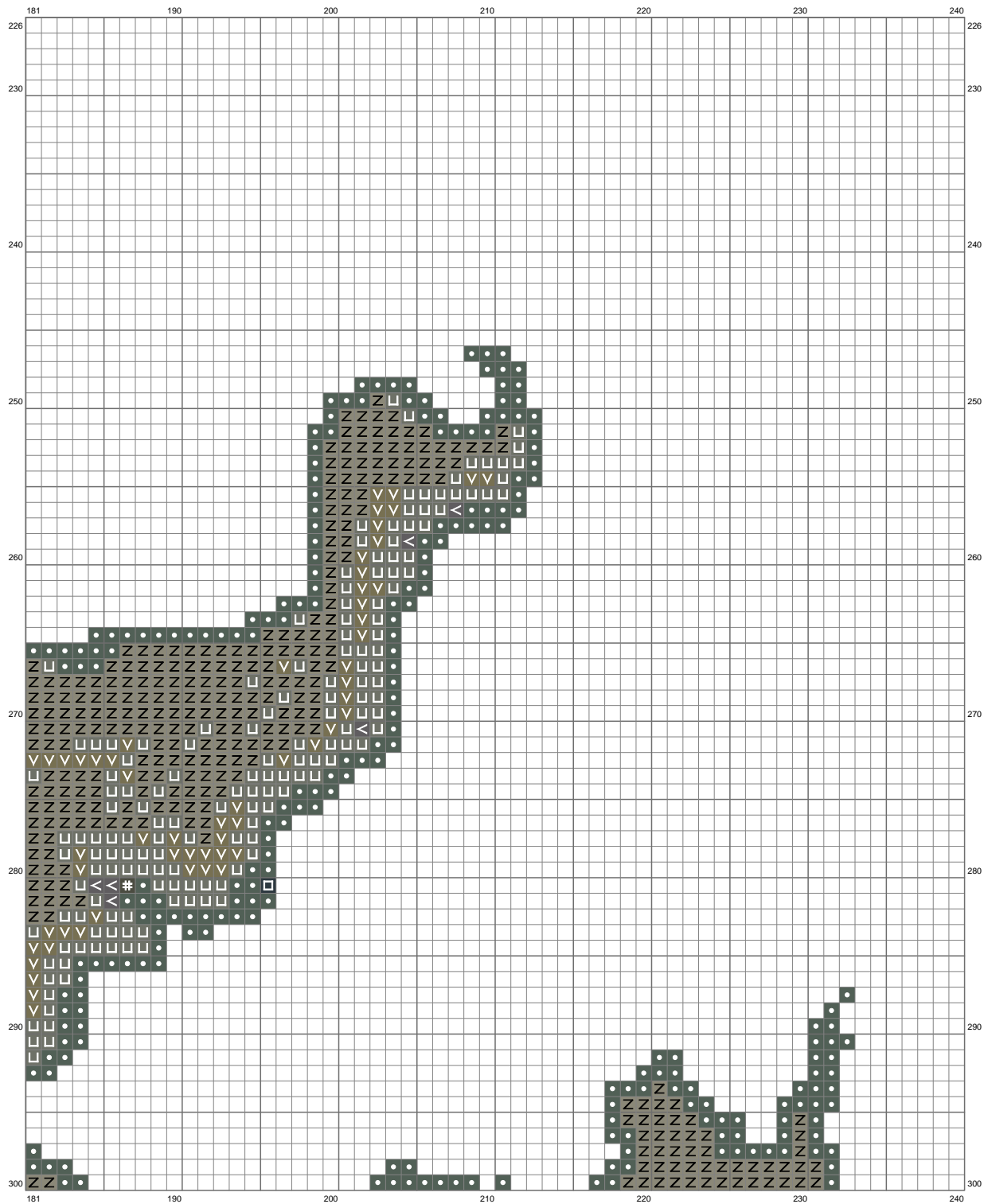
(This chart is printed using KG-Chart LE for Cross Stitch.)

Ariel Horror

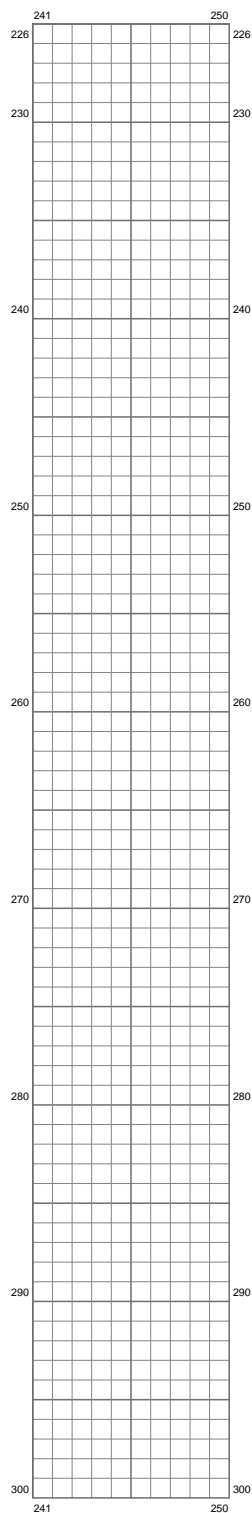


(This chart is printed using KG-Chart LE for Cross Stitch.)

Ariel Horror

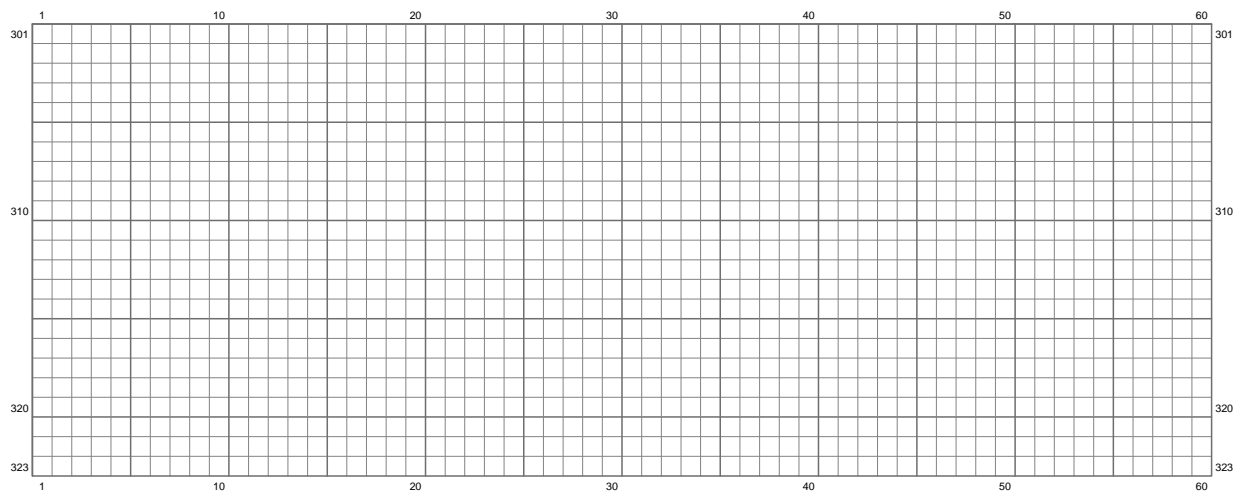


Ariel Horror

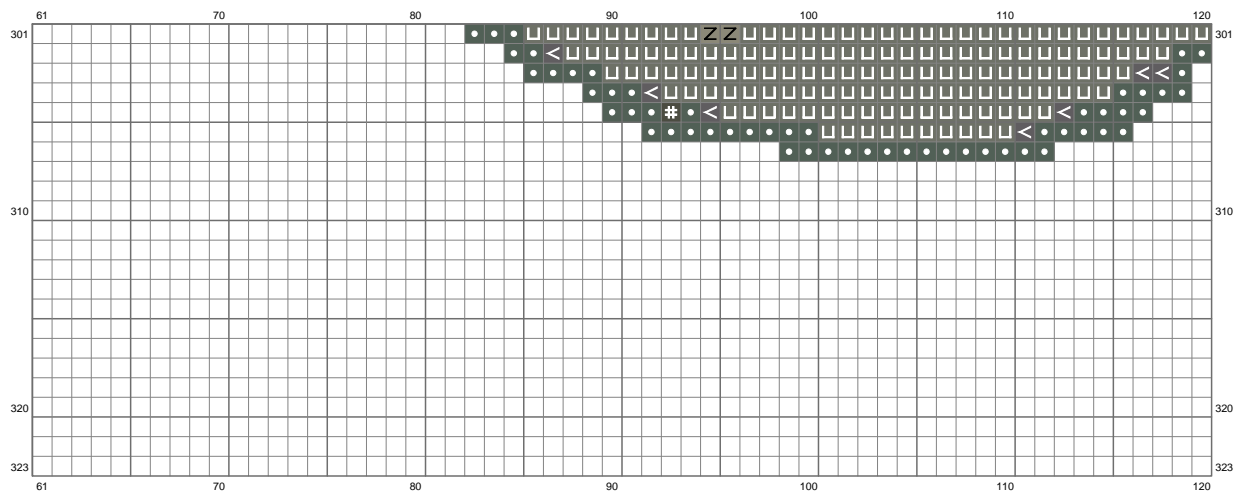


(This chart is printed using KG-Chart LE for Cross Stitch.)

Ariel Horror

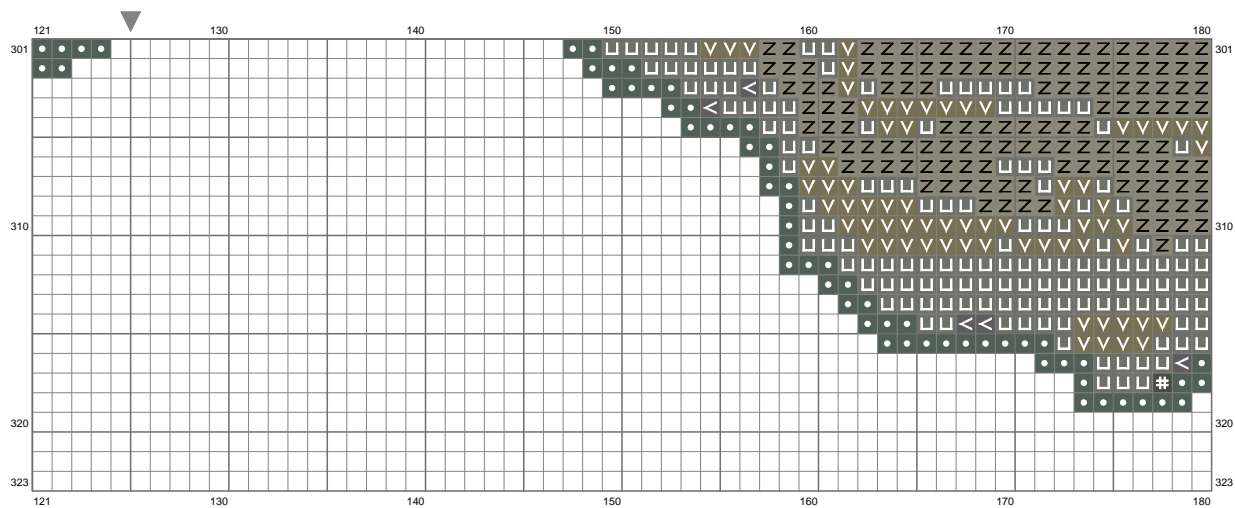


Ariel Horror

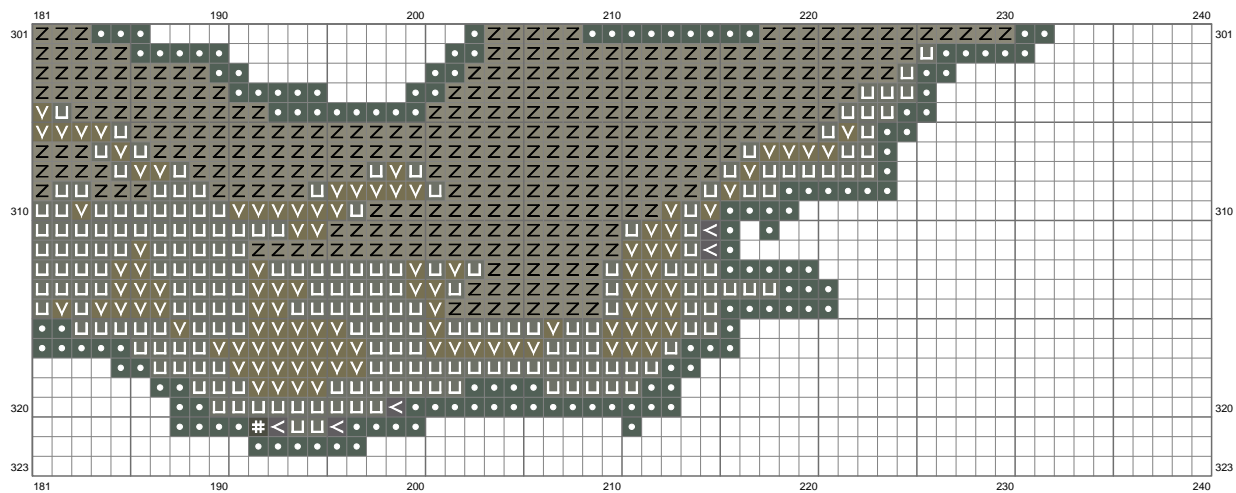


(This chart is printed using KG-Chart LE for Cross Stitch.)

Ariel Horror

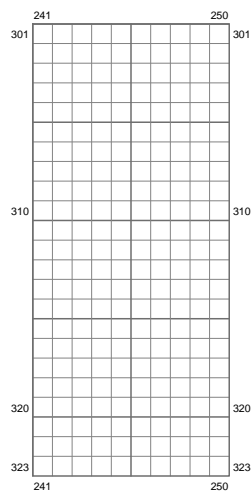


Ariel Horror



(This chart is printed using KG-Chart LE for Cross Stitch.)

Ariel Horror















(This chart is printed using KG-Chart LE for Cross Stitch.)

Stitch Count: 250w x 323h
Finished Size: 45.35 cm x 58.60 cm (28 ct./inch)
Cloth: Aida
Cloth's Color: White
of colors: 17 Colors

Color Table (DMC)

Cross Stitch

	500	(143 ct)
	3809	(817 ct)
	3371	(2205 ct)
	935	(213 ct)
	520	(1608 ct)
	3051	(745 ct)
	734	(1165 ct)
	924	(1820 ct)
	535	(297 ct)
	645	(3553 ct)
	3768	(422 ct)
	640	(4255 ct)
	523	(1304 ct)
	928	(1965 ct)
	3777	(6863 ct)
	445	(13 ct)
	3787	(12 ct)