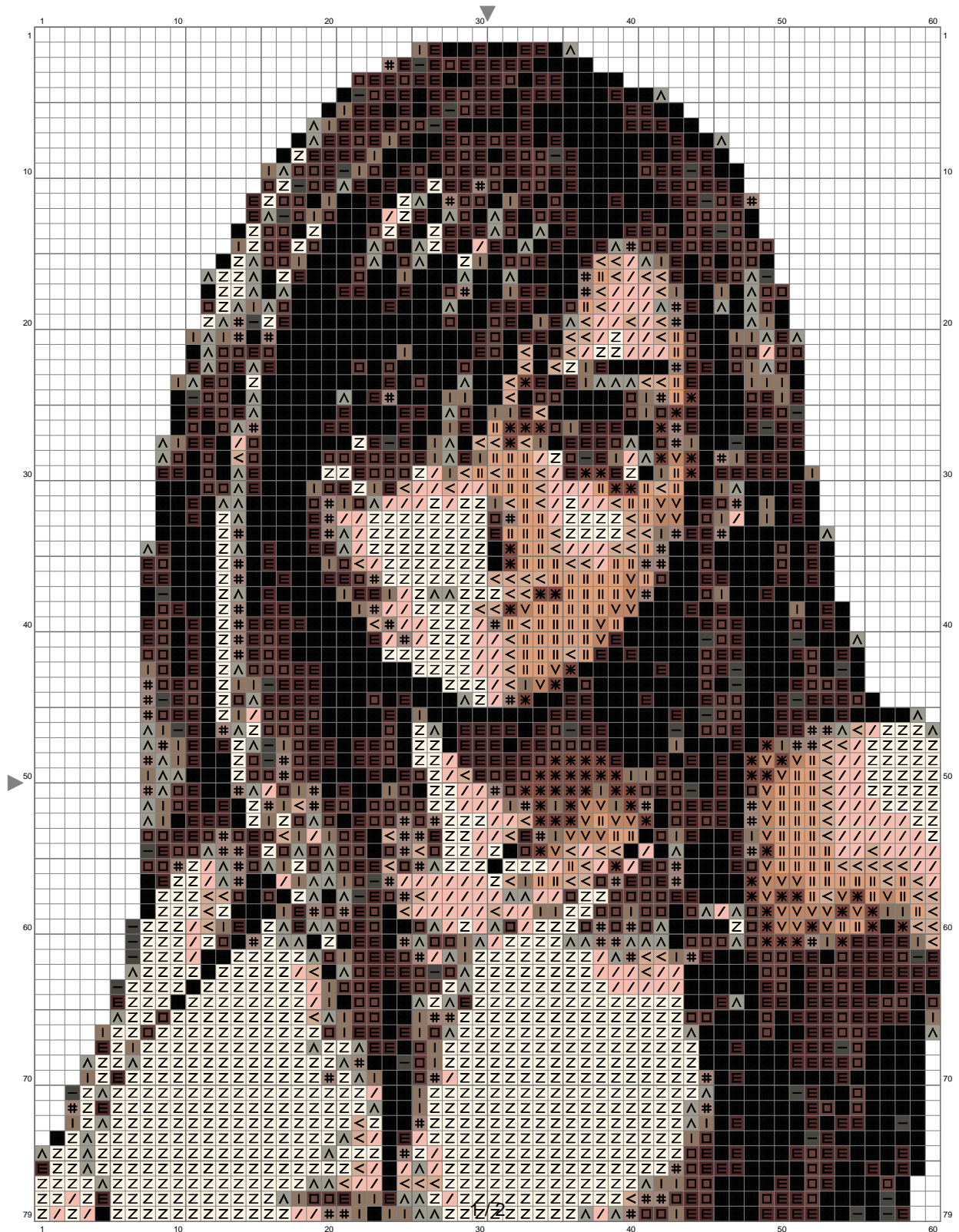
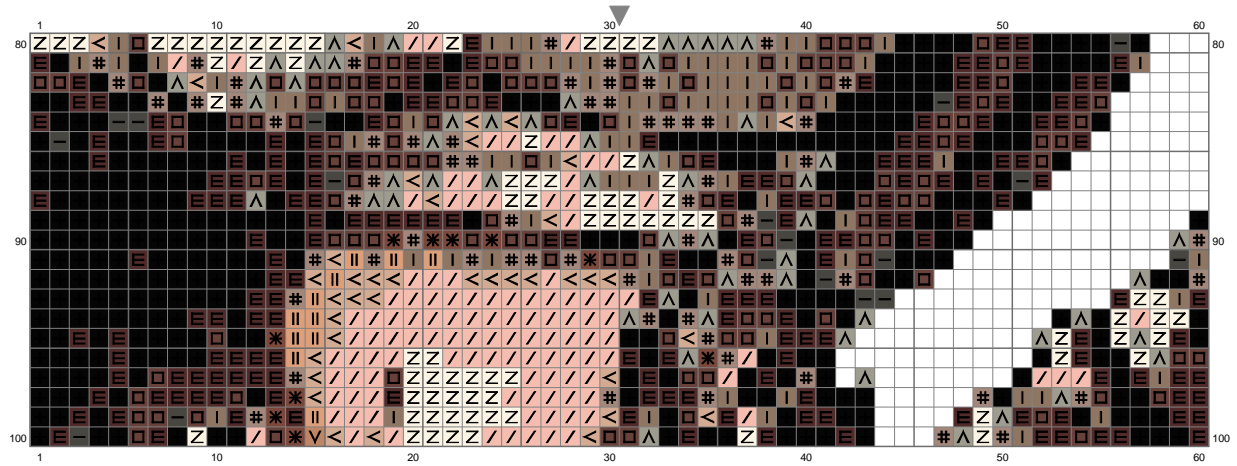


# tifa



(This chart is printed using KG-Chart LE for Cross Stitch.)

# tifa



(This chart is printed using KG-Chart LE for Cross Stitch.)

Stitch Count: 60w x 100h

Finished Size: 21.77 cm x 36.28 cm (14 ct./inch)

Cloth: CLOTH

Cloth's Color: White

# of colors: 13 Colors

## Color Table (DMC)

### Cross Stitch

310	(1269 ct)
3371	(694 ct)
838	(472 ct)
3021	(71 ct)
801	(81 ct)
3790	(224 ct)
611	(177 ct)
3862	(46 ct)
646	(230 ct)
436	(121 ct)
3864	(159 ct)
3779	(298 ct)
3866	(820 ct)