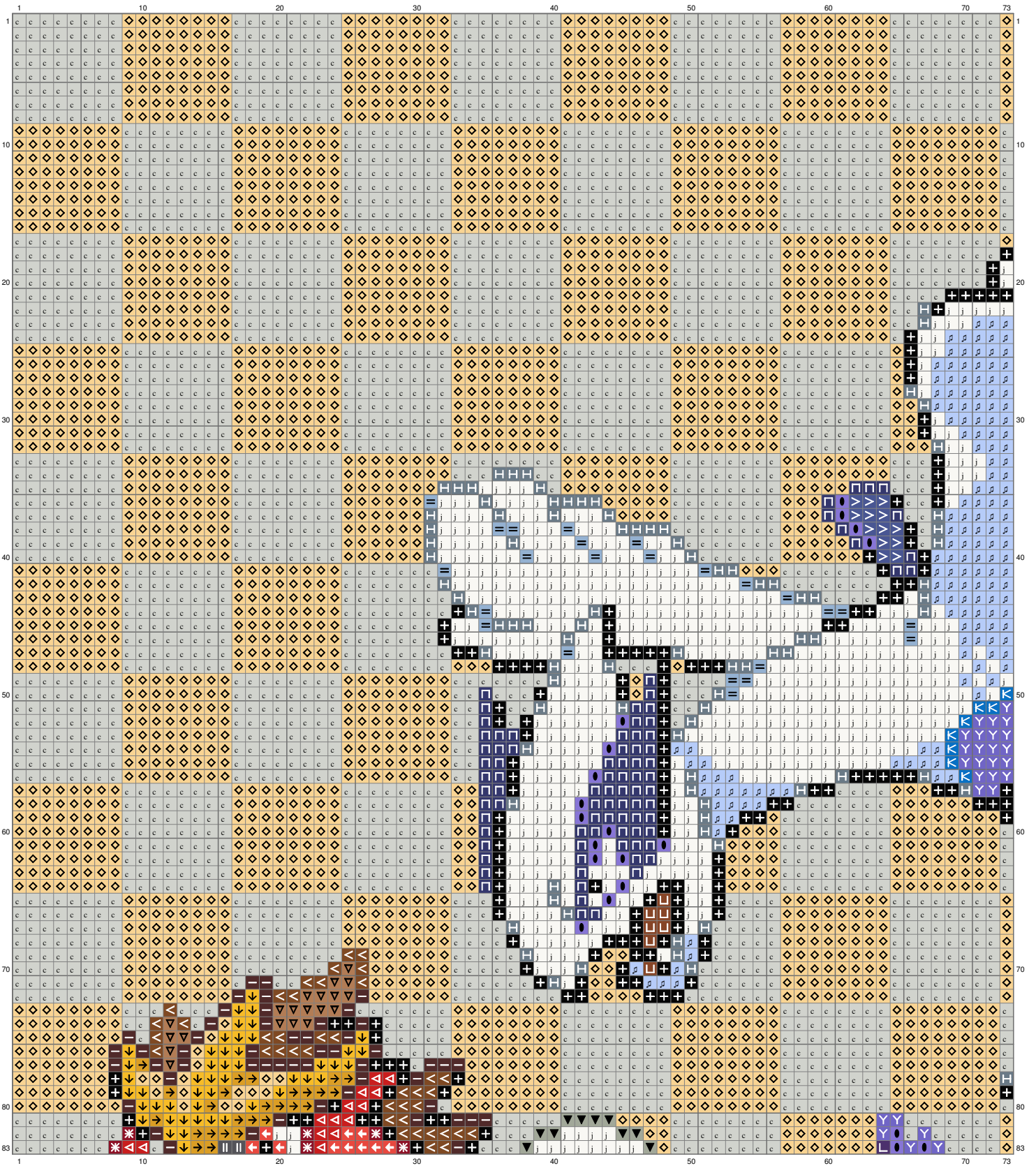
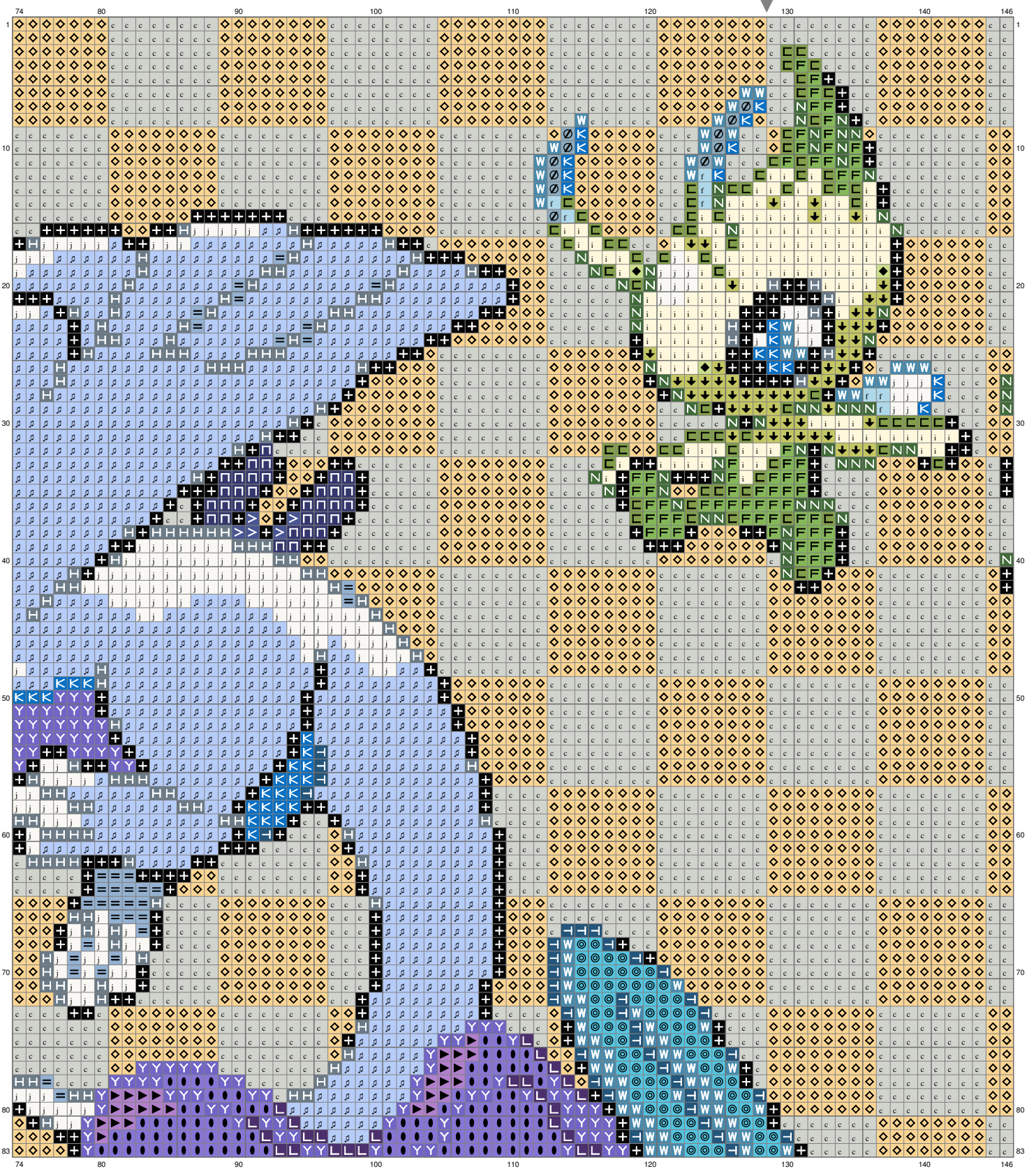


EpiPokePat GenII



(This chart is printed using KG-Chart LE for Cross Stitch.

EpiPokePat GenII



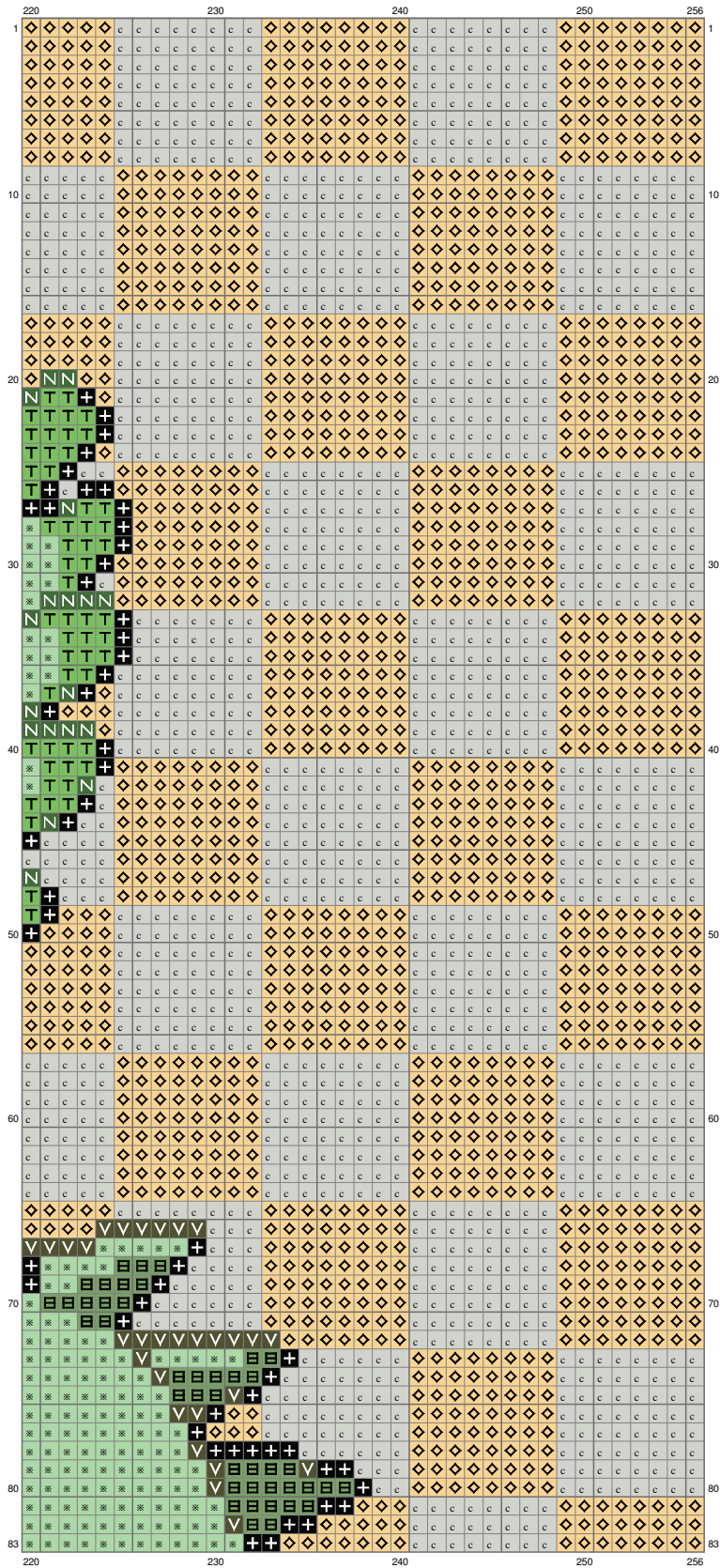
(This chart is printed using KG-Chart LE for Cross Stitch.)

EpiPokePat GenII



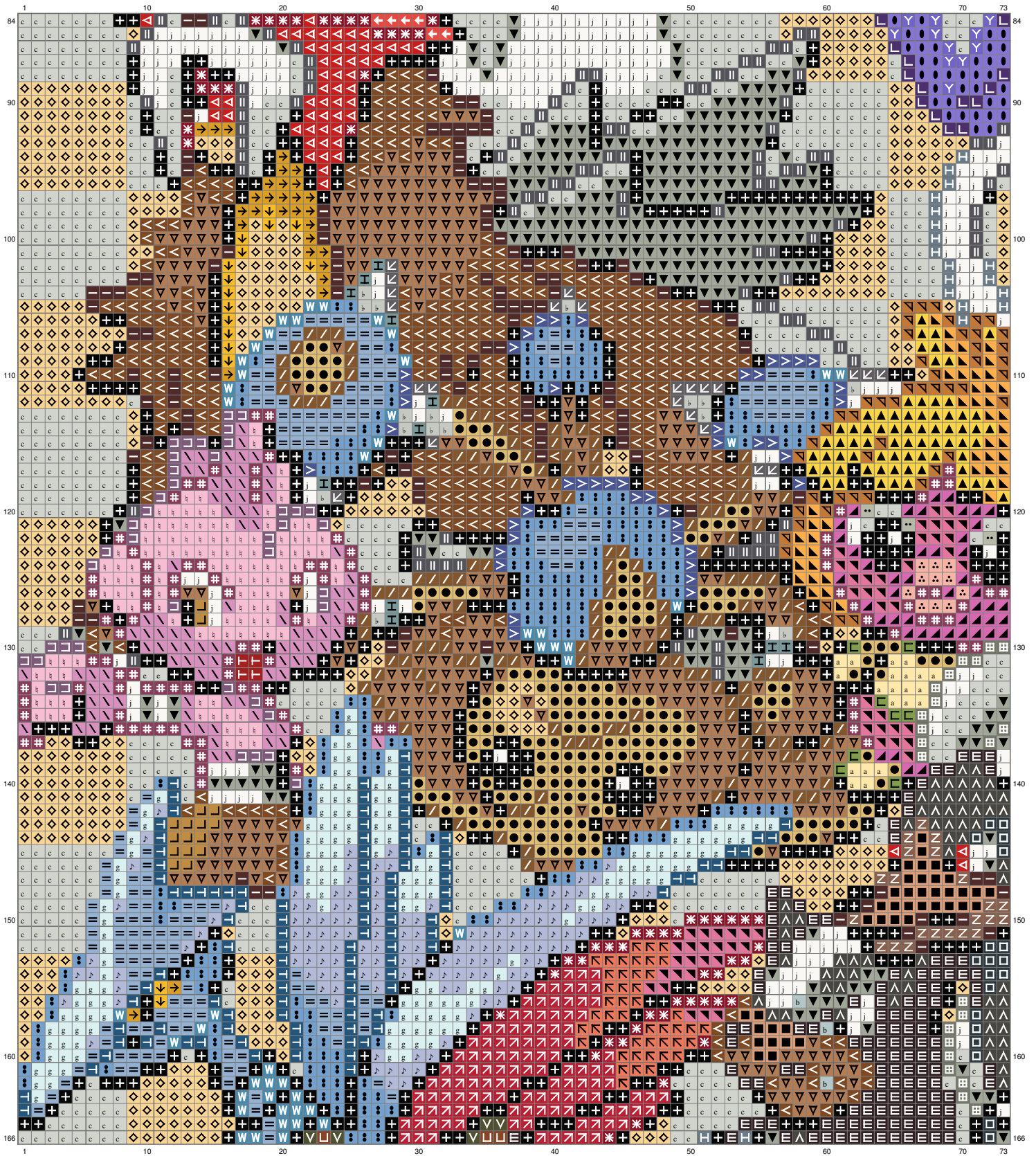
(This chart is printed using KG-Chart LE for Cross Stitch.)

EpiPokePat GenII



(This chart is printed using KG-Chart LE for Cross Stitch.)

EpiPokePat GenII

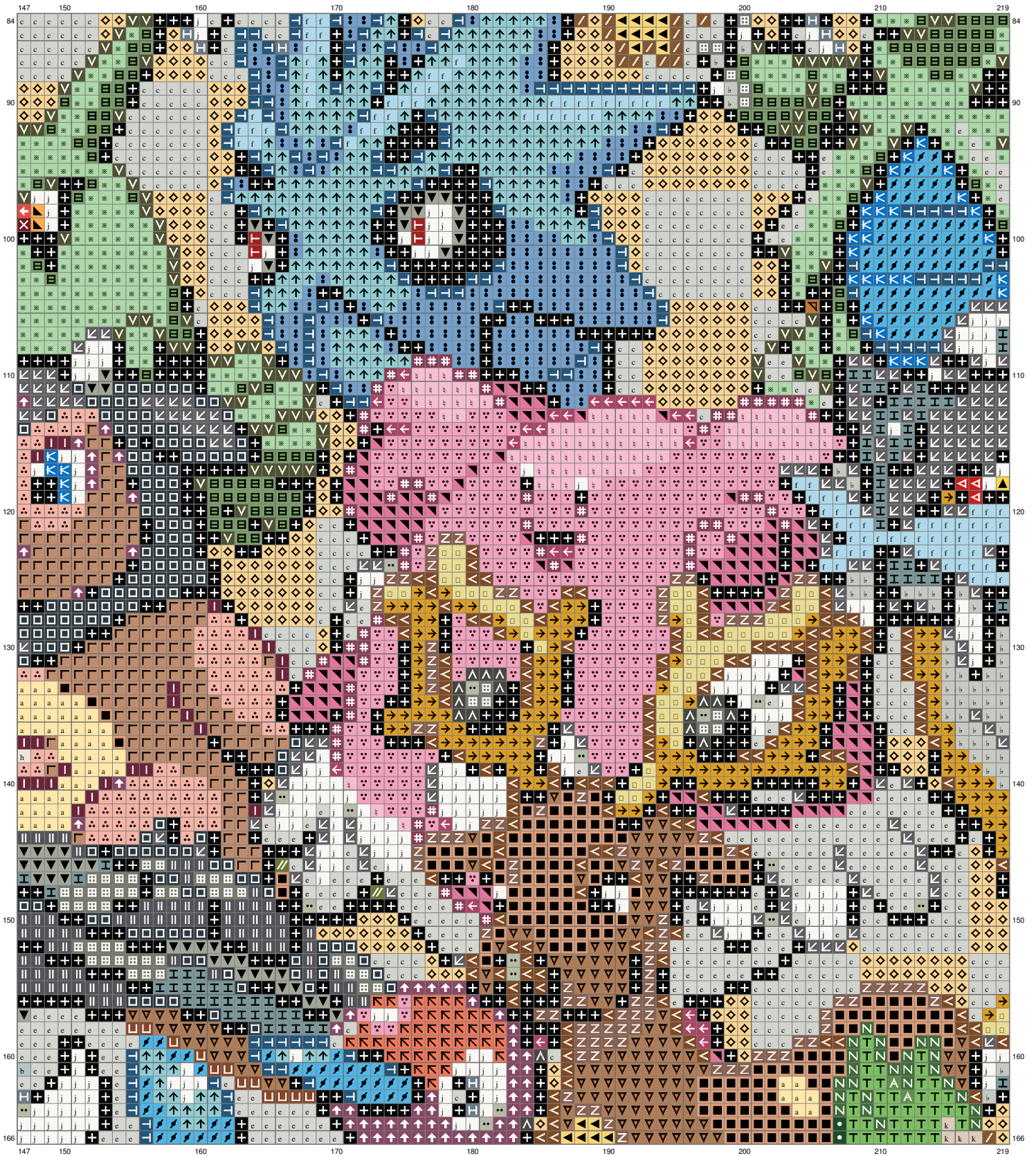


EpiPokePat GenII

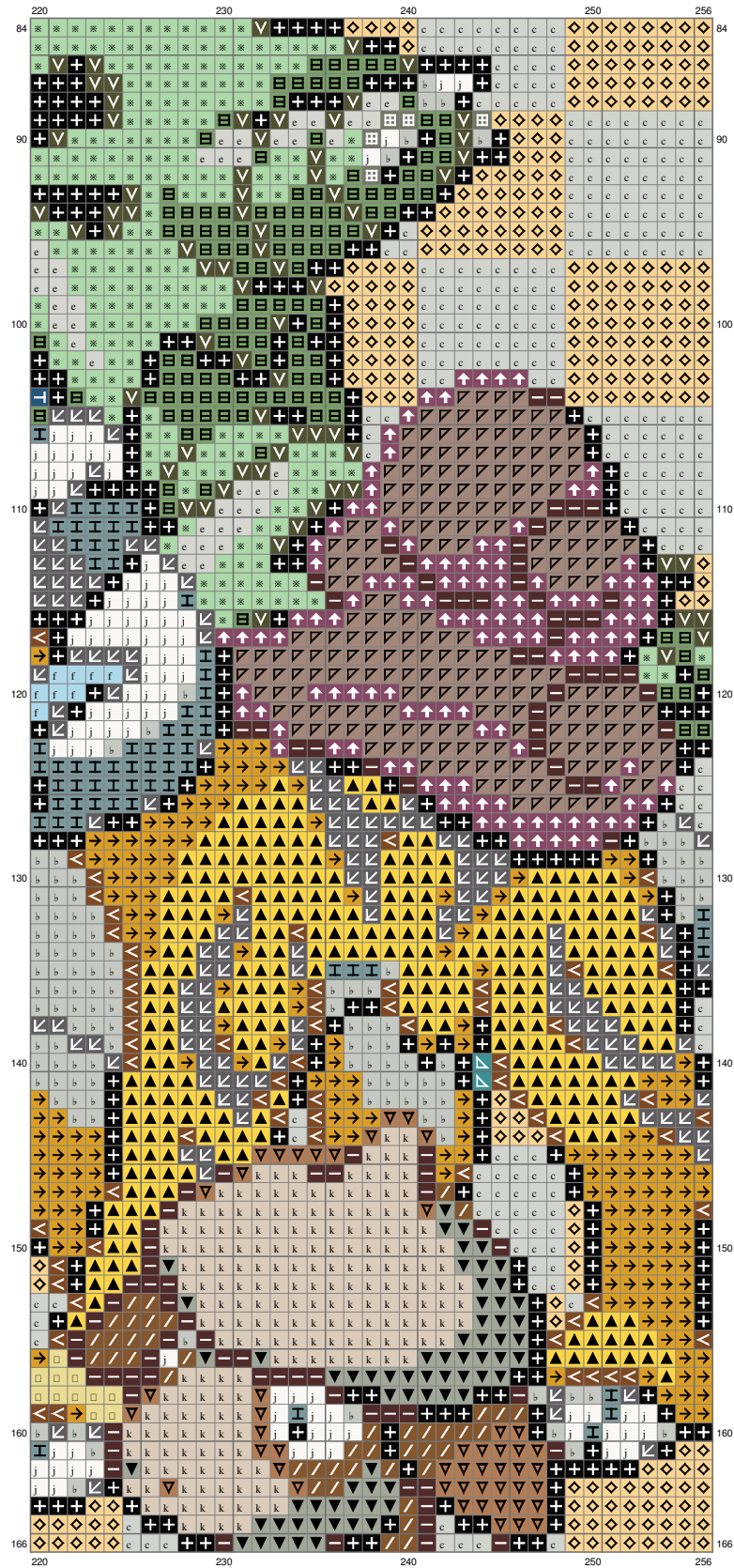


(This chart is printed using KG-Chart LE for Cross Stitch.)

EpiPokePat GenII

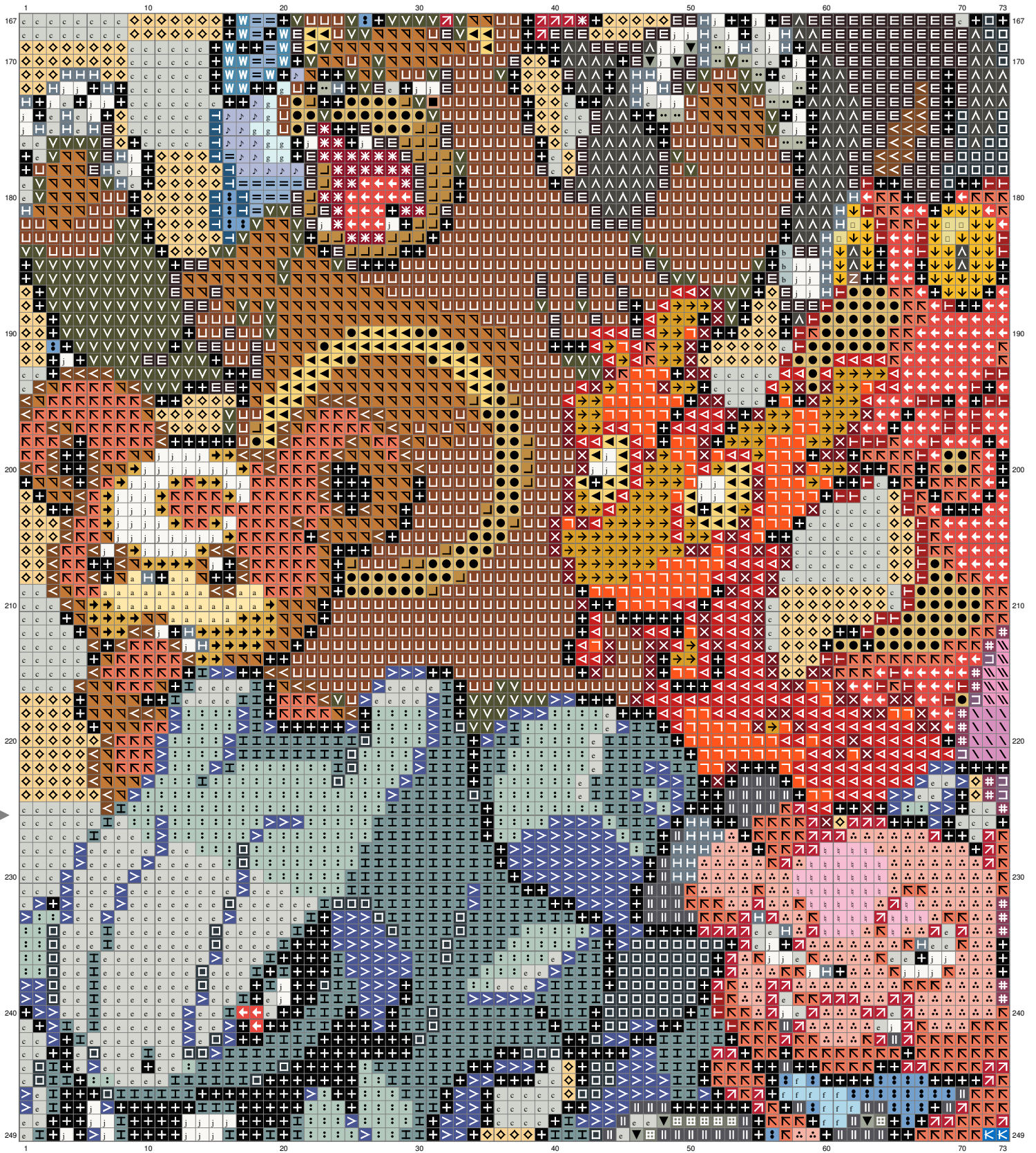


EpiPokePat GenII



(This chart is printed using KG-Chart LE for Cross Stitch.)

EpiPokePat GenII

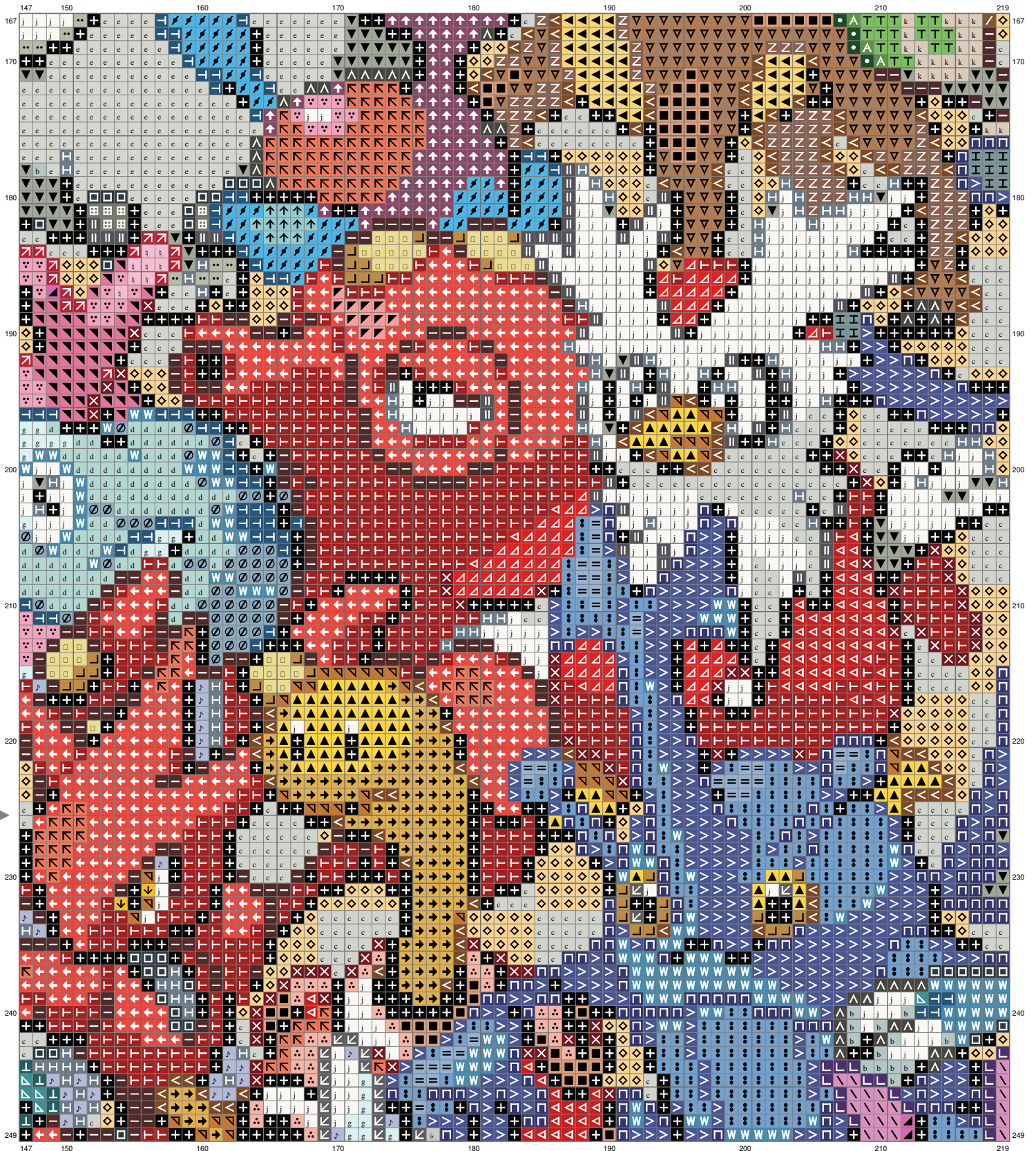


(This chart is printed using KG-Chart LE for Cross Stitch.)

EpiPokePat GenII

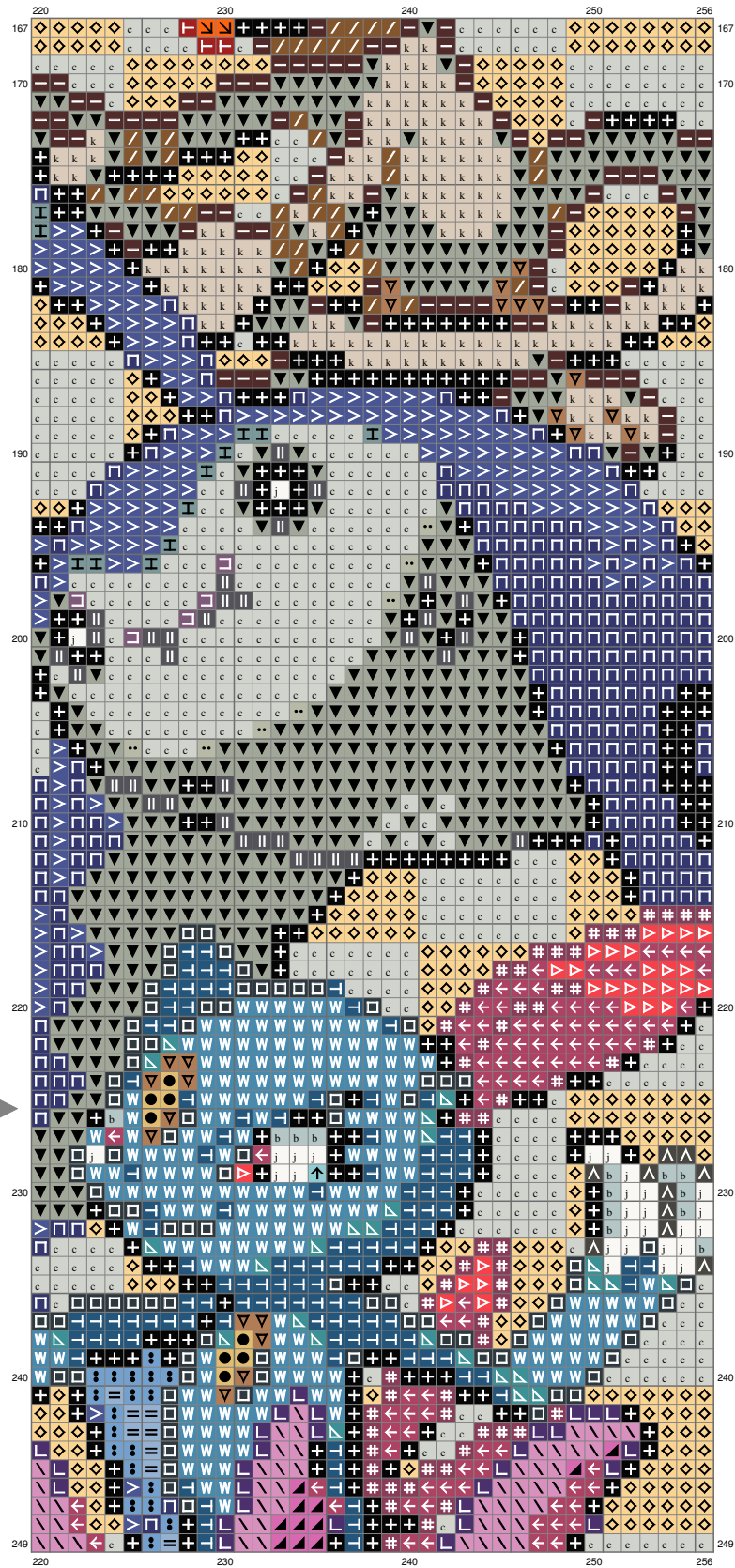


EpiPokePat GenII

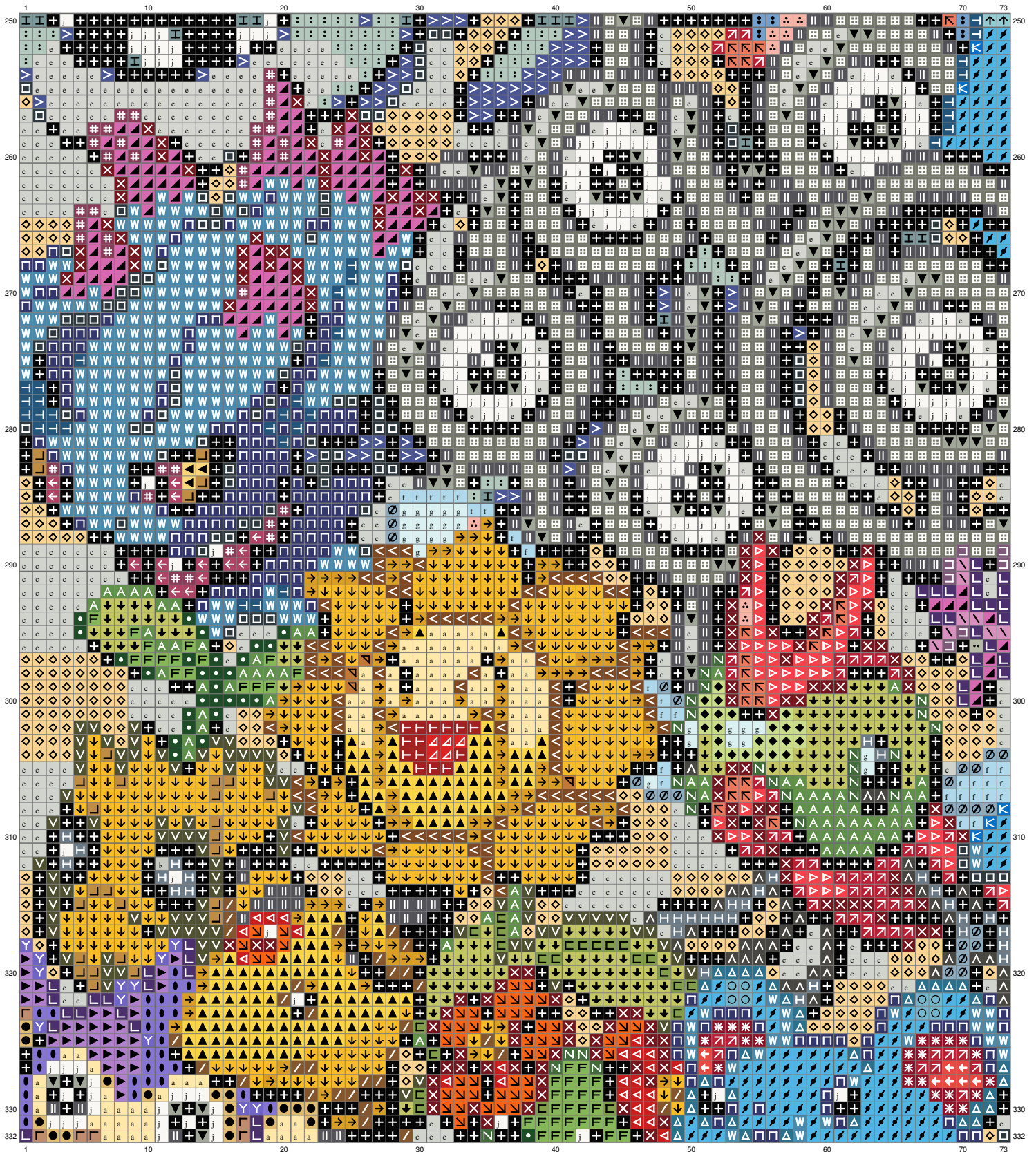


(This chart is printed using KG-Chart LE for Cross Stitch.)

EpiPokePat GenII

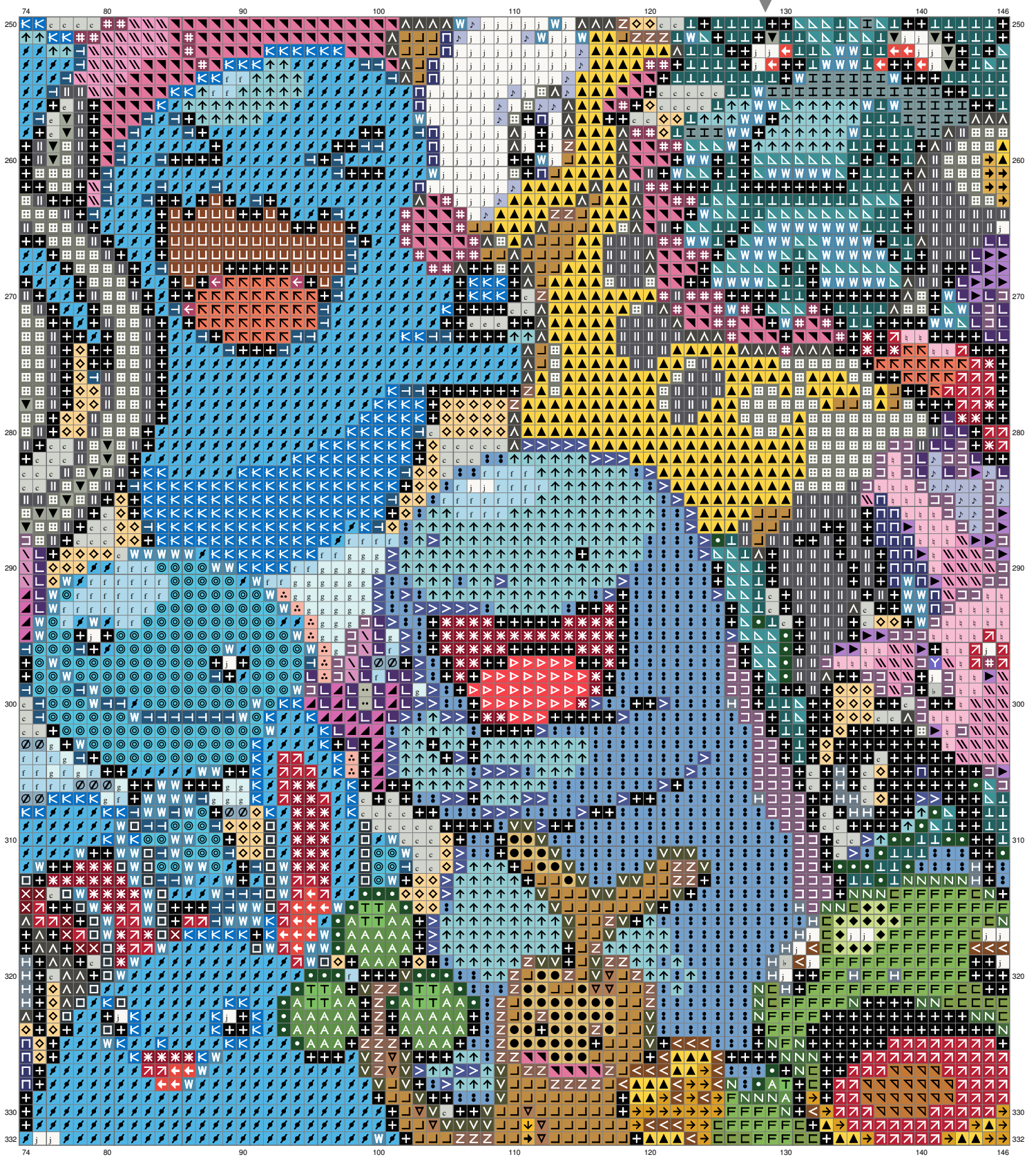


EpiPokePat GenII

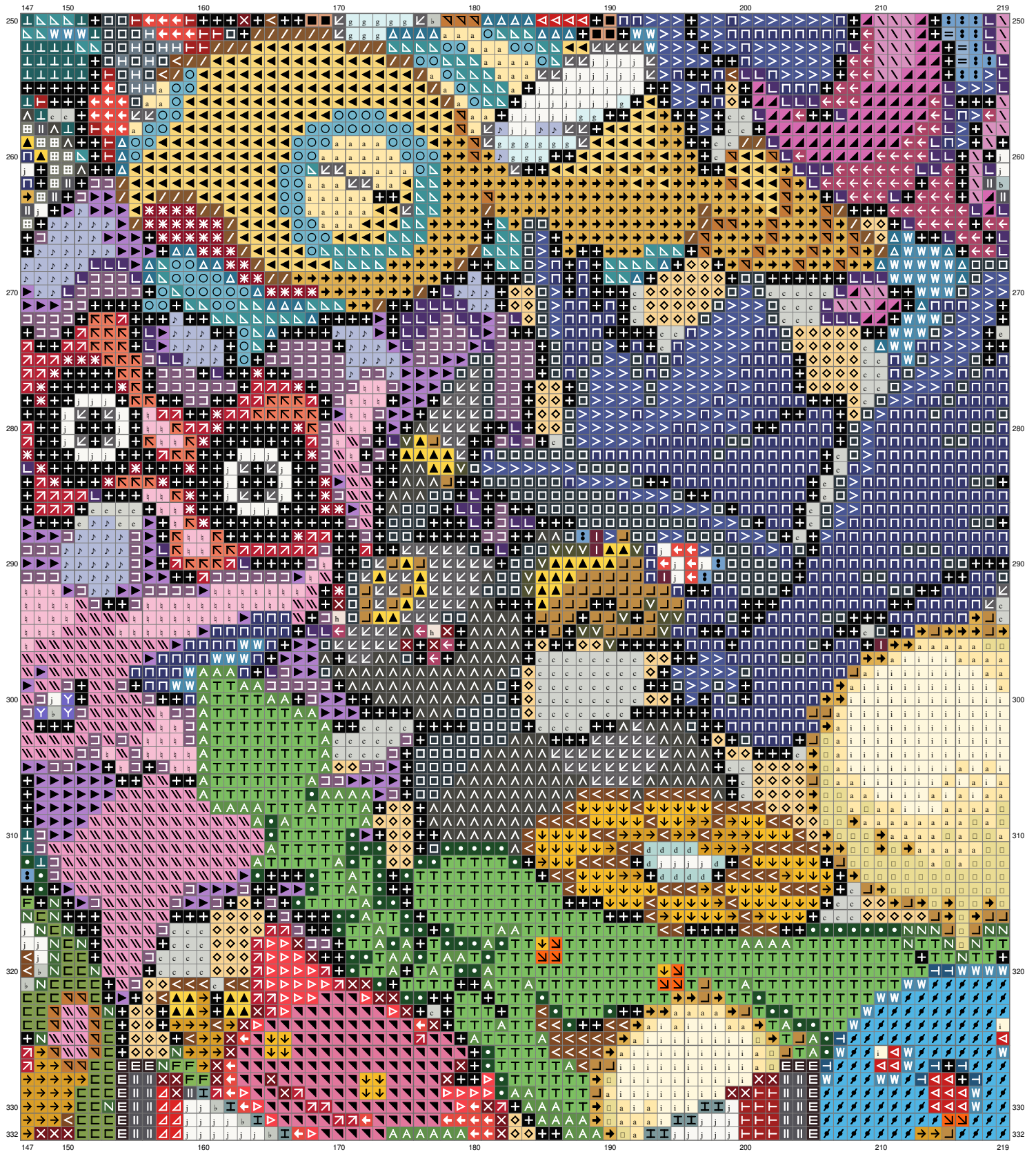


(This chart is printed using KG-Chart LE for Cross Stitch.)

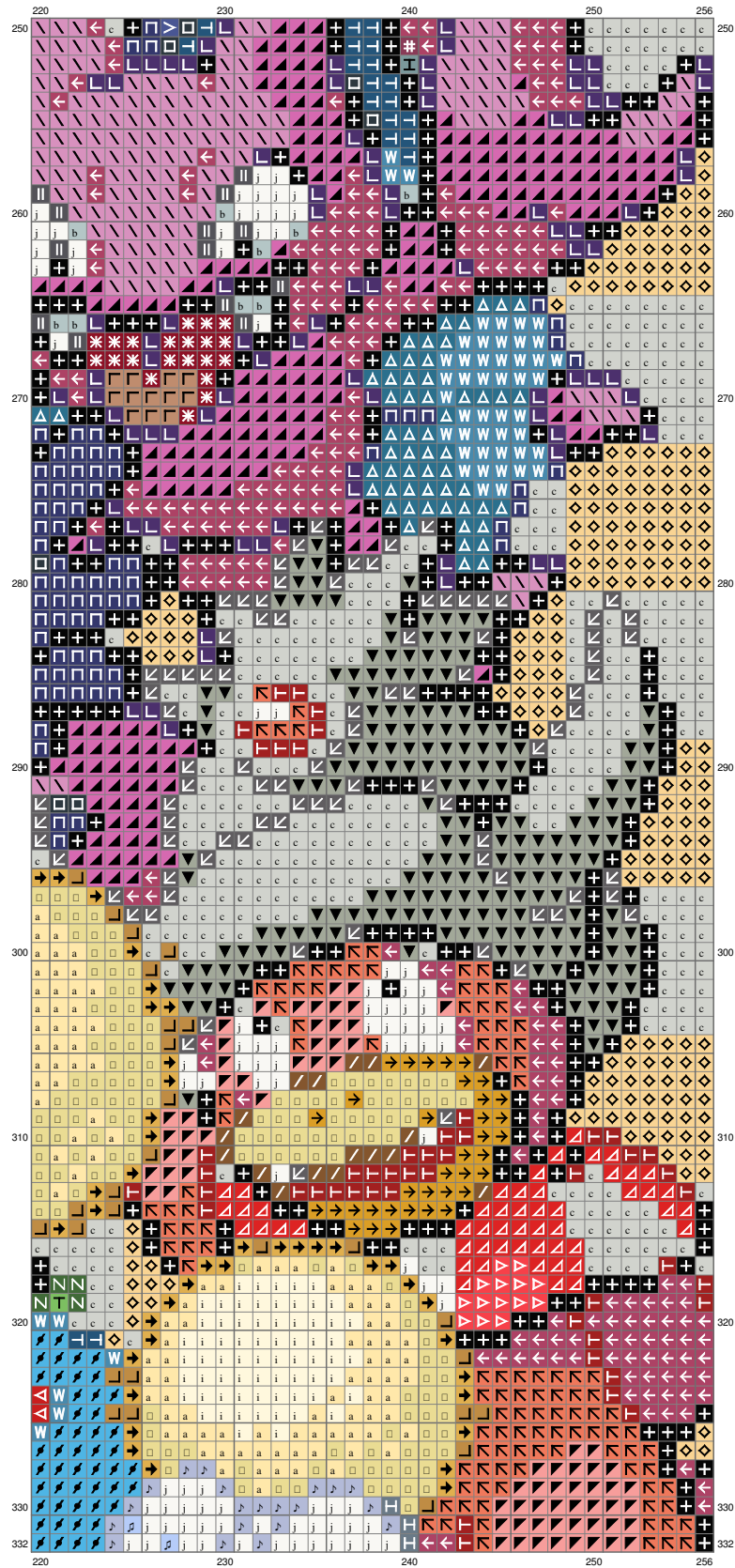
EpiPokePat GenII



EpiPokePat GenII

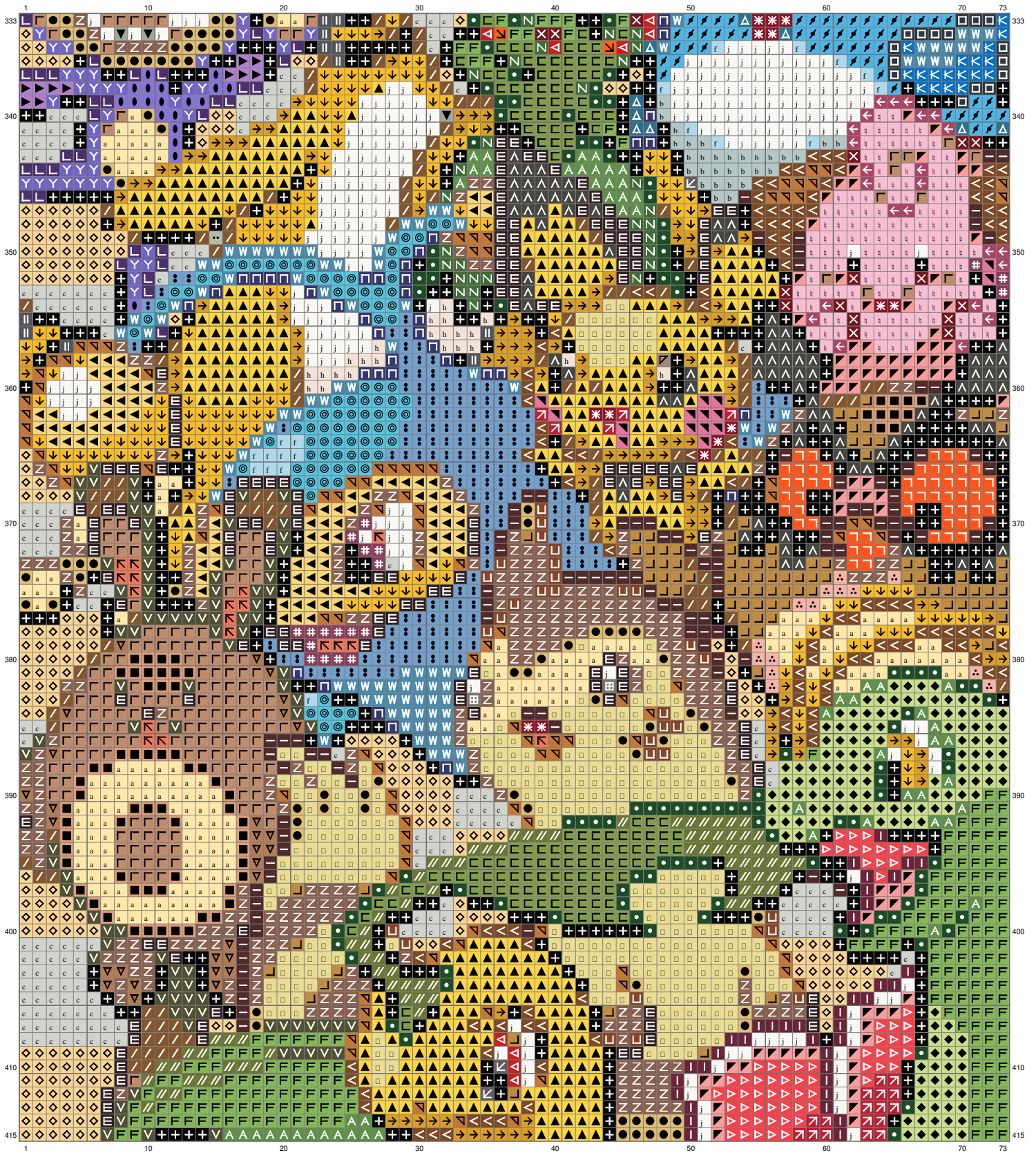


EpiPokePat GenII



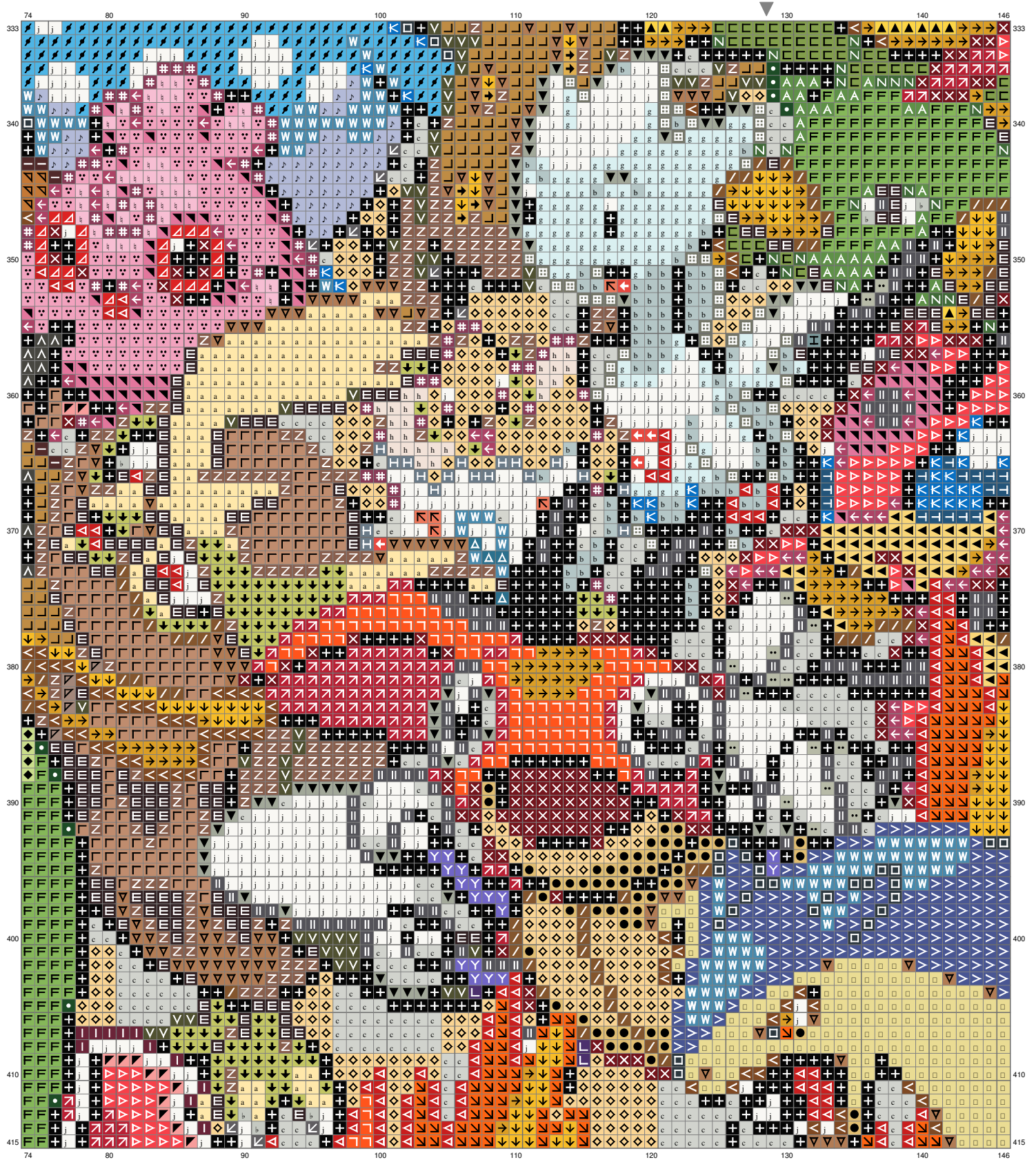
(This chart is printed using KG-Chart LE for Cross Stitch.)

EpiPokePat GenII



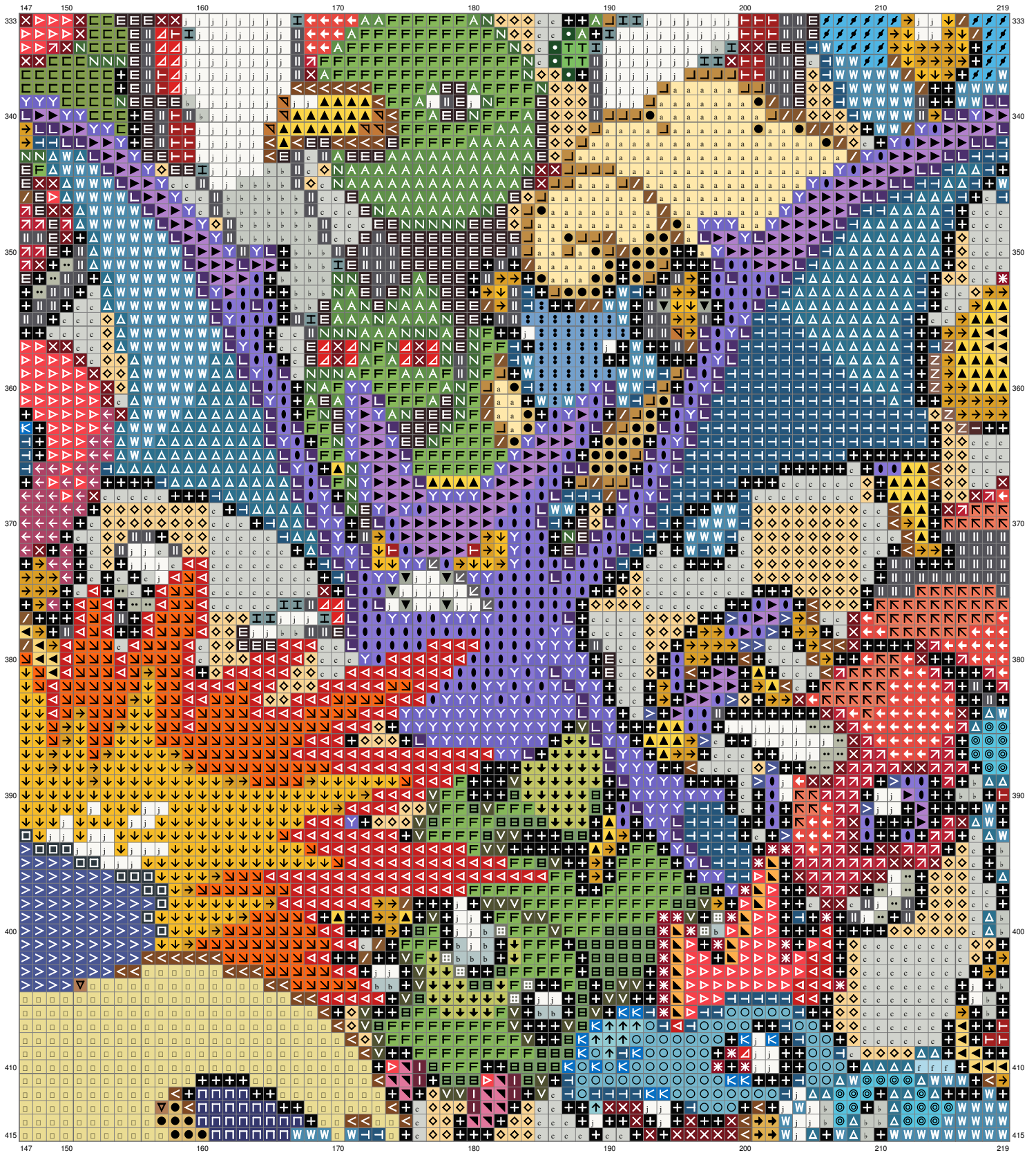
(This chart is printed using KG-Chart LE for Cross Stitch.)

EpiPokePat GenII

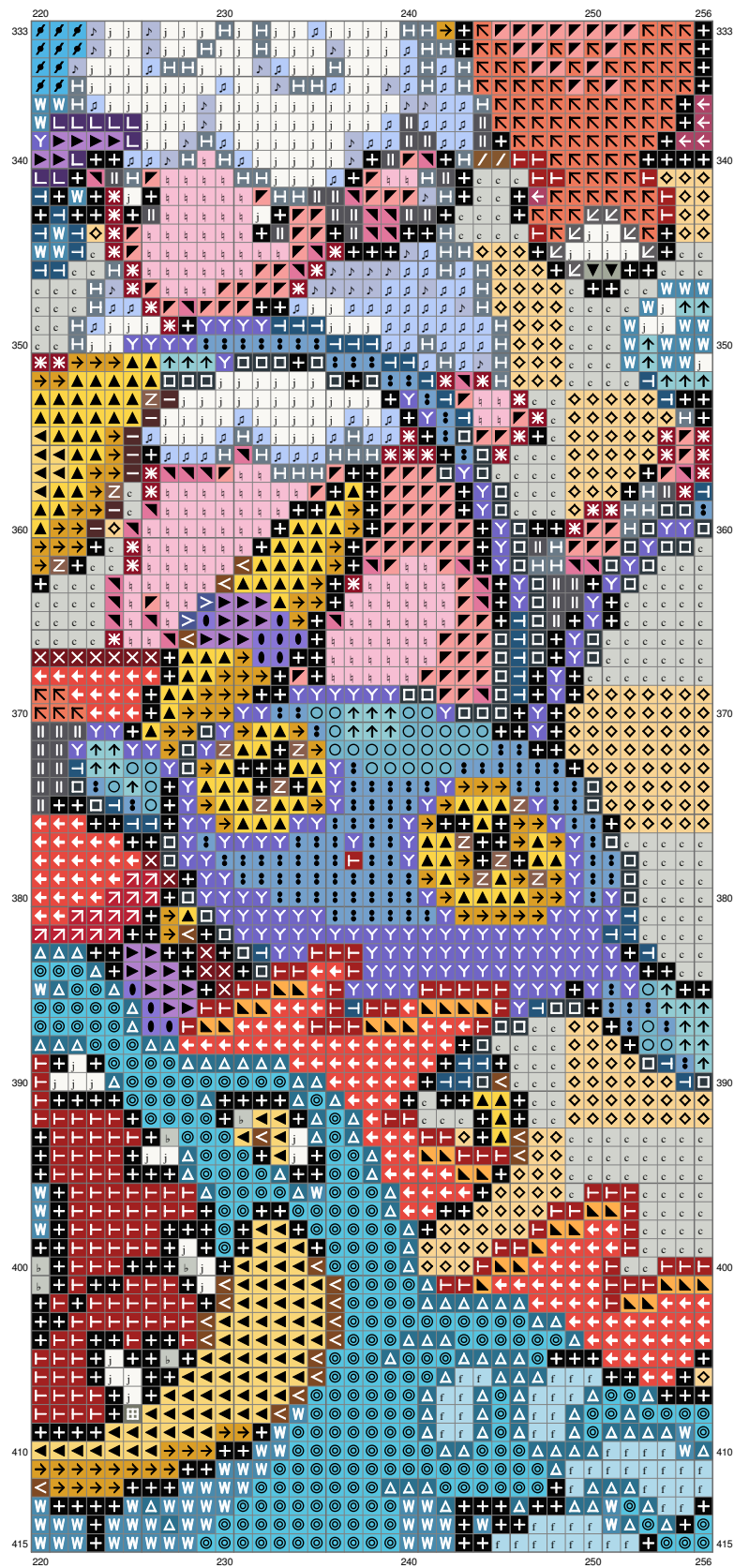


(This chart is printed using KG-Chart LE for Cross Stitch.)

EpiPokePat GenII

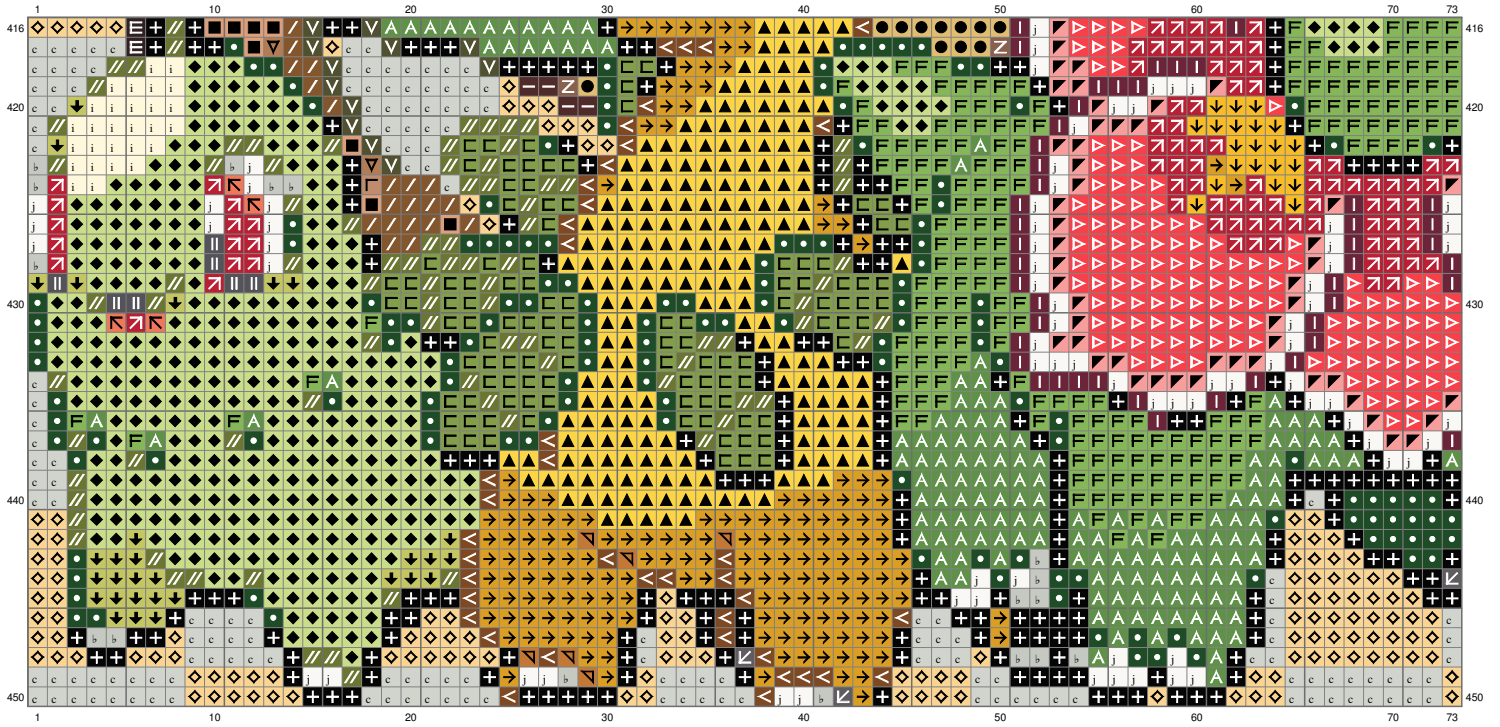


EpiPokePat GenII



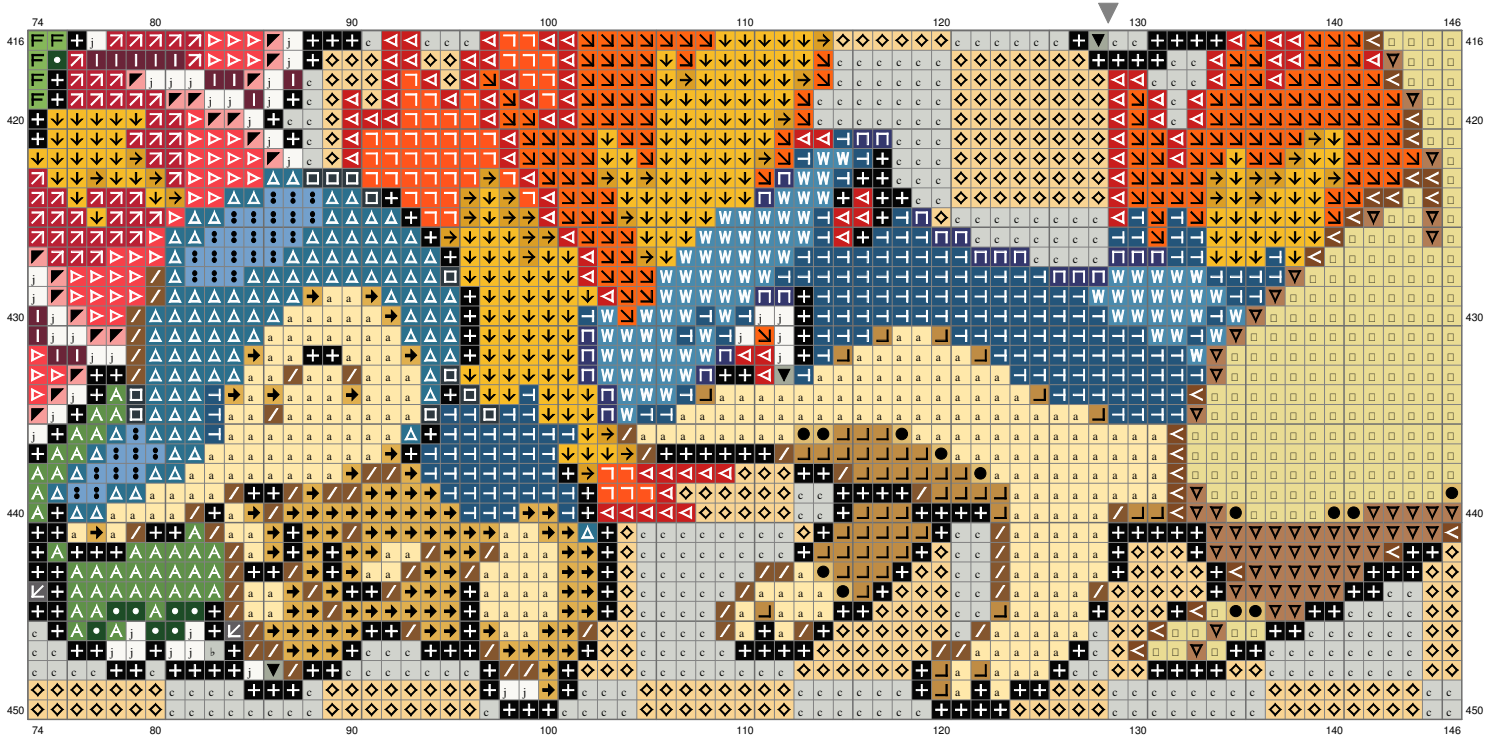
(This chart is printed using KG-Chart LE for Cross Stitch.)

EpiPokePat GenII

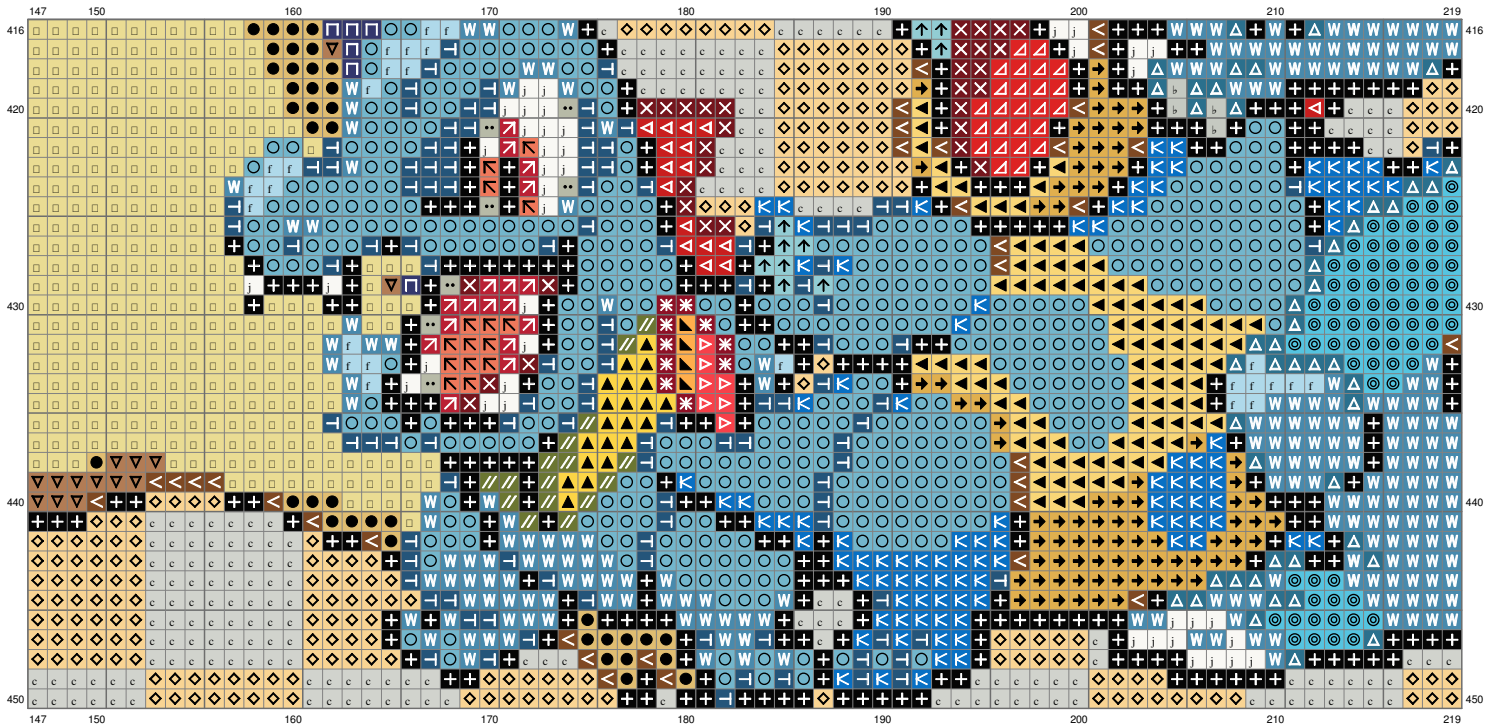


(This chart is printed using KG-Chart LE for Cross Stitch.)

EpiPokePat GenII

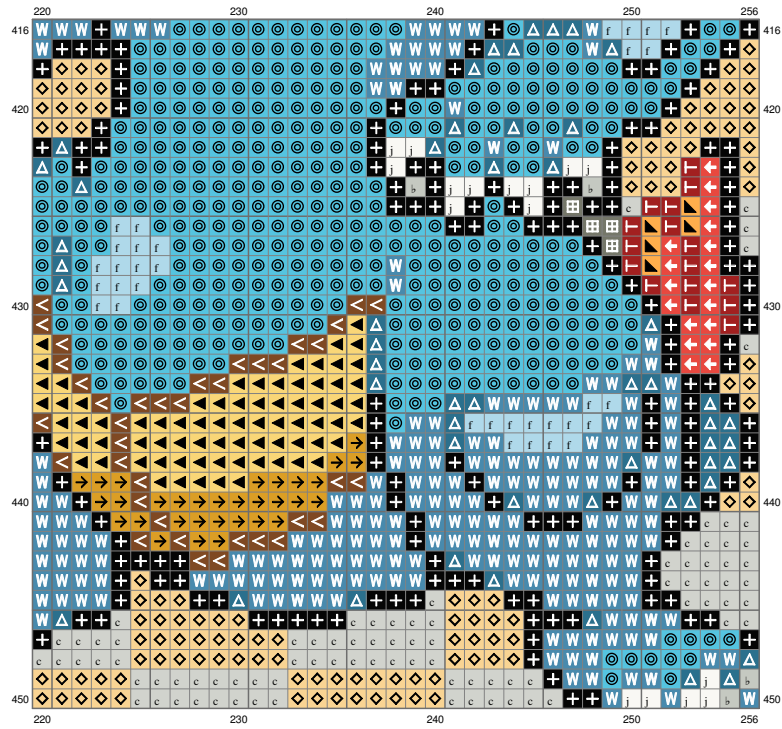


EpiPokePat GenII



(This chart is printed using KG-Chart LE for Cross Stitch.)

EpiPokePat GenII



(This chart is printed using KG-Chart LE for Cross Stitch.)

EpiPokePat GenII

Stitch Count:256w x 450h

Cloth:Aida Cloth's Color:White

Finished Size:72.24 cm x 127 cm (18 ct./inch)

Total 101 Colors

Color Table (DMC)

Cross Stitch					
	155	(400 ct)		740	(490 ct)
	157	(1319 ct)		743	(903 ct)
	161	(703 ct)		744	(1333 ct)
	165	(1620 ct)		758	(399 ct)
	166	(435 ct)		782	(632 ct)
	300	(823 ct)		791	(616 ct)
	310	(10636 ct)		815	(669 ct)
	311	(1409 ct)		816	(585 ct)
	312	(1555 ct)		817	(829 ct)
	315	(288 ct)		827	(392 ct)
	316	(460 ct)		829	(1699 ct)
	319	(427 ct)		869	(798 ct)
	321	(911 ct)		900	(1322 ct)
	334	(1593 ct)		902	(183 ct)
	349	(1074 ct)		905	(386 ct)
	420	(1630 ct)		906	(748 ct)
	436	(361 ct)		922	(1491 ct)
	444	(1950 ct)		926	(706 ct)
	469	(188 ct)		927	(186 ct)
	470	(490 ct)		931	(107 ct)
	500	(1244 ct)		936	(828 ct)
	518	(763 ct)		939	(866 ct)
	523	(185 ct)		946	(330 ct)
	535	(854 ct)		966	(1081 ct)
	543	(63 ct)		972	(1460 ct)
	604	(539 ct)		986	(513 ct)
	610	(957 ct)		988	(613 ct)
	611	(312 ct)		3021	(1015 ct)
	613	(381 ct)		3022	(1536 ct)
	648	(12234 ct)		3023	(312 ct)
	680	(642 ct)		3024	(1147 ct)
	704	(1093 ct)		3041	(413 ct)
	728	(125 ct)		3340	(378 ct)
				3348	(543 ct)
				3371	(729 ct)
				3607	(500 ct)
				3687	(885 ct)
				3688	(736 ct)
				3689	(740 ct)
				3747	(506 ct)
				3755	(510 ct)
				3760	(2439 ct)
				3765	(685 ct)
				3766	(869 ct)
				3768	(782 ct)
				3777	(1344 ct)
				3787	(935 ct)
				3799	(1562 ct)
				3801	(583 ct)
				3802	(544 ct)
				3803	(566 ct)
				3808	(322 ct)
				3810	(412 ct)
				3811	(132 ct)
				3813	(335 ct)
				3820	(636 ct)
				3821	(665 ct)
				3823	(421 ct)
				3838	(779 ct)
				3841	(519 ct)
				3842	(1322 ct)
				3843	(471 ct)
				3845	(1431 ct)
				3846	(1468 ct)
				3852	(1603 ct)
				3855	(11470 ct)
				3863	(995 ct)
				3865	(4131 ct)