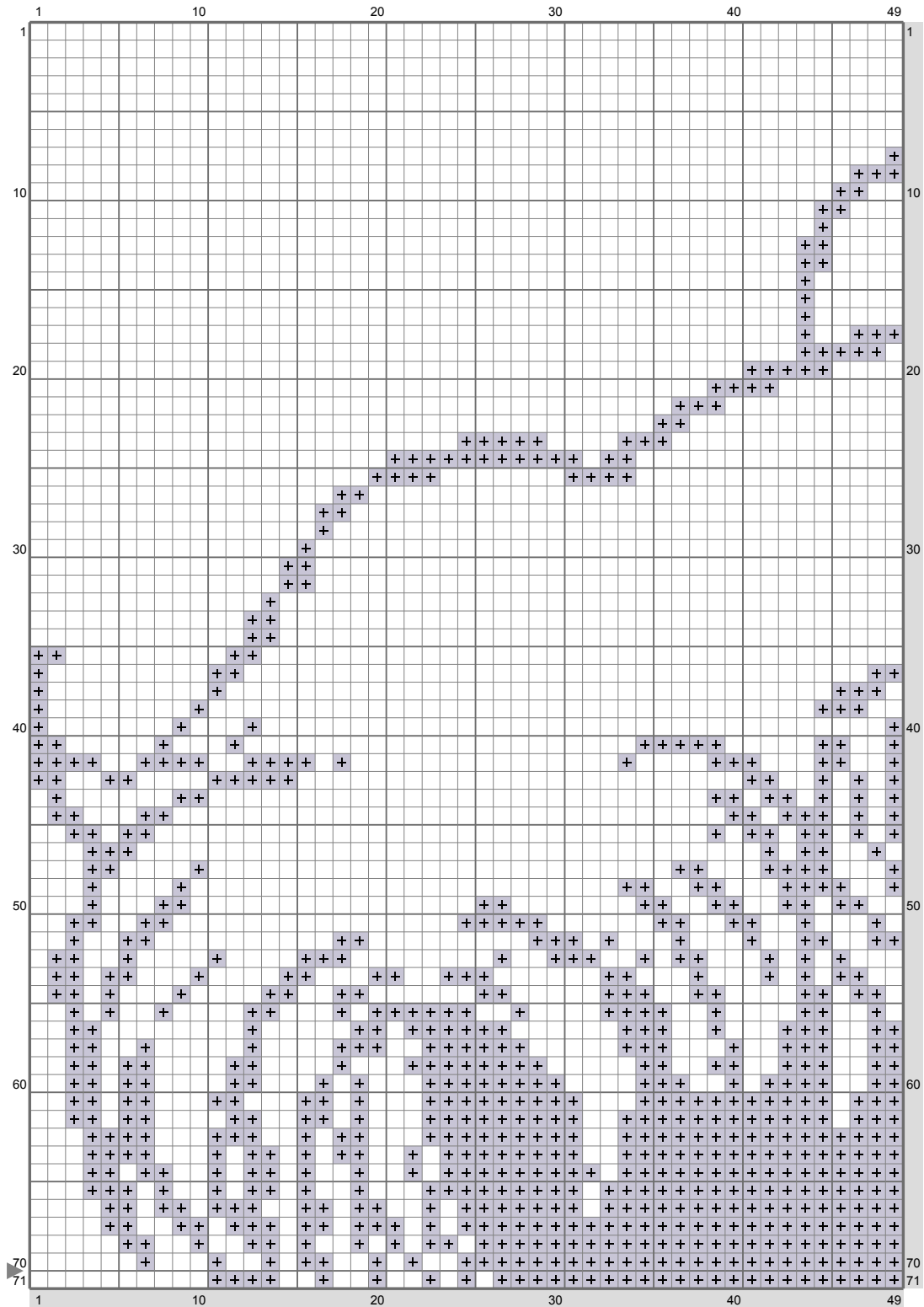
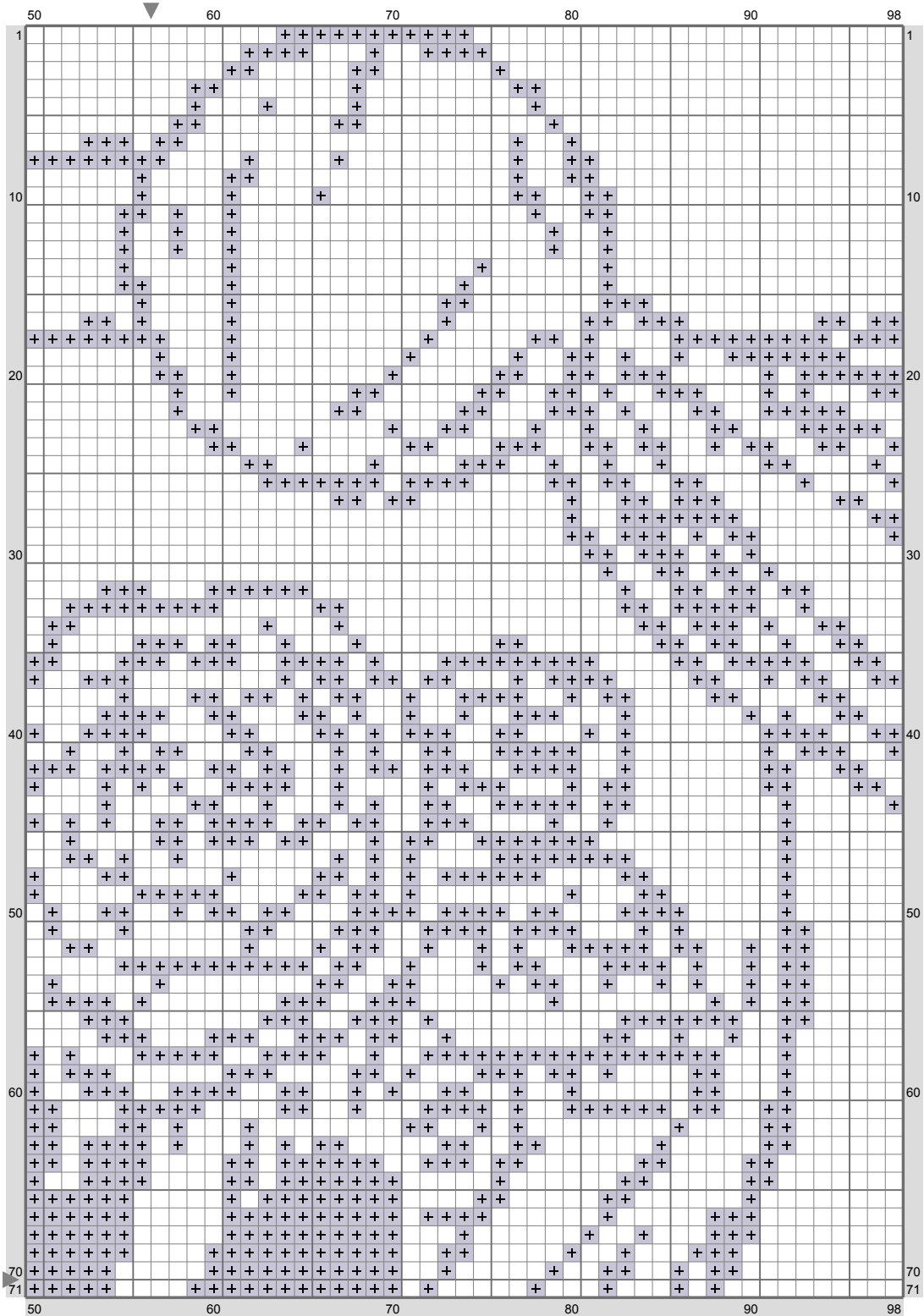


Sailor Moon Crystal



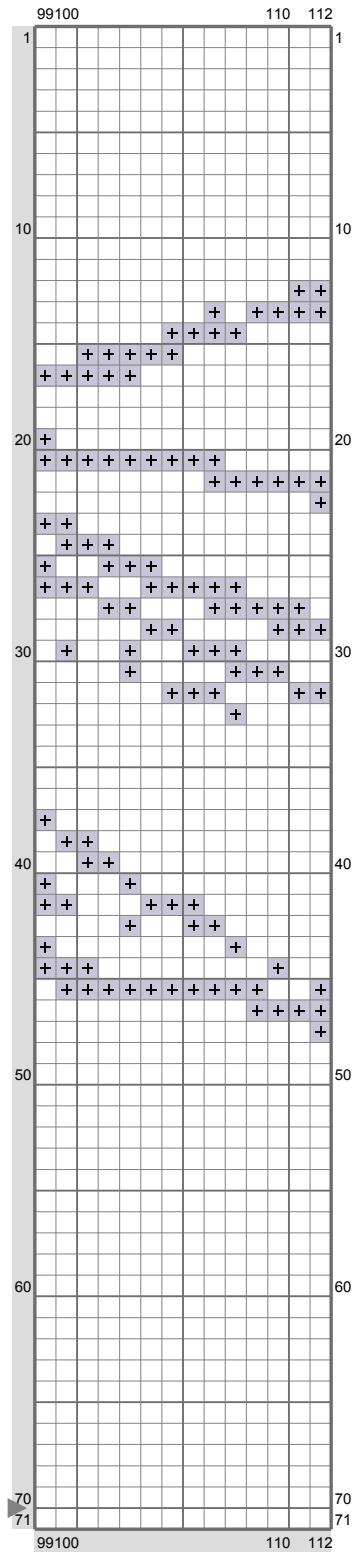
(This chart is printed using KG-Chart LE for Cross Stitch.)

Sailor Moon Crystal



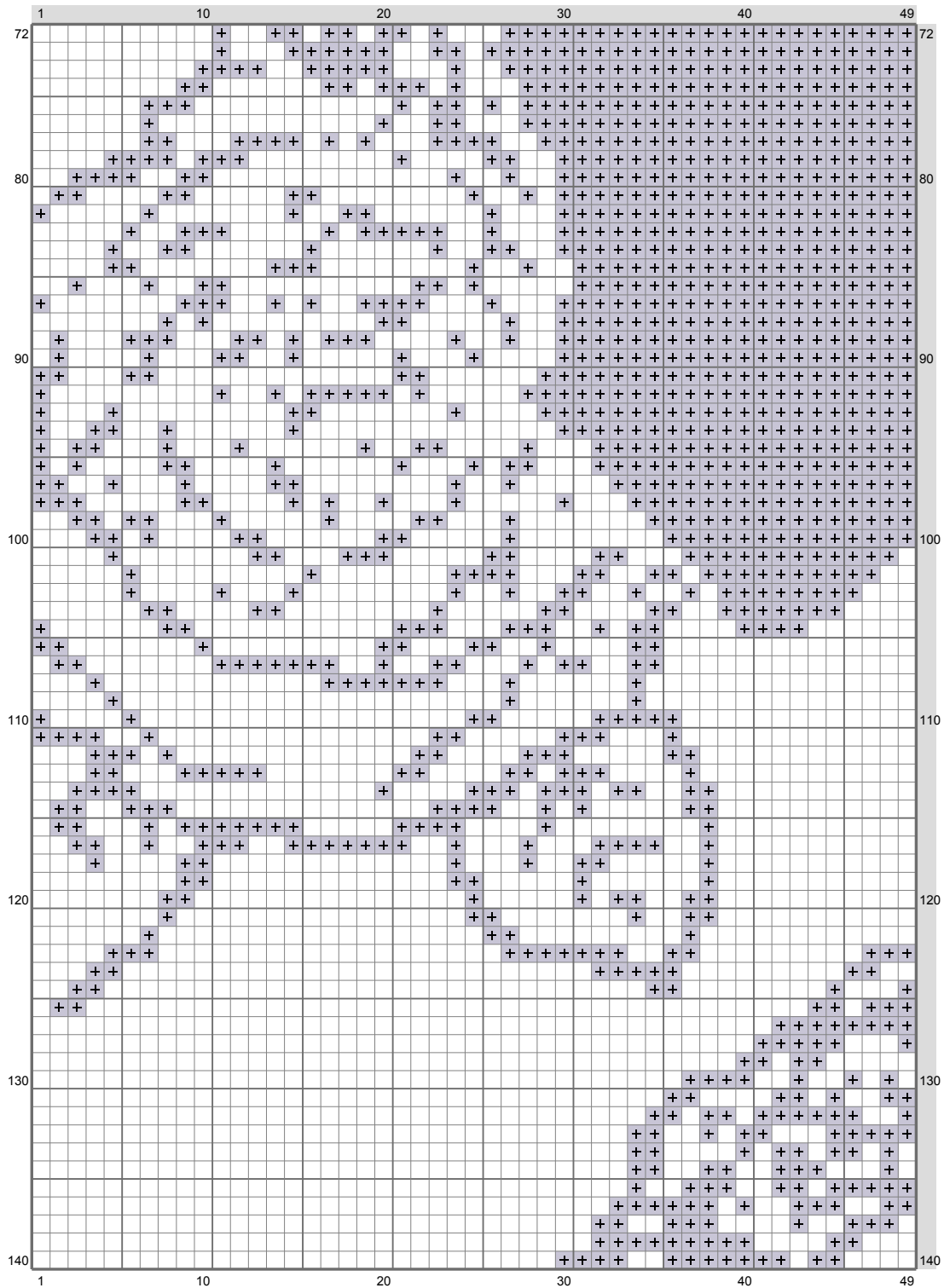
(This chart is printed using KG-Chart LE for Cross Stitch.)

Sailor Moon Crystal



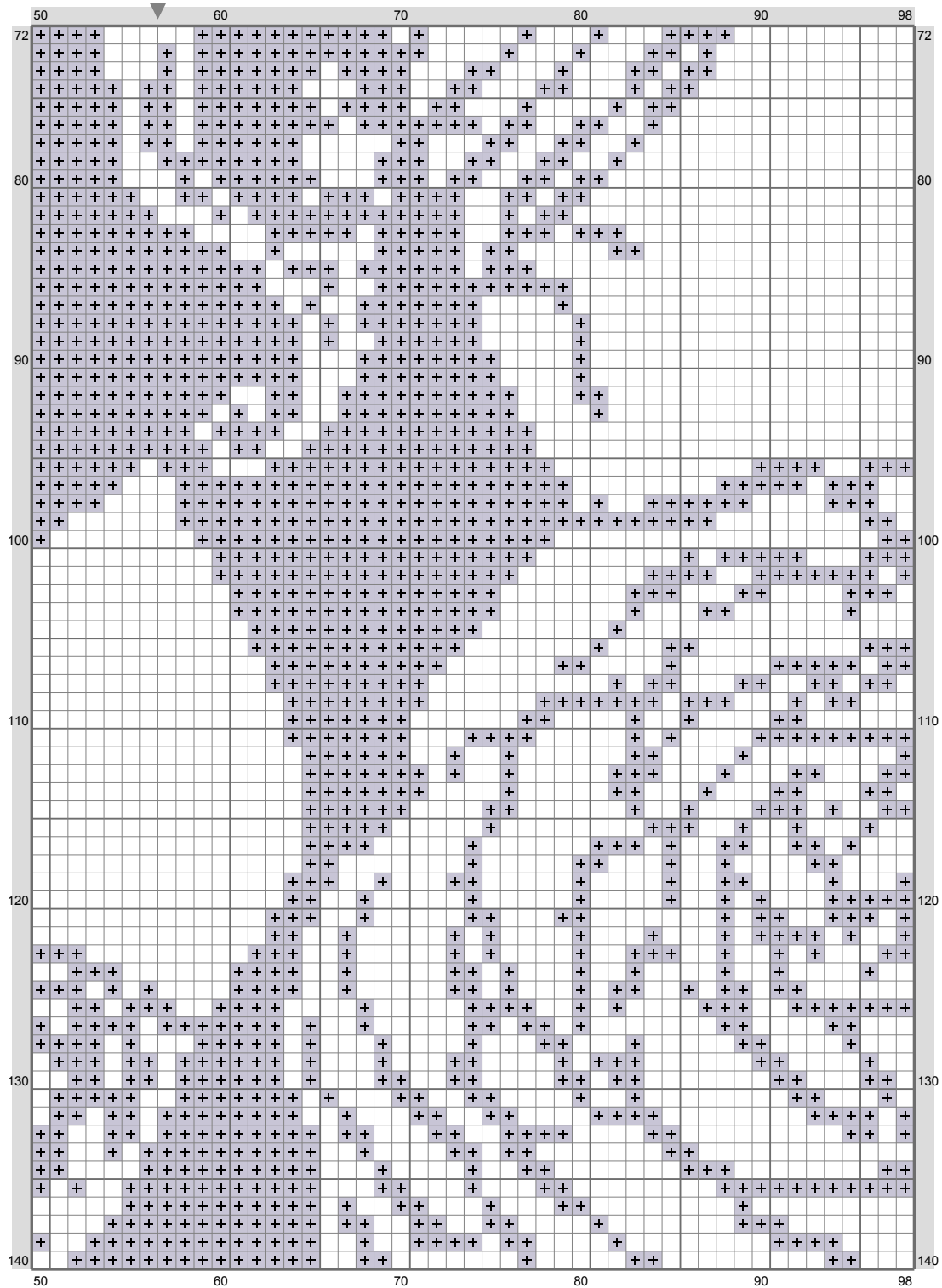
(This chart is printed using KG-Chart LE for Cross Stitch.)

Sailor Moon Crystal



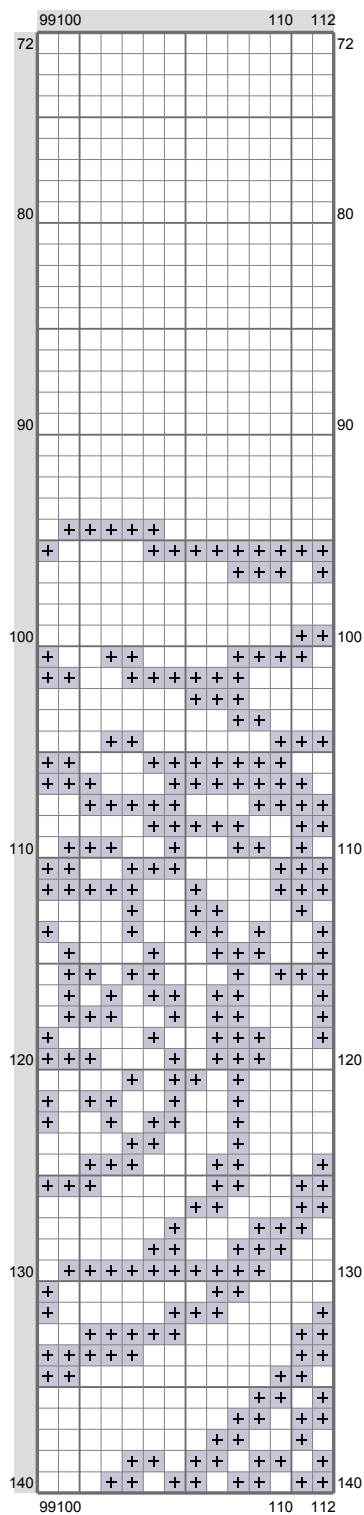
(This chart is printed using KG-Chart LE for Cross Stitch.)

Sailor Moon Crystal



(This chart is printed using KG-Chart LE for Cross Stitch.)

Sailor Moon Crystal



Stitch Count: 112w x 140h
 Finished Size: 20.32 cm x 25.4 cm (28 ct./inch)
 Cloth: Linen
 Cloth's Color: Black
 # of colors: 1 Colors

Color Table (DMC)

Cross Stitch

+ 318 (5041 ct)

(This chart is printed using KG-Chart LE for Cross Stitch.)