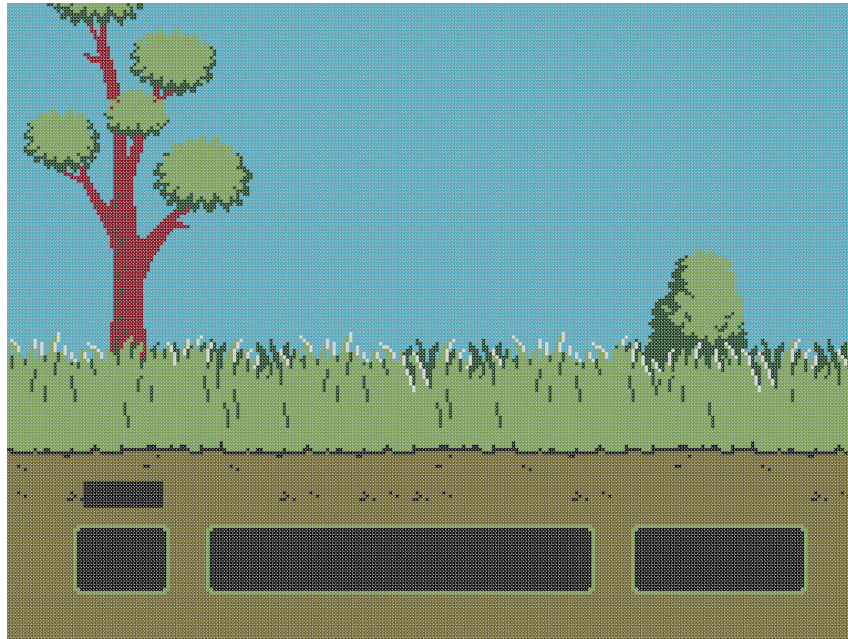


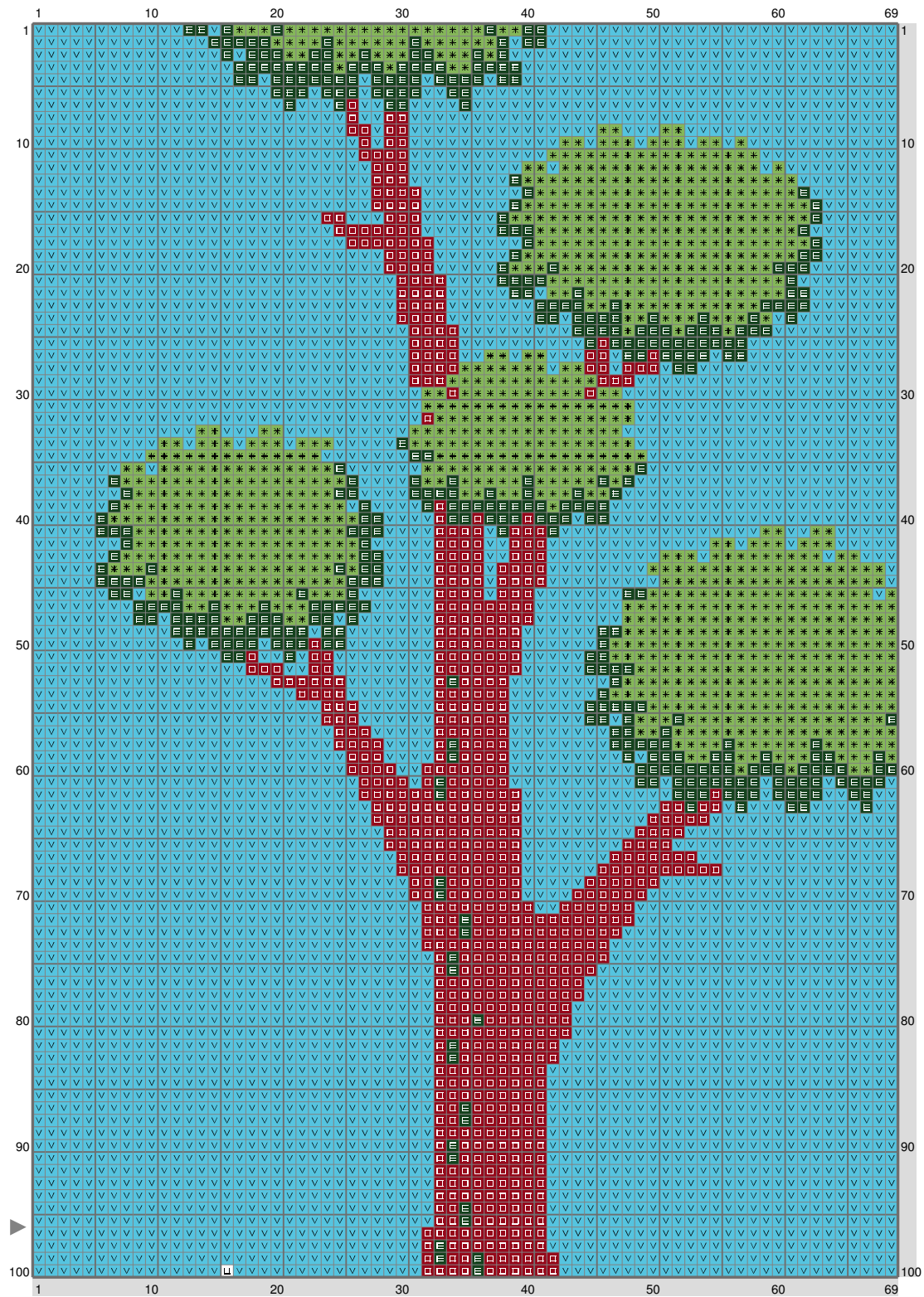
DH Screen

Copyright (C) 2016 me



DH Screen

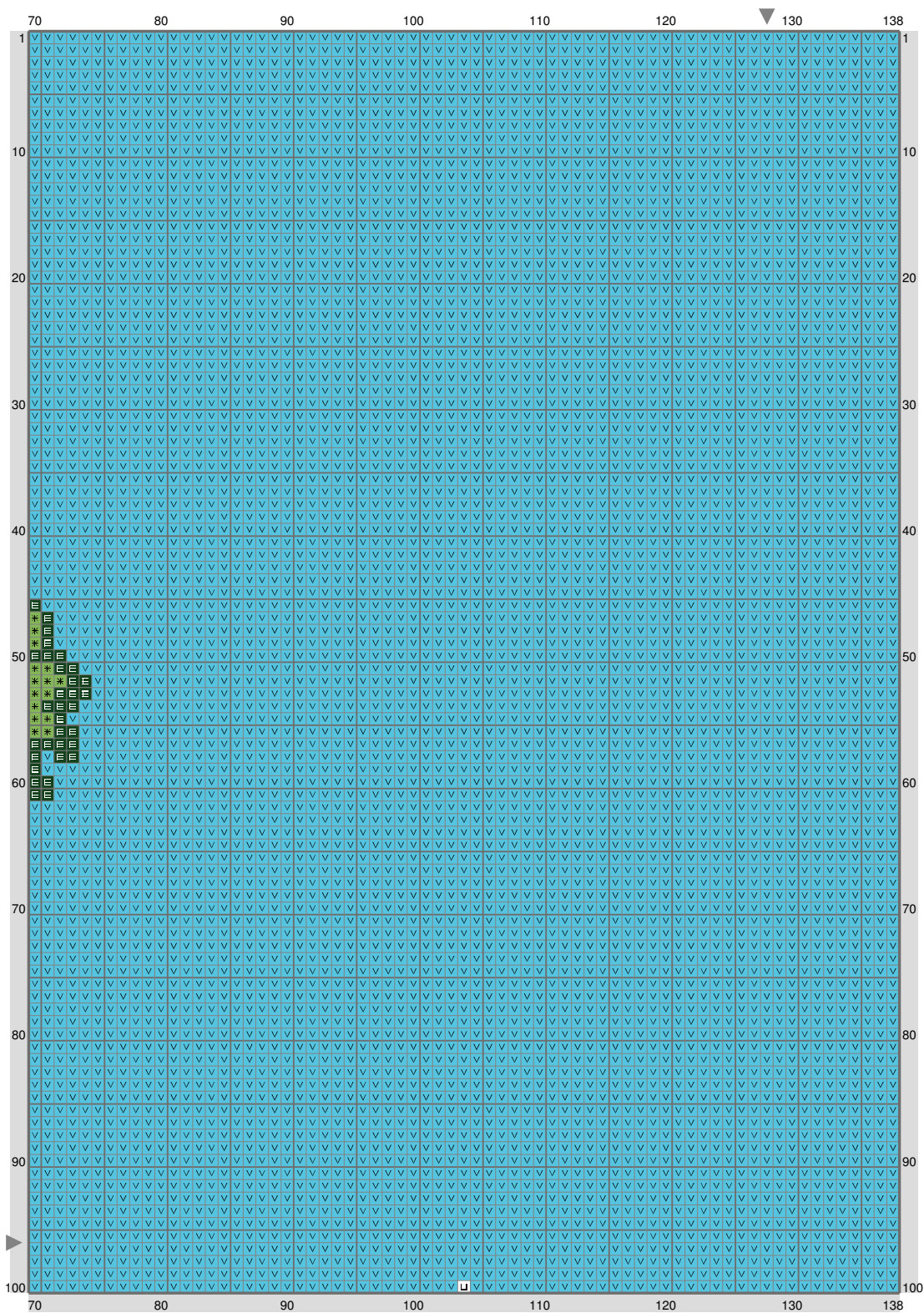
Copyright (C) 2016 me



(This chart is created/printed using KG-Chart Pro for Cross Stitch. : Unregistered)

DH Screen

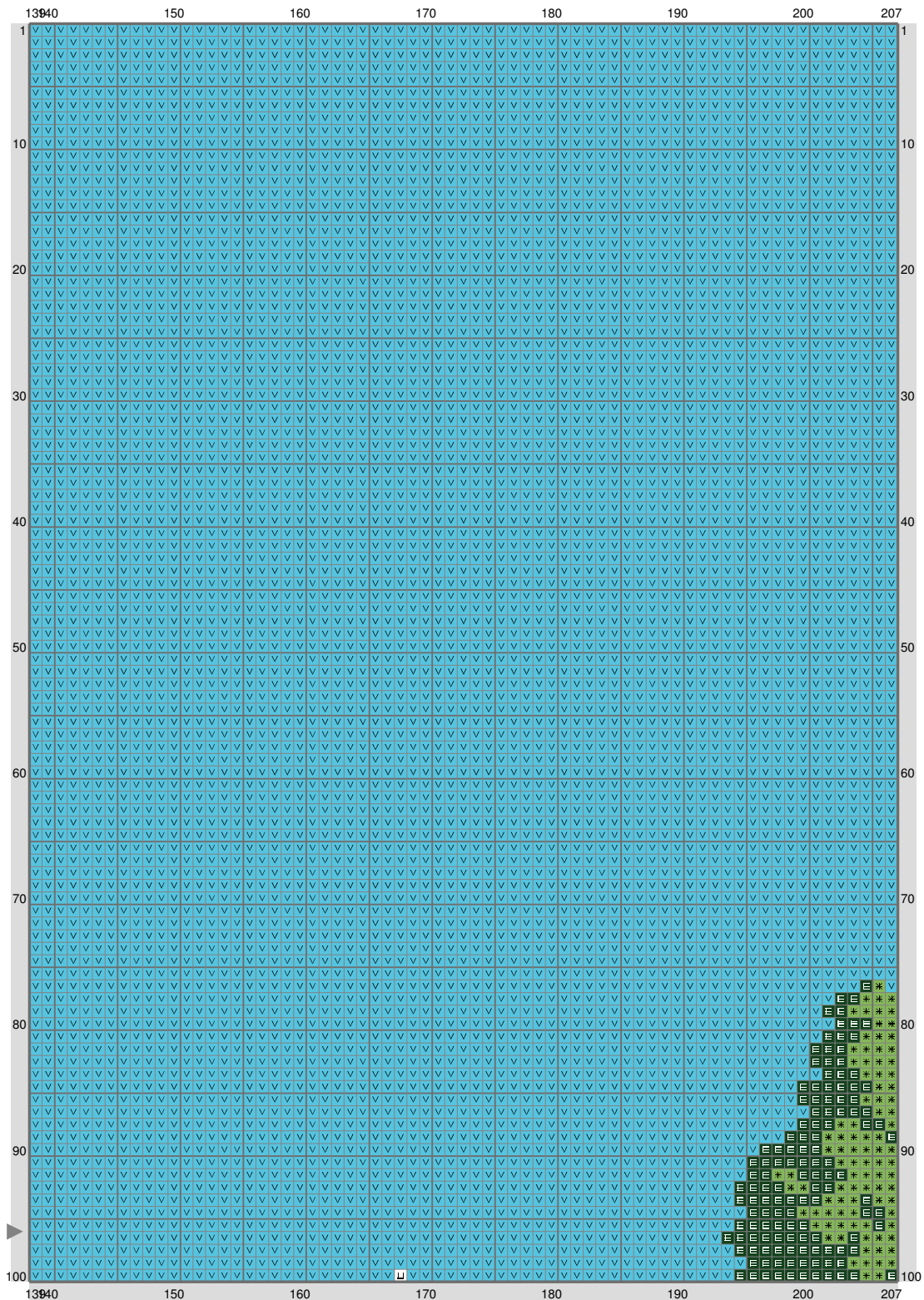
Copyright (C) 2016 me



(This chart is created/printed using KG-Chart Pro for Cross Stitch. : Unregistered)

DH Screen

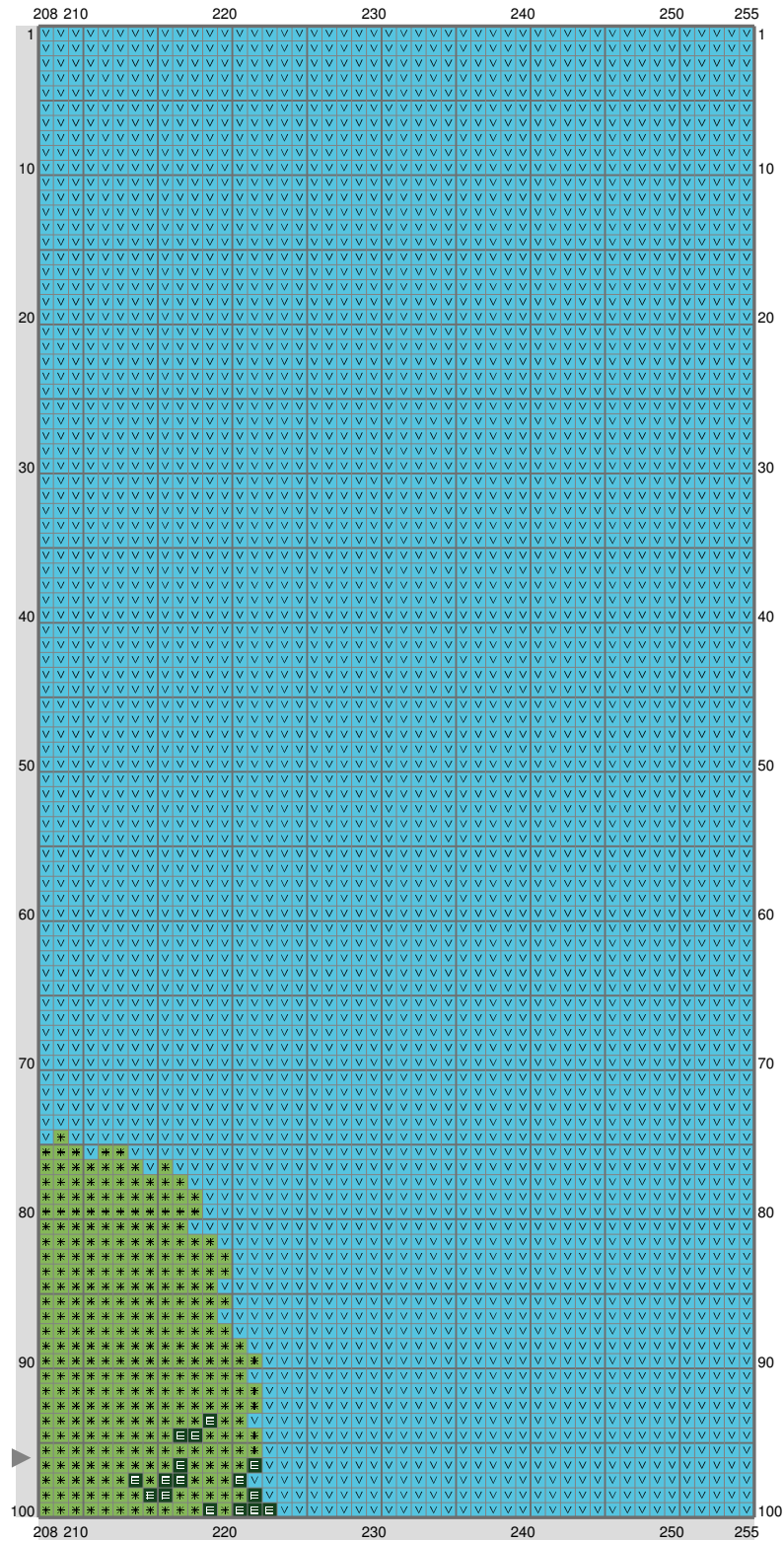
Copyright (C) 2016 me



(This chart is created/printed using KG-Chart Pro for Cross Stitch. : Unregistered)

DH Screen

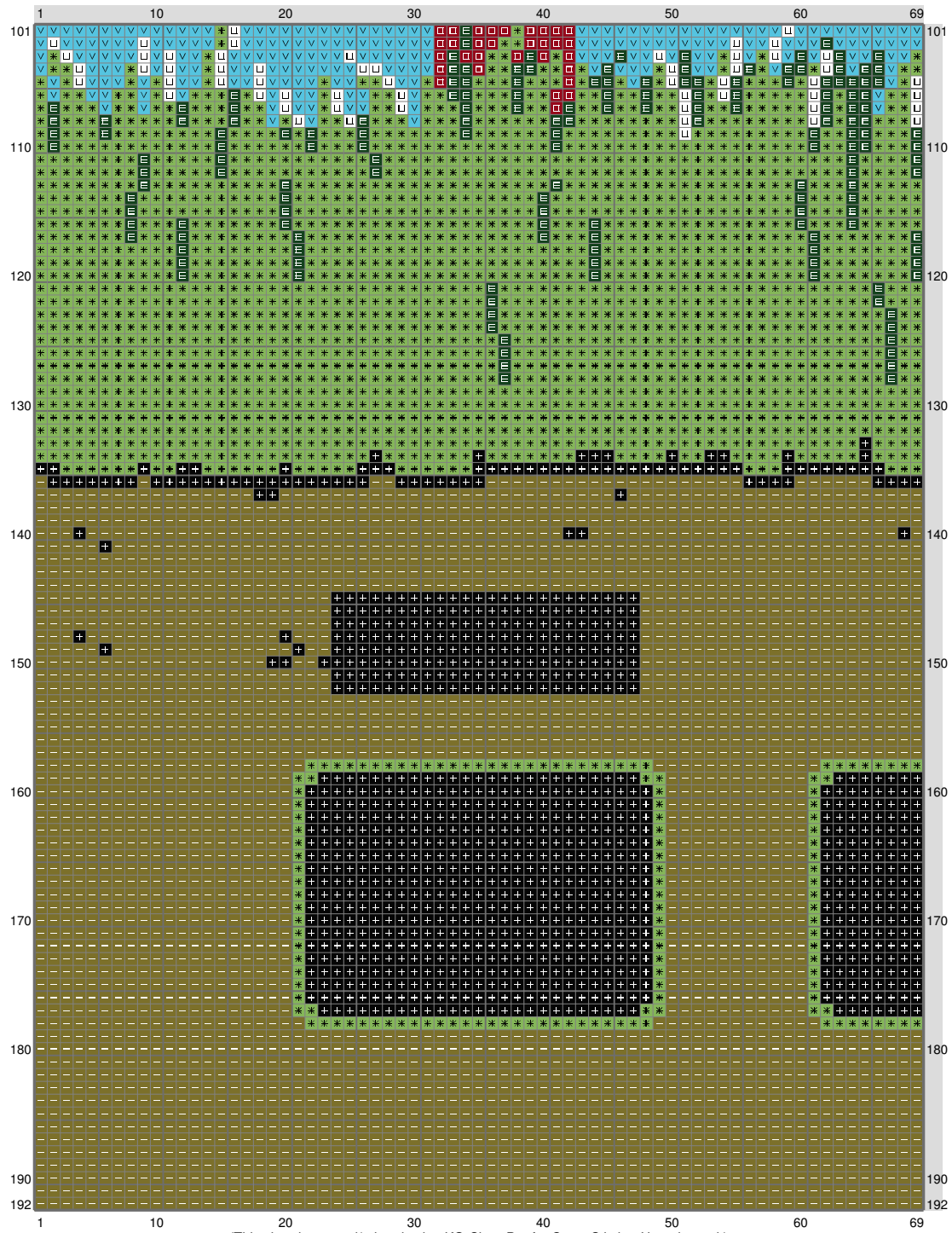
Copyright (C) 2016 me



(This chart is created/printed using KG-Chart Pro for Cross Stitch. : Unregistered)

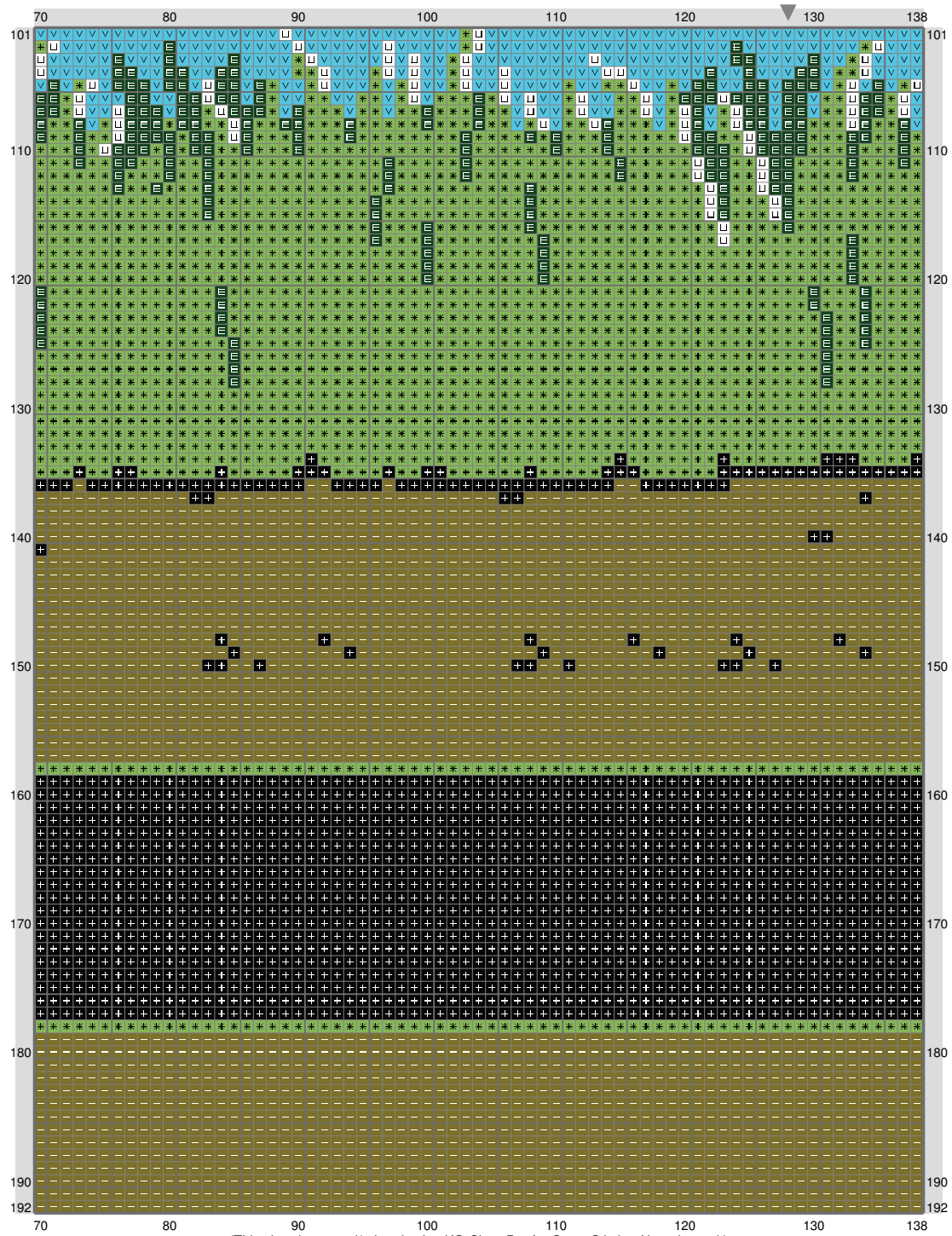
DH Screen

Copyright (C) 2016 me



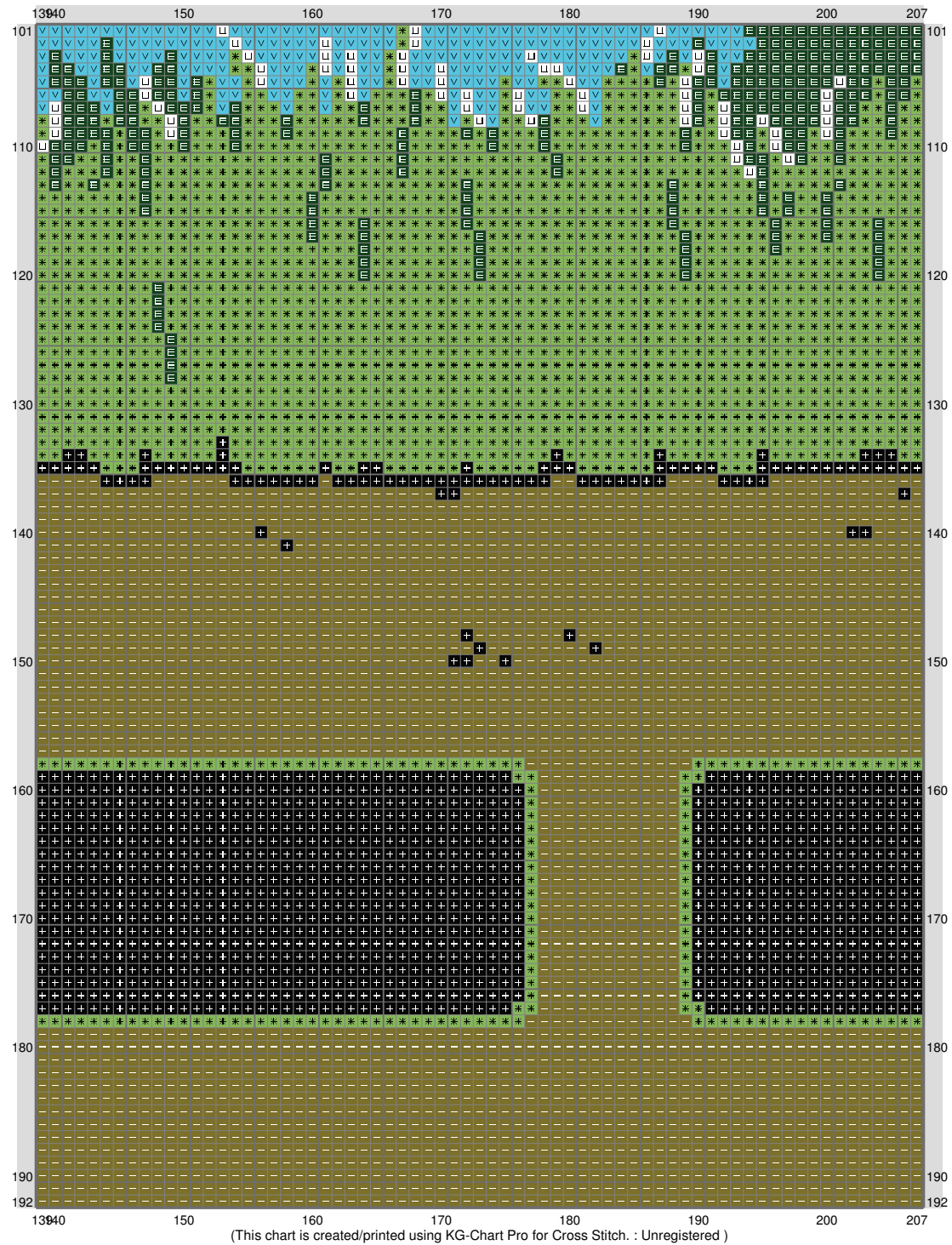
DH Screen

Copyright (C) 2016 me



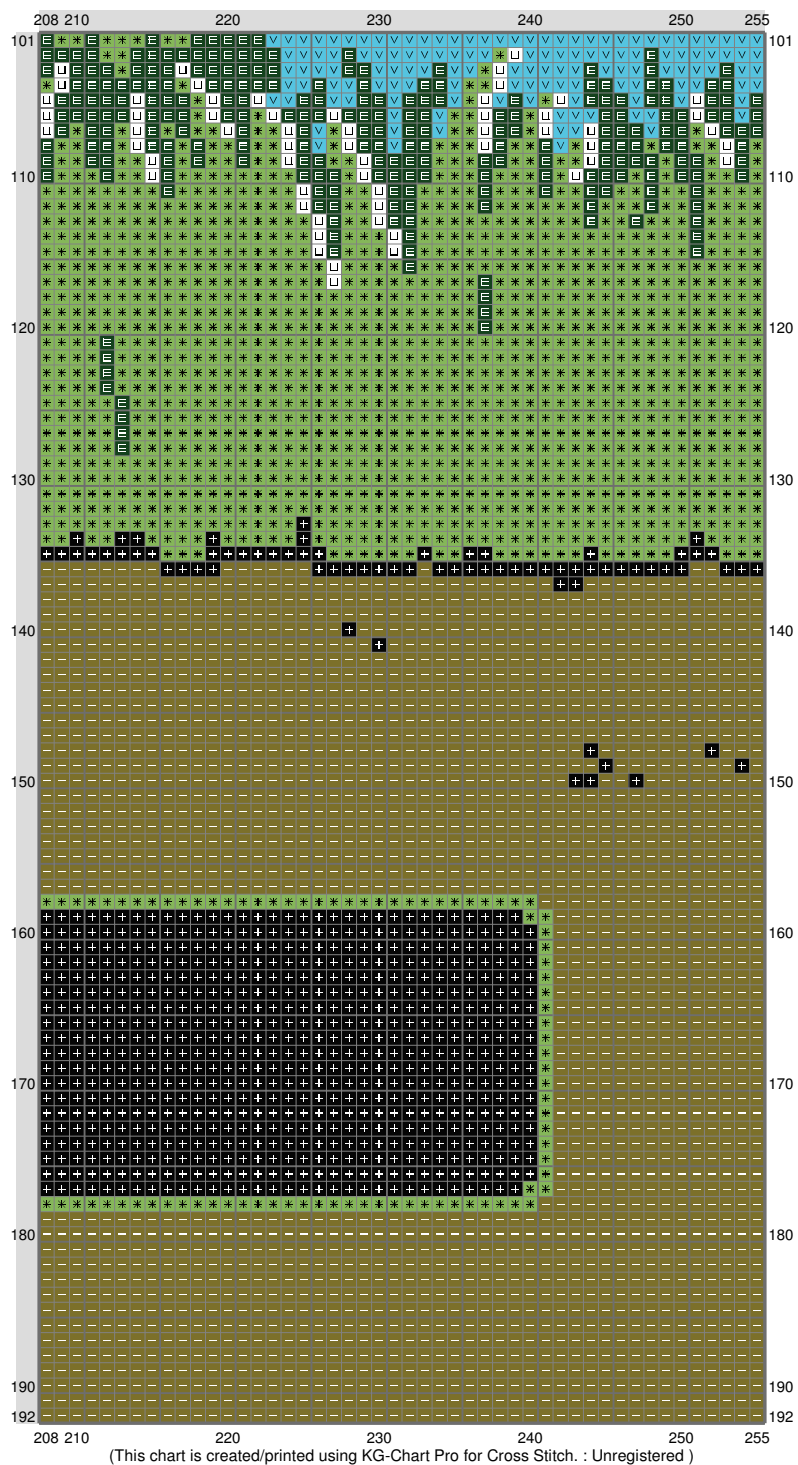
DH Screen

Copyright (C) 2016 me



DH Screen

Copyright (C) 2016 me



DH Screen

Copyright (C) 2016 me

Stitch Count: 255w x 192h

Finished Size: 46.26 cm x 34.83 cm (28 ct./inch)








Cloth: Linen

Cloth's Color: White

of colors: 7 Colors

Color Table (DMC)

Cross Stitch

	310	(4238 ct)
	890	(1500 ct)
	498	(774 ct)
	730	(9950 ct)
	704	(8706 ct)
	3846	(23534 ct)
	B5200	(258 ct)