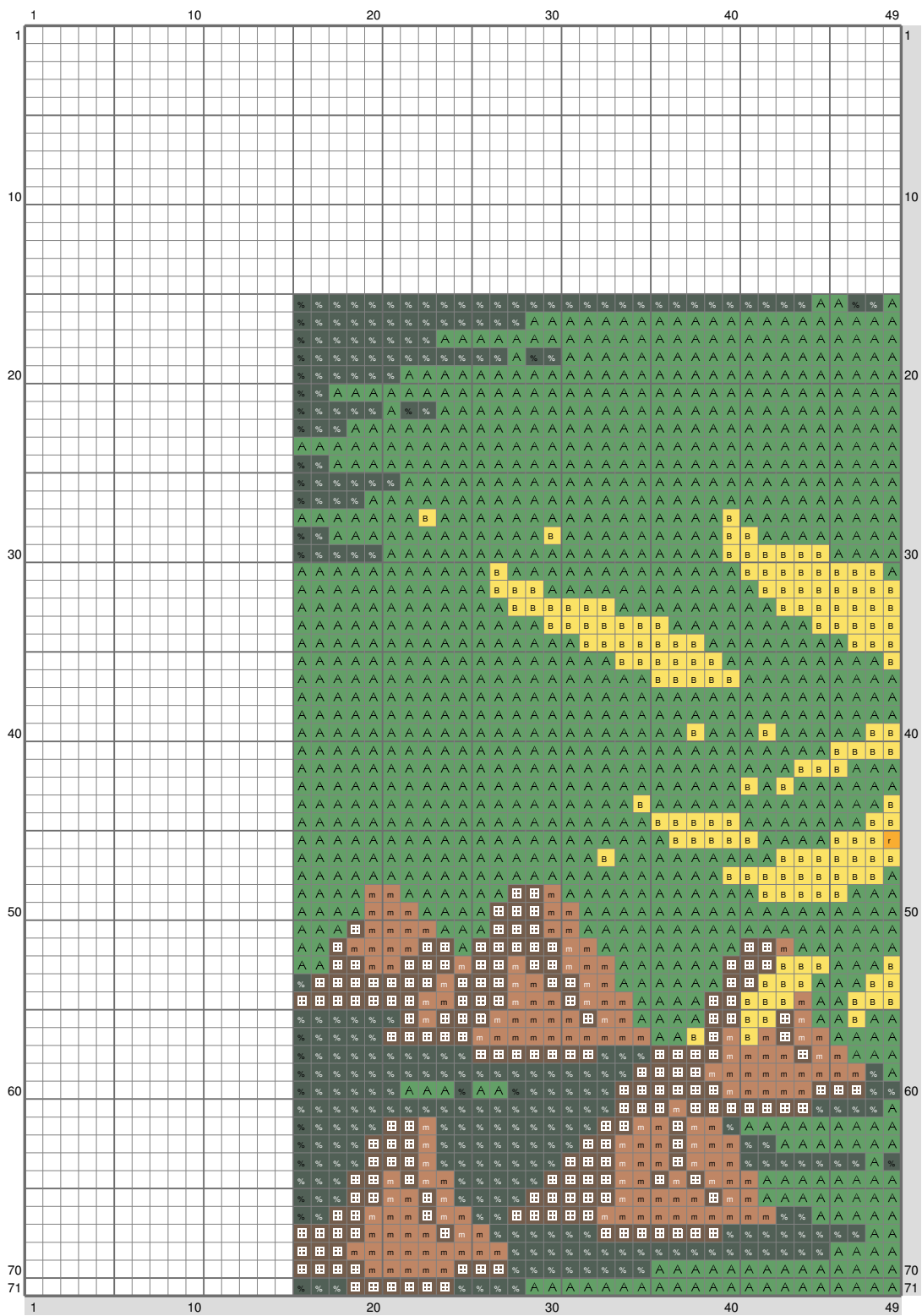
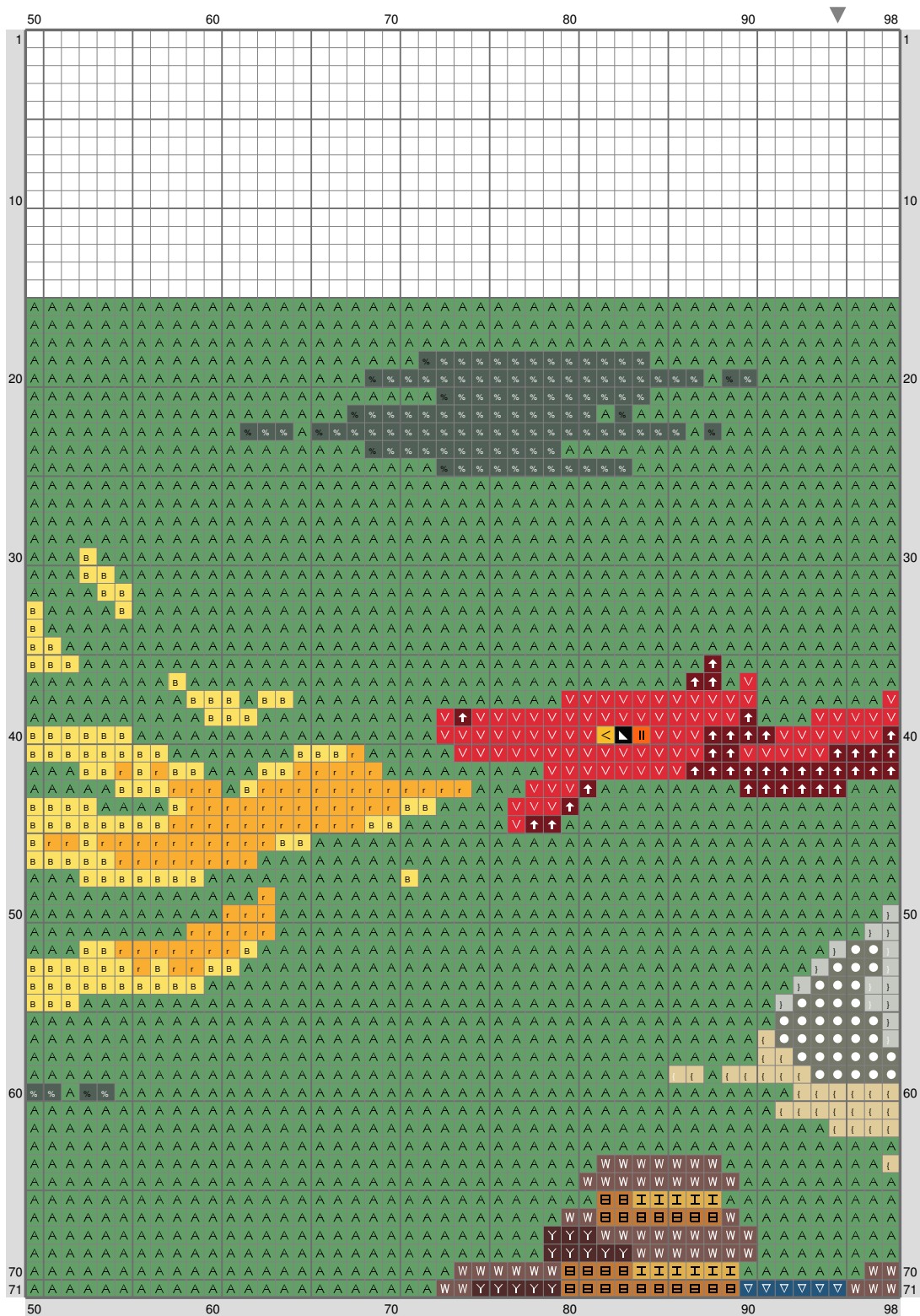


smaug

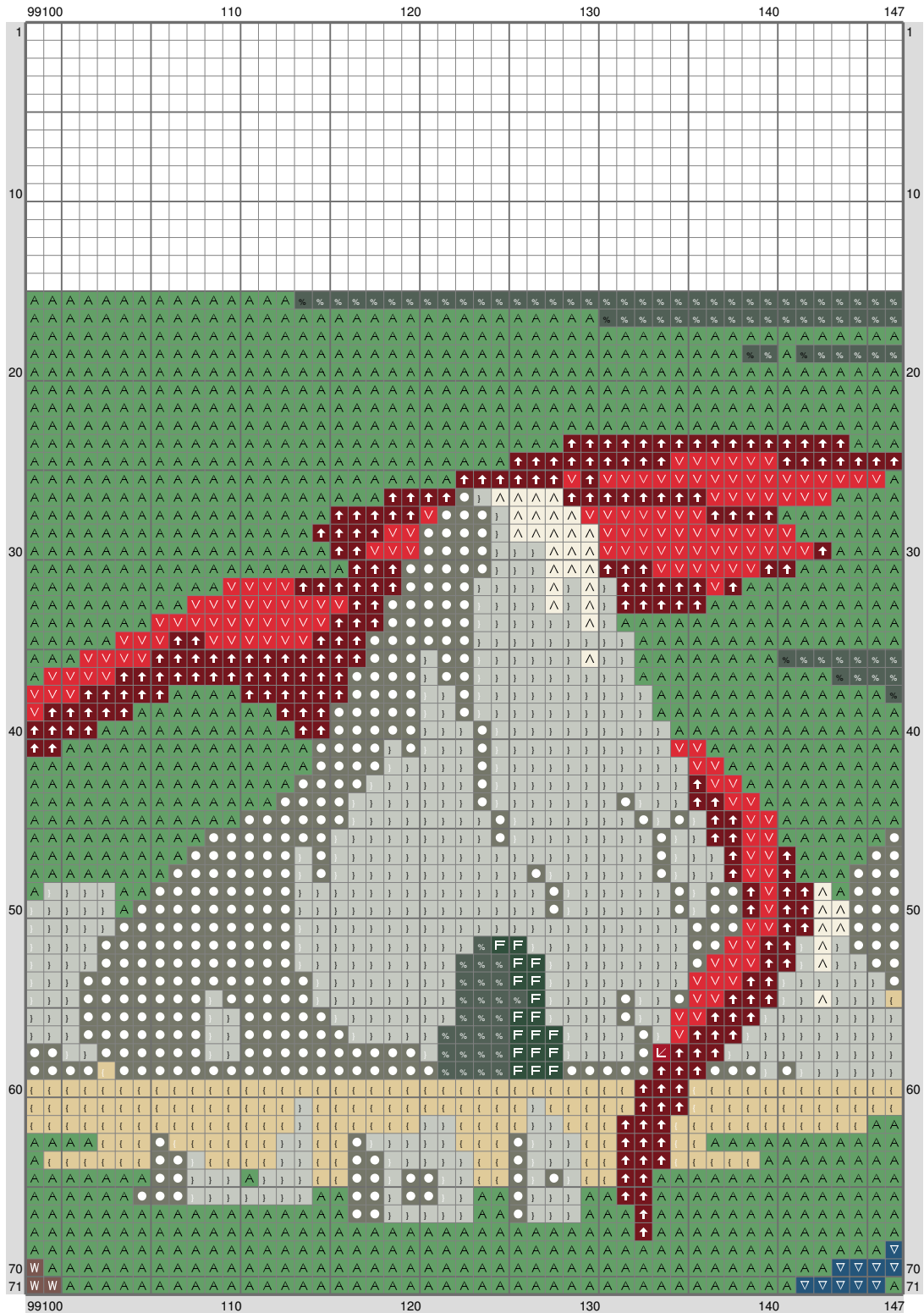


(This chart is printed using KG-Chart LE for Cross Stitch.)

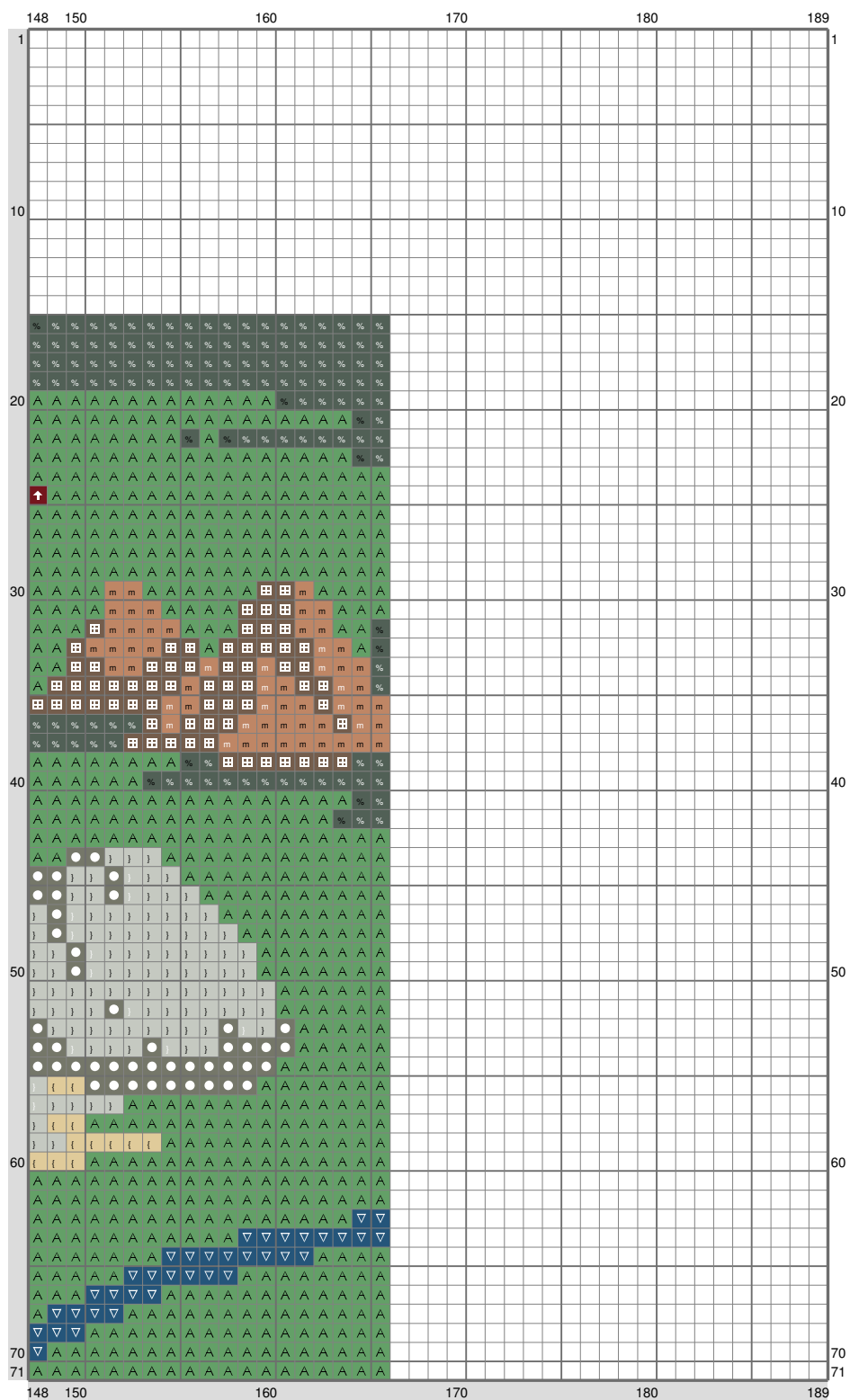
smaug



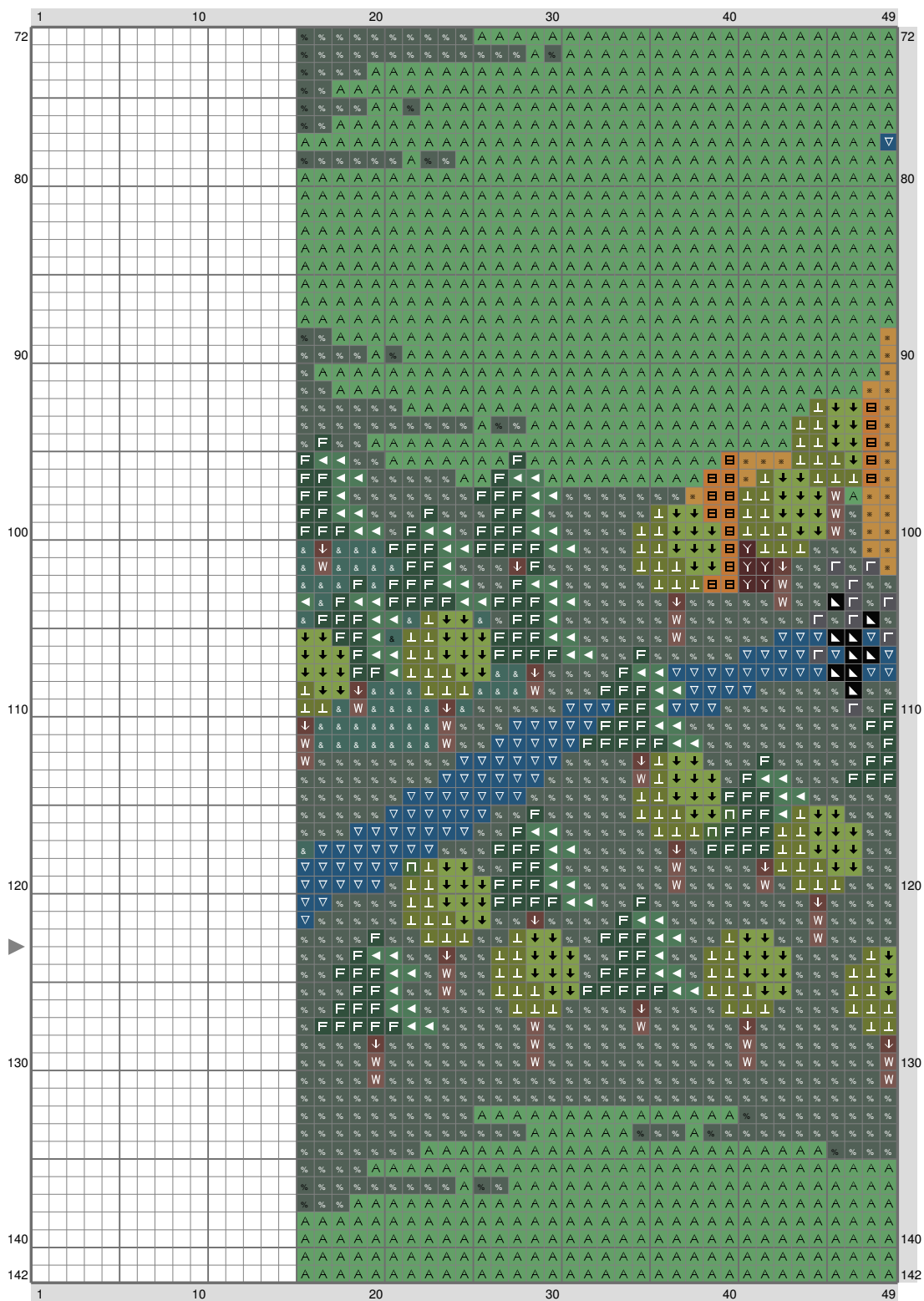
smaug



smaug

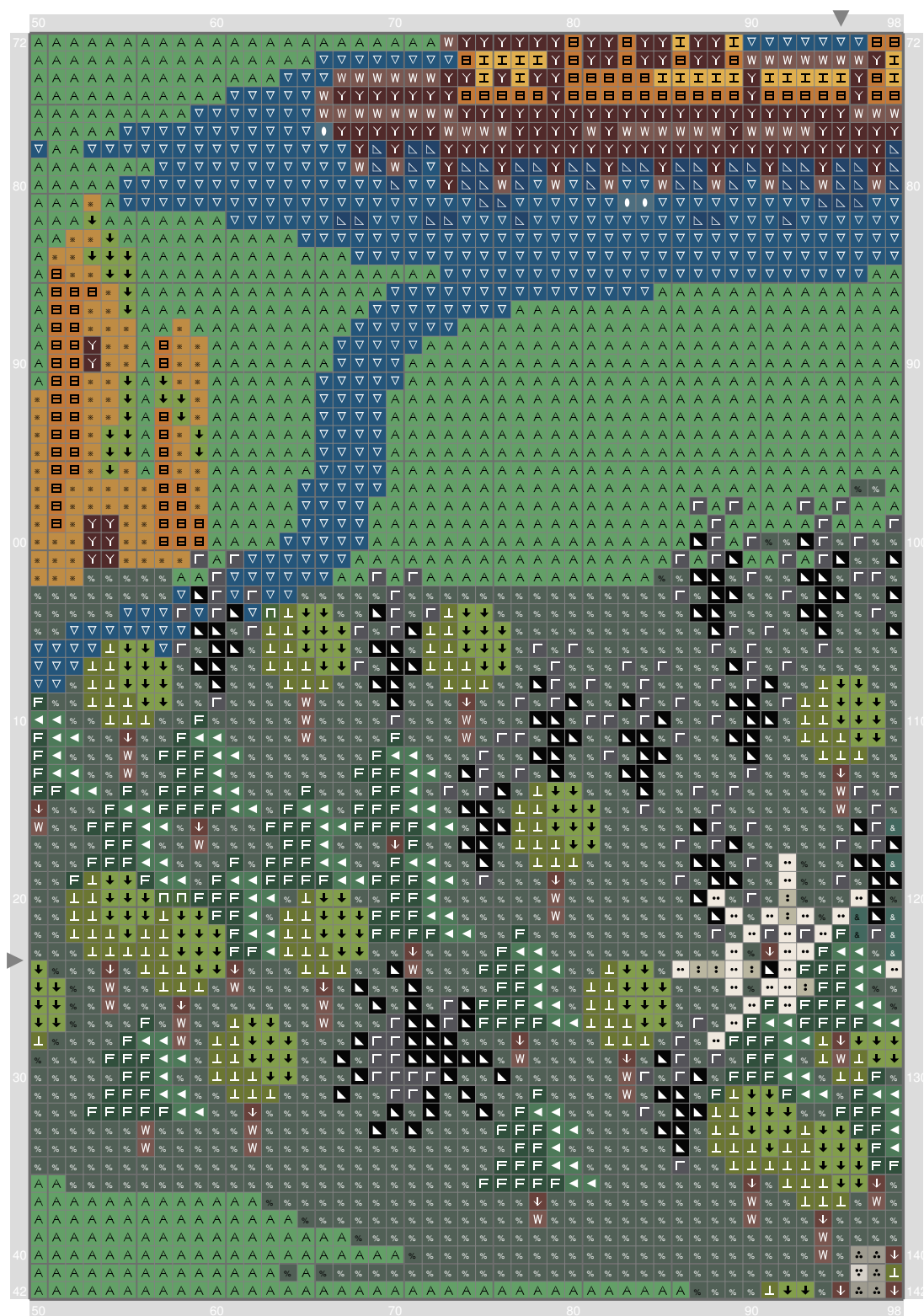


smaug



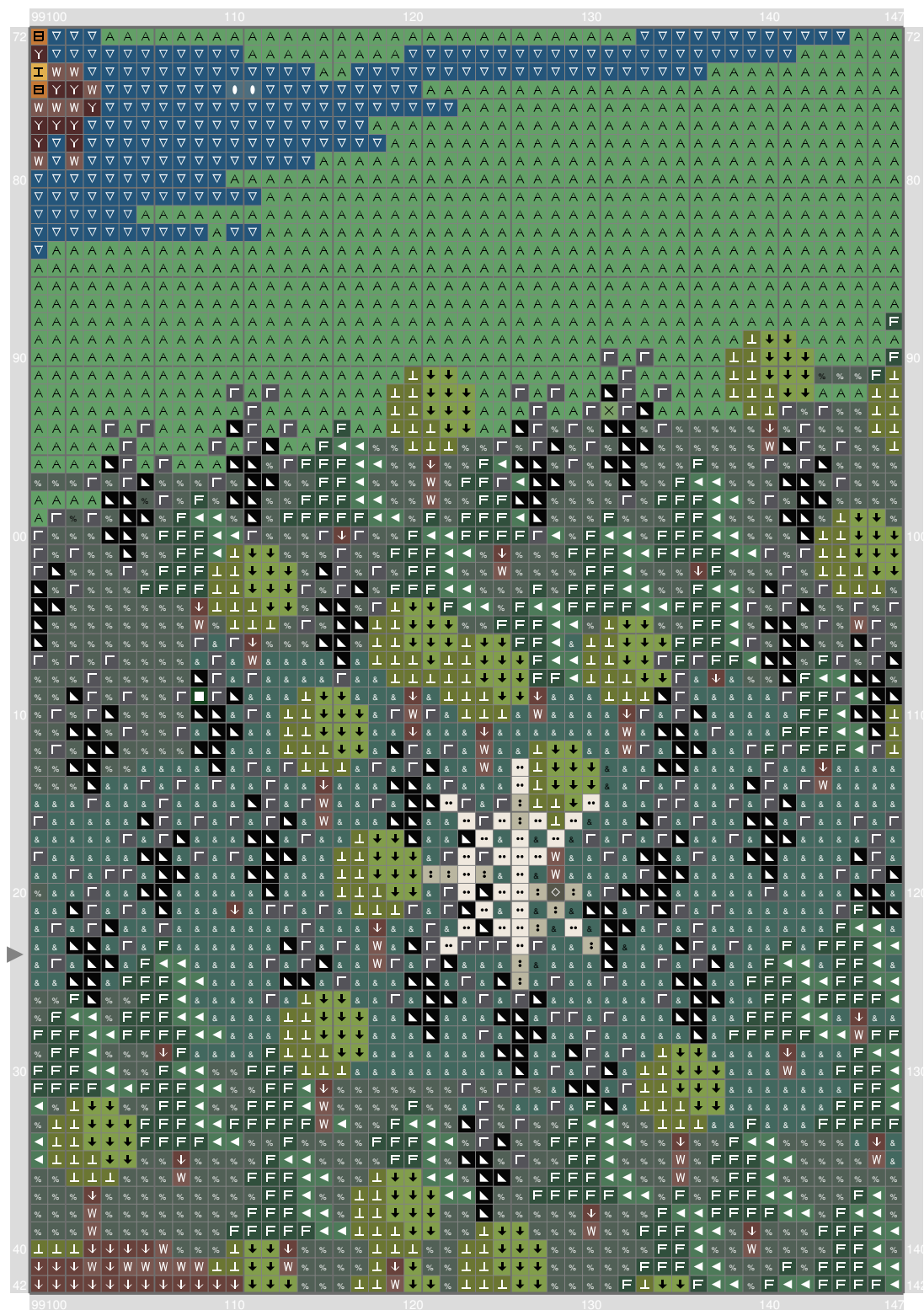
(This chart is printed using KG-Chart LE for Cross Stitch.)

smaug



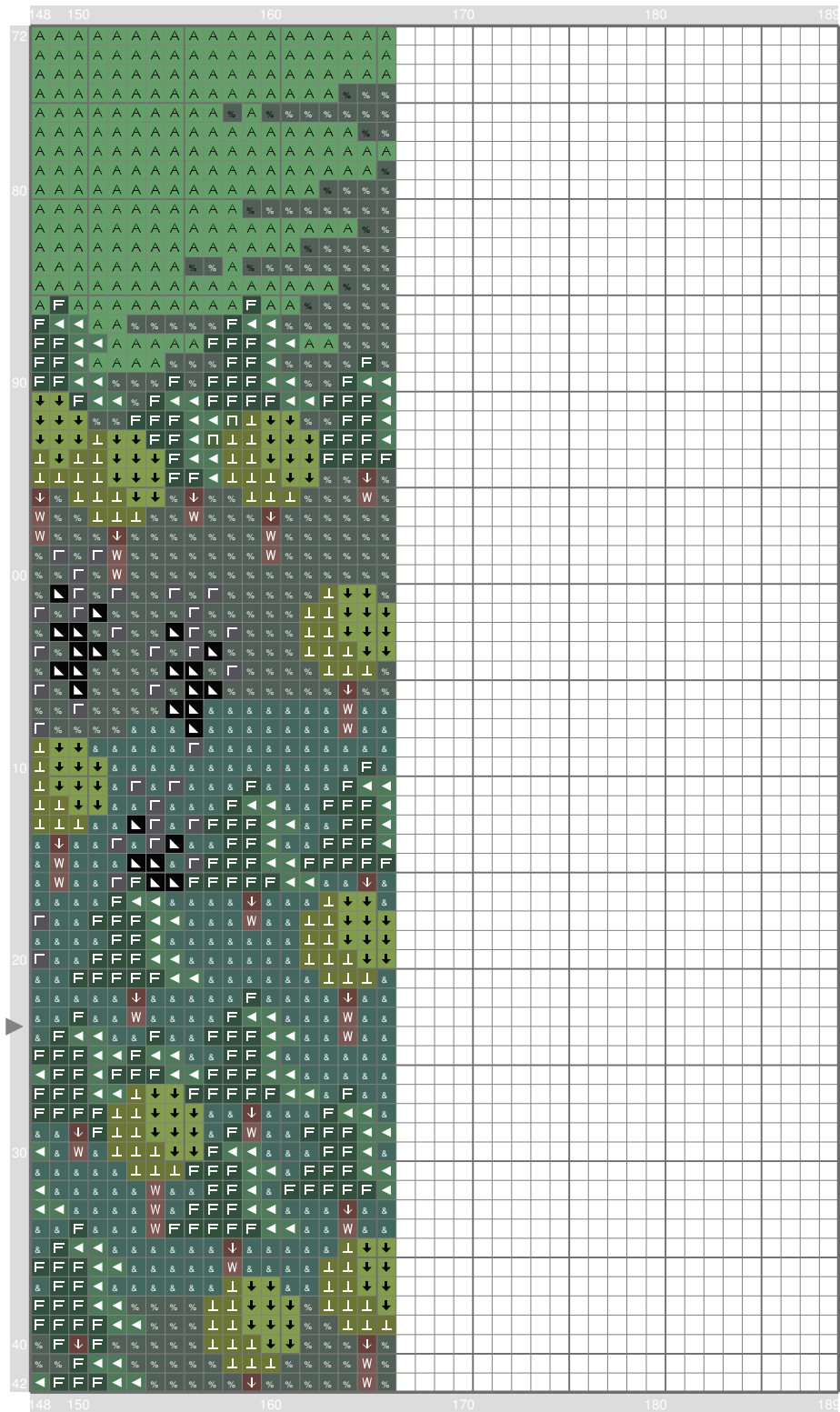
(This chart is printed using KG-Chart LE for Cross Stitch.)

smaug



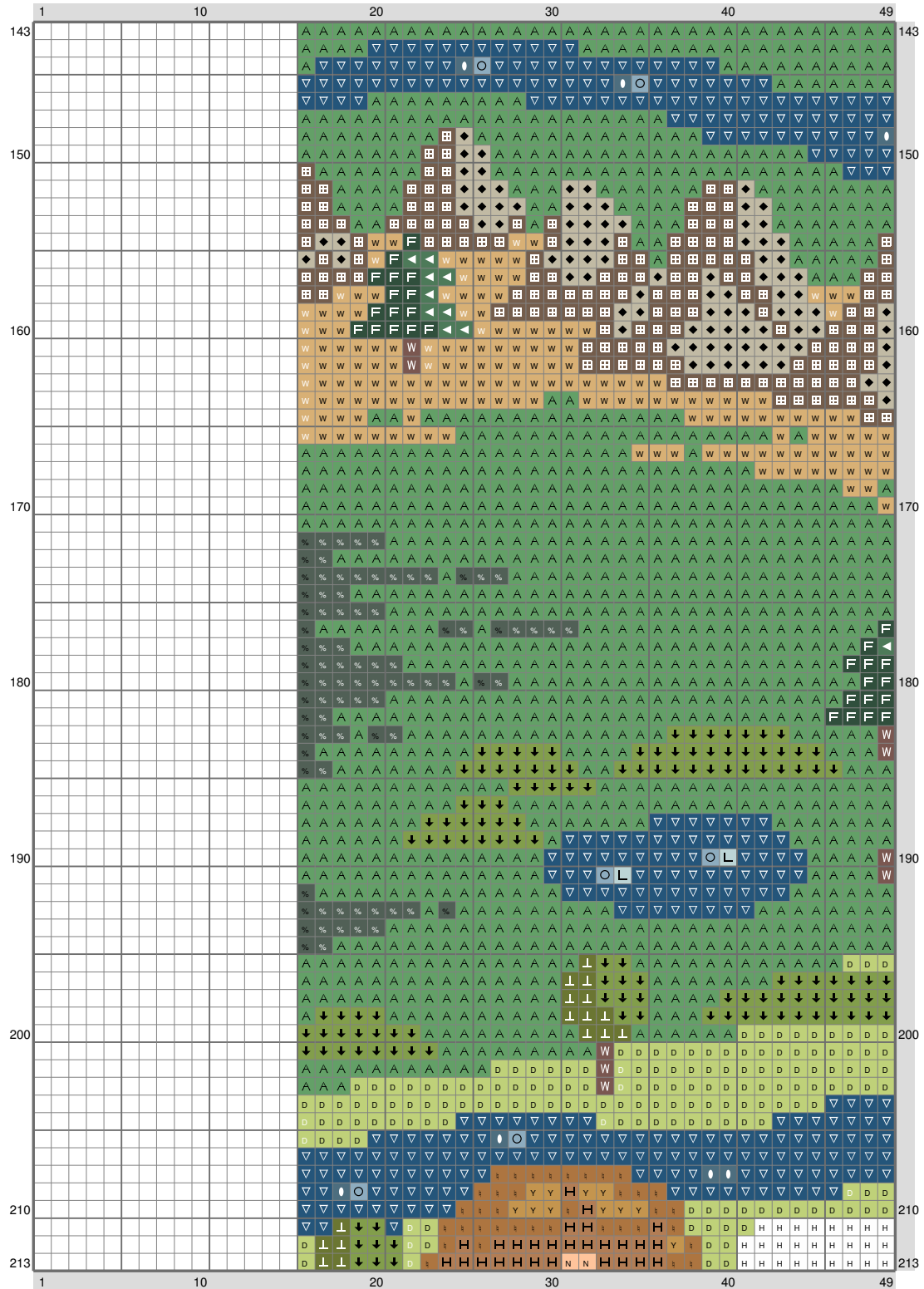
(This chart is printed using KG-Chart LE for Cross Stitch.)

smaug

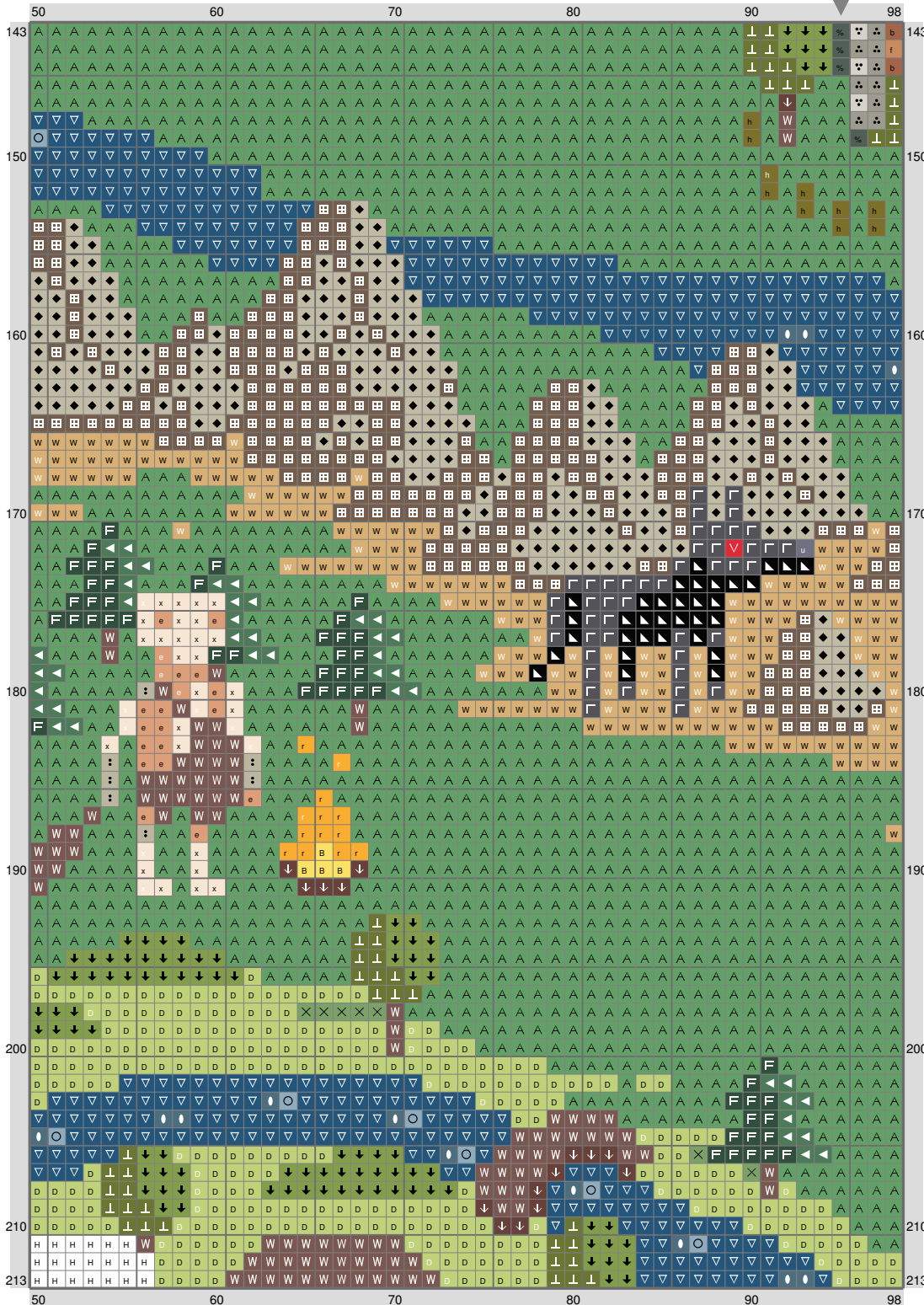


(This chart is printed using KG-Chart LE for Cross Stitch.)

smaug

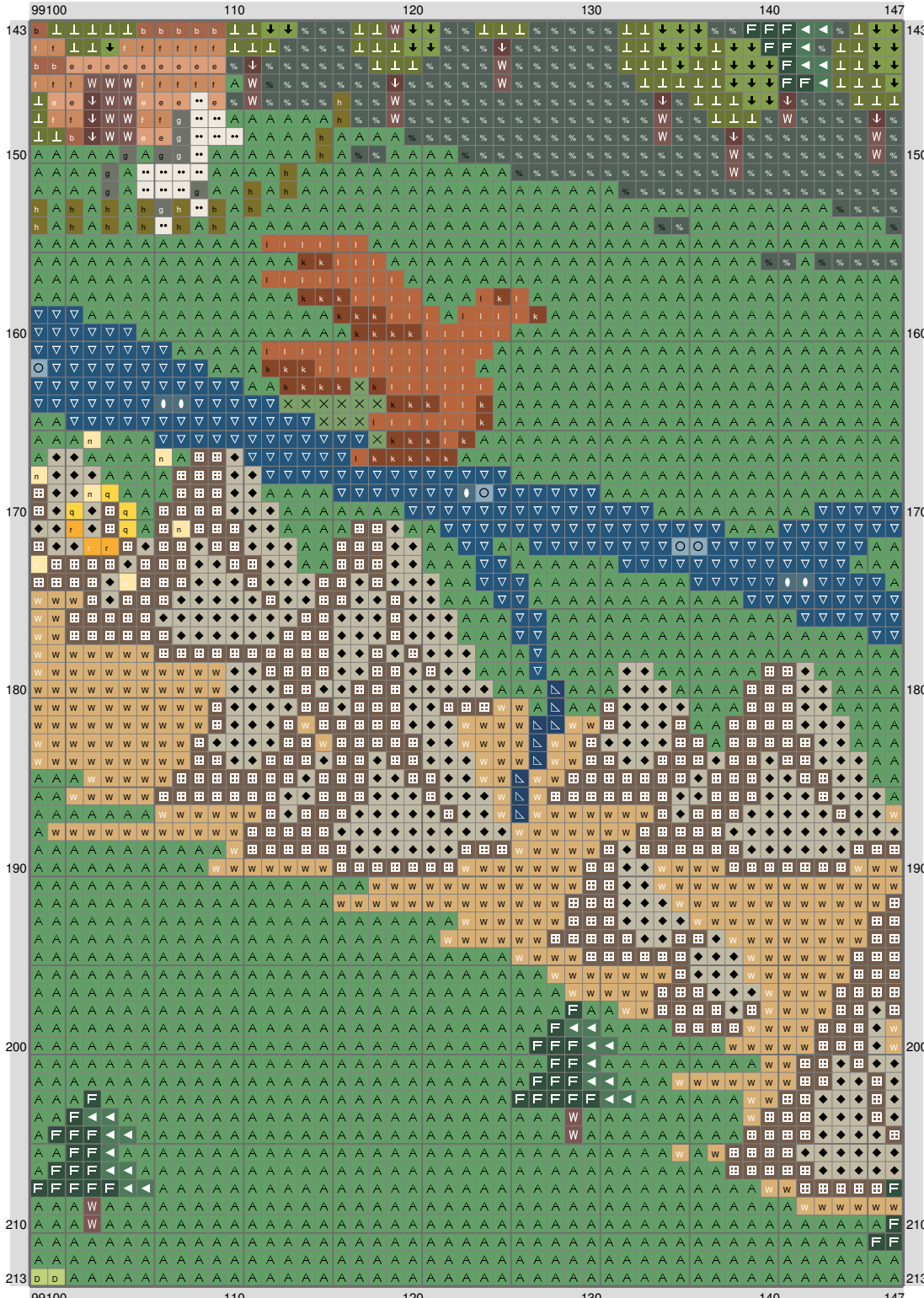


smaug



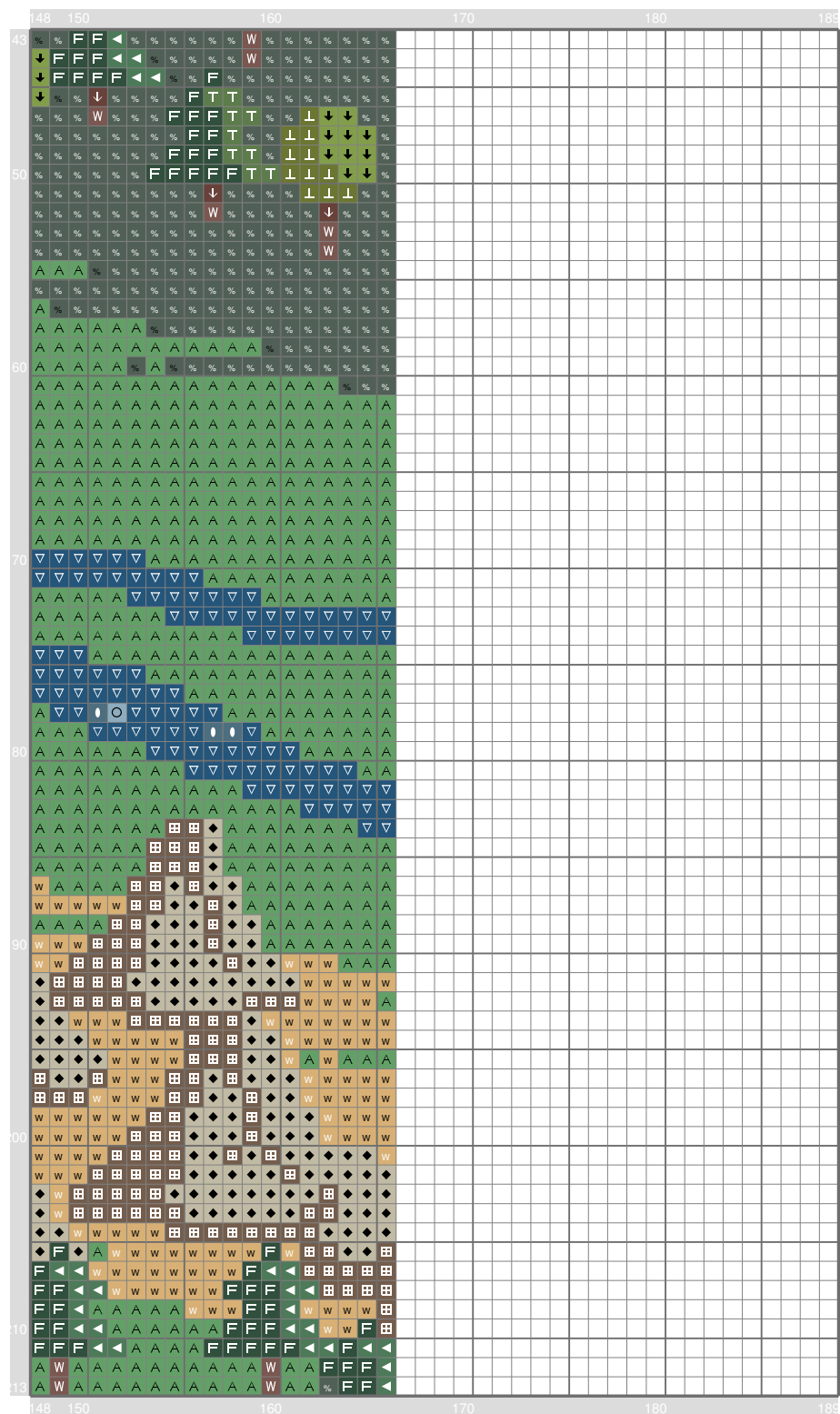
(This chart is printed using KG-Chart LE for Cross Stitch.)

smaug

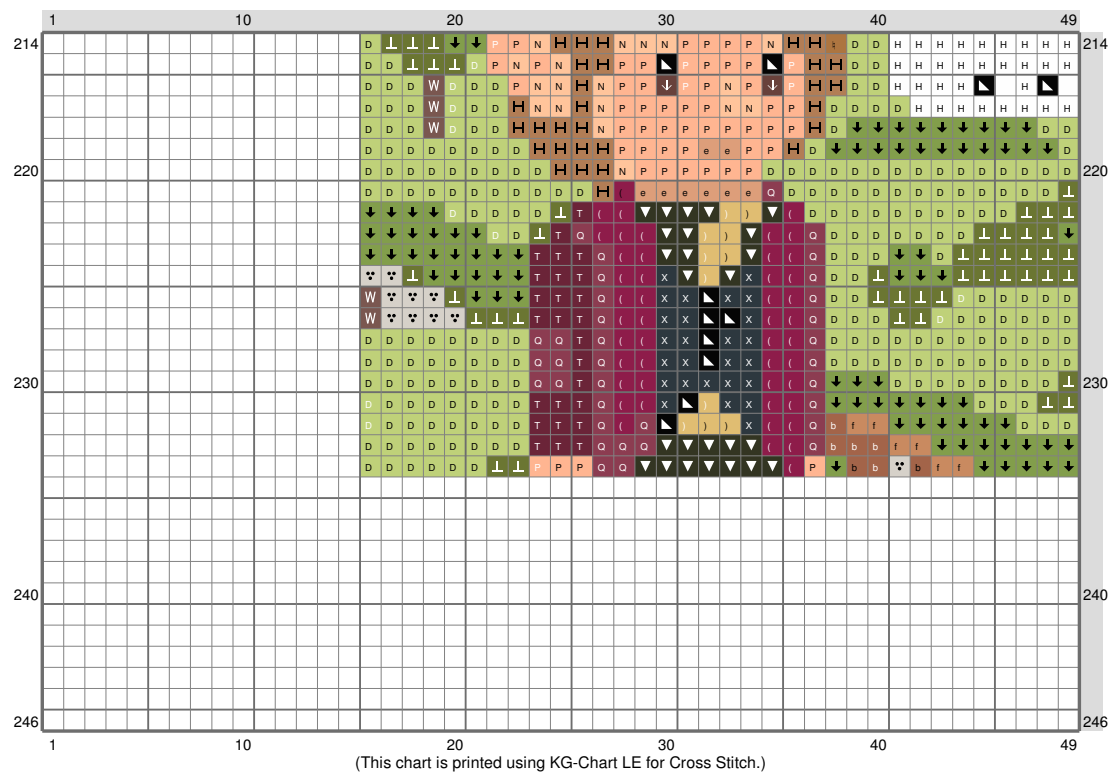


(This chart is printed using KG-Chart LE for Cross Stitch.)

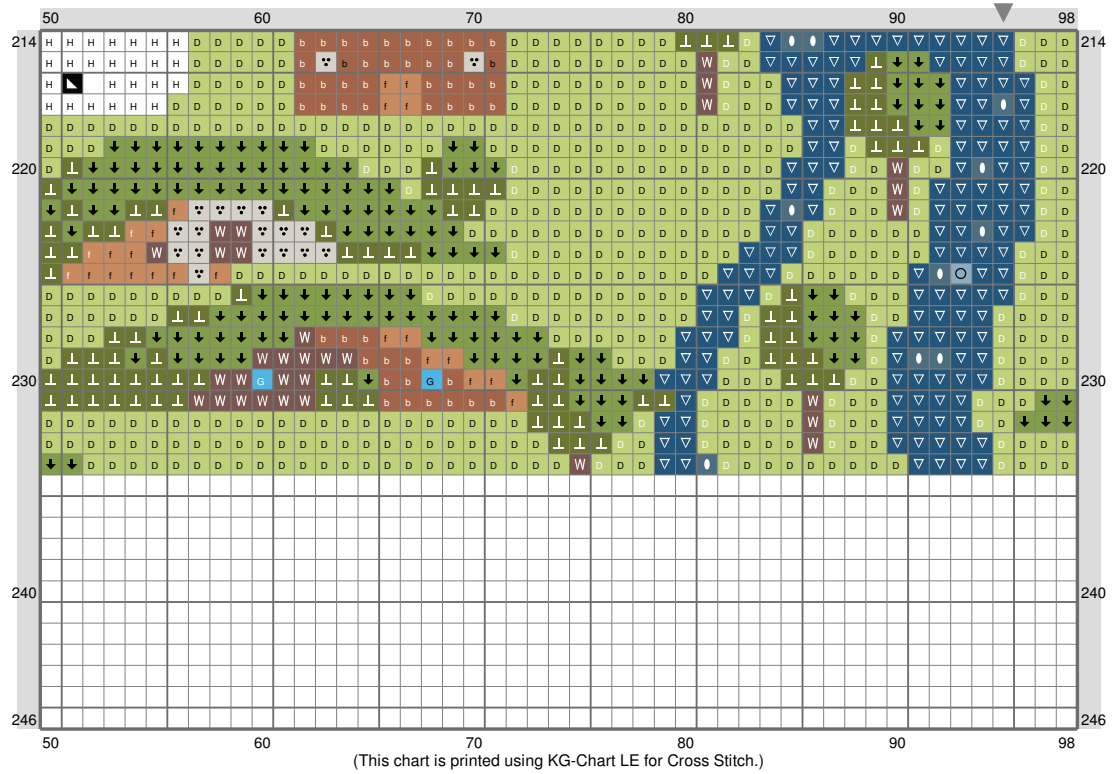
smaug



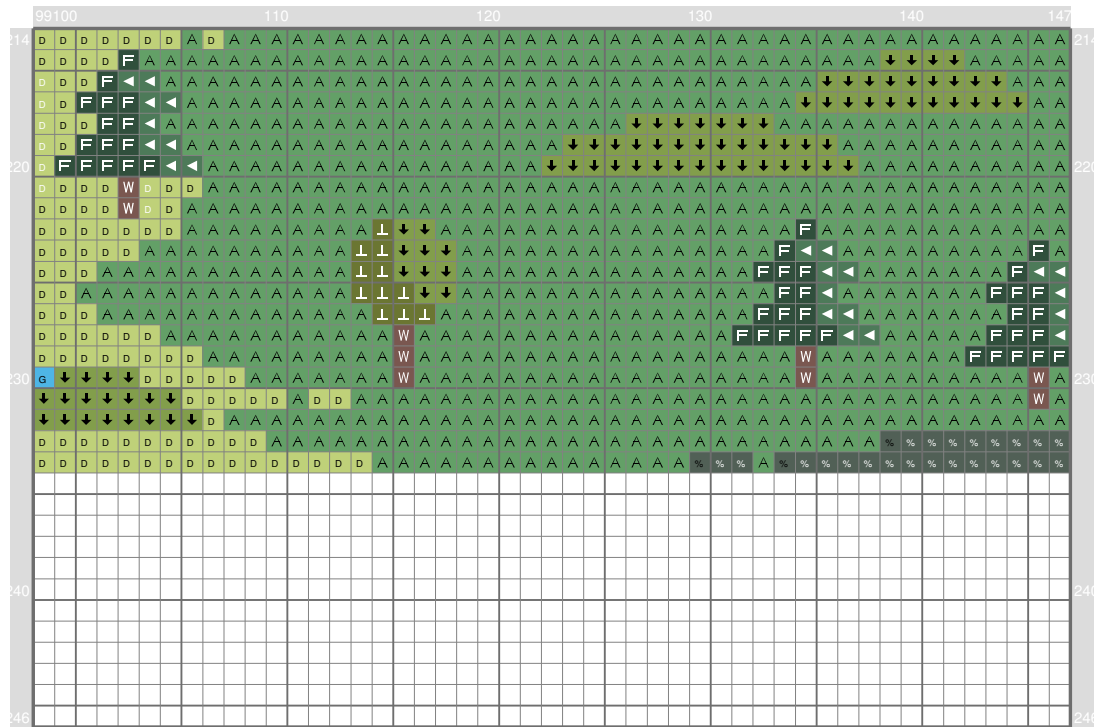
smaug



smaug

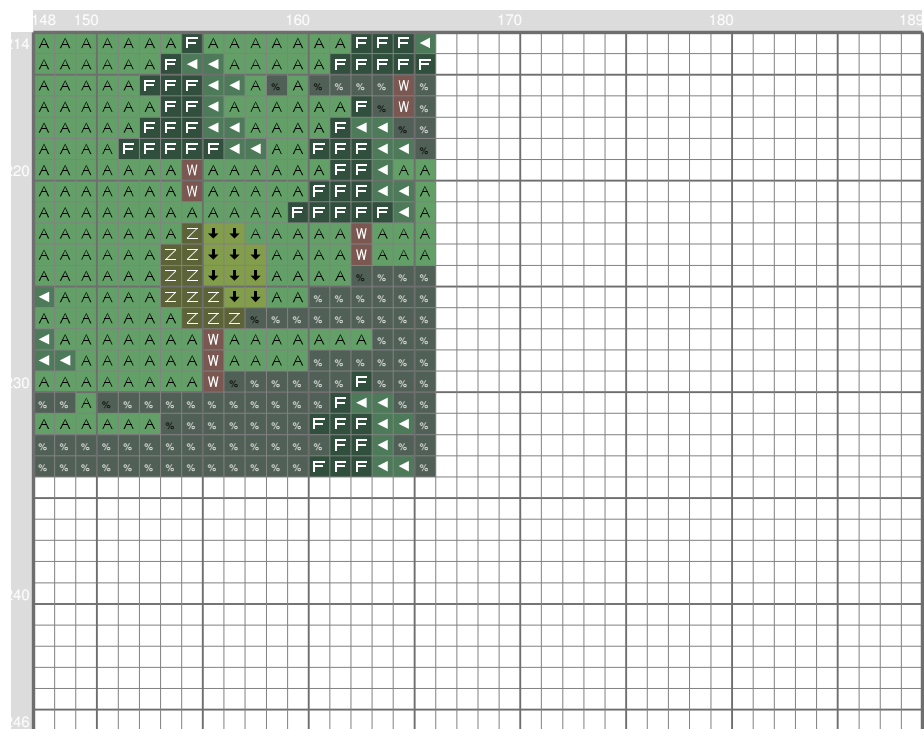


smaug



(This chart is printed using KG-Chart LE for Cross Stitch.)

smaug



(This chart is printed using KG-Chart LE for Cross Stitch.)

smaug

Stitch Count: 189w x 246h
 Finished Size: 53.34 cm x 69.42 cm (18 ct./inch)
 Cloth: Linen
 Cloth's Color: Black
 # of colors: 70 Colors

Color Table (DMC)

Cross Stitch				
	905	(19 ct)		646 (14 ct)
	666	(237 ct)		3033 (32 ct)
	746	(33 ct)		3829 (38 ct)
	740	(1 ct)		680 (102 ct)
	972	(1 ct)		434 (67 ct)
	937	(11 ct)		436 (45 ct)
	702	(13605 ct)		435 (51 ct)
	895	(1073 ct)		645 (9 ct)
	987	(9 ct)		730 (30 ct)
	469	(794 ct)		300 (36 ct)
	3345	(8 ct)		975 (73 ct)
	3750	(58 ct)		3862 (216 ct)
	3752	(2 ct)		744 (7 ct)
	304	(1 ct)		444 (4 ct)
	815	(254 ct)		742 (102 ct)
	3781	(1128 ct)		317 (1 ct)
	782	(122 ct)		739 (34 ct)
	420	(56 ct)		973 (263 ct)
	3820	(32 ct)		472 (1275 ct)
	839	(447 ct)		3845 (3 ct)
	3371	(148 ct)		B5200 (105 ct)
	930	(43 ct)		3827 (20 ct)
	931	(19 ct)		3856 (54 ct)
	3842	(1866 ct)		3857 (34 ct)
	3799	(449 ct)		902 (26 ct)
	838	(140 ct)		3045 (827 ct)
	470	(1097 ct)		500 (26 ct)
	310	(429 ct)		3828 (11 ct)
	890	(1 ct)		520 (3752 ct)
	3787	(418 ct)		501 (845 ct)
	3782	(764 ct)		3685 (47 ct)
	367	(639 ct)		3821 (11 ct)
	3362	(1 ct)		3046 (216 ct)
	934	(25 ct)		3023 (669 ct)
	822	(69 ct)		
	642	(25 ct)		