

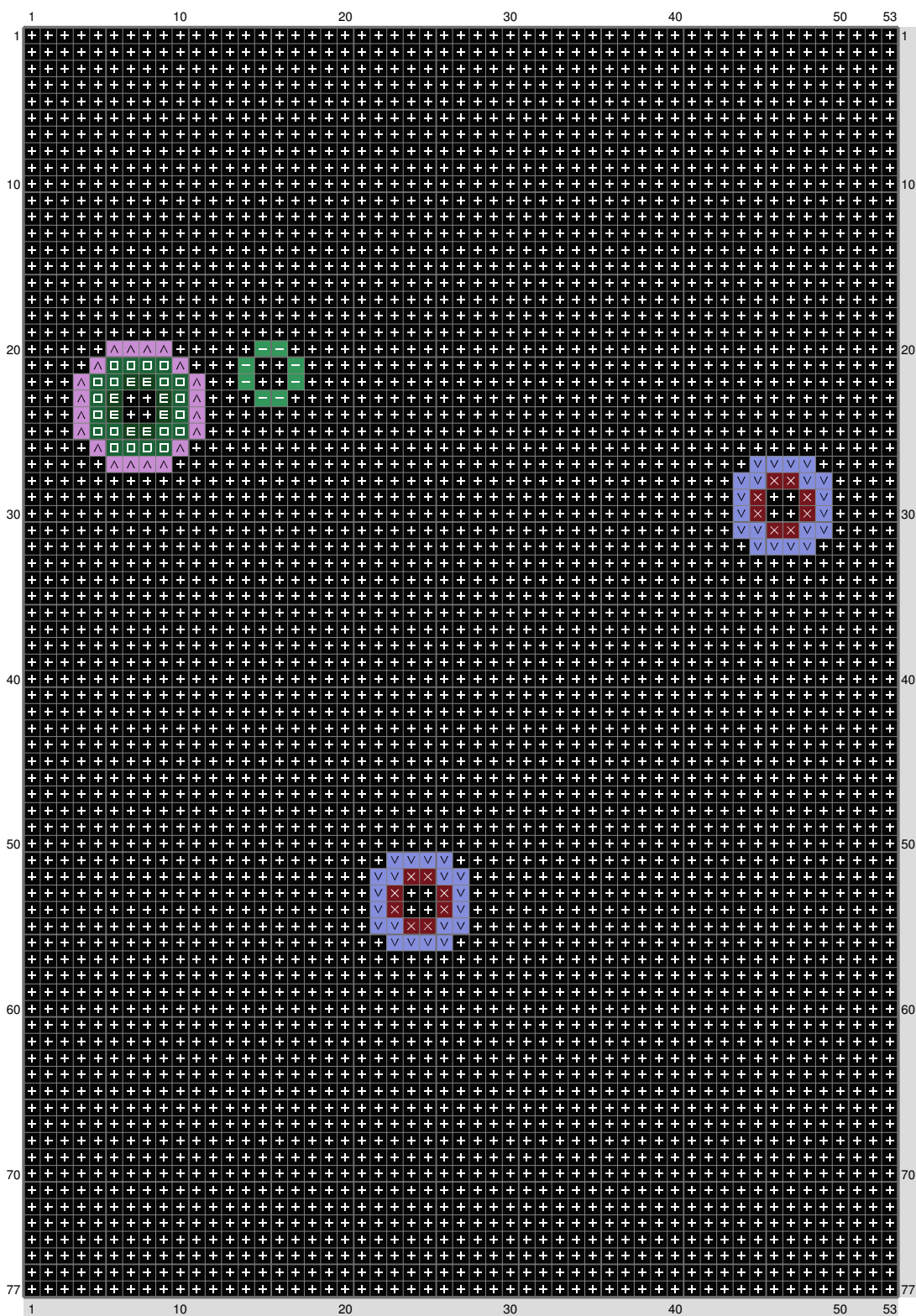
**BB**

Copyright (C) 2014 c



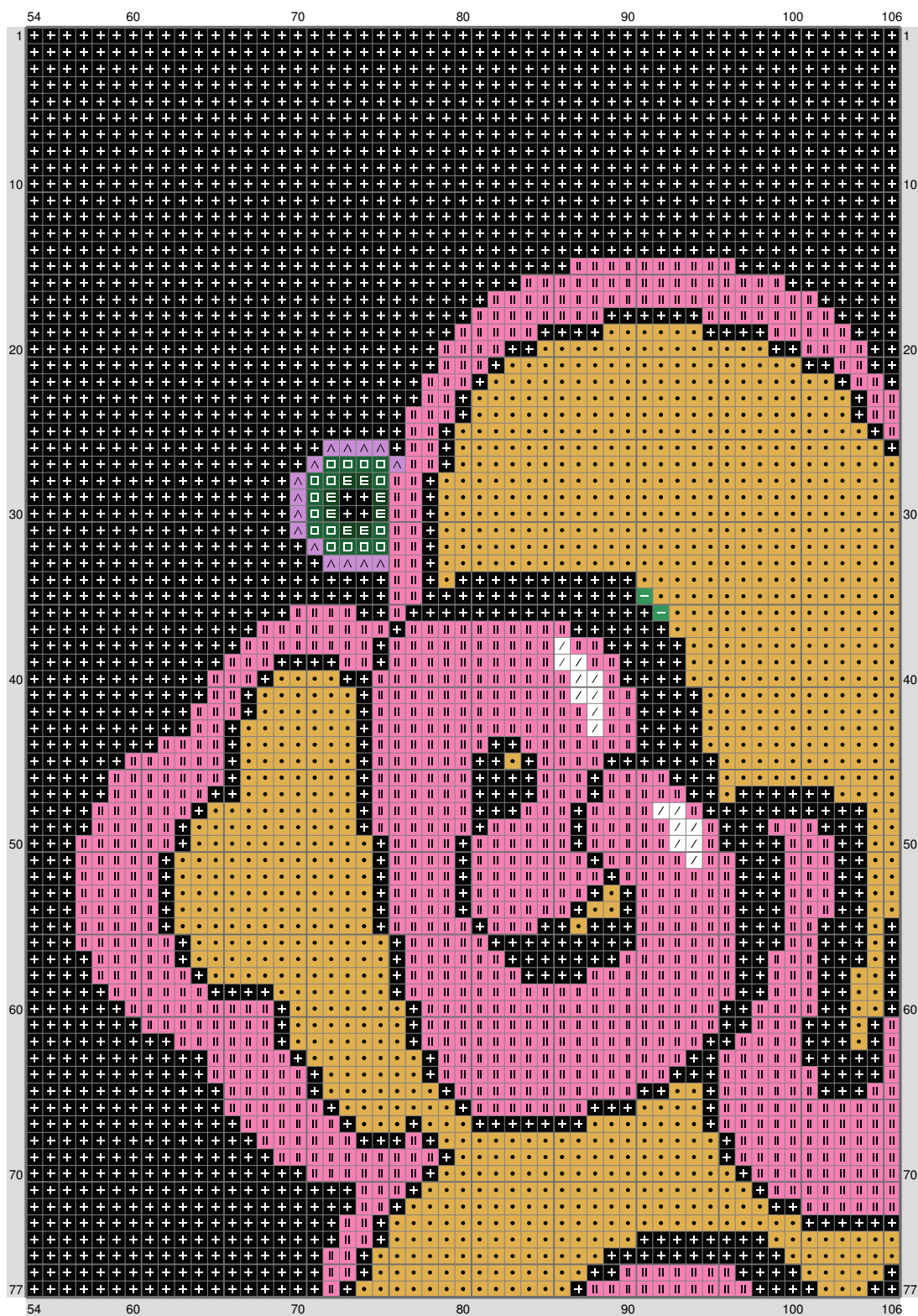
# BB

Copyright (C) 2014 c



# BB

Copyright (C) 2014 c

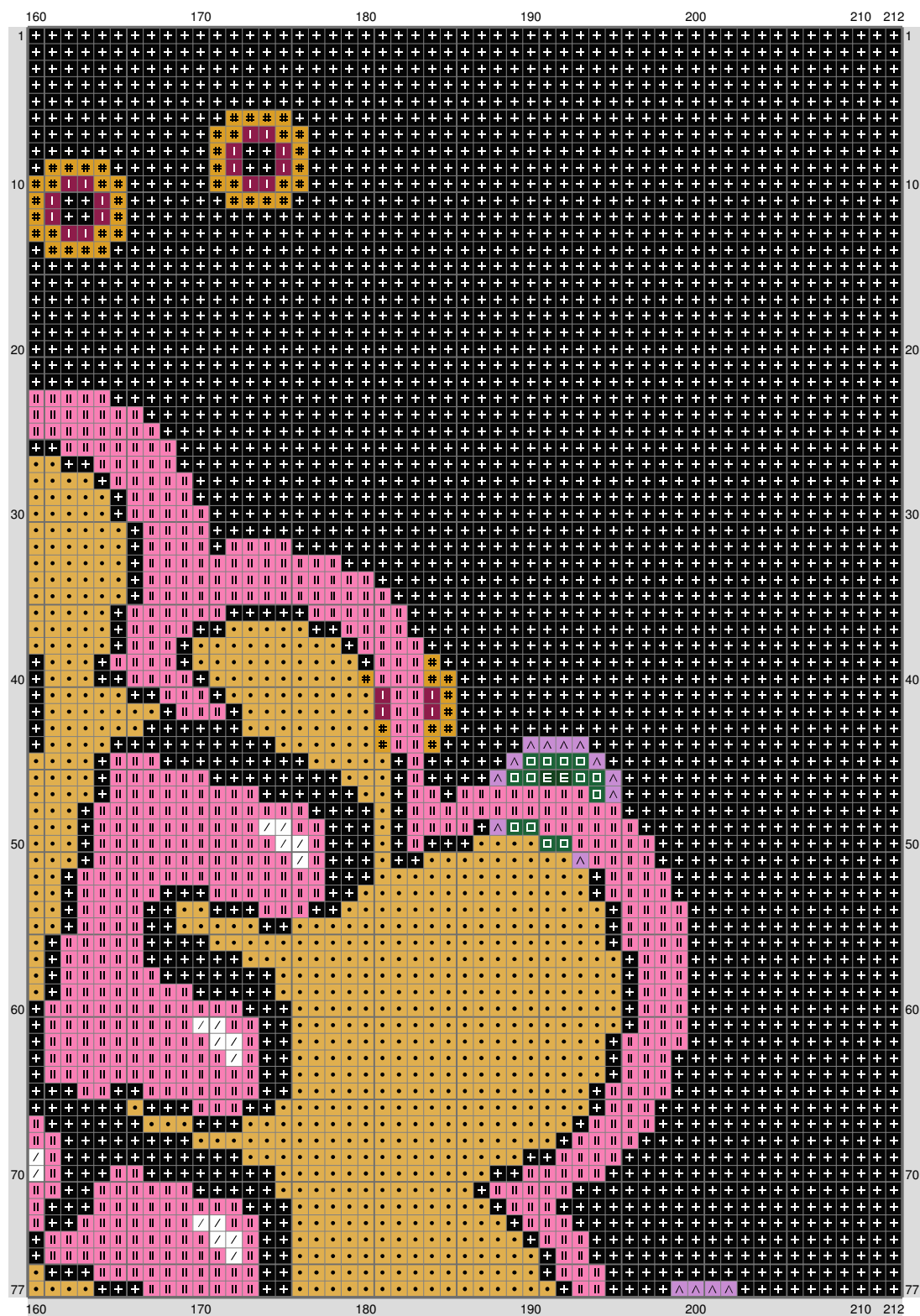


Copyright (C) 2014 c



# BB

Copyright (C) 2014 c



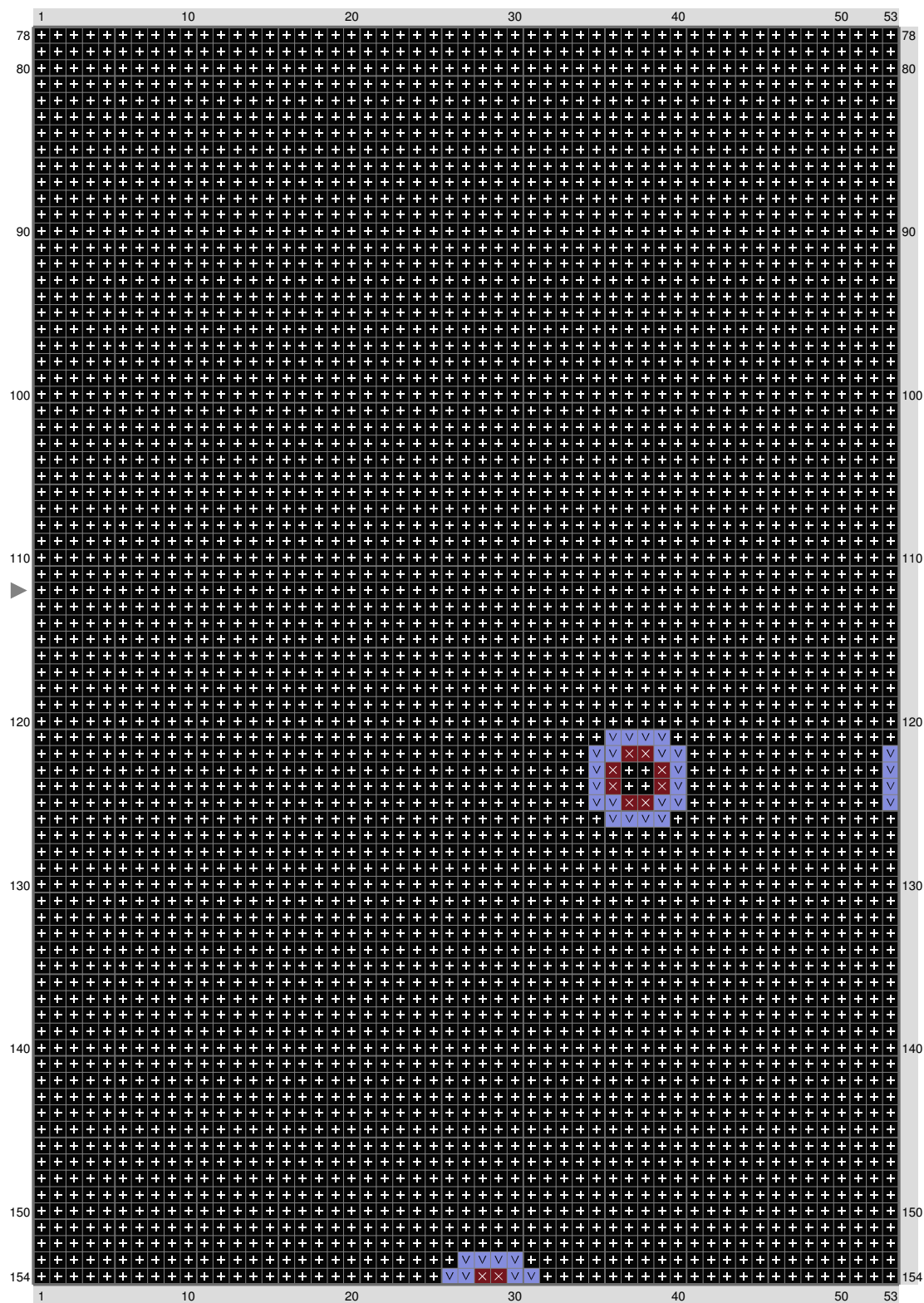
## BB

Copyright (C) 2014 c

[illegible]

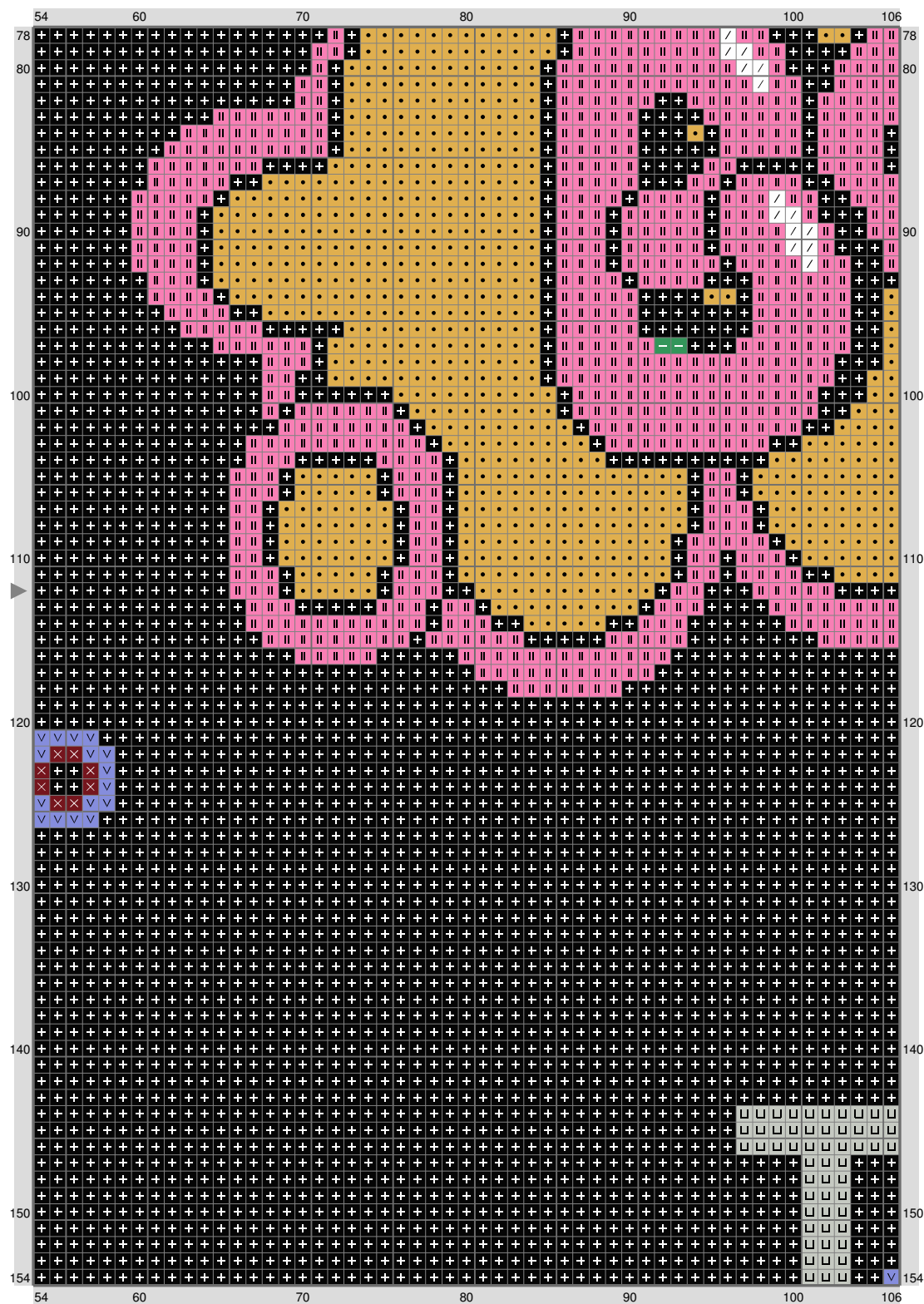
## BB

Copyright (C) 2014 c



# BB

Copyright (C) 2014 c

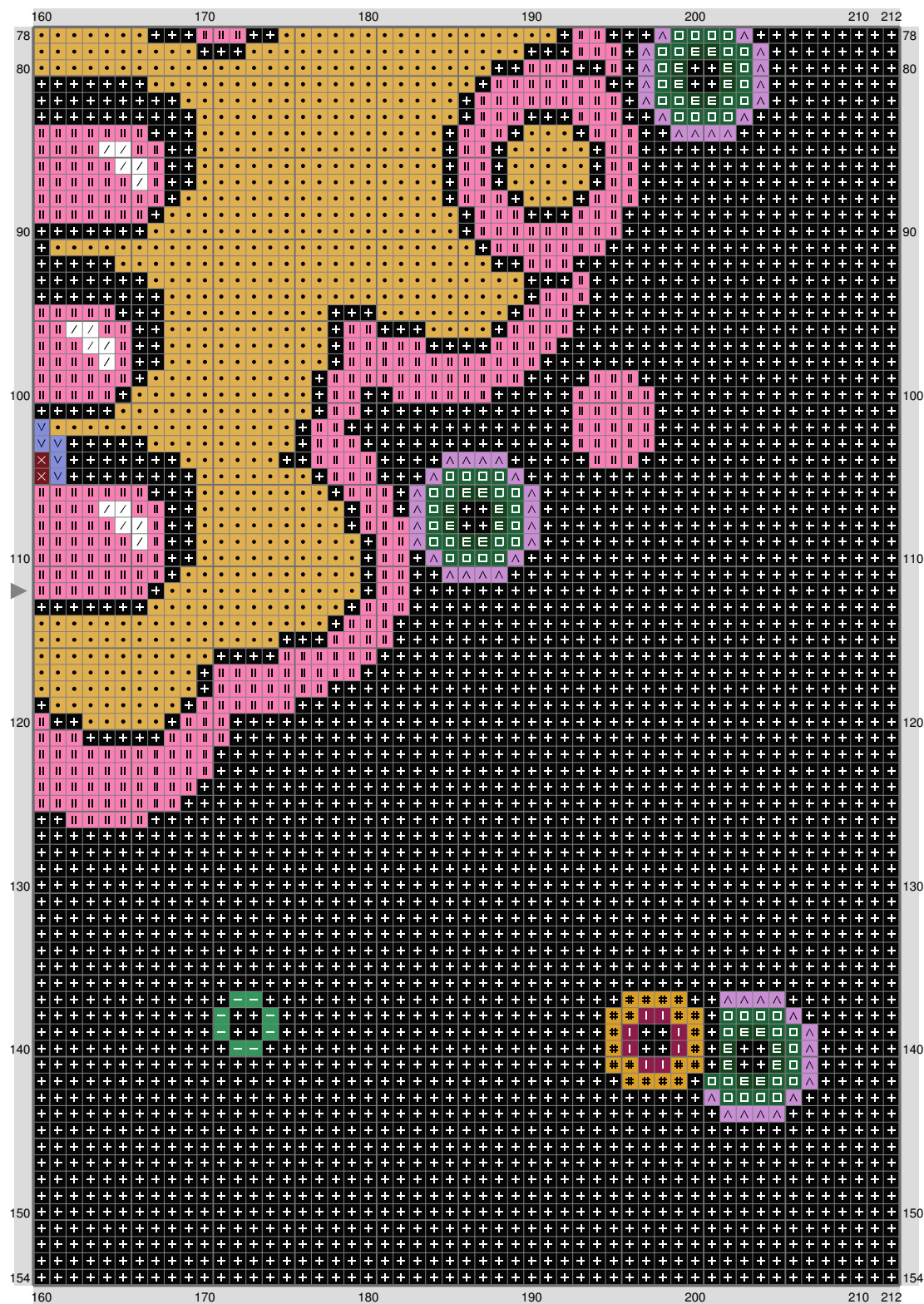






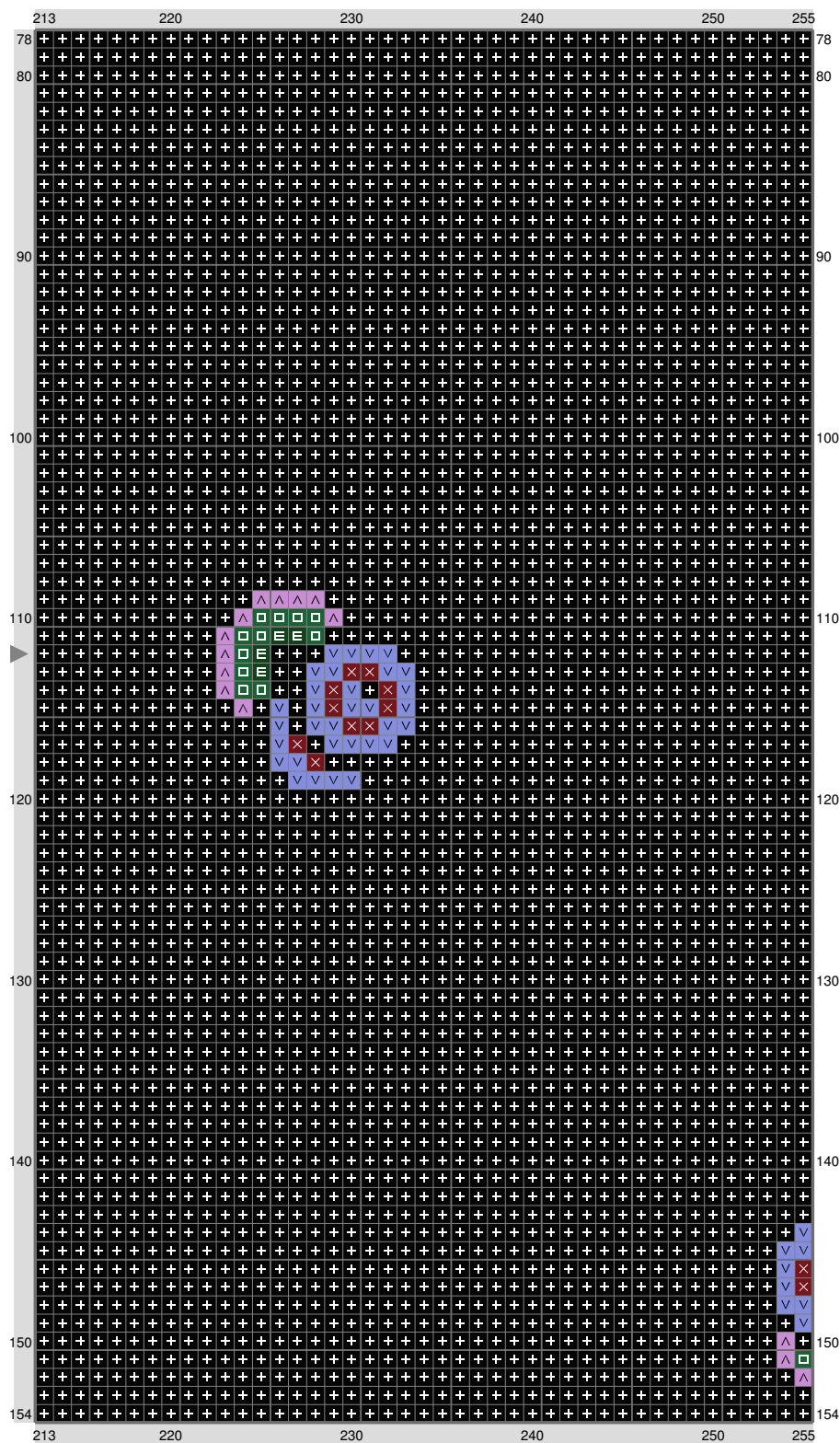
# BB

Copyright (C) 2014 c



# BB

Copyright (C) 2014 c



Copyright (C) 2014 c

12 / 17

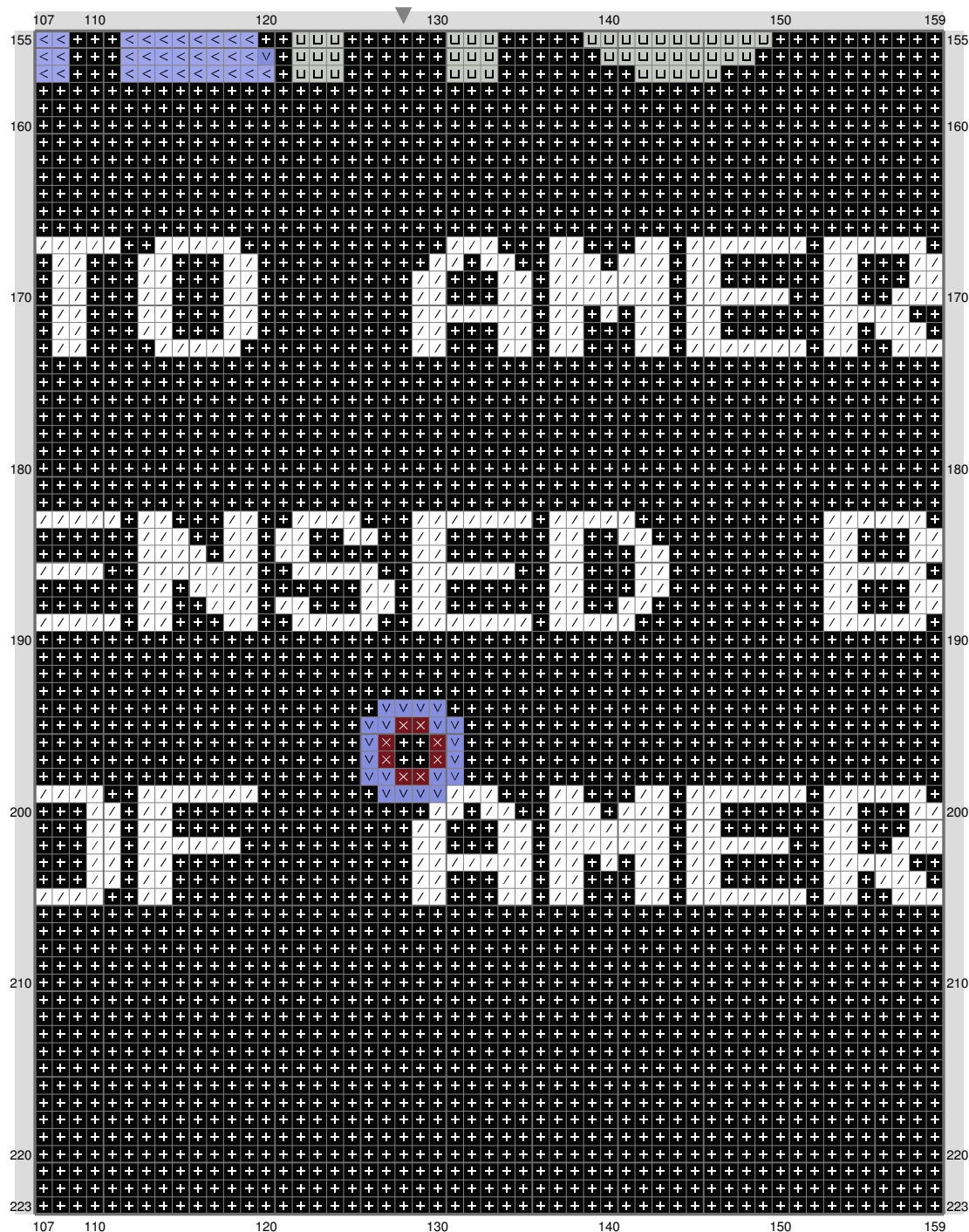
# BB

Copyright (C) 2014 c



# BB

Copyright (C) 2014 c



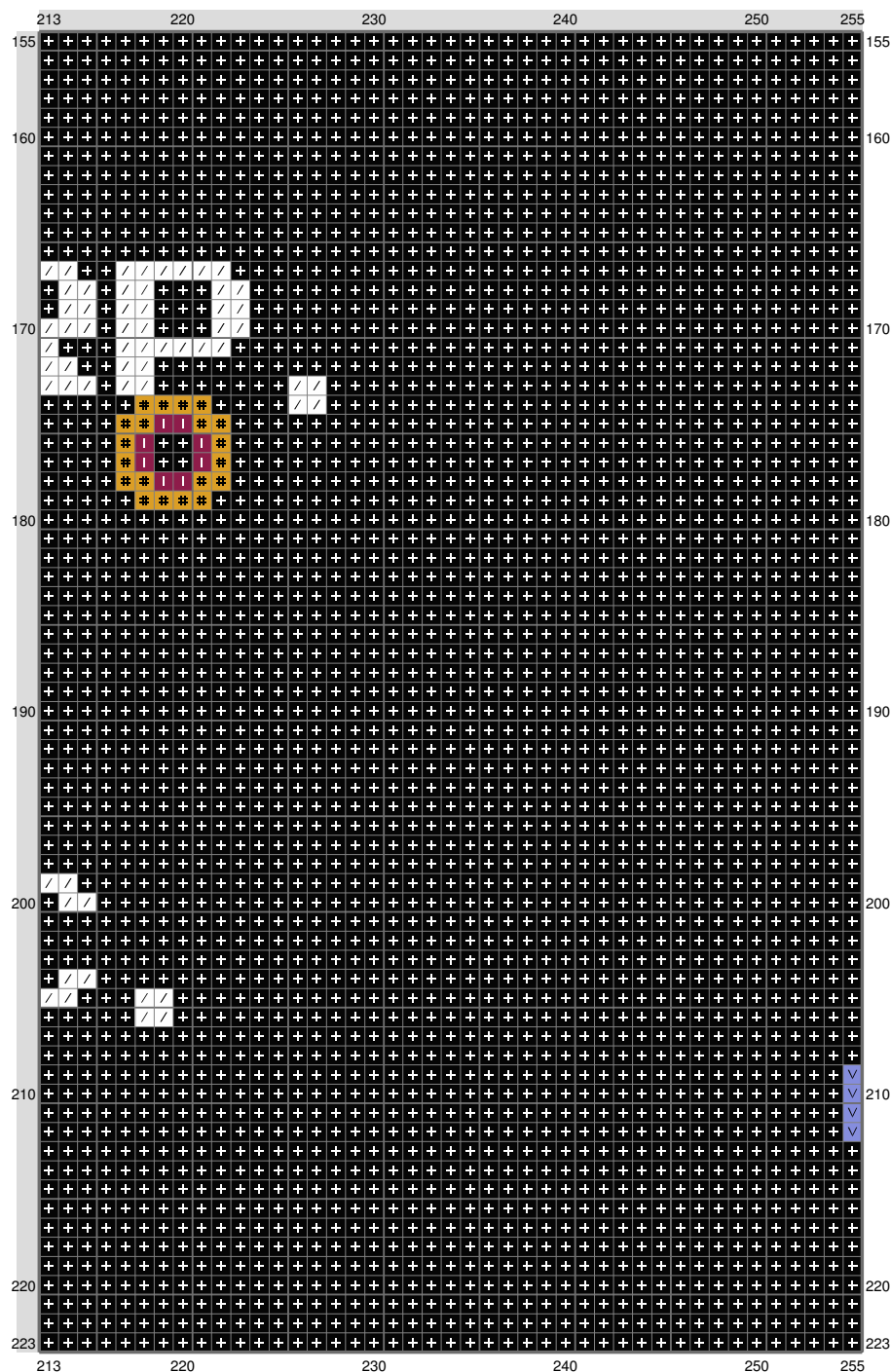
# BB

Copyright (C) 2014 c



# BB

Copyright (C) 2014 c





## **BB**

Copyright (C) 2014 c

Stitch Count: 255w x 223h

Finished Size: 71.96 cm x 62.93 cm (18 ct./inch)















Cloth: Aida

Cloth's Color: White

# of colors: 14 Colors

### Color Table (DMC)

#### **Cross Stitch**

	310	(44649 ct)
	890	(63 ct)
	909	(168 ct)
	701	(63 ct)
	815	(79 ct)
	3685	(56 ct)
	3852	(145 ct)
	3820	(4288 ct)
	3839	(234 ct)
	209	(166 ct)
	3806	(4974 ct)
	156	(131 ct)
	3023	(284 ct)
	B5200	(1565 ct)