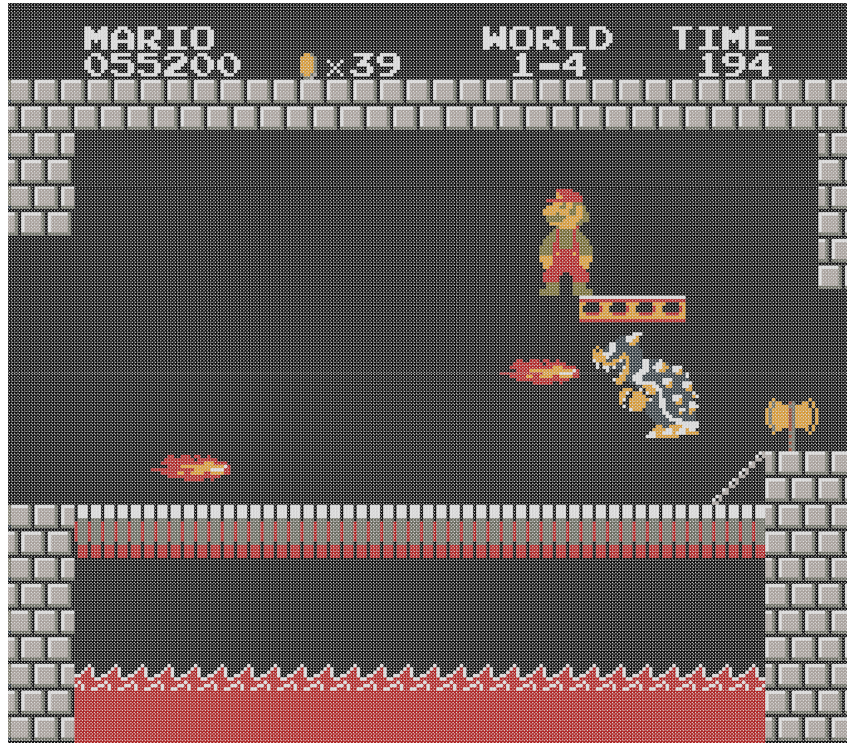


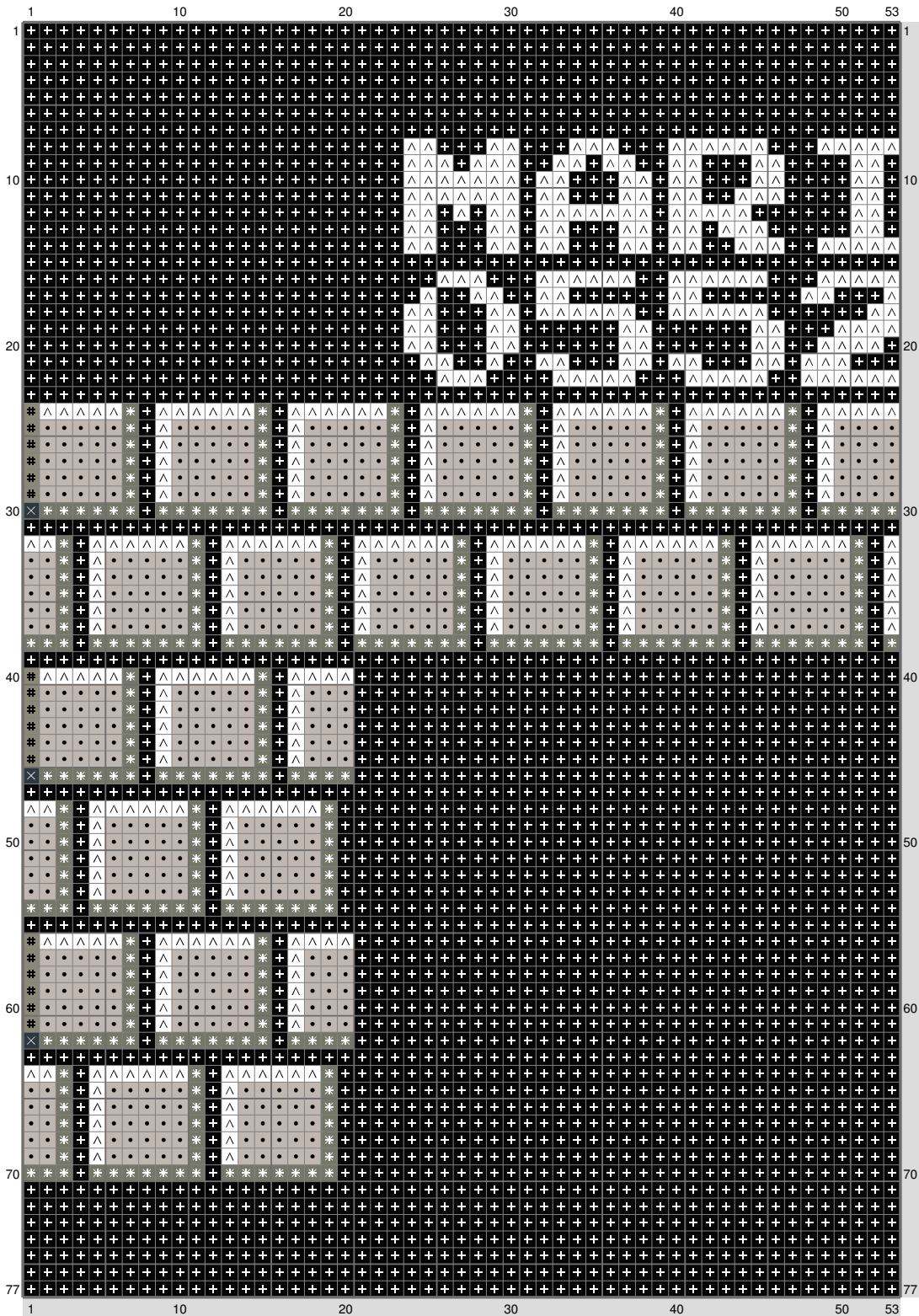
smb boos

Copyright (C) 2014 c



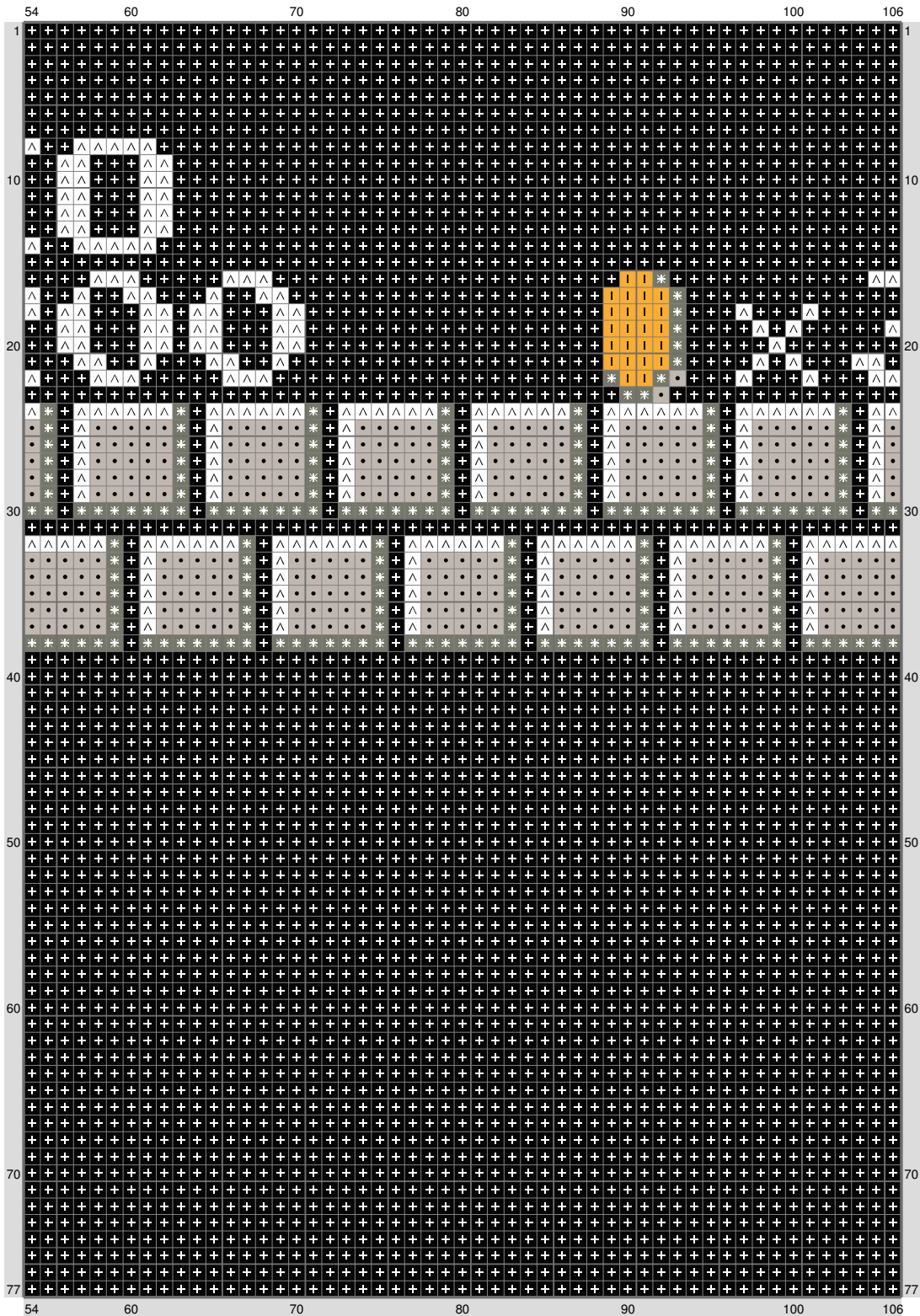
smb boos

Copyright (C) 2014 c



smb boos

Copyright (C) 2014 c



Copyright (C) 2014 c



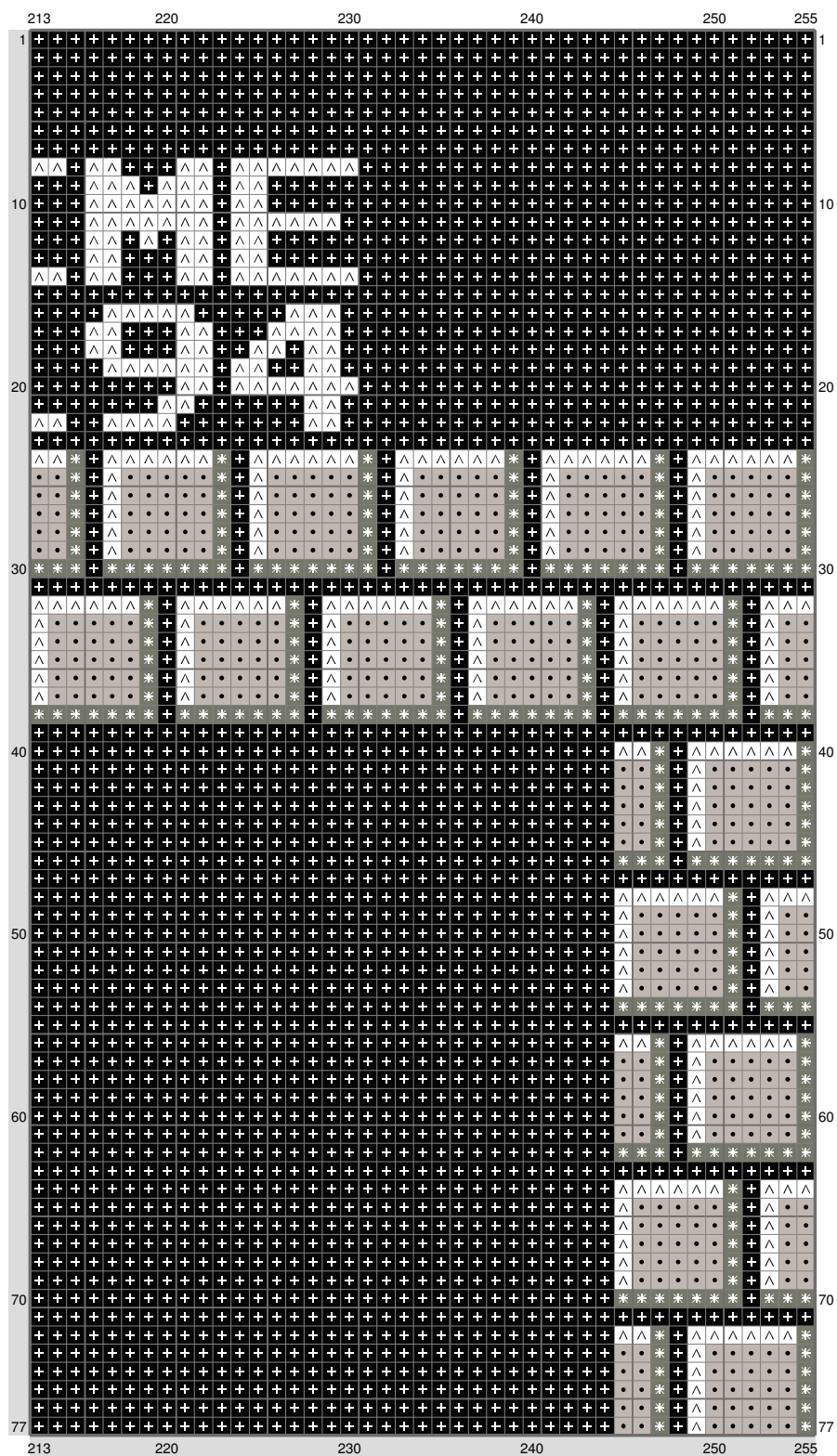
smb boos

Copyright (C) 2014 c



smb boos

Copyright (C) 2014 c

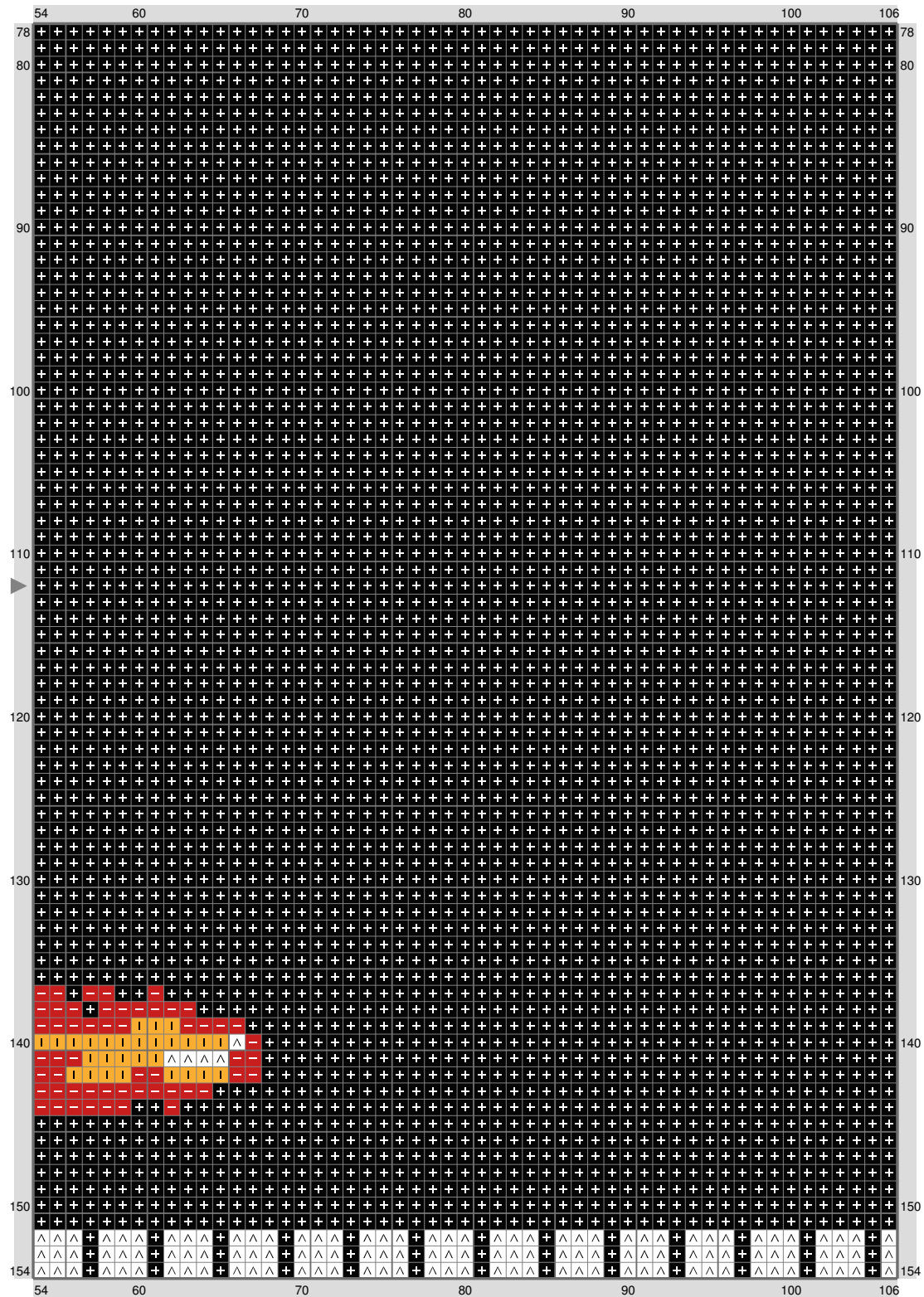


Copyright (C) 2014 c



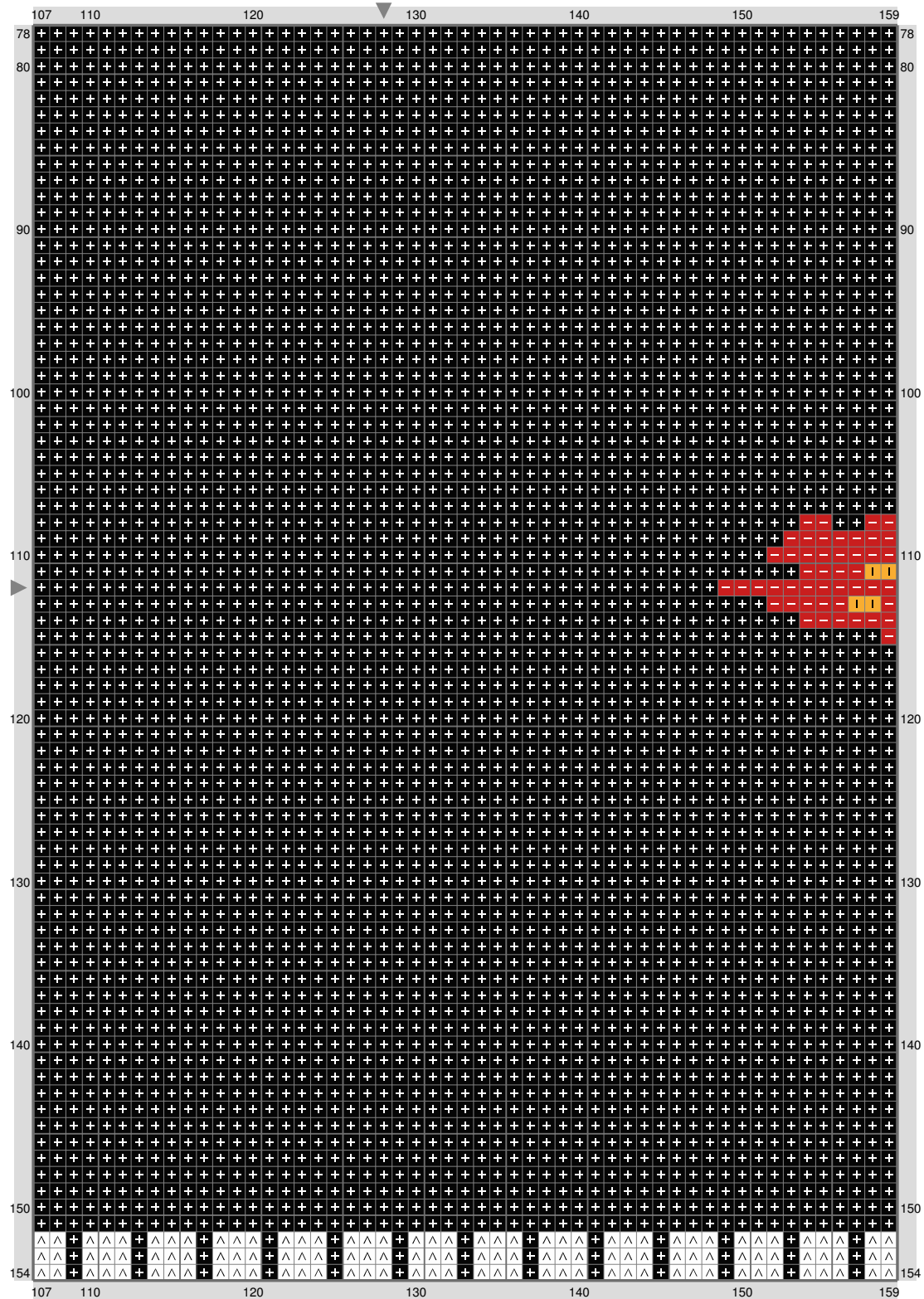
smb boos

Copyright (C) 2014 c



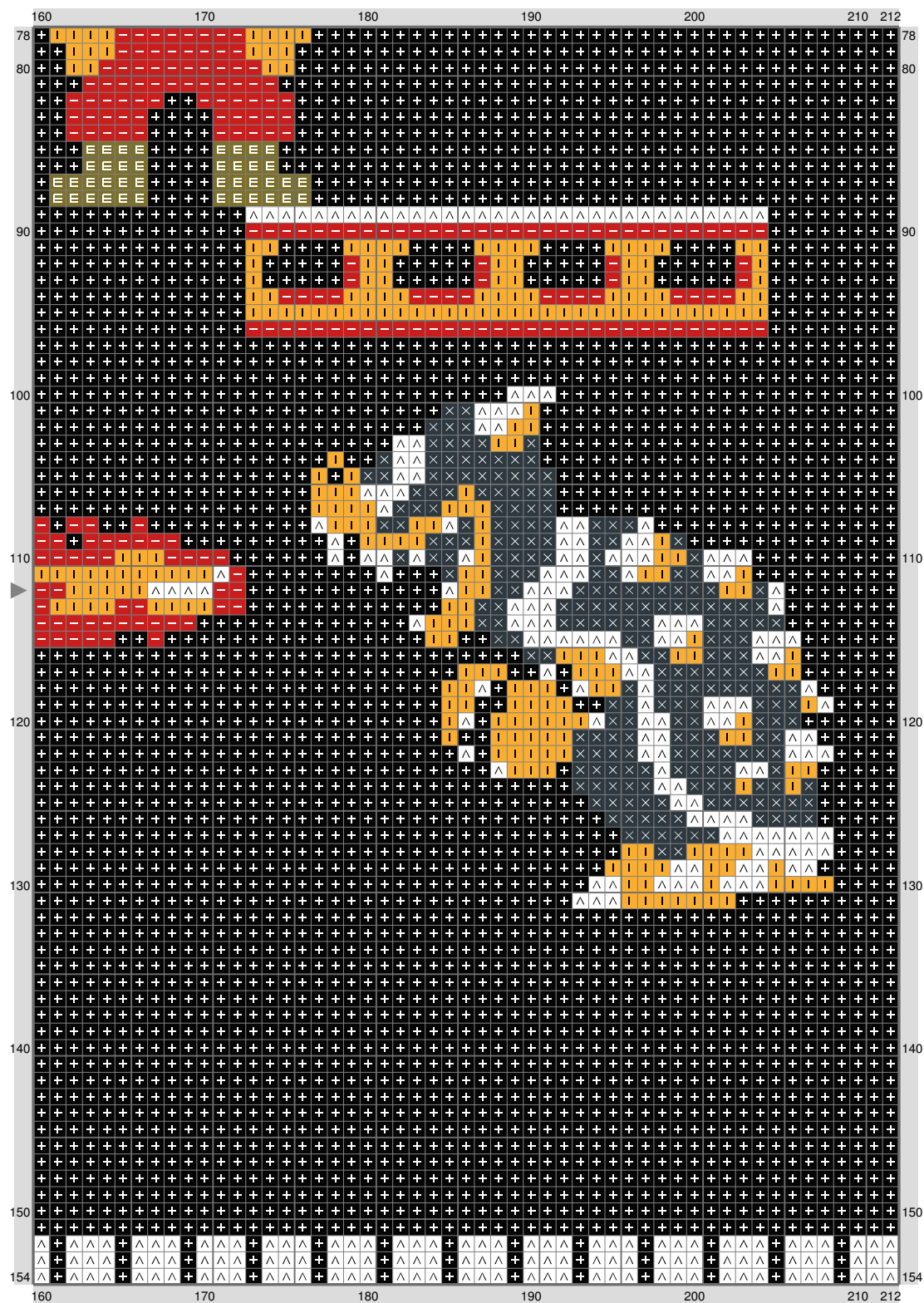
smb boos

Copyright (C) 2014 c



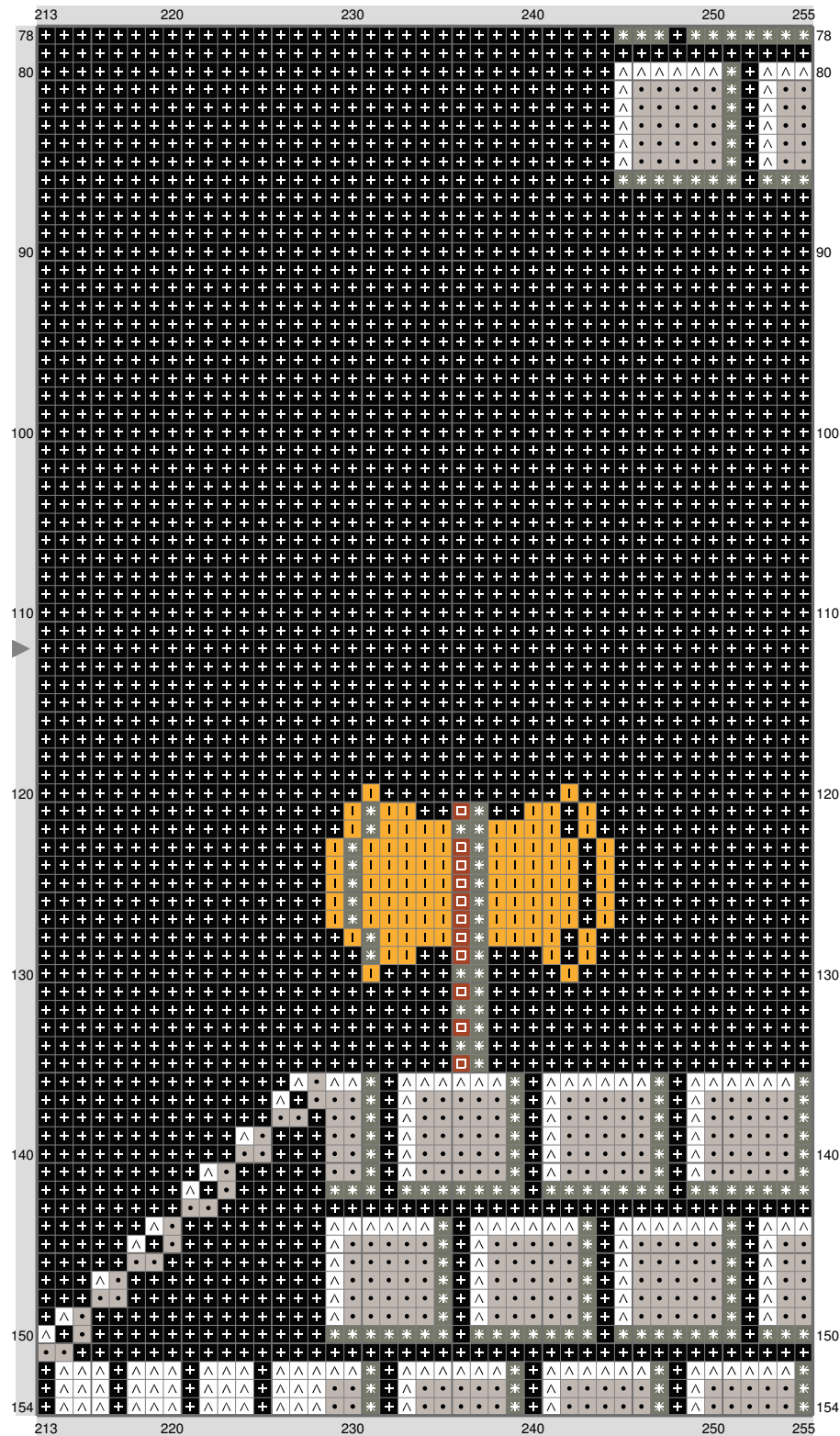
smb boos

Copyright (C) 2014 c



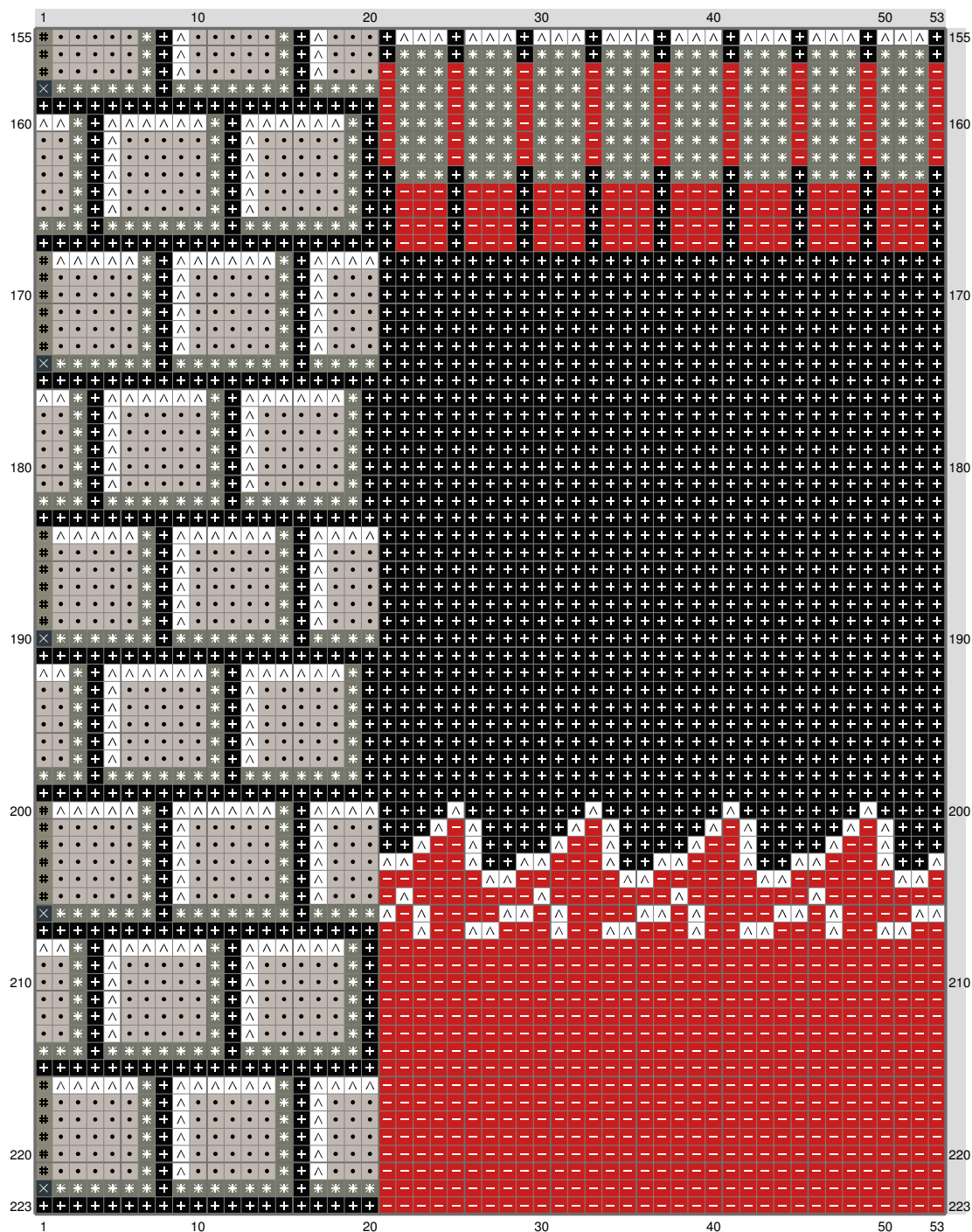
smb boos

Copyright (C) 2014 c



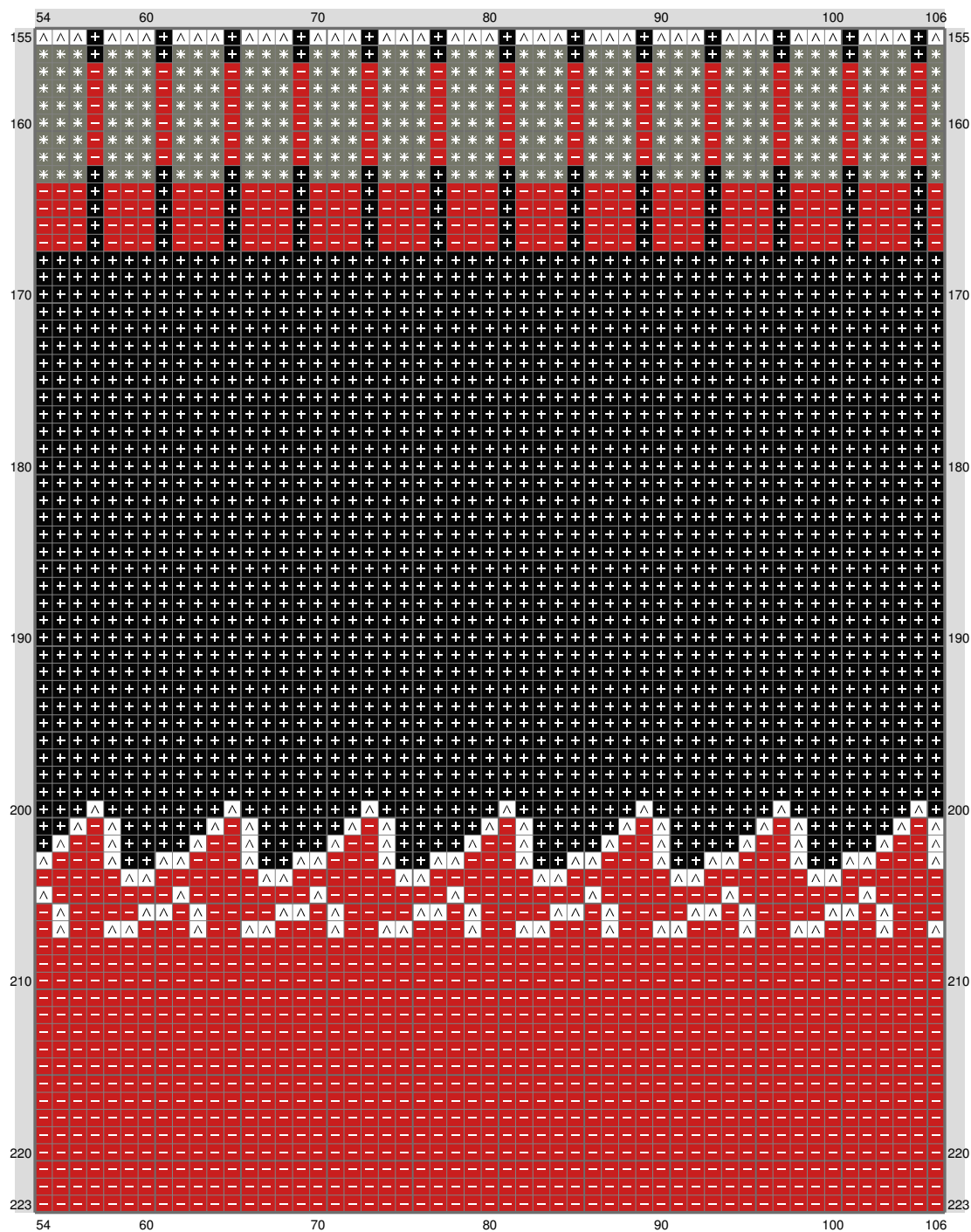
smb boos

Copyright (C) 2014 c



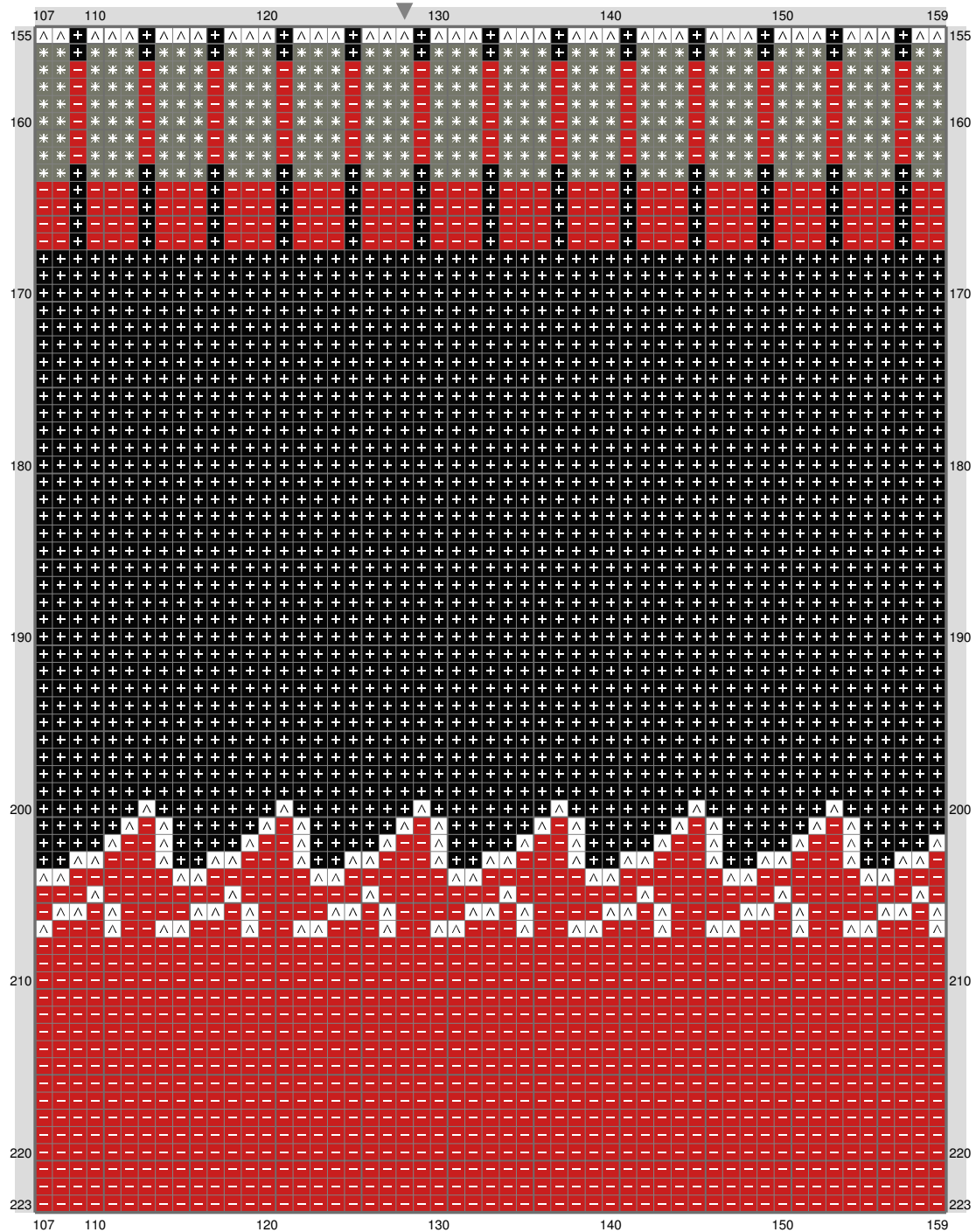
smb boos

Copyright (C) 2014 c



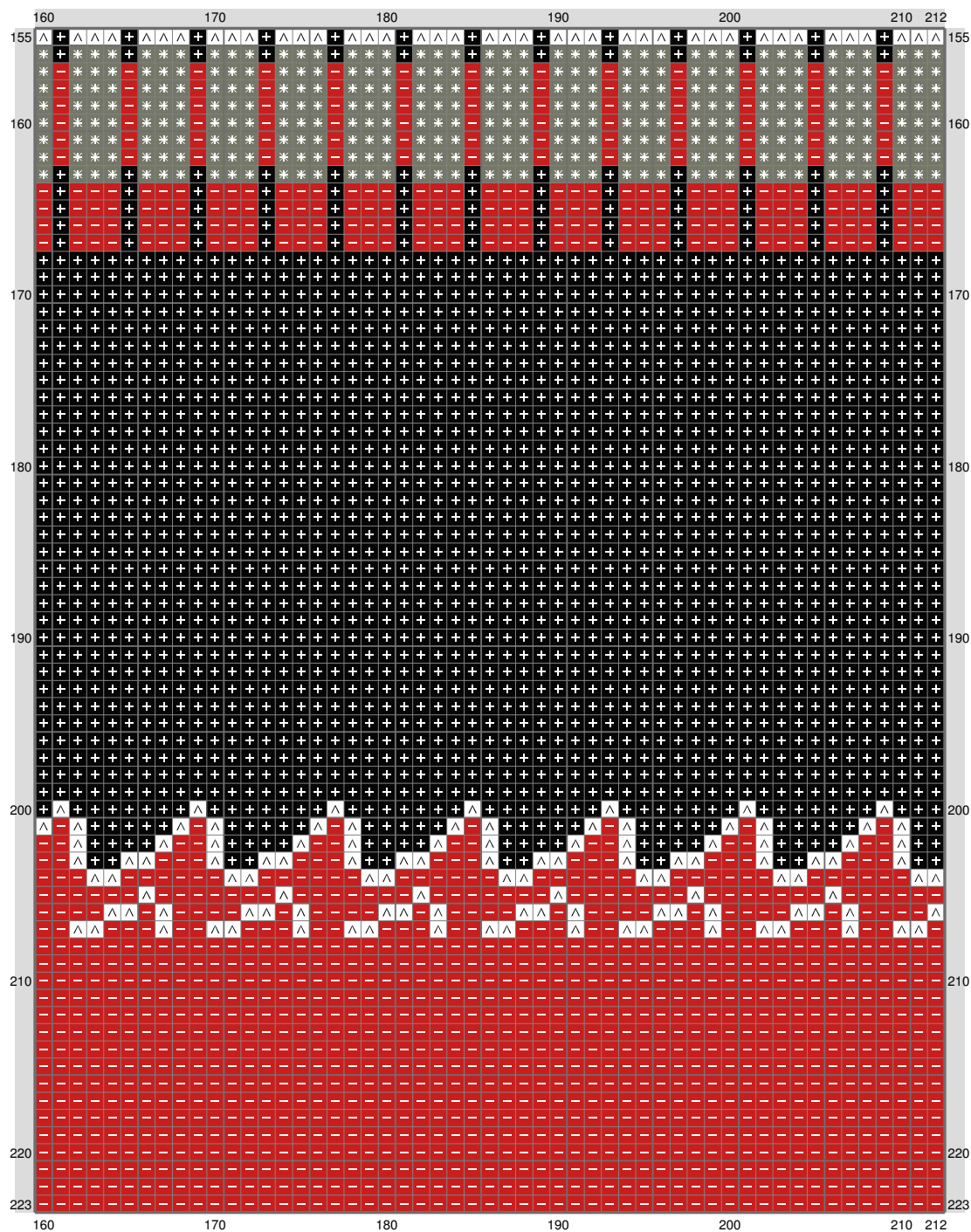
smb boos

Copyright (C) 2014 c



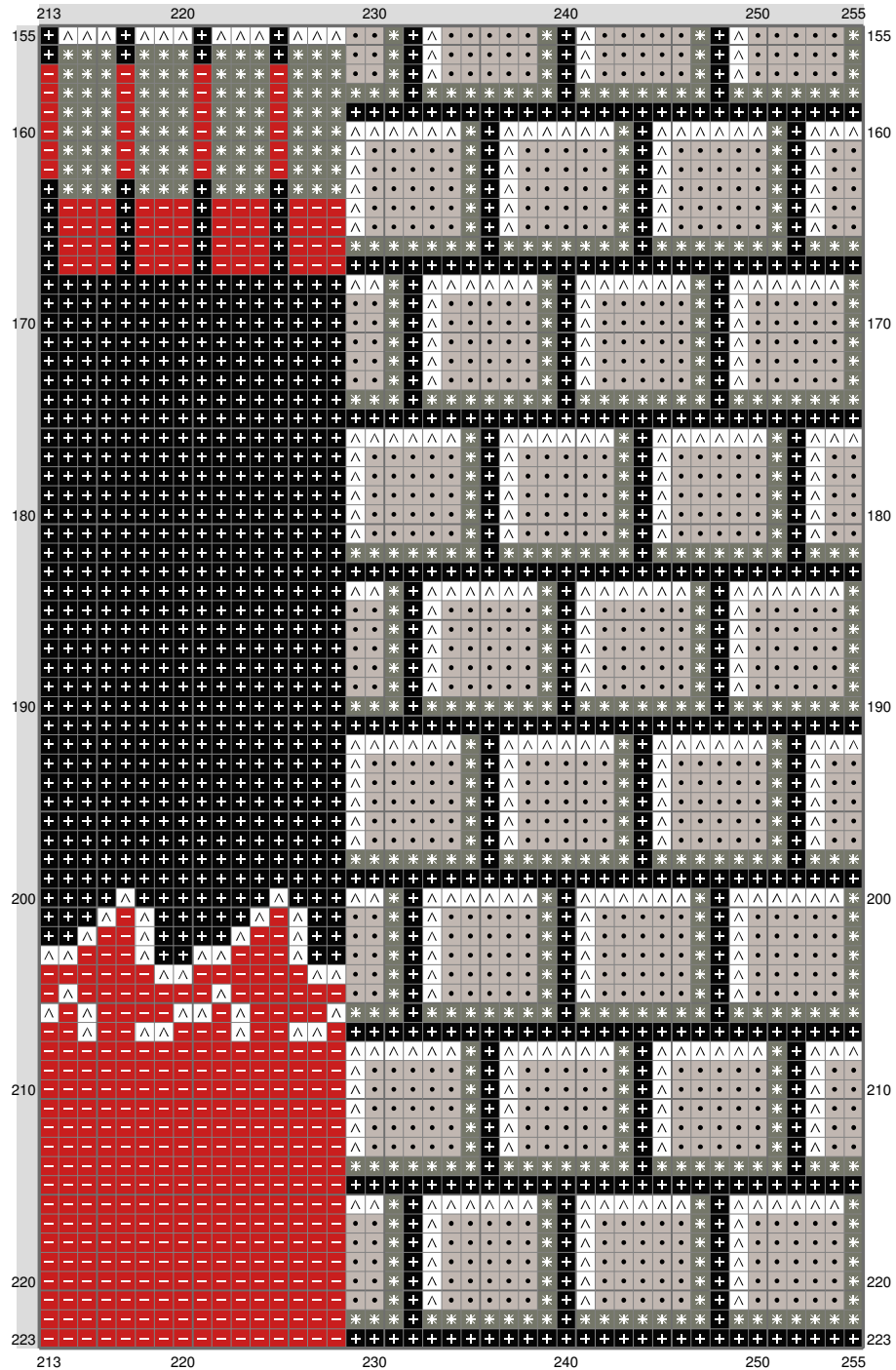
smb boos

Copyright (C) 2014 c



smb boos

Copyright (C) 2014 c



smb boos

Copyright (C) 2014 c

Stitch Count: 255w x 223h

Finished Size: 71.96 cm x 62.93 cm (18 ct./inch)











Cloth: Aida

Cloth's Color: White

of colors: 10 Colors

Color Table (DMC)

Cross Stitch

	310	(40236 ct)
	730	(149 ct)
	918	(11 ct)
	817	(5431 ct)
	500	(244 ct)
	3787	(3141 ct)
	742	(480 ct)
	640	(48 ct)
	647	(3579 ct)
	B5200	(3546 ct)