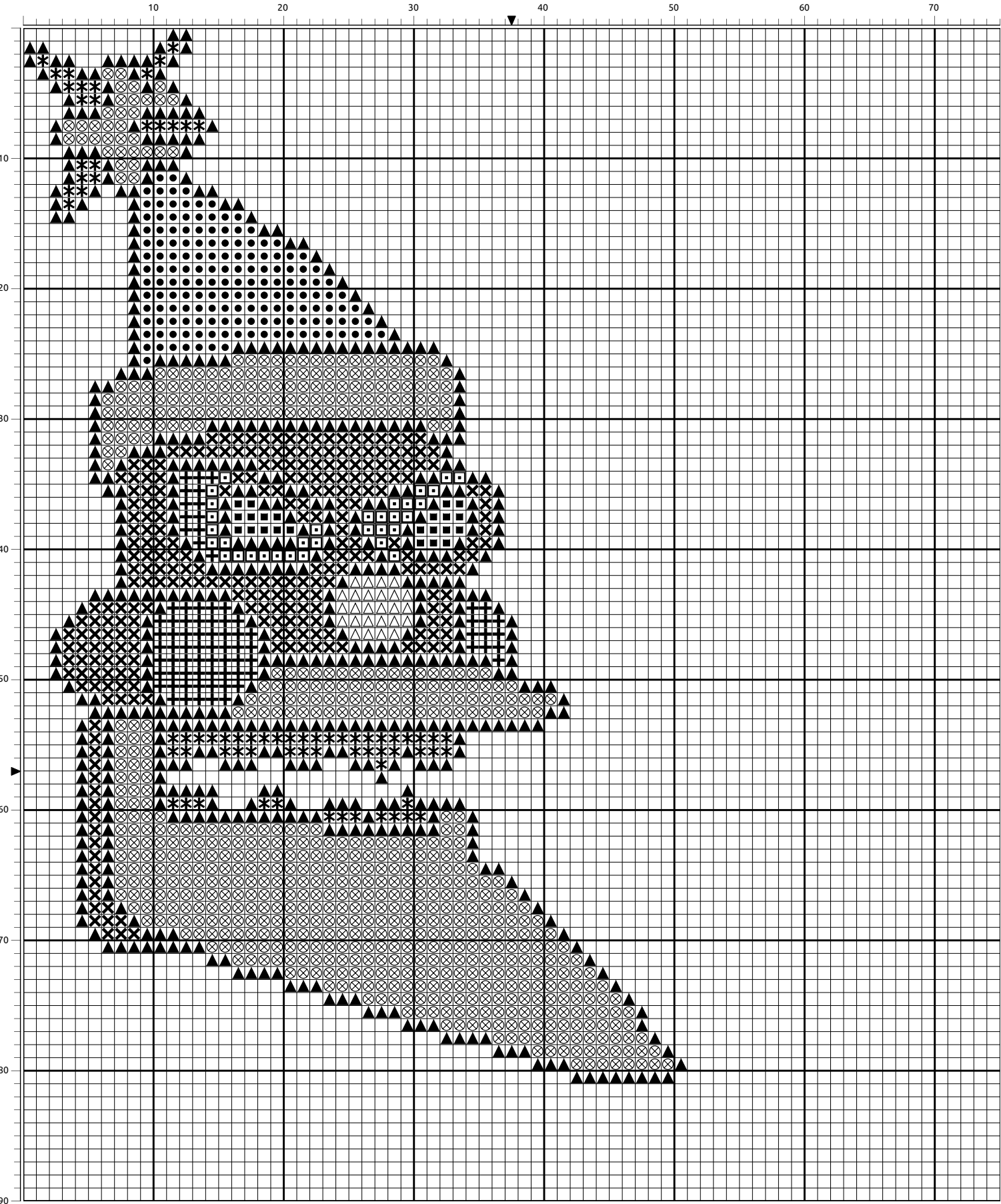
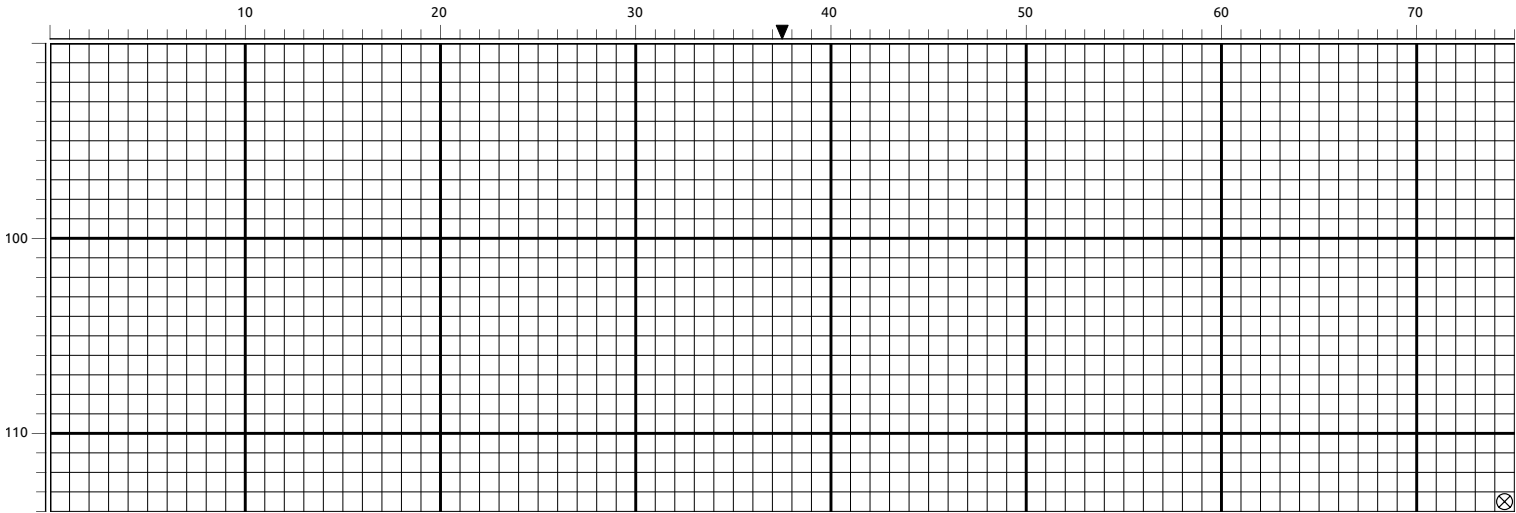




Created by RHStitch (BigDaddyWiz) (C) Pattern Size: 75 x 114 Flosses from the DMC range.





## DMC Flosses

Symbol	Name	Strands	Description	Stitches	Length(m)	Skeins (8m)
+	156	2 / 2	Blue Violet Med Lt	81	1.1	1 (0.02)
×	157	2 / 2	Cornflower Blue Vy Lt	263	3.58	1 (0.07)
◻	161	2 / 2	Blue Gray	33	0.45	1 (0.01)
▲	310	2 / 2	Black	561	7.64	1 (0.16)
●	321	2 / 2	Red	160	2.18	1 (0.05)
*	726	2 / 2	Topaz Light	74	1.01	1 (0.02)
△	915	2 / 2	Plum Dark	26	0.35	1 (0.01)
■	946	2 / 2	Burnt Orange Med	23	0.31	1 (0.01)
⊗	Blanc	2 / 2	White	719	9.8	1 (0.2)