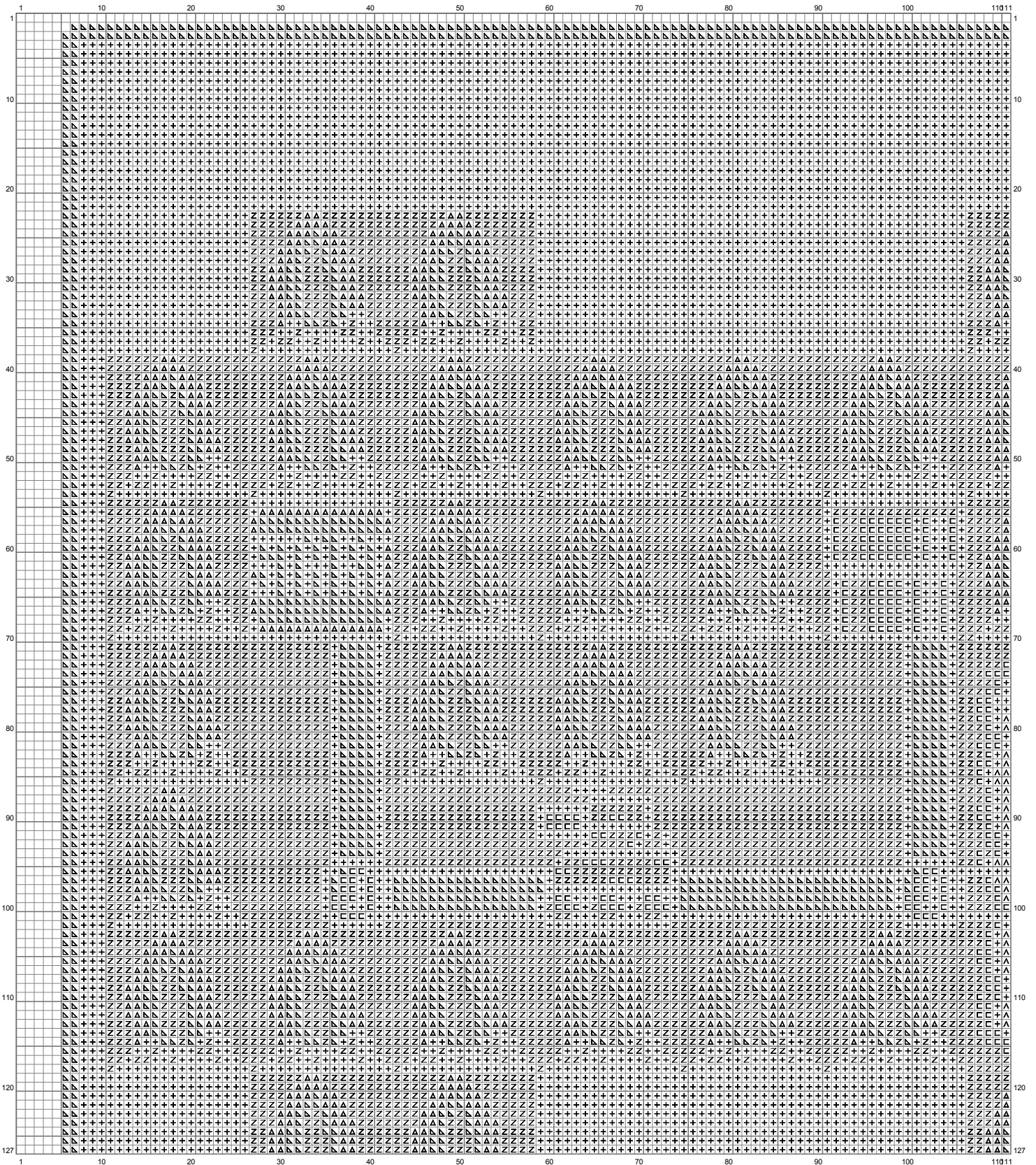
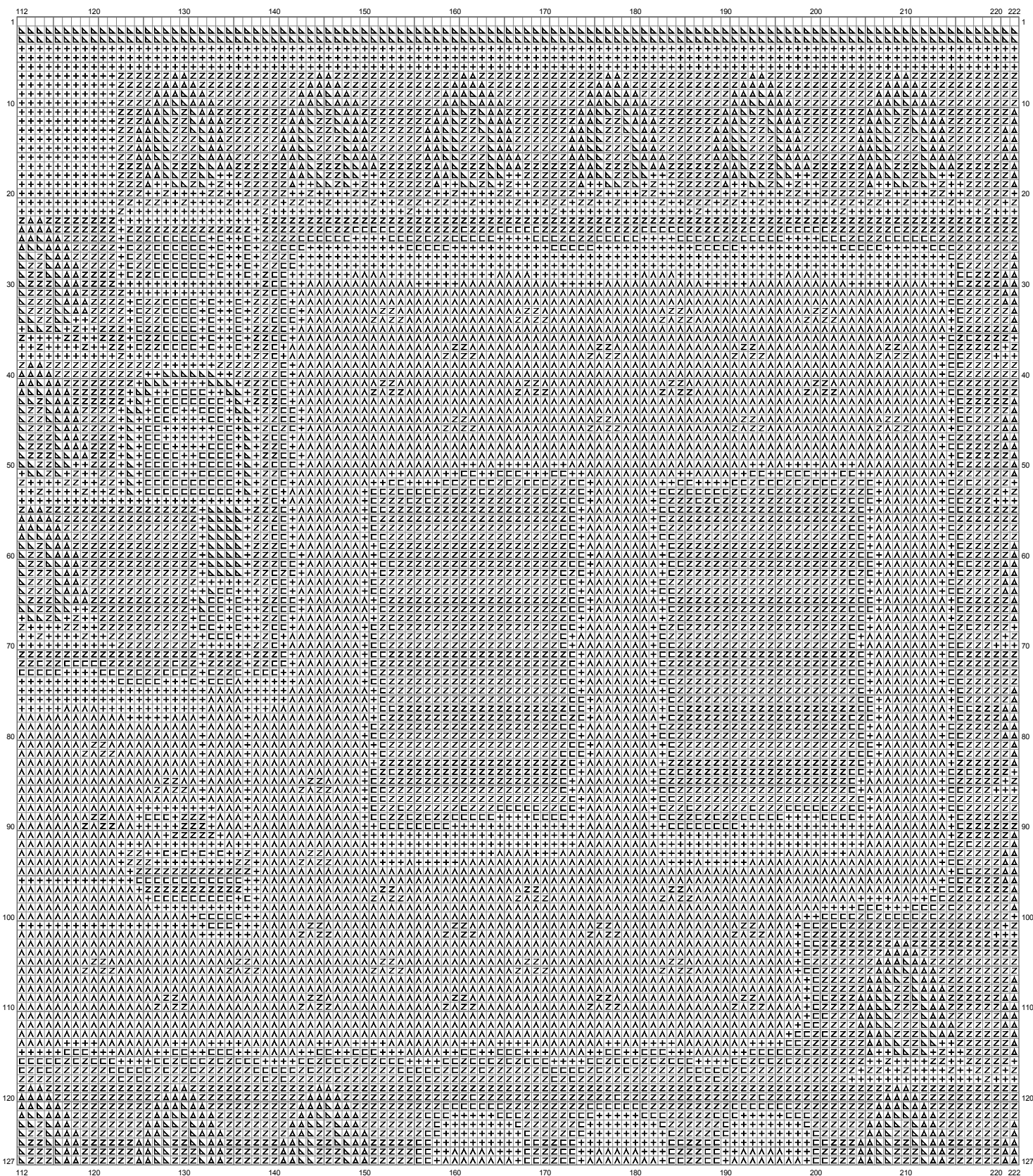


Untitled

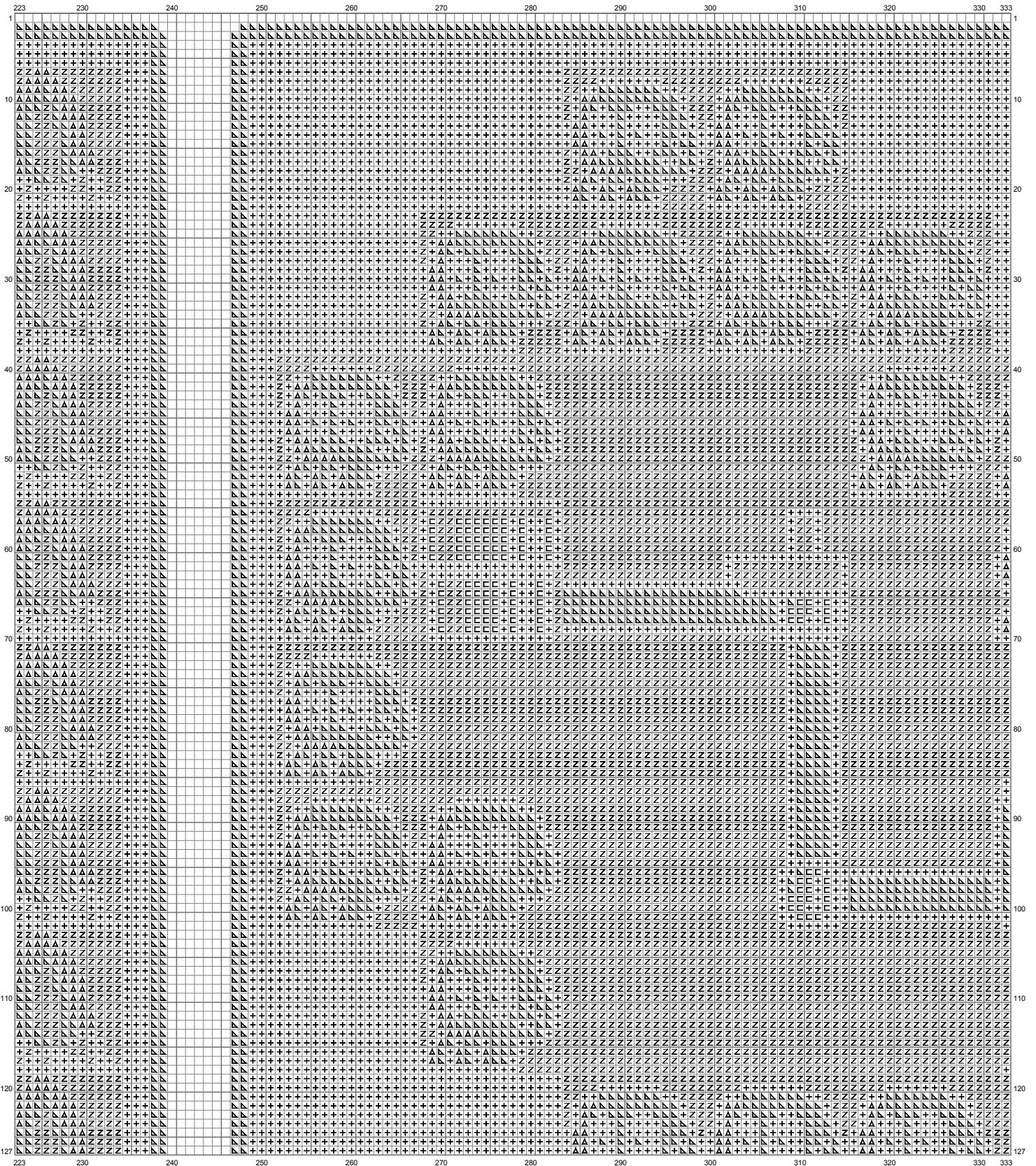


(This chart is printed using KG-Chart LE for Cross Stitch.)

Untitled

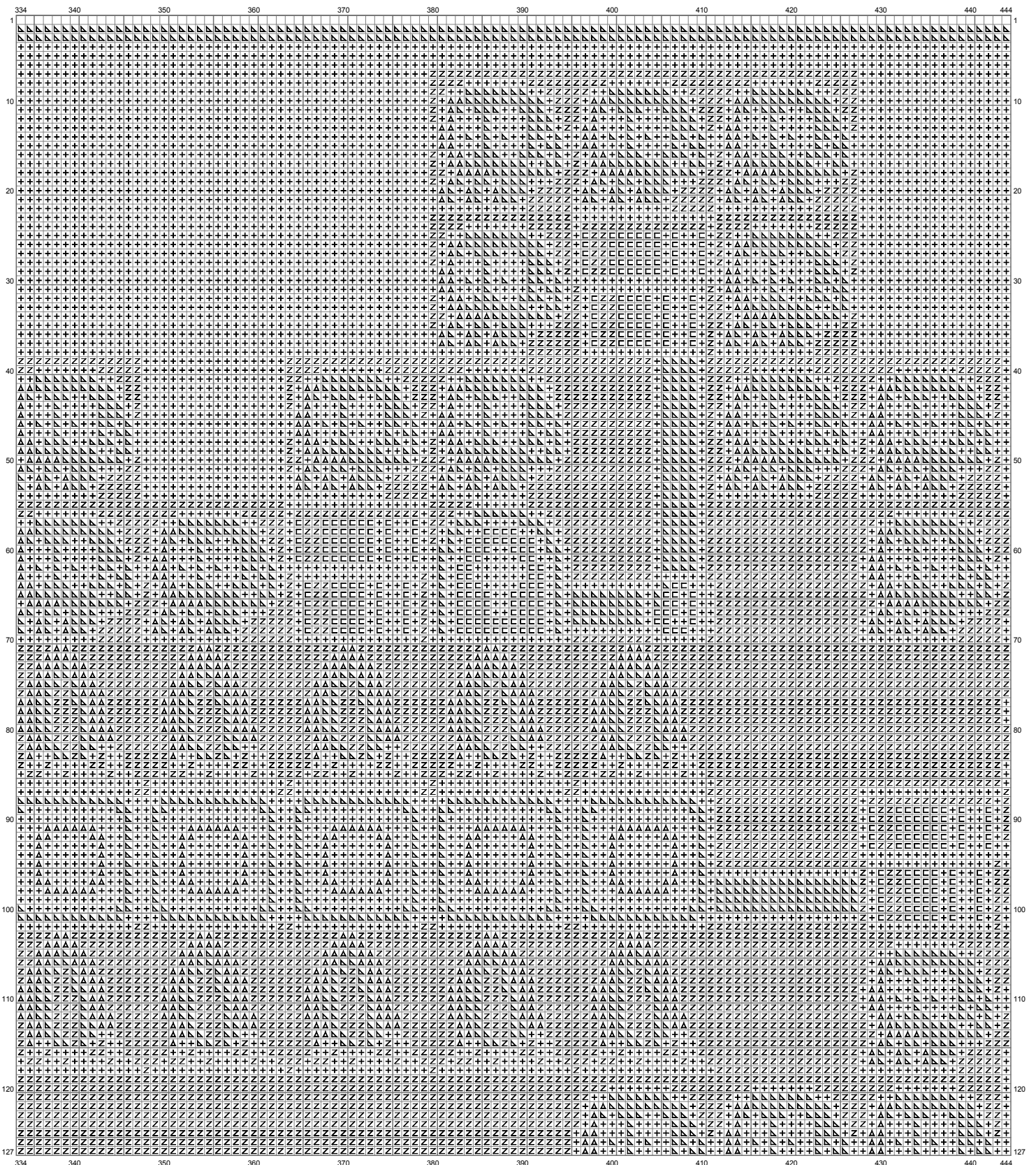


Untitled



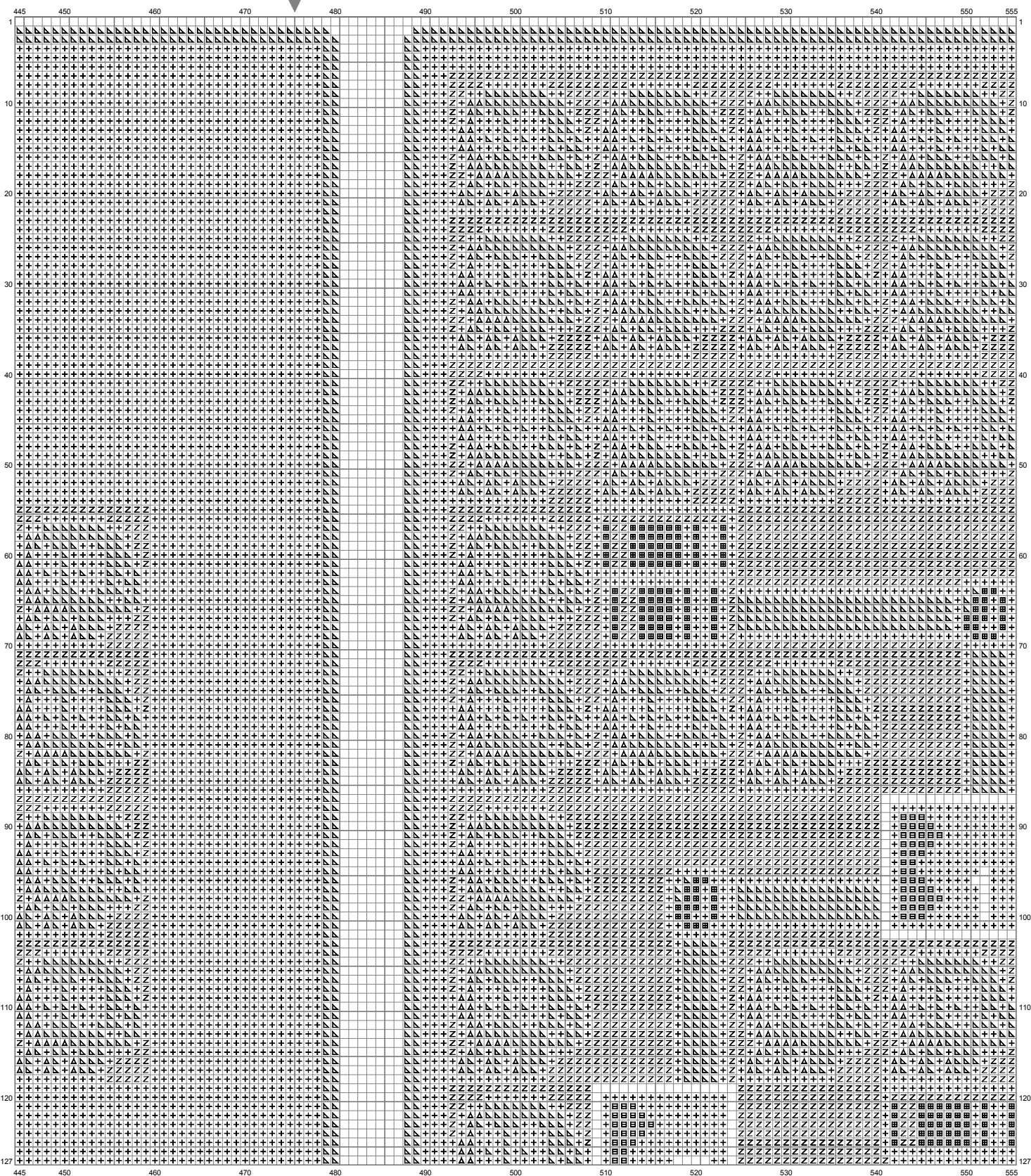
(This chart is printed using KG-Chart LE for Cross Stitch.)

Untitled



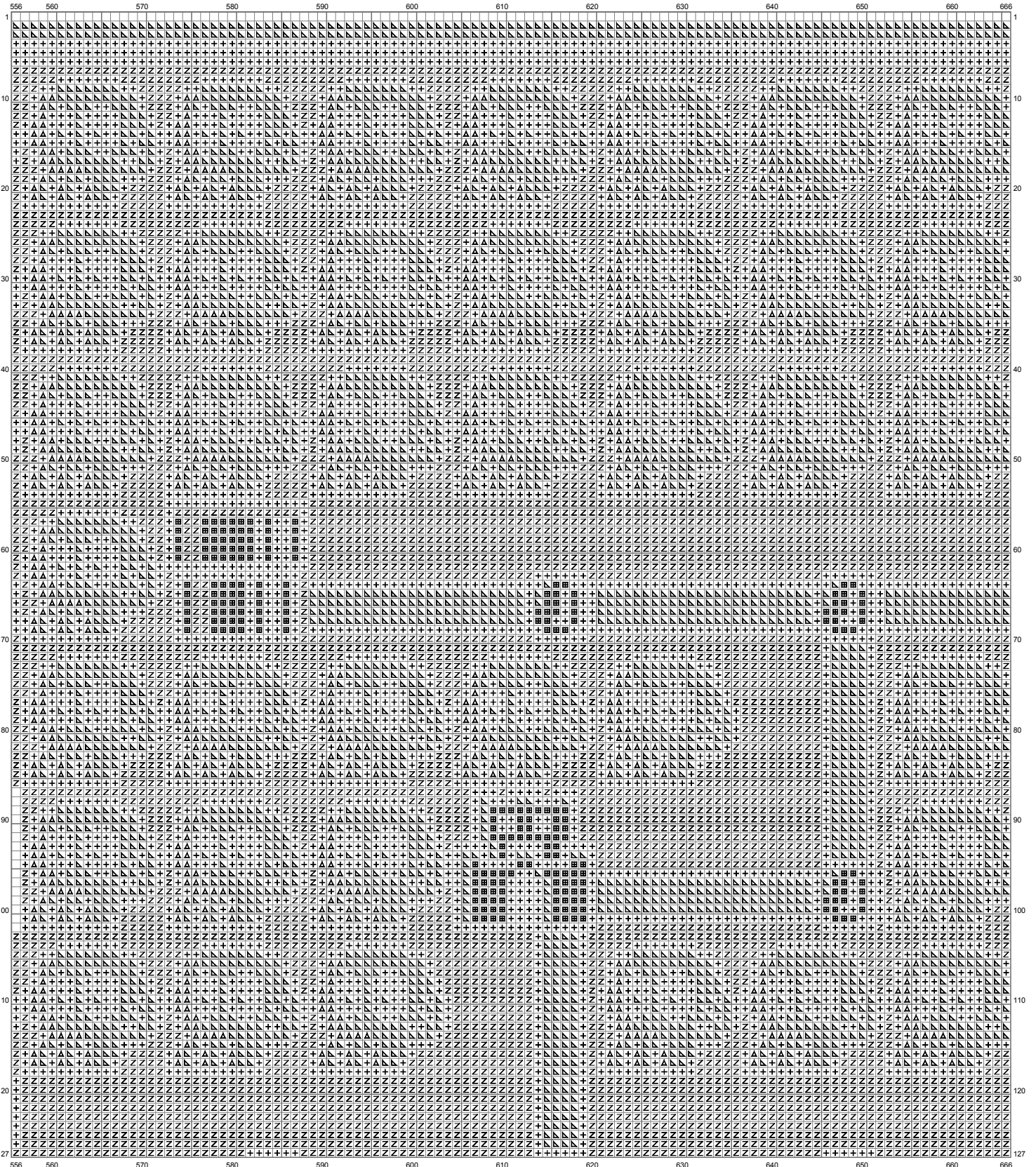
(This chart is printed using KG-Chart LE for Cross Stitch.)

Untitled



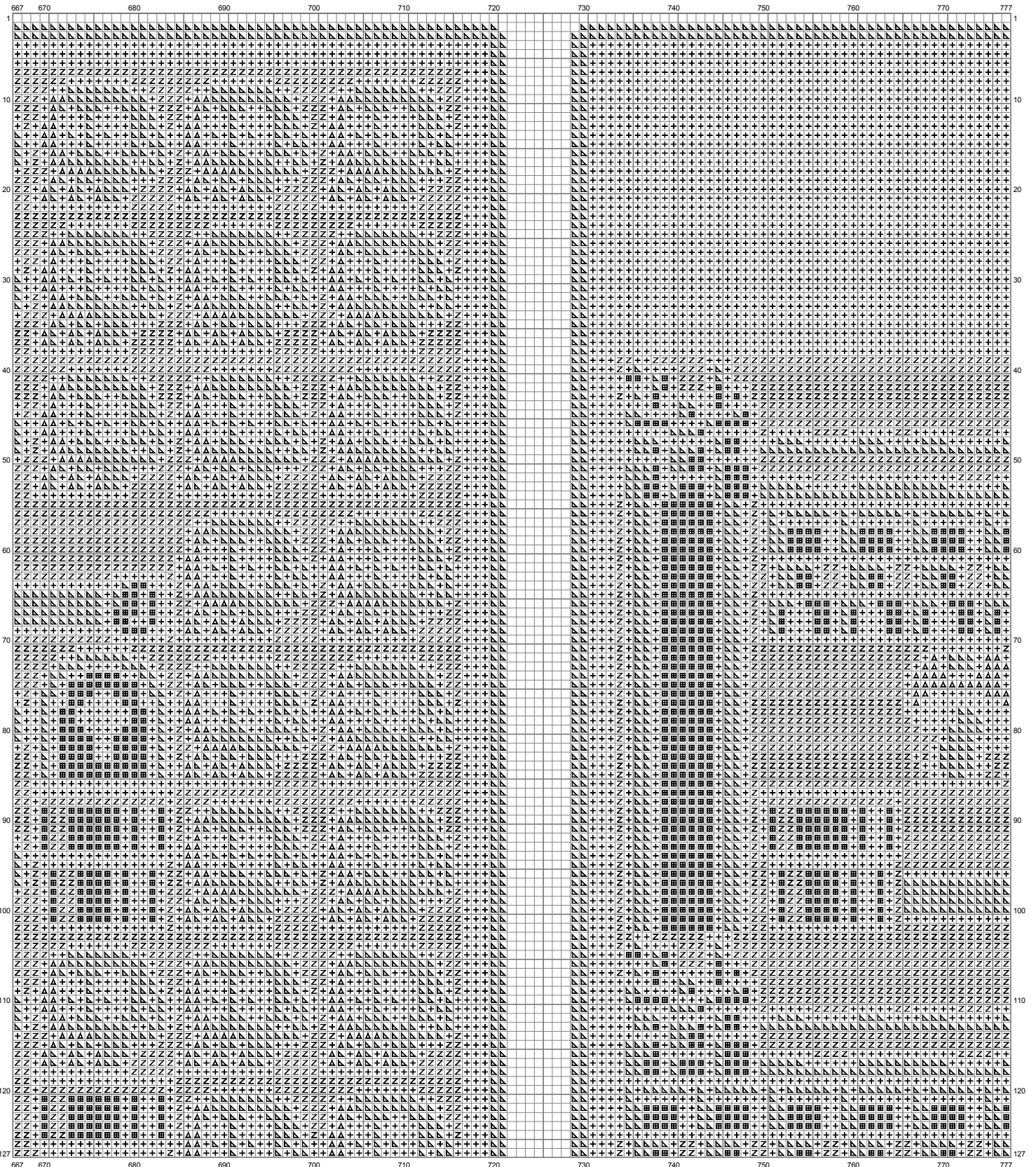
(This chart is printed using KG-Chart LE for Cross Stitch.)

Untitled



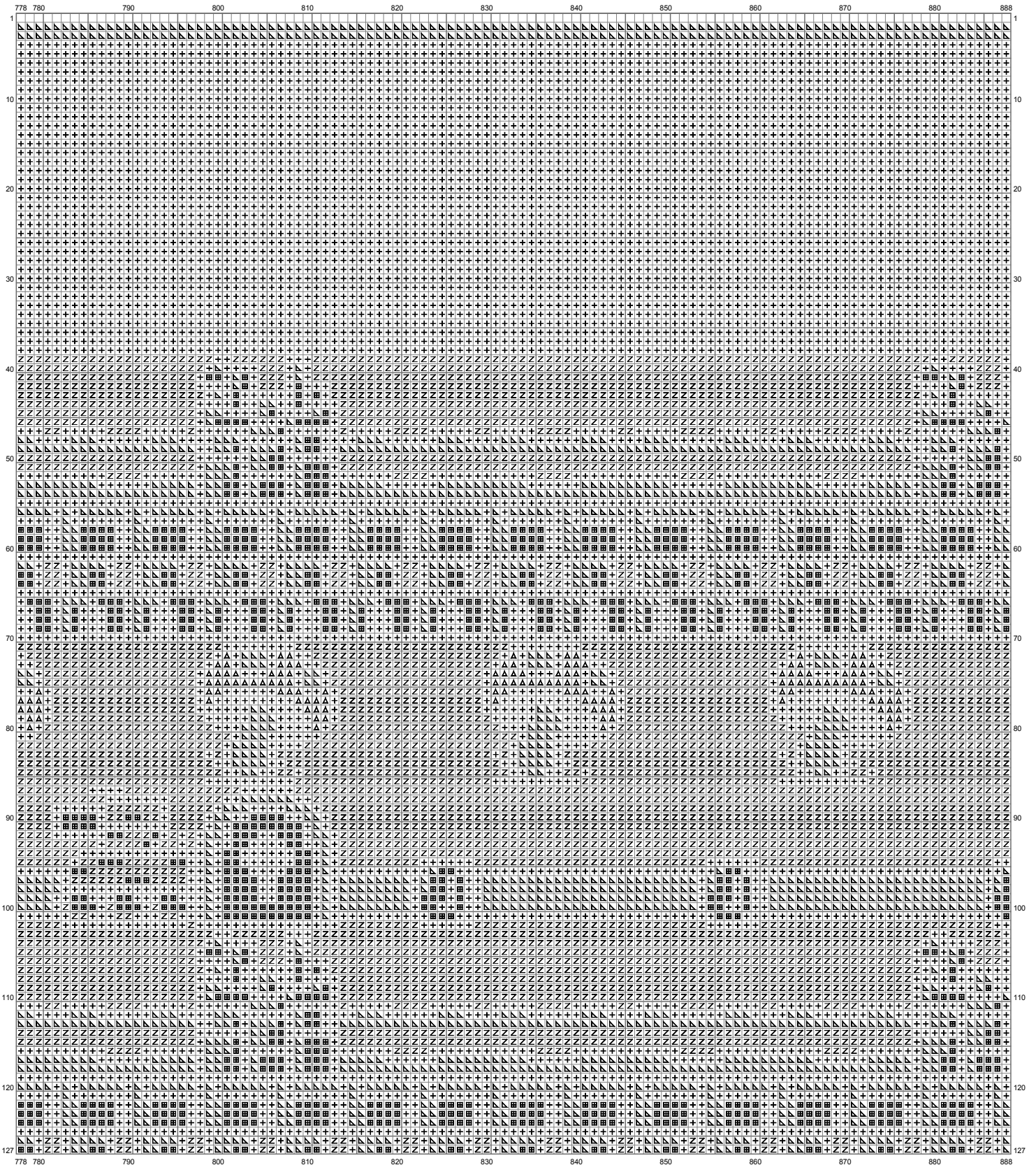
(This chart is printed using KG-Chart LE for Cross Stitch.)

Untitled



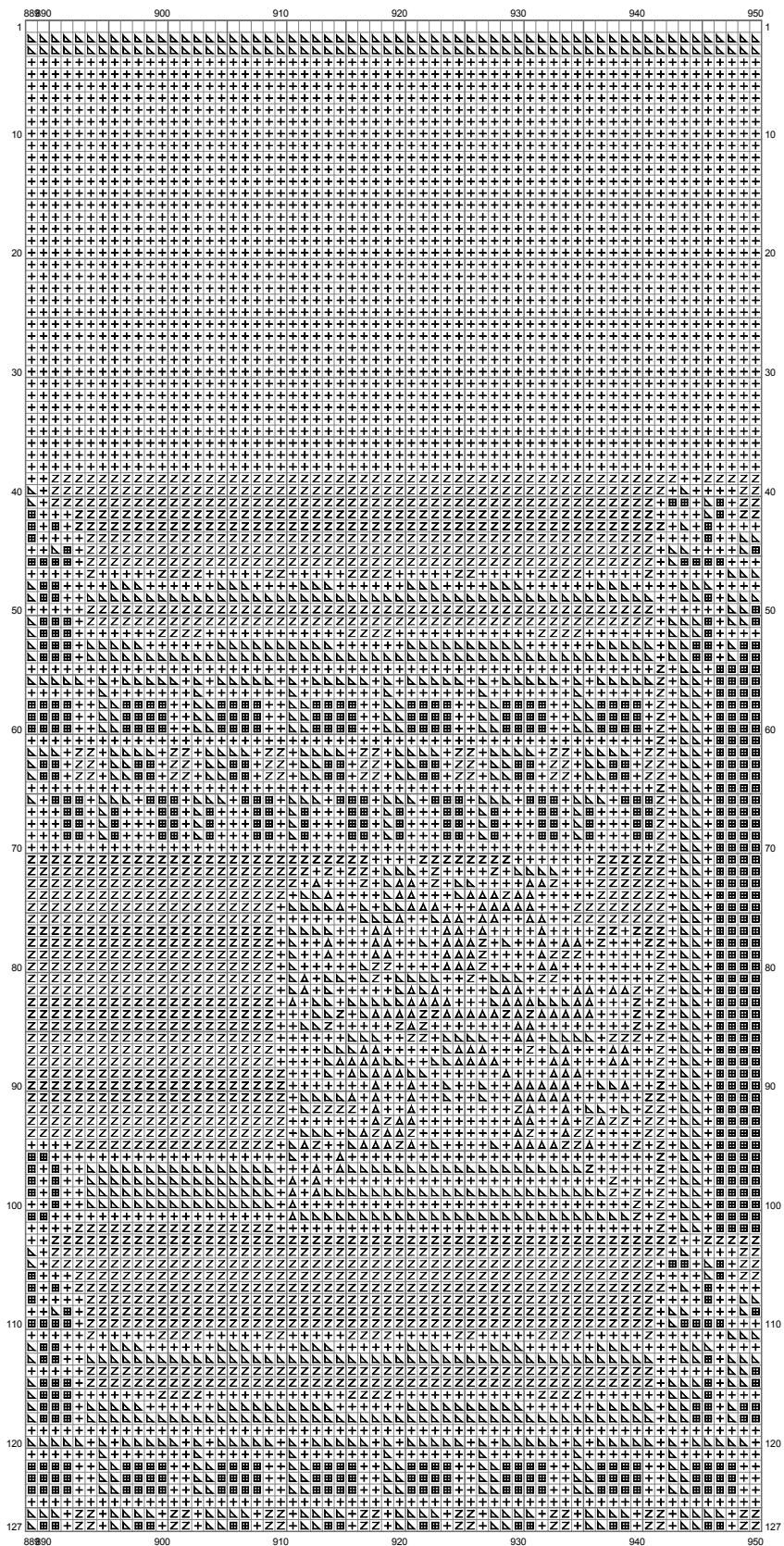
(This chart is printed using KG-Chart LE for Cross Stitch.)

Untitled



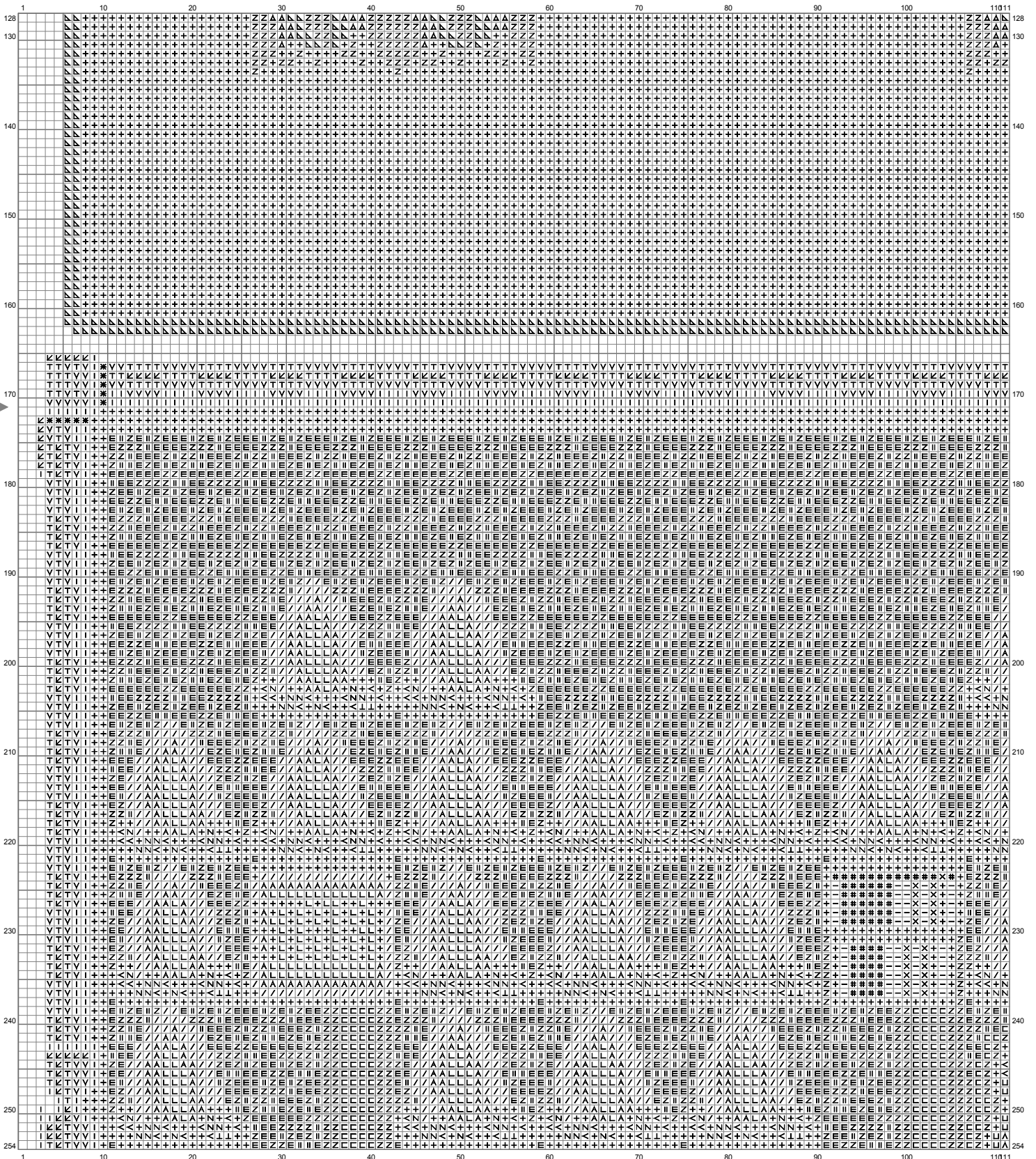
(This chart is printed using KG-Chart LE for Cross Stitch.)

Untitled

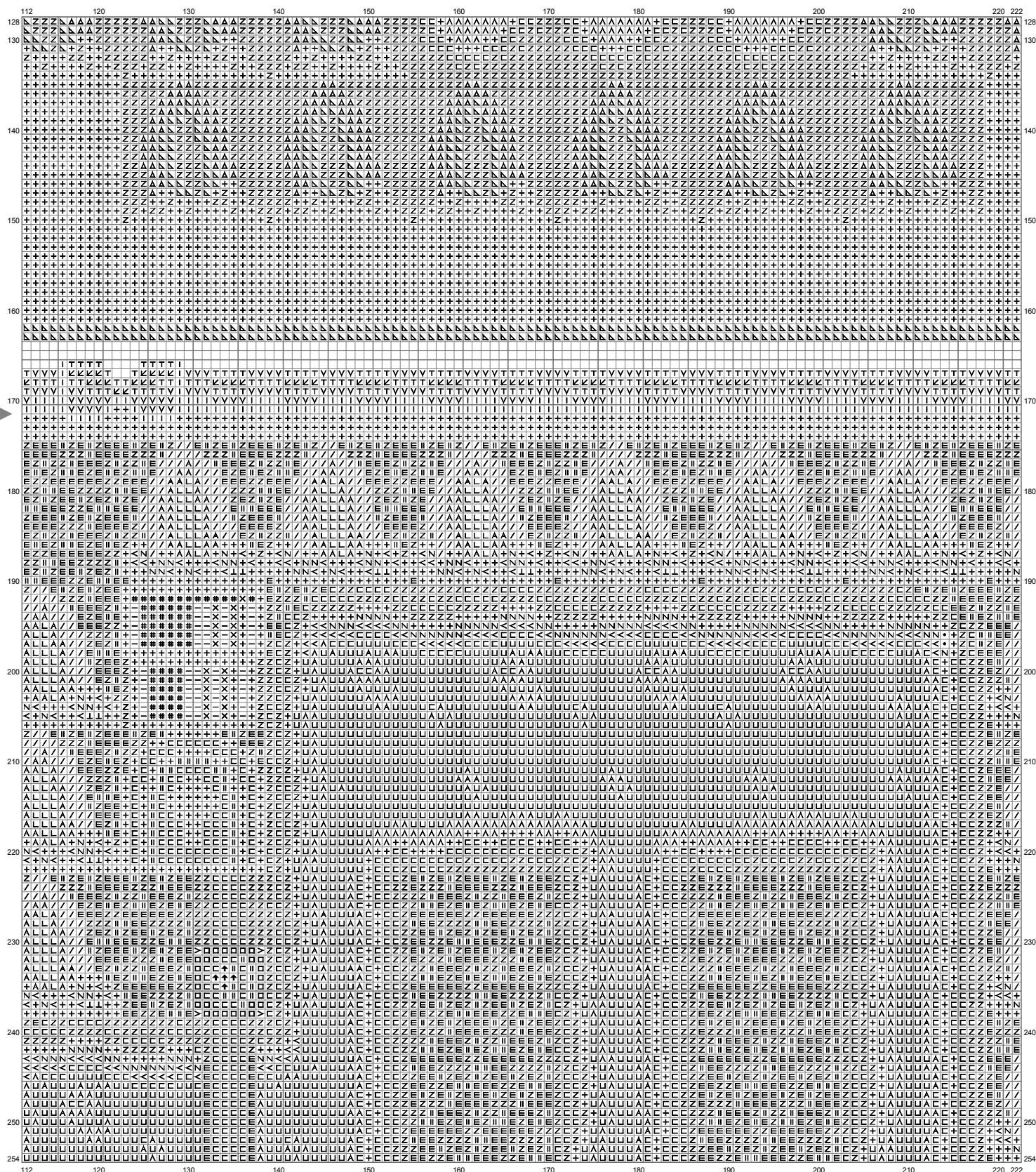


(This chart is printed using KG-Chart LE for Cross Stitch.)

Untitled

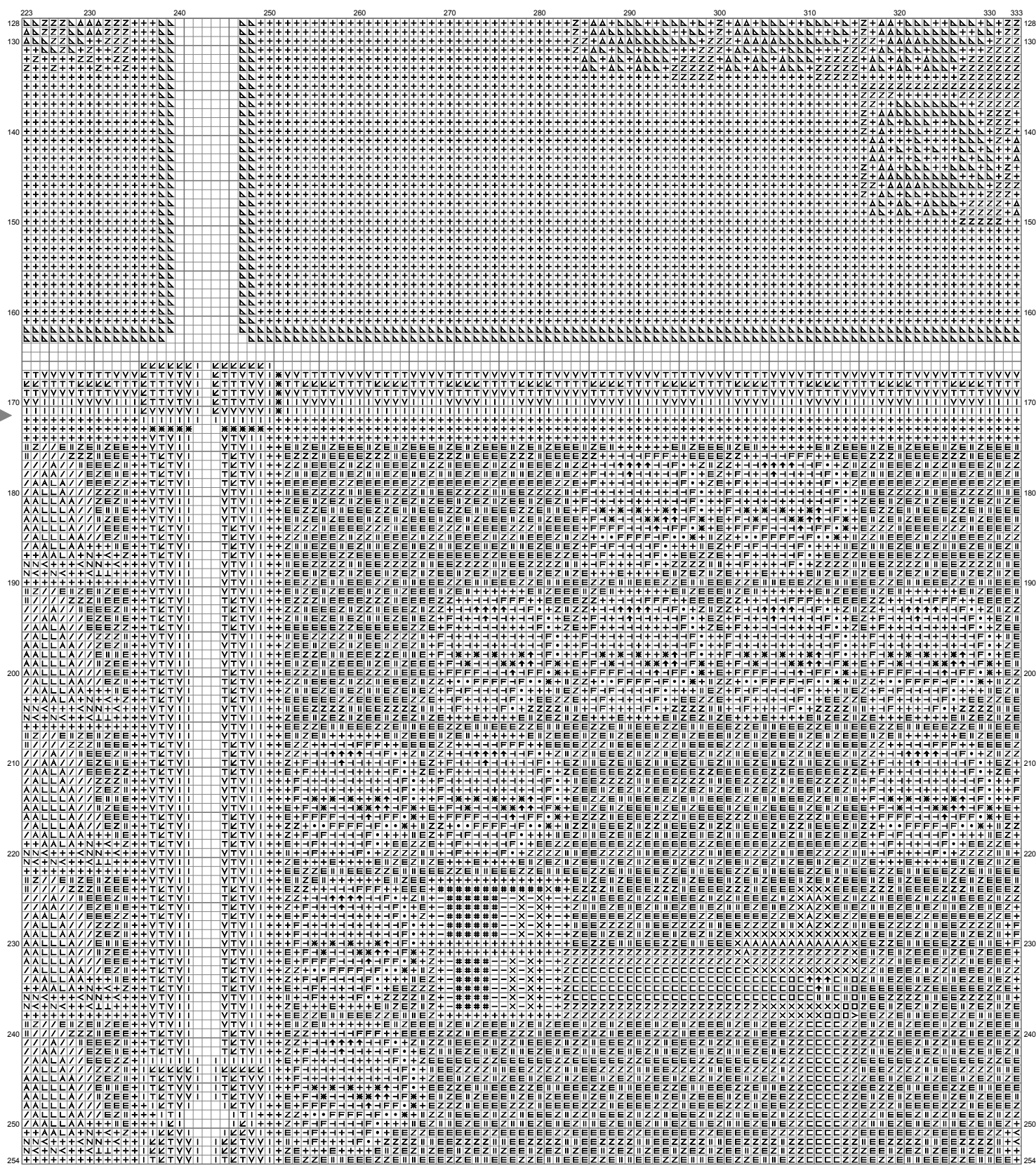


Untitled



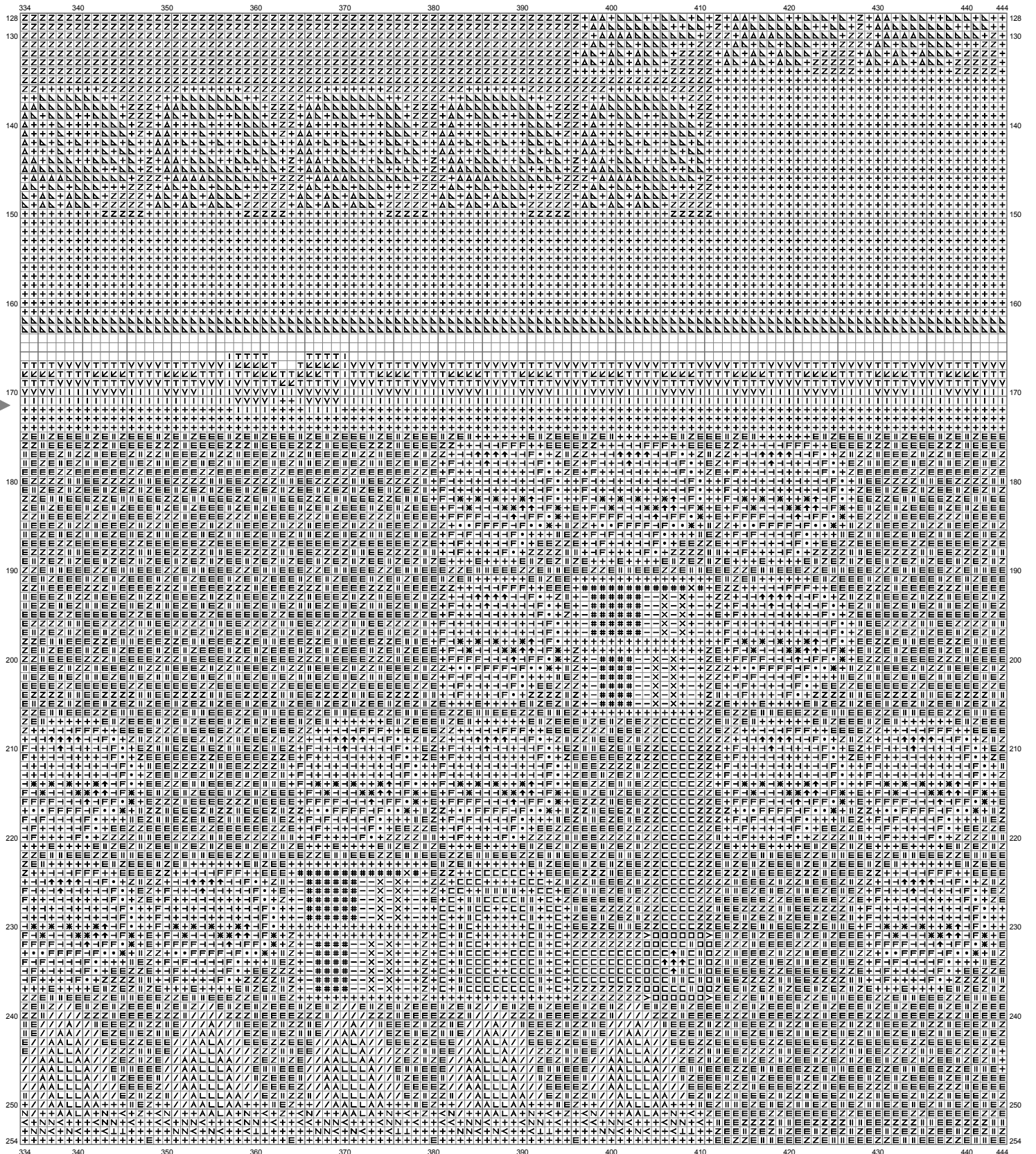
(This chart is printed using KG-Chart LE for Cross Stitch.)

Untitled



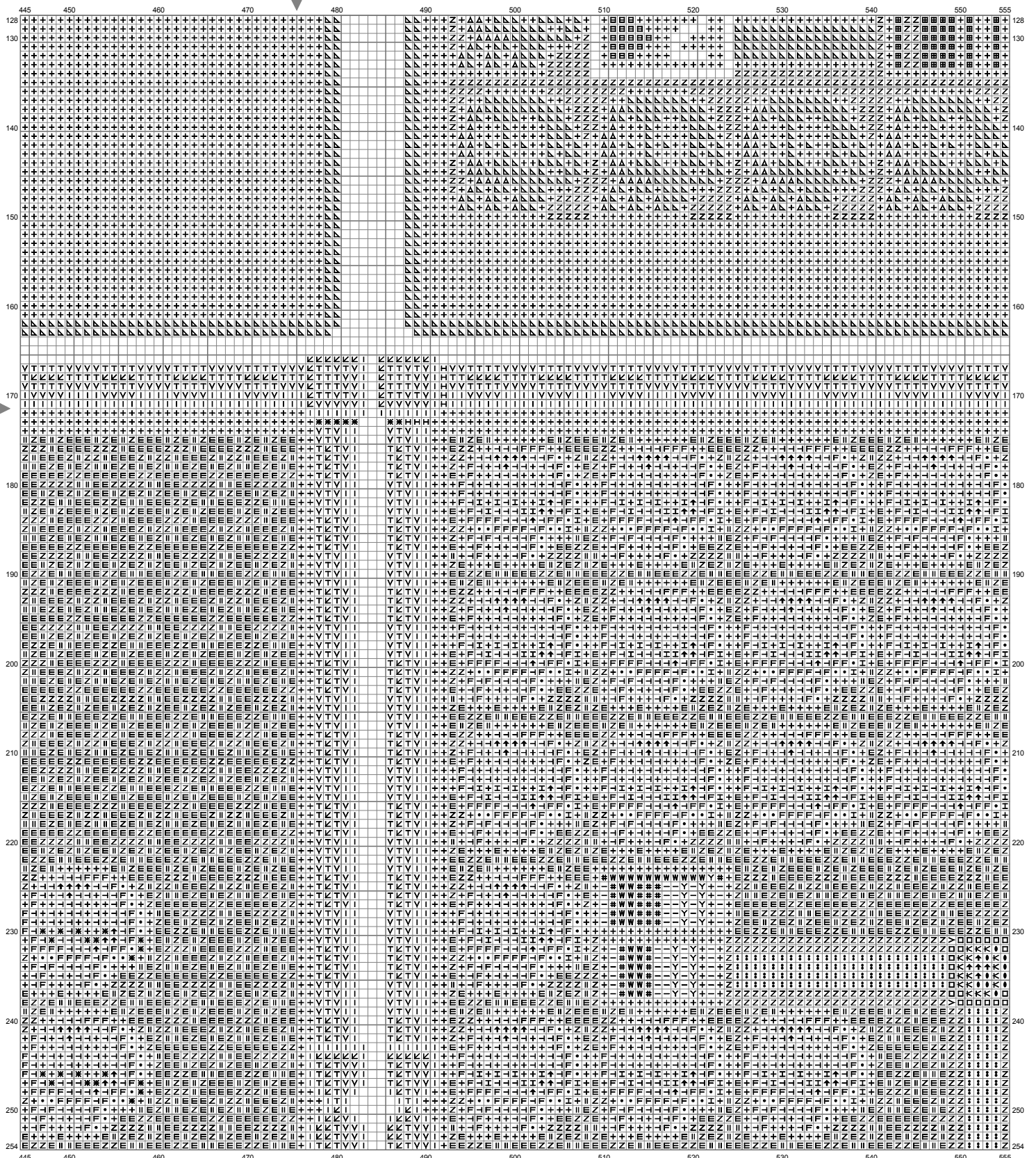
(This chart is printed using KG-Chart LE for Cross Stitch.)

Untitled



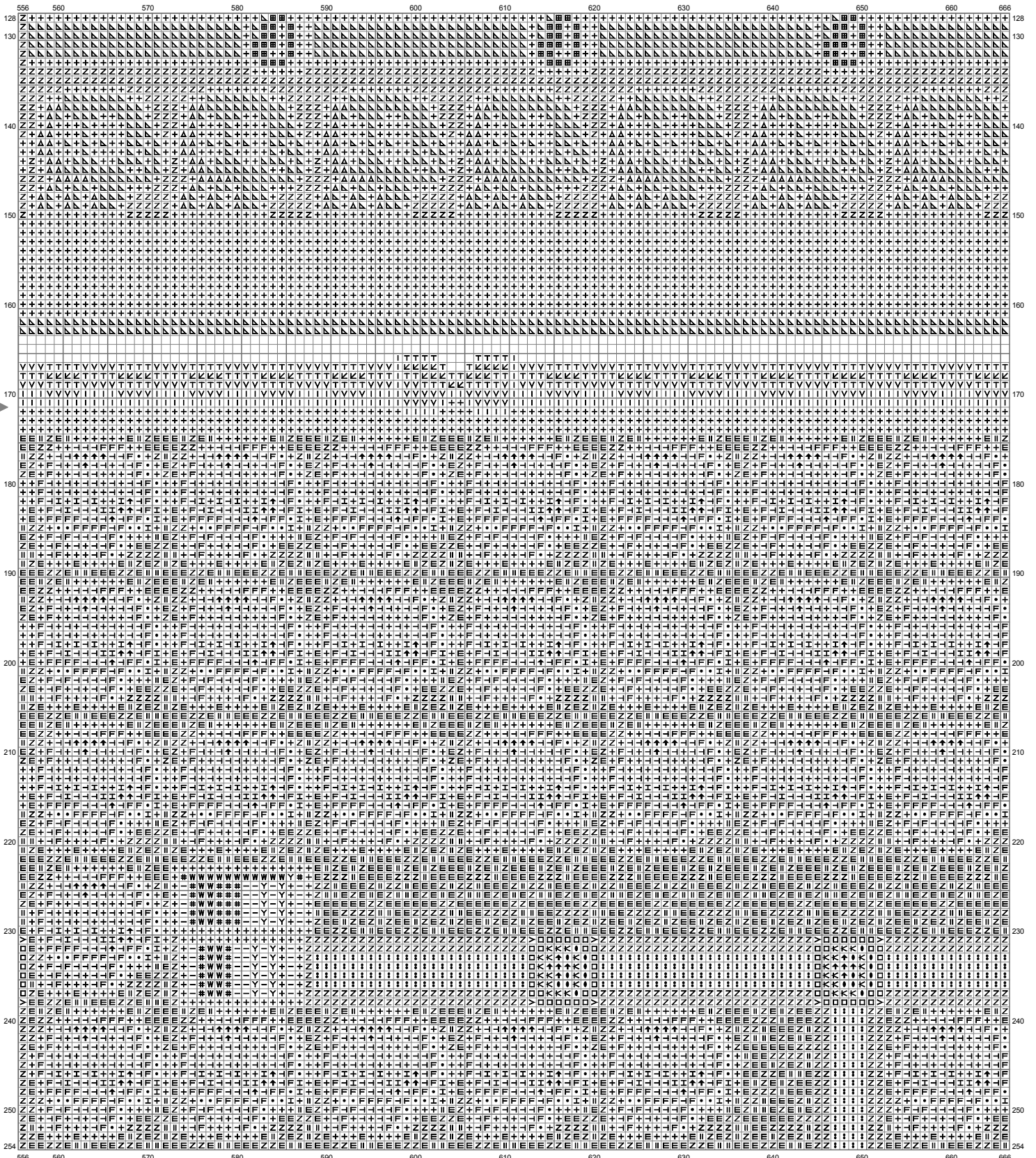
(This chart is printed using KG-Chart LE for Cross Stitch.)

Untitled



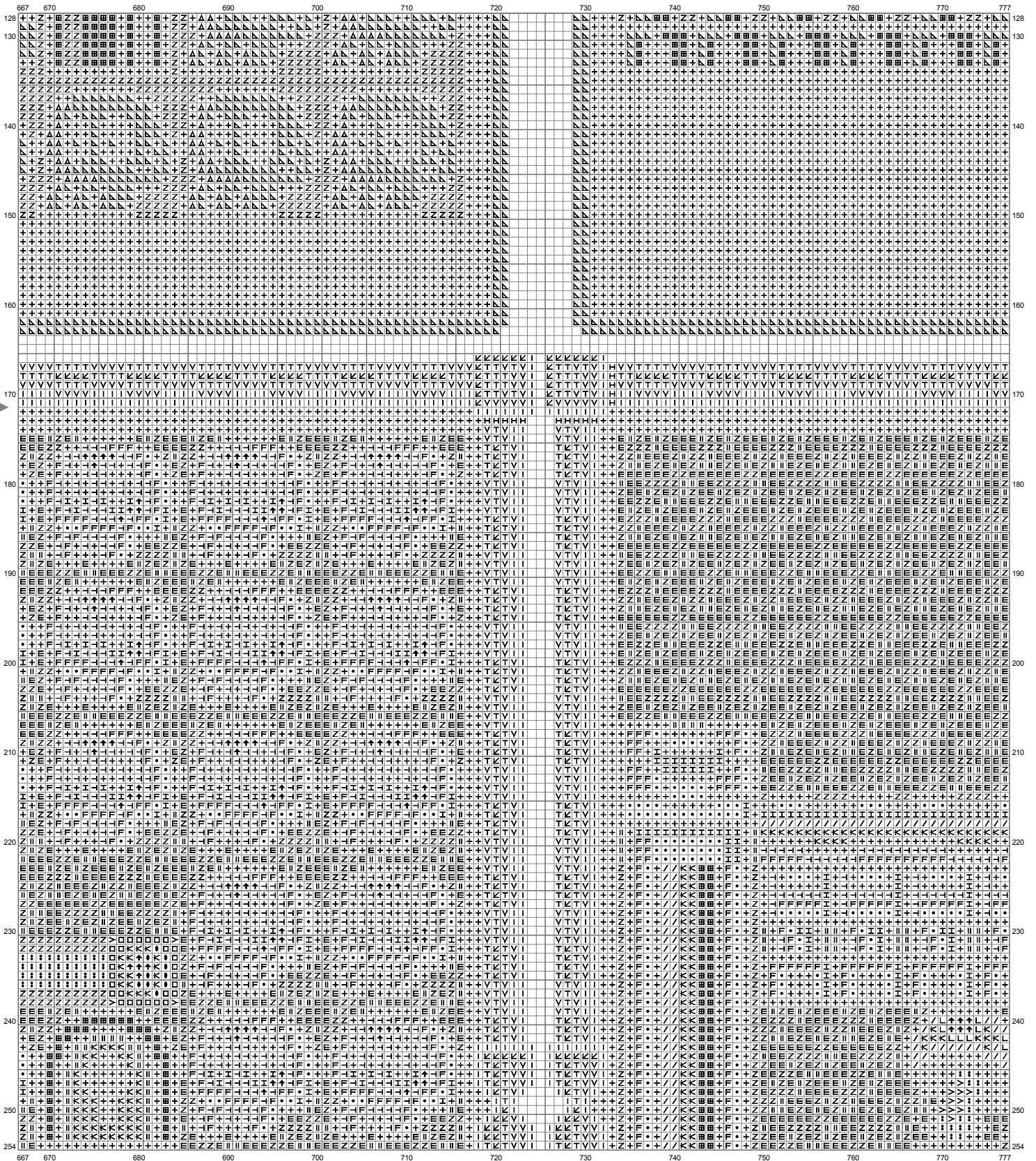
(This chart is printed using KG-Chart LE for Cross Stitch.)

Untitled



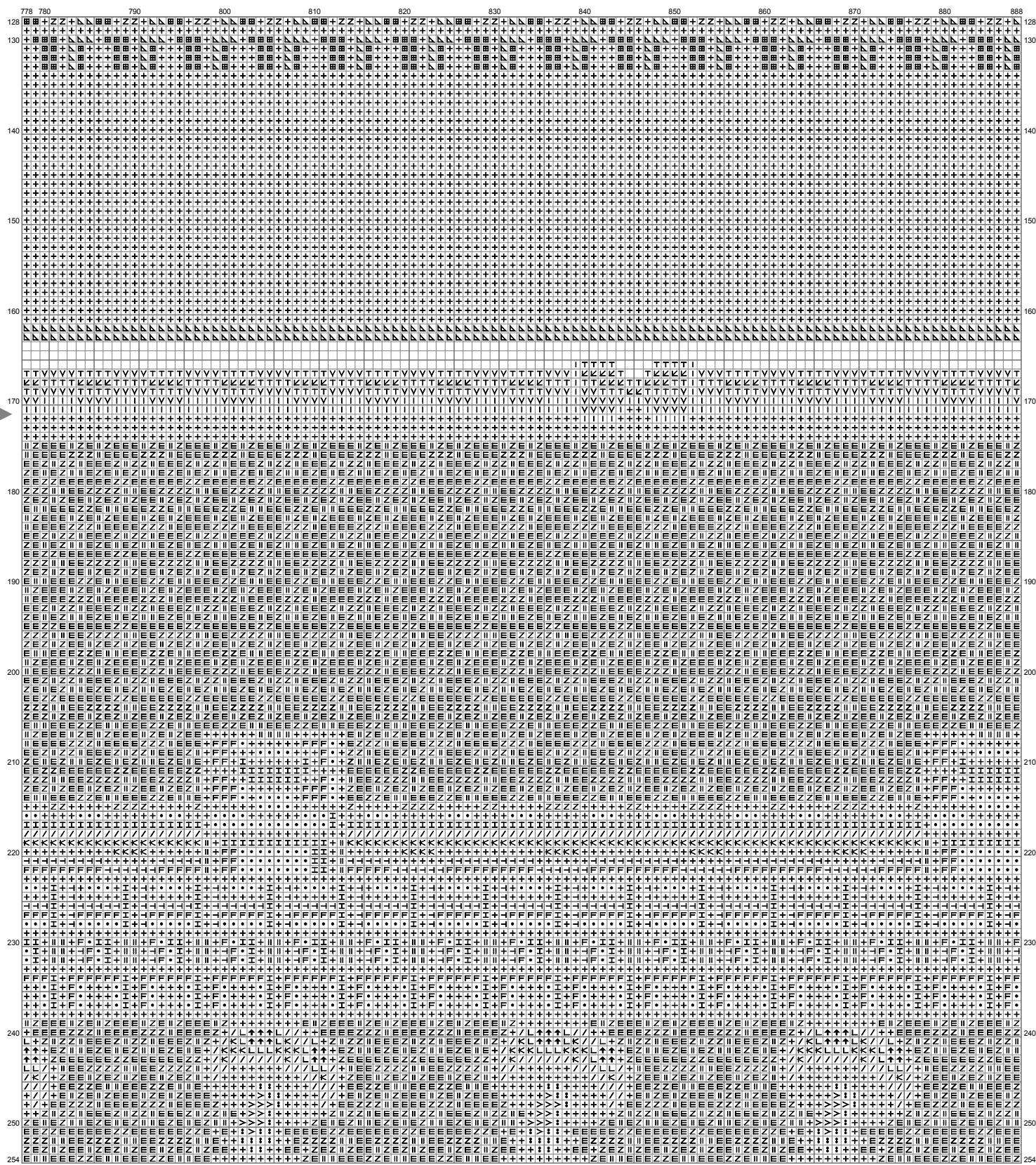
(This chart is printed using KG-Chart LE for Cross Stitch.)

Untitled



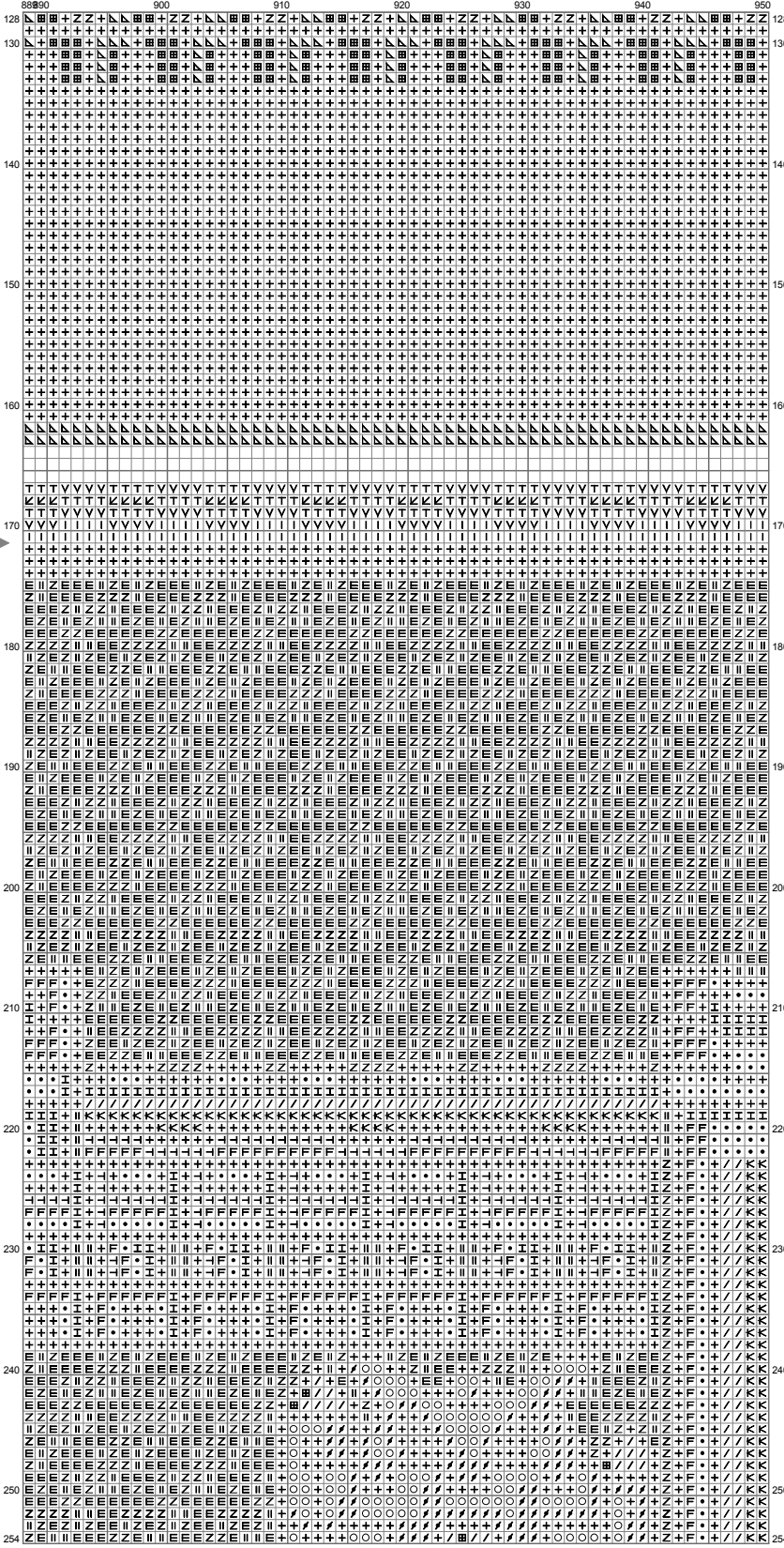
(This chart is printed using KG-Chart LE for Cross Stitch.)

Untitled



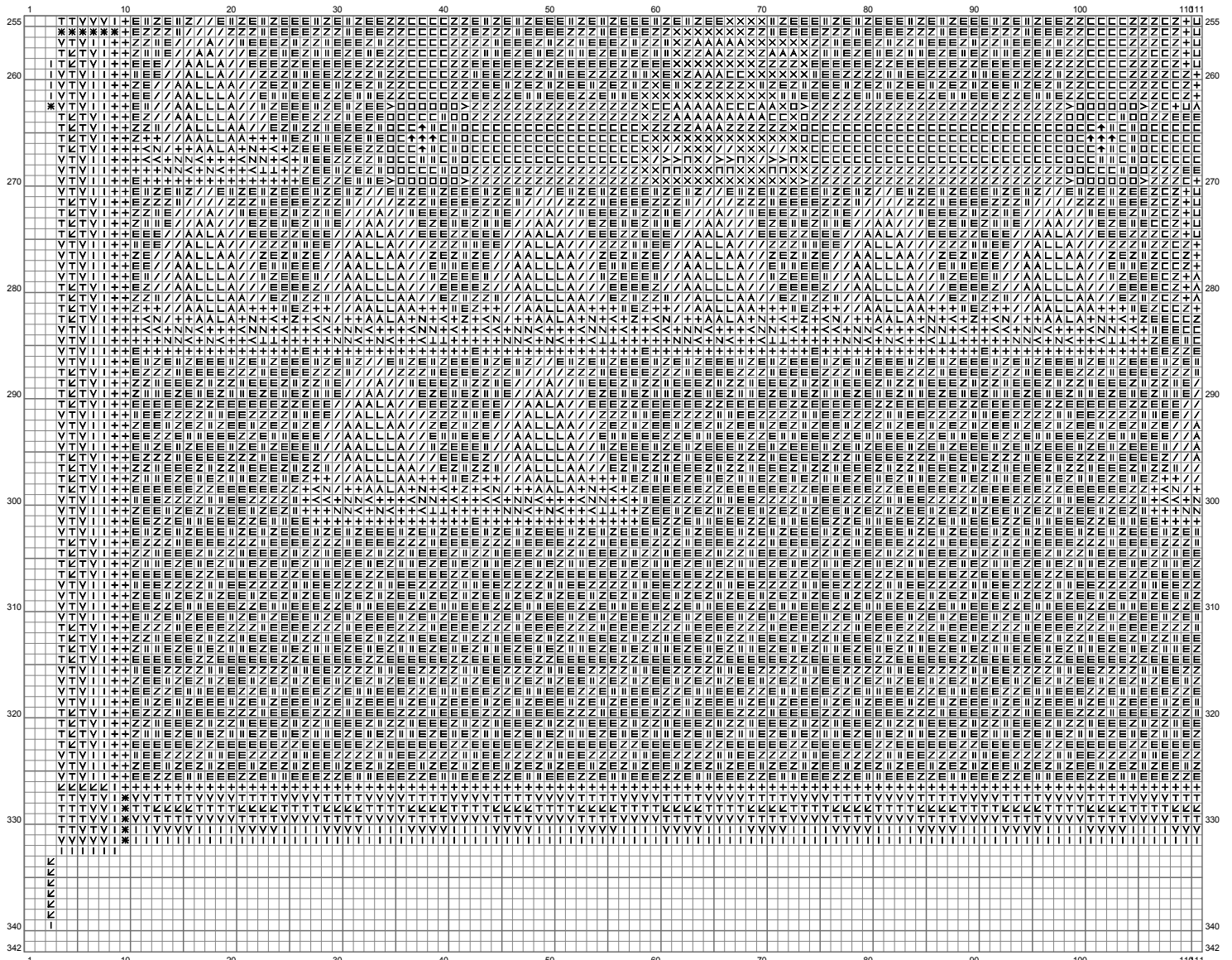
(This chart is printed using KG-Chart LE for Cross Stitch.)

Untitled



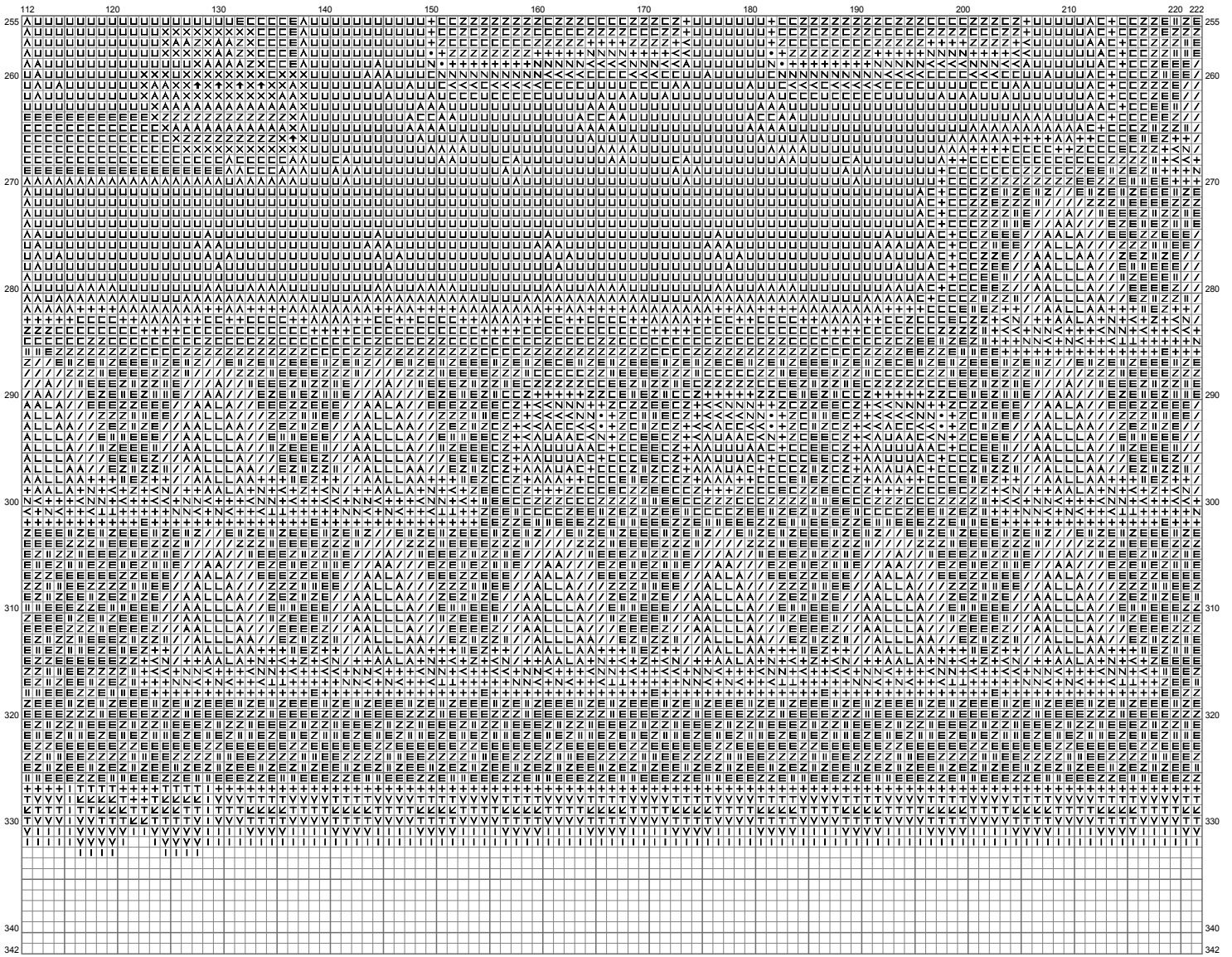
(This chart is printed using KG-Chart LE for Cross Stitch.)

Untitled



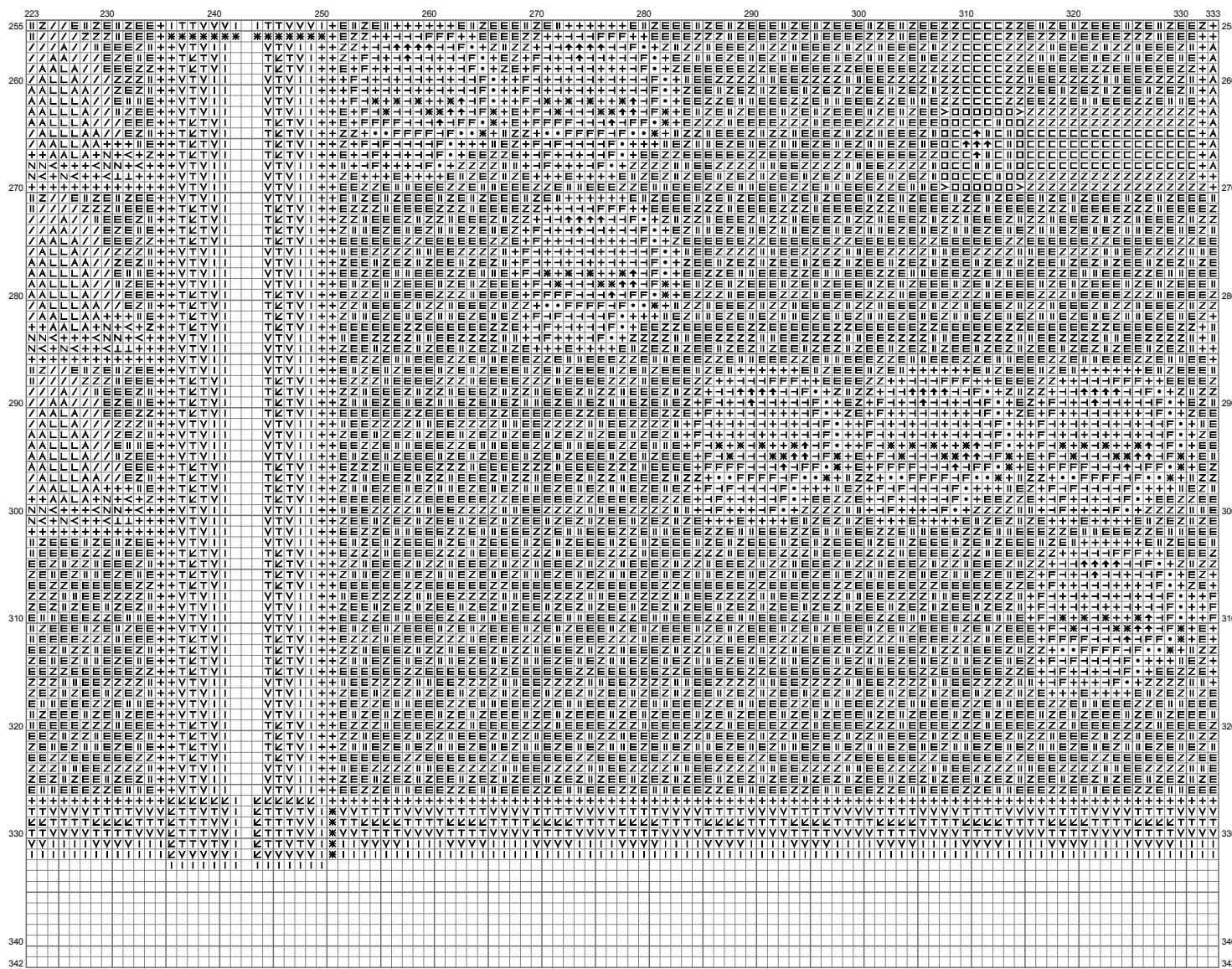
(This chart is printed using KG-Chart LE for Cross Stitch.)

Untitled



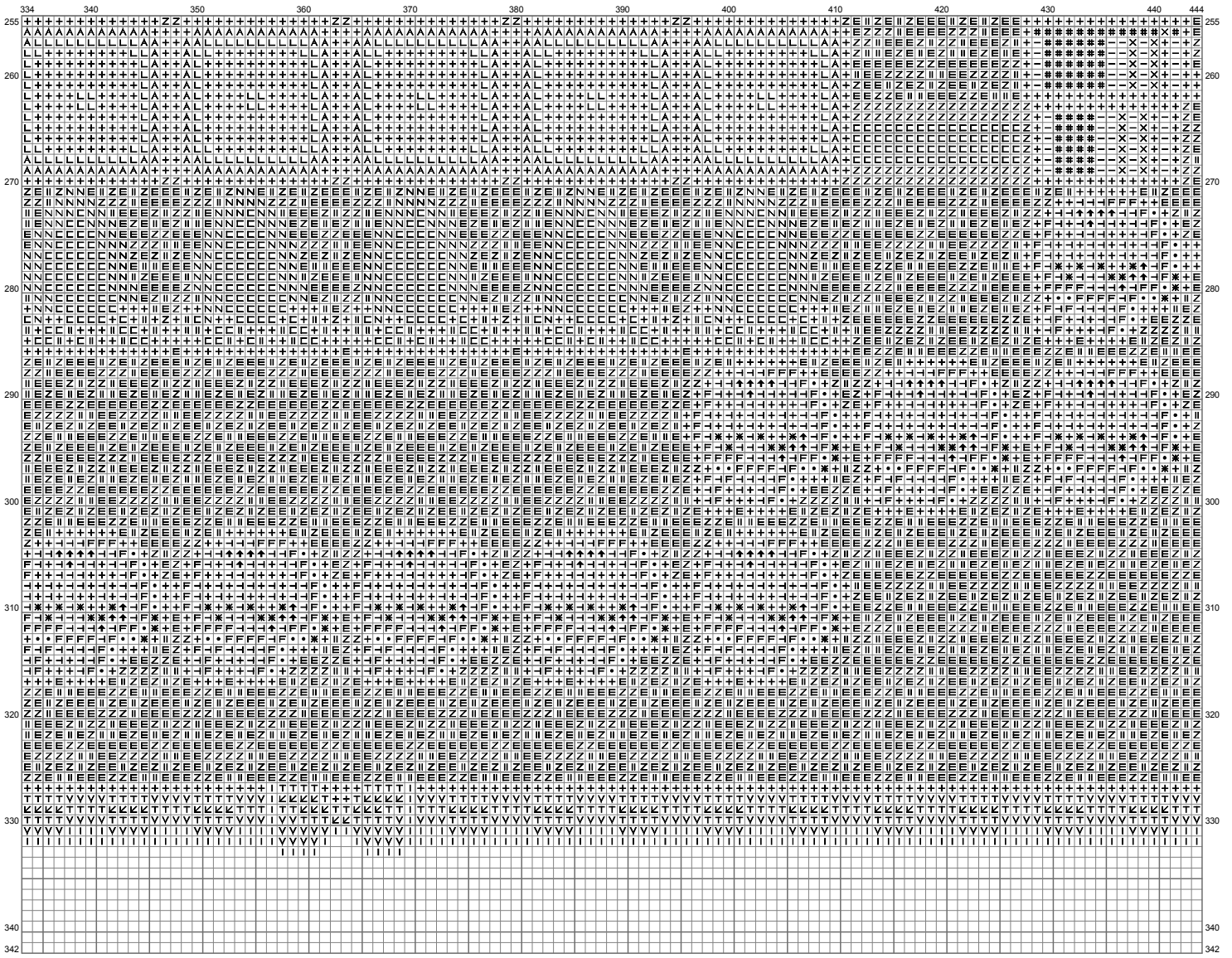
(This chart is printed using KG-Chart LE for Cross Stitch.)

Untitled

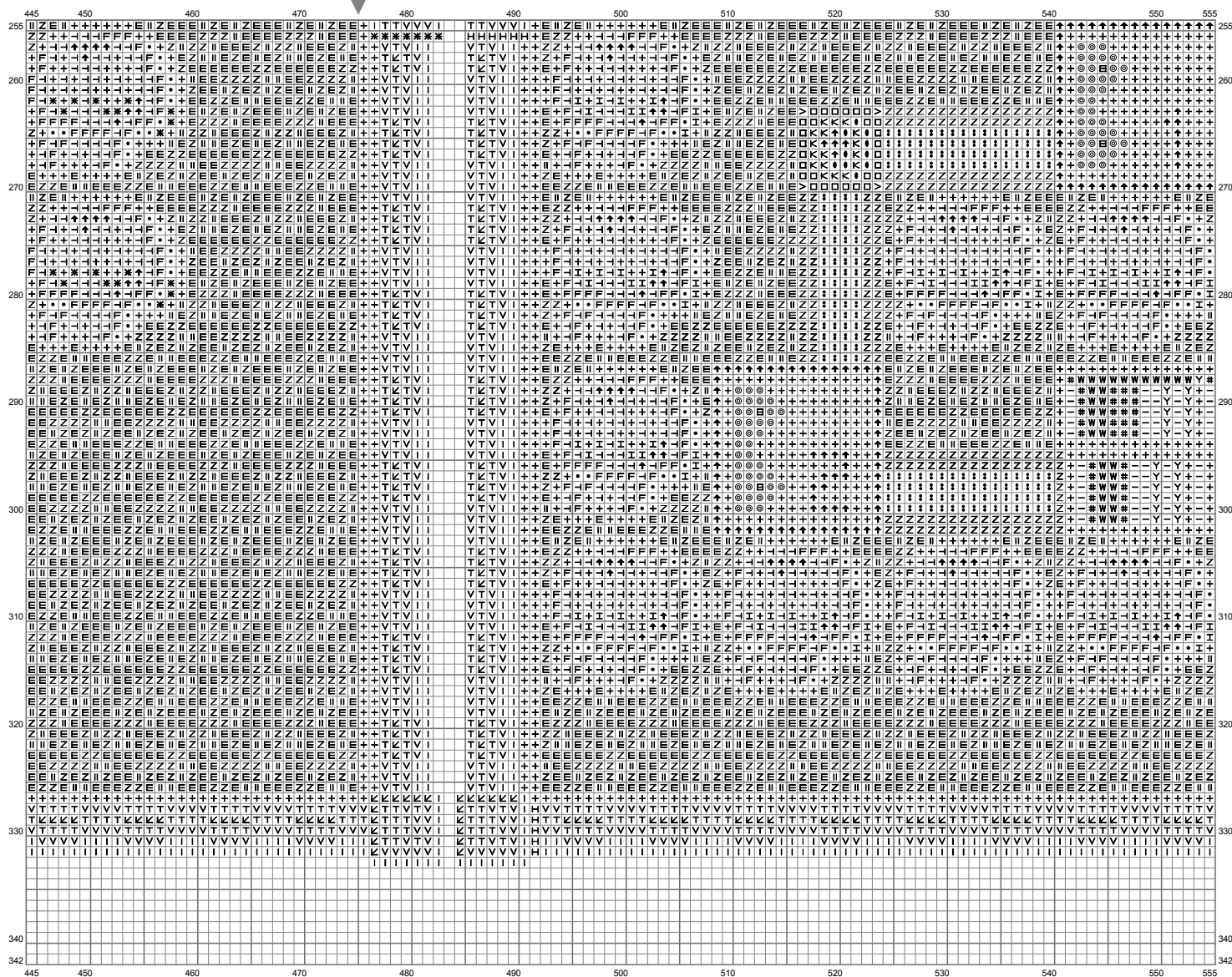


(This chart is printed using KG-Chart LE for Cross Stitch.)

Untitled

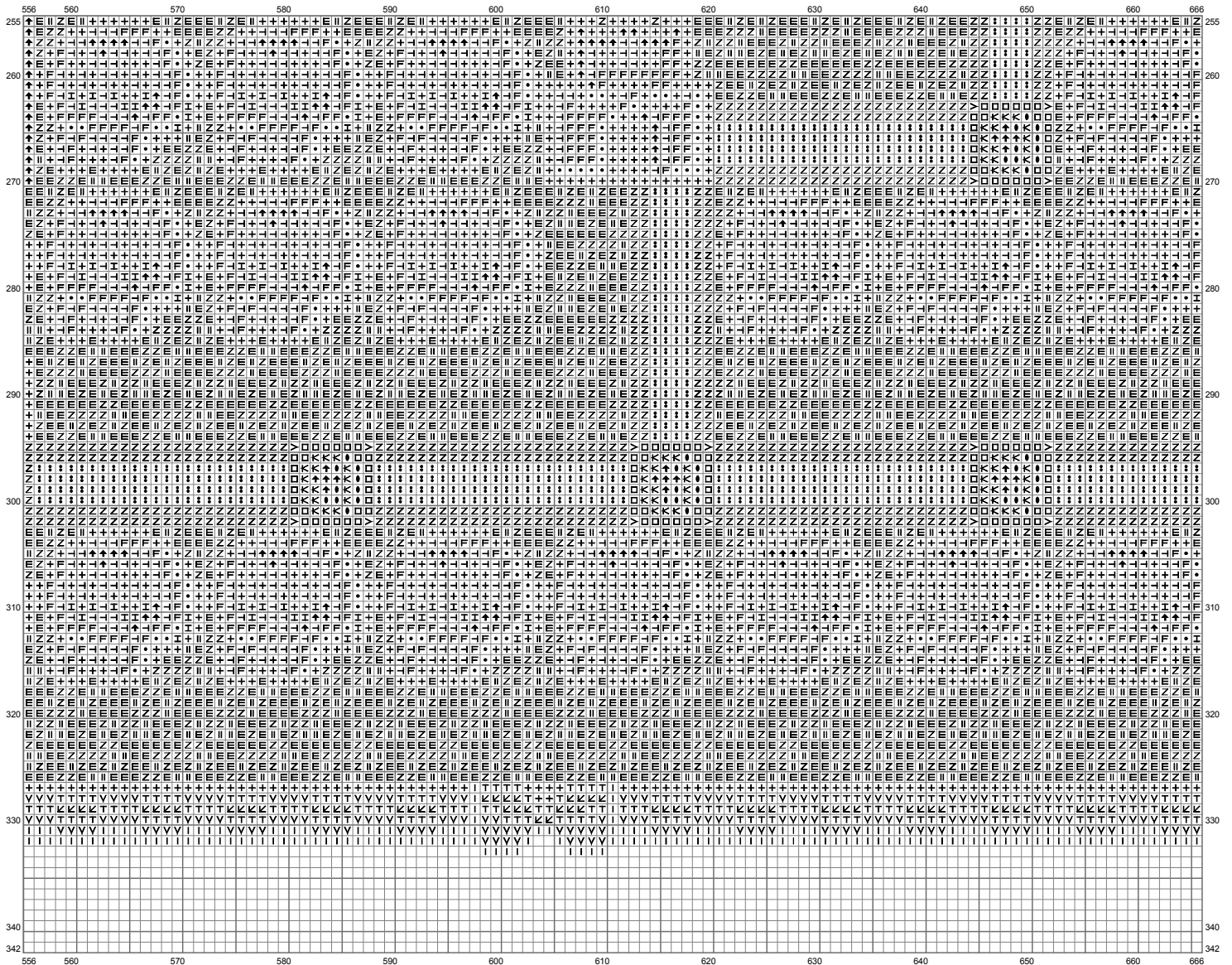


Untitled

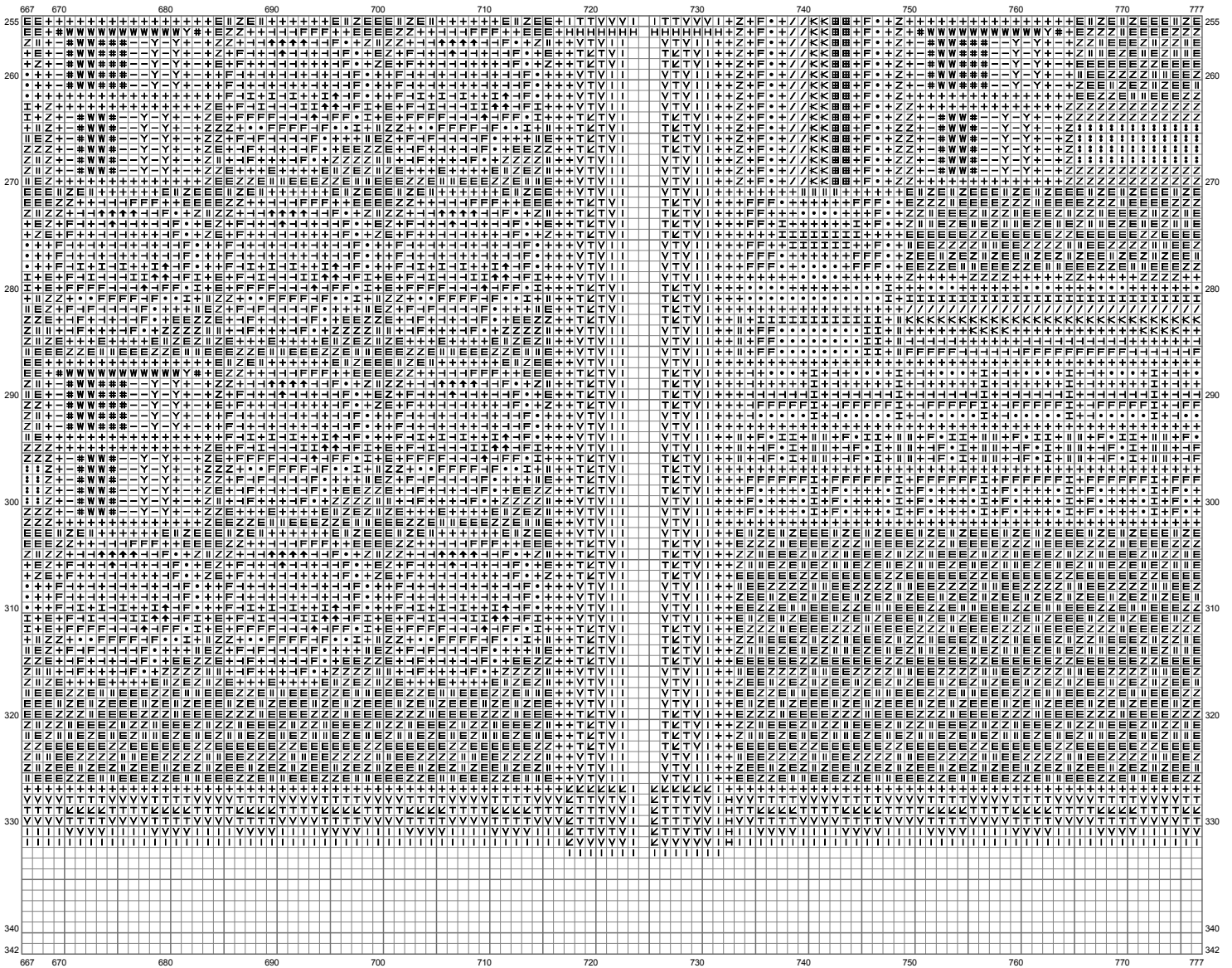


(This chart is printed using KG-Chart LE for Cross Stitch.)

Untitled

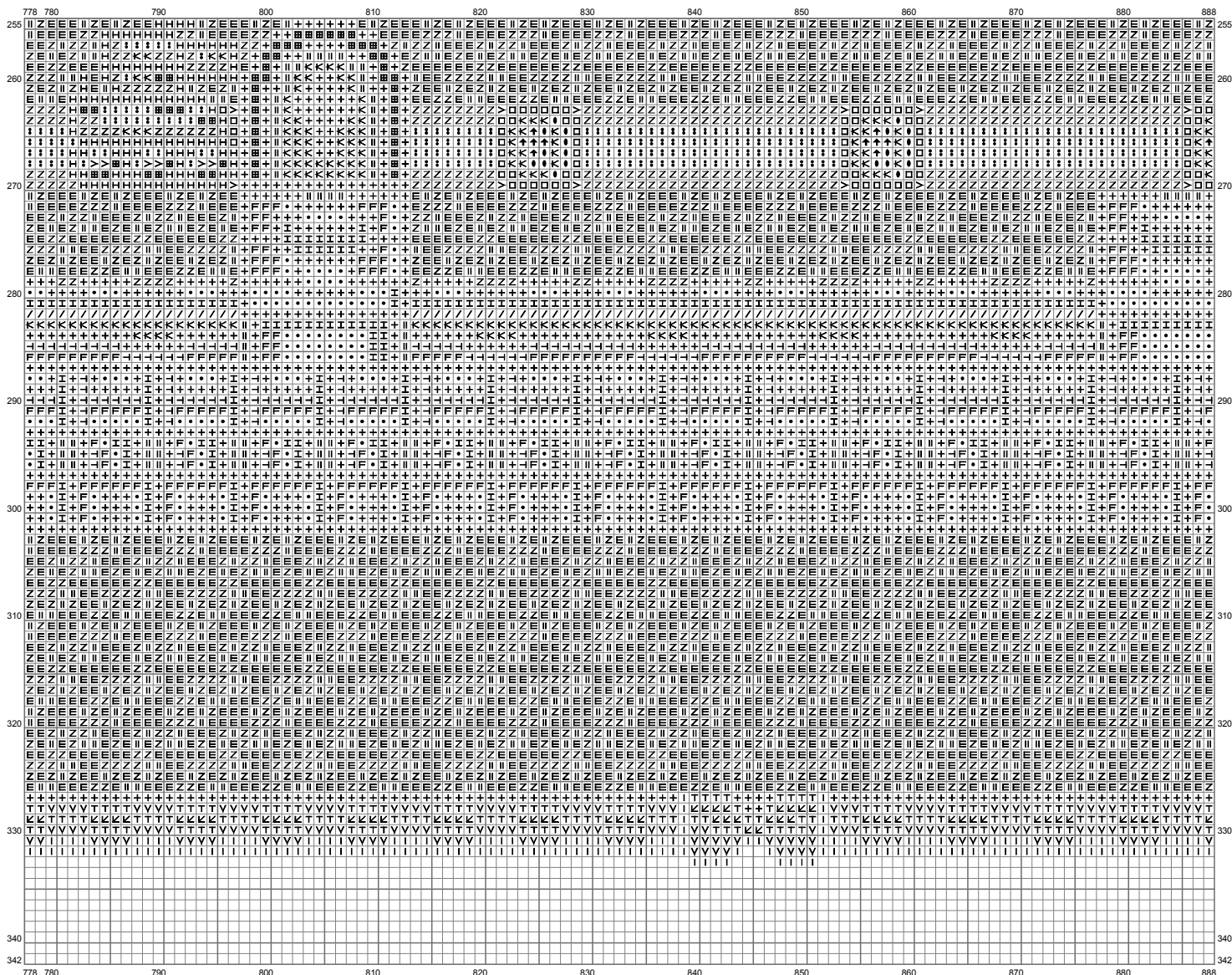


Untitled

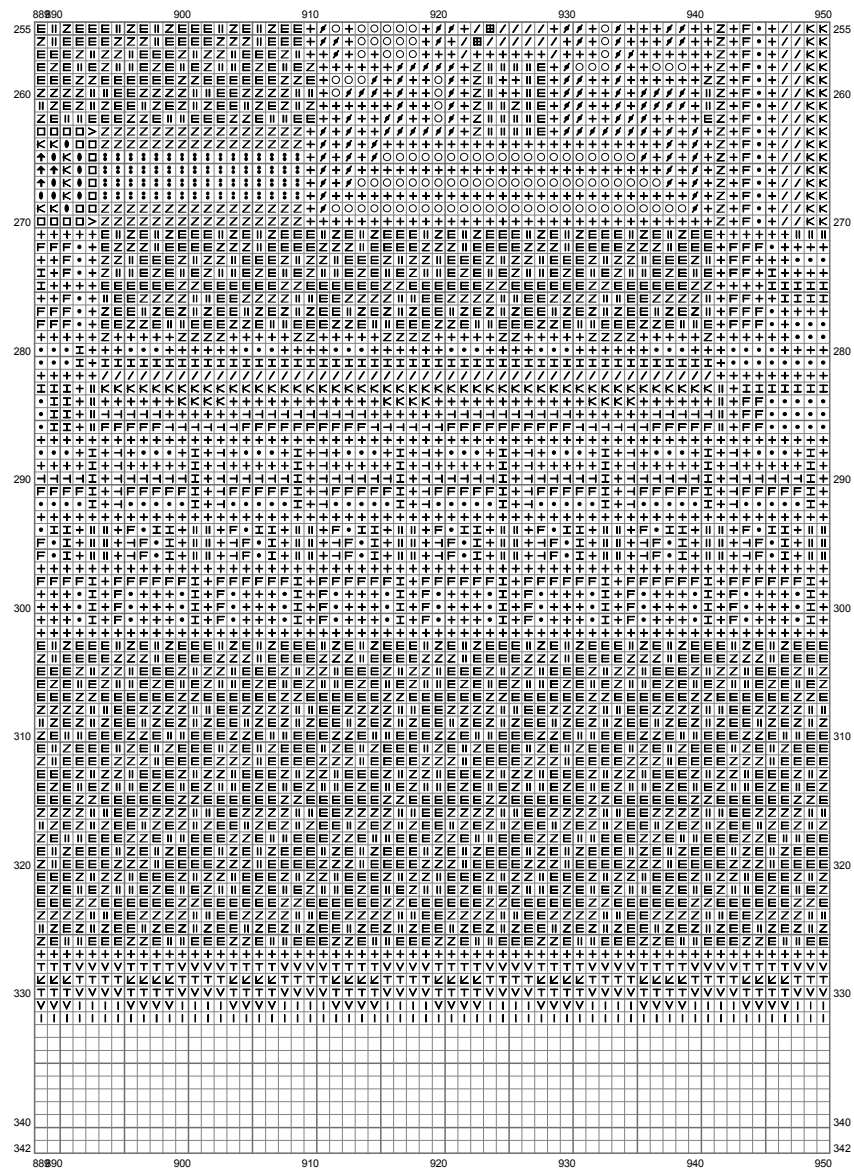


(This chart is printed using KG-Chart LE for Cross Stitch.)

Untitled



Untitled



(This chart is printed using KG-Chart LE for Cross Stitch.)

Untitled

Stitch Count:950w x 342h











































Cloth:Aida Cloth's Color:White

Finished Size:268.11 cm x 96.52 cm (18 ct./inch)

Total 42 Colors

Color Table (DMC)

Cross Stitch

	310	(96069 ct)		976	(116 ct)
	815	(28906 ct)		3023	(8355 ct)
	938	(495 ct)		3826	(9 ct)
	988	(660 ct)		3806	(7038 ct)
	934	(383 ct)		3822	(125 ct)
	3362	(510 ct)		3771	(25061 ct)
	367	(4565 ct)		743	(1524 ct)
	704	(606 ct)		3752	(1708 ct)
	640	(3554 ct)		3865	(1529 ct)
	502	(4452 ct)		742	(3512 ct)
	498	(5065 ct)		827	(88 ct)
	829	(14666 ct)		500	(165 ct)
	300	(767 ct)		3799	(2163 ct)
	817	(3383 ct)		3852	(953 ct)
	946	(3563 ct)		906	(198 ct)
	918	(63713 ct)		319	(138 ct)
	975	(926 ct)		869	(120 ct)
	740	(2658 ct)		782	(1729 ct)
	783	(4989 ct)		801	(212 ct)
	3022	(6157 ct)		3860	(212 ct)
	563	(4402 ct)		3843	(80 ct)