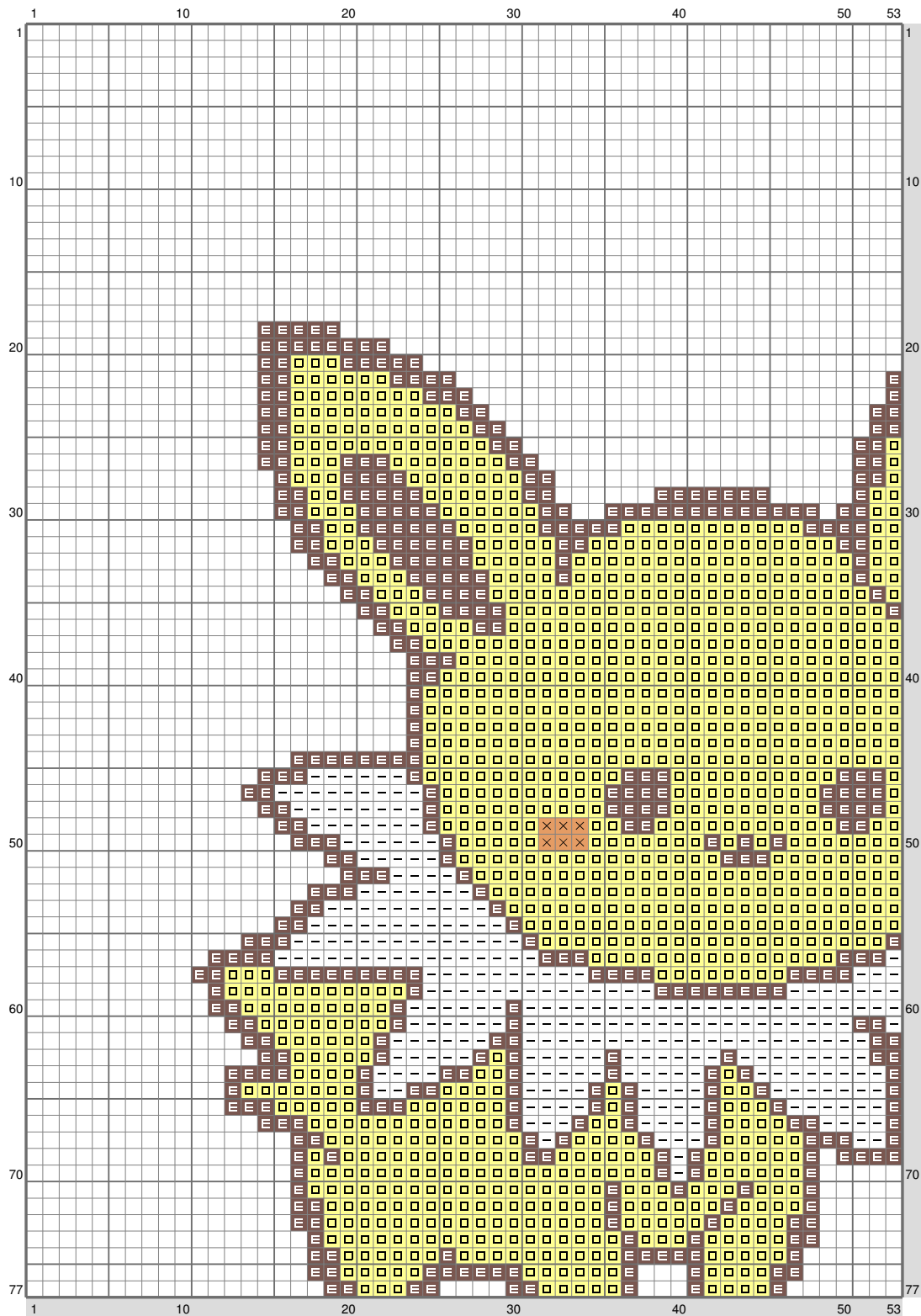
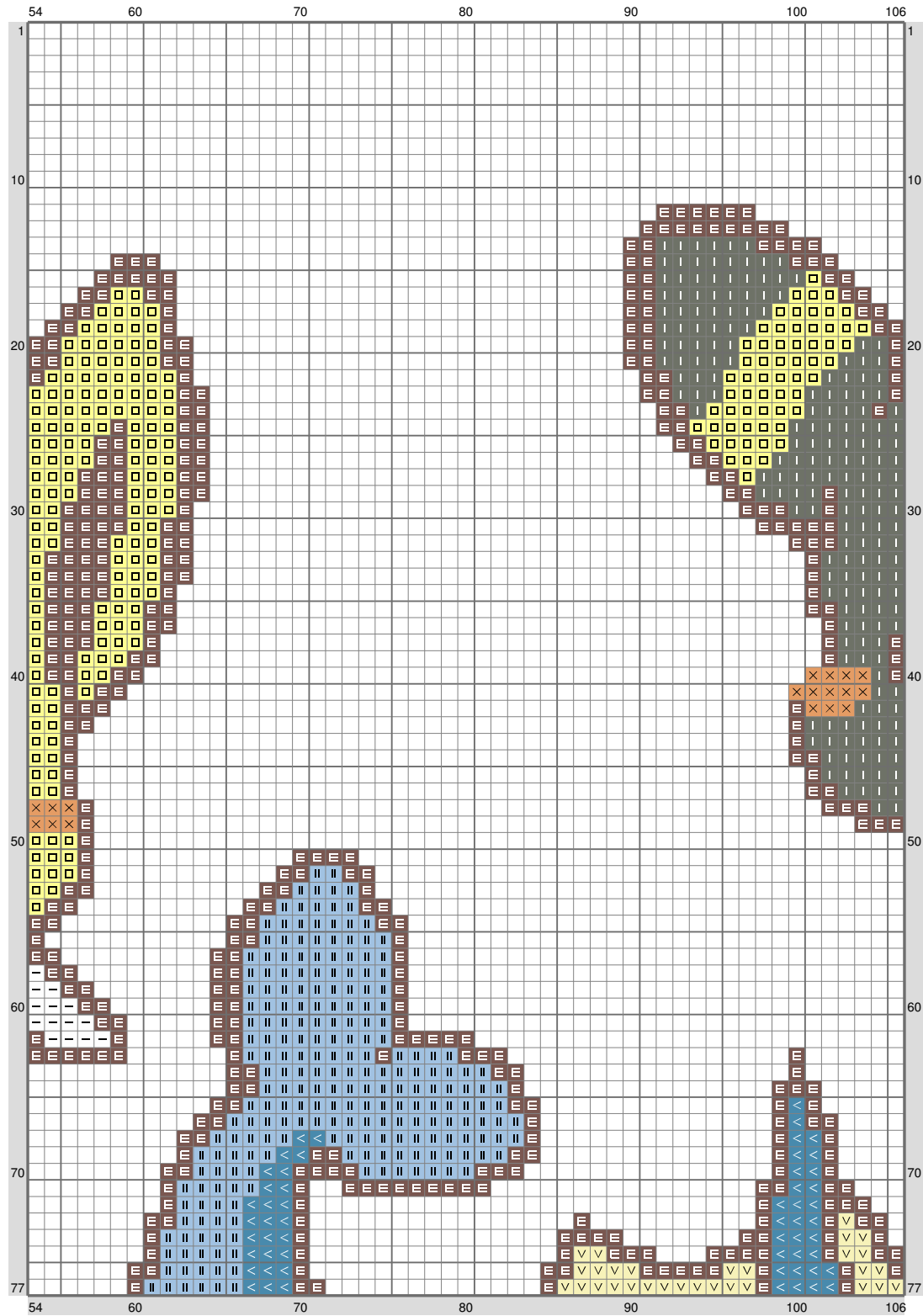


AllTheEvees



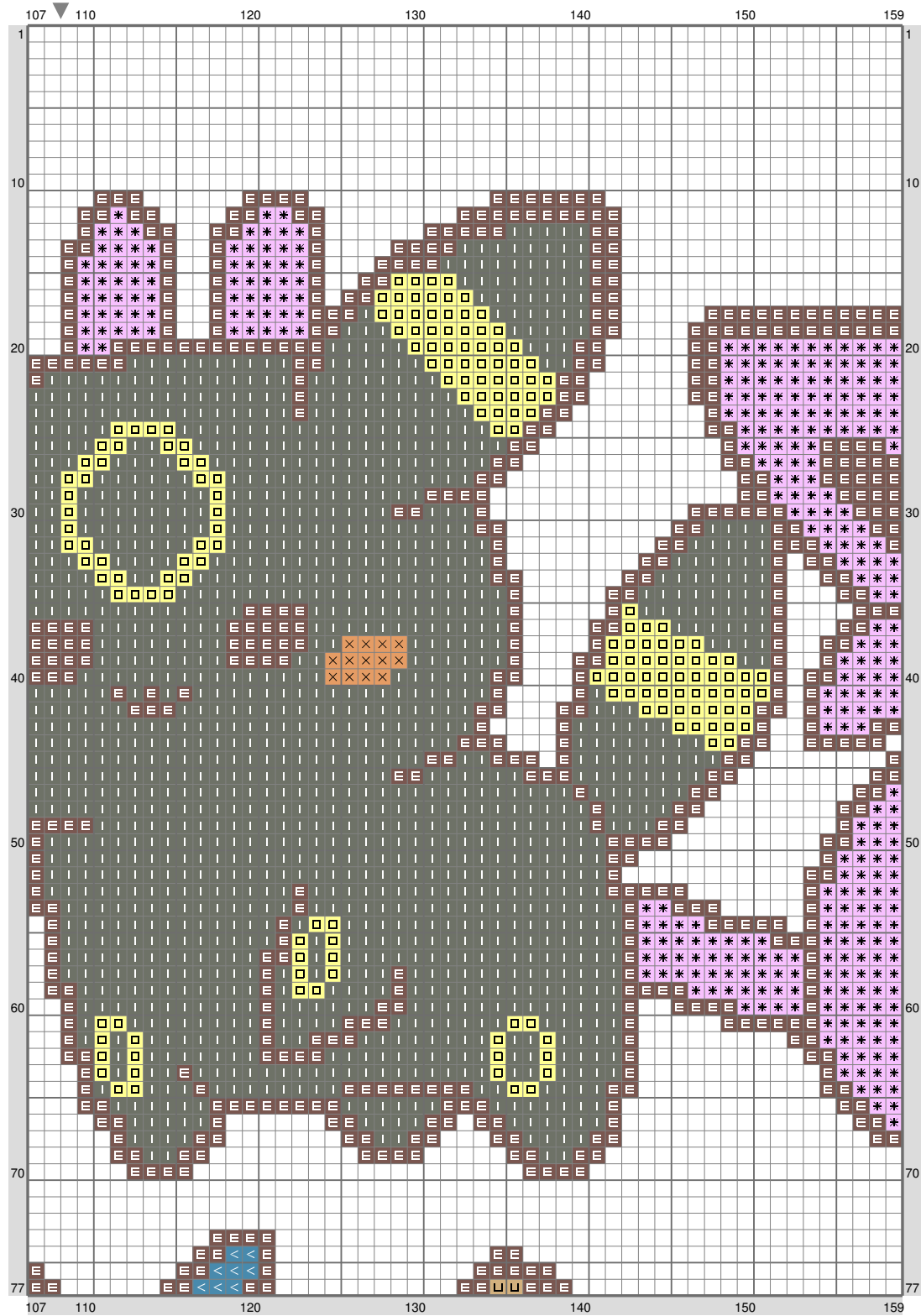
(This chart is printed using KG-Chart LE for Cross Stitch.)

AllTheEvees

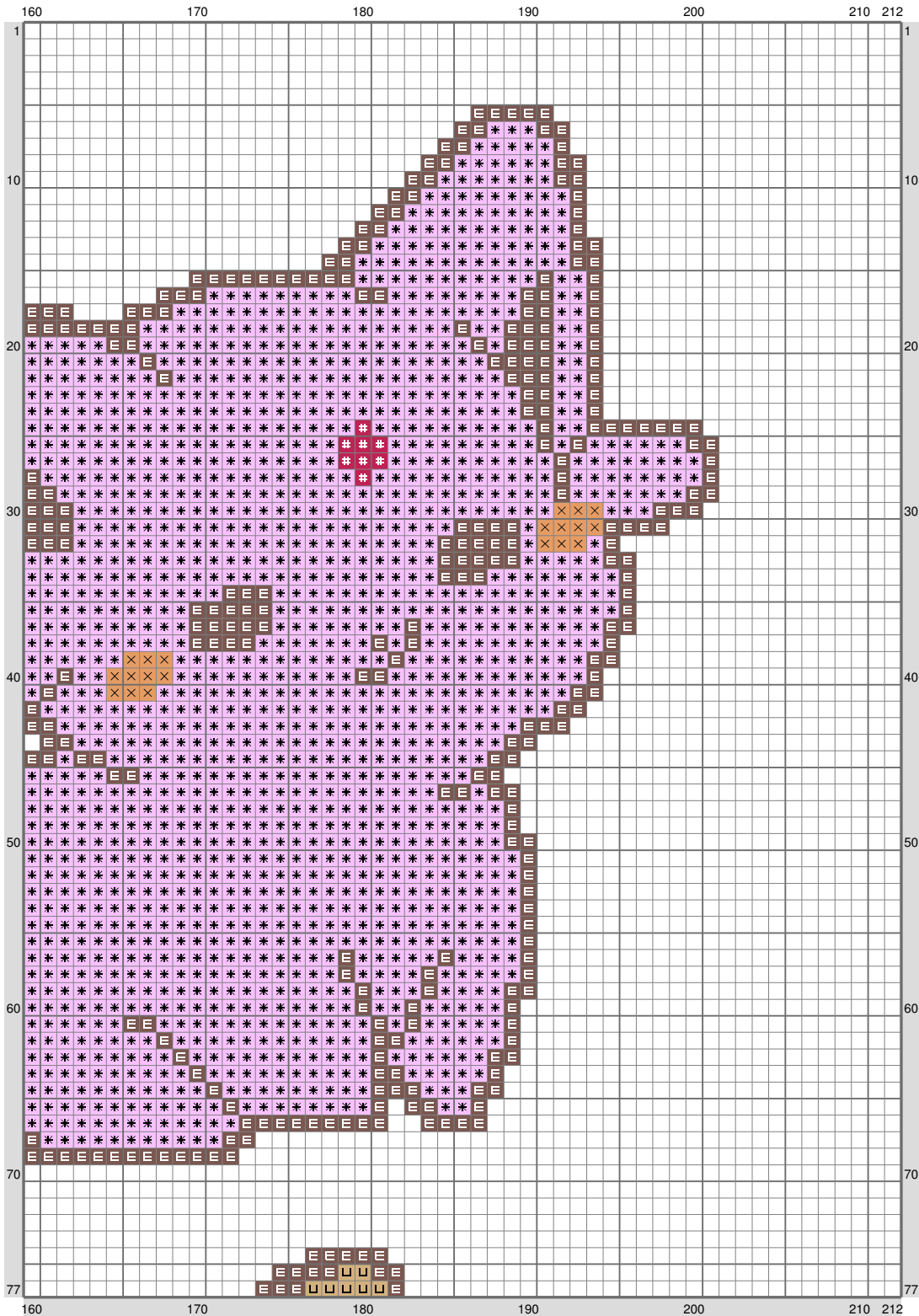


(This chart is printed using KG-Chart LE for Cross Stitch.)

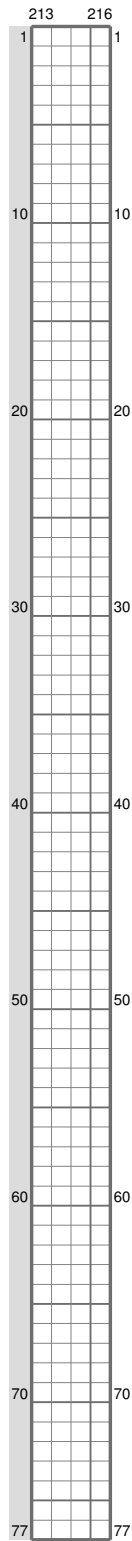
AllTheEvees



AllTheEevees

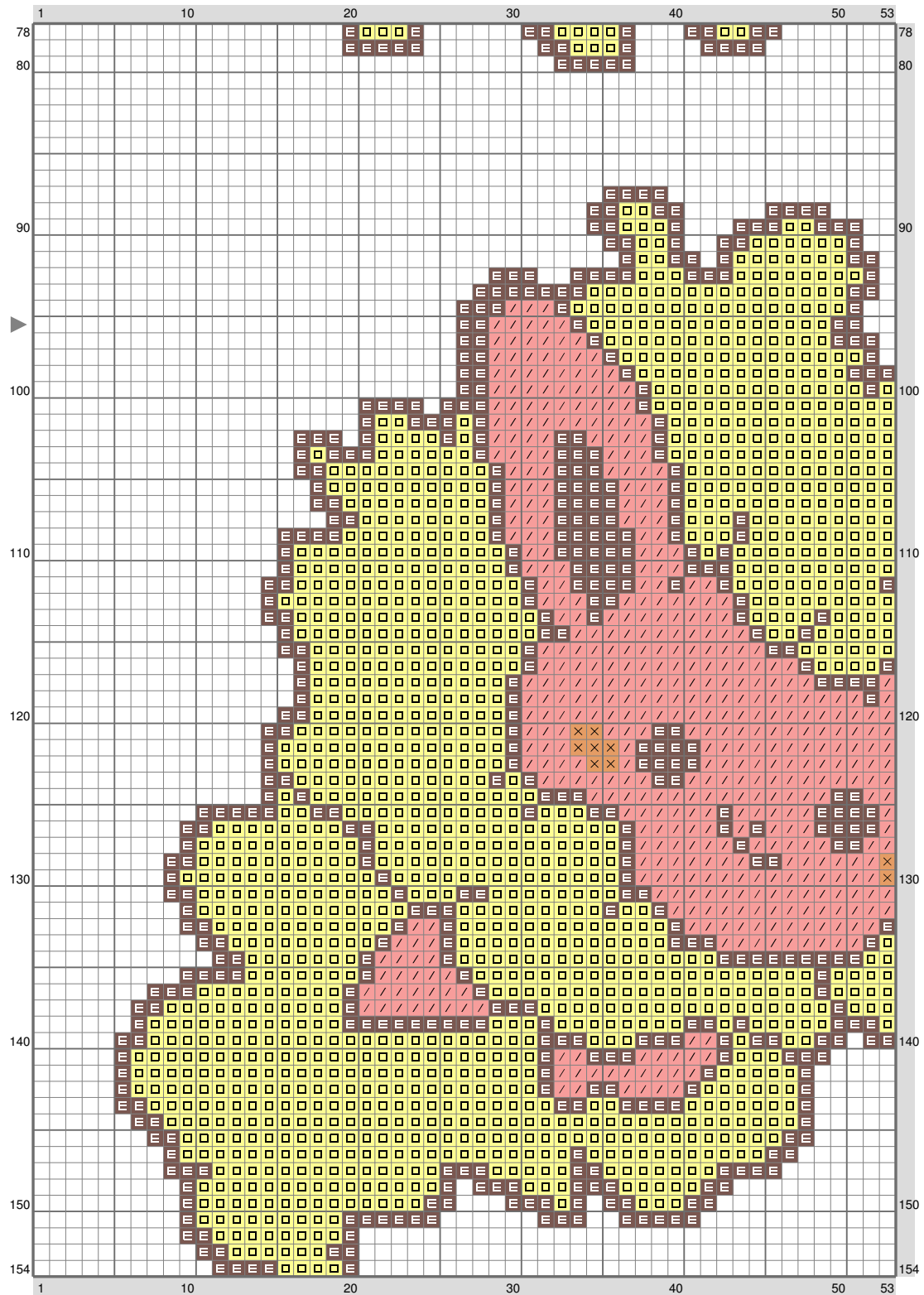


AllTheEvees



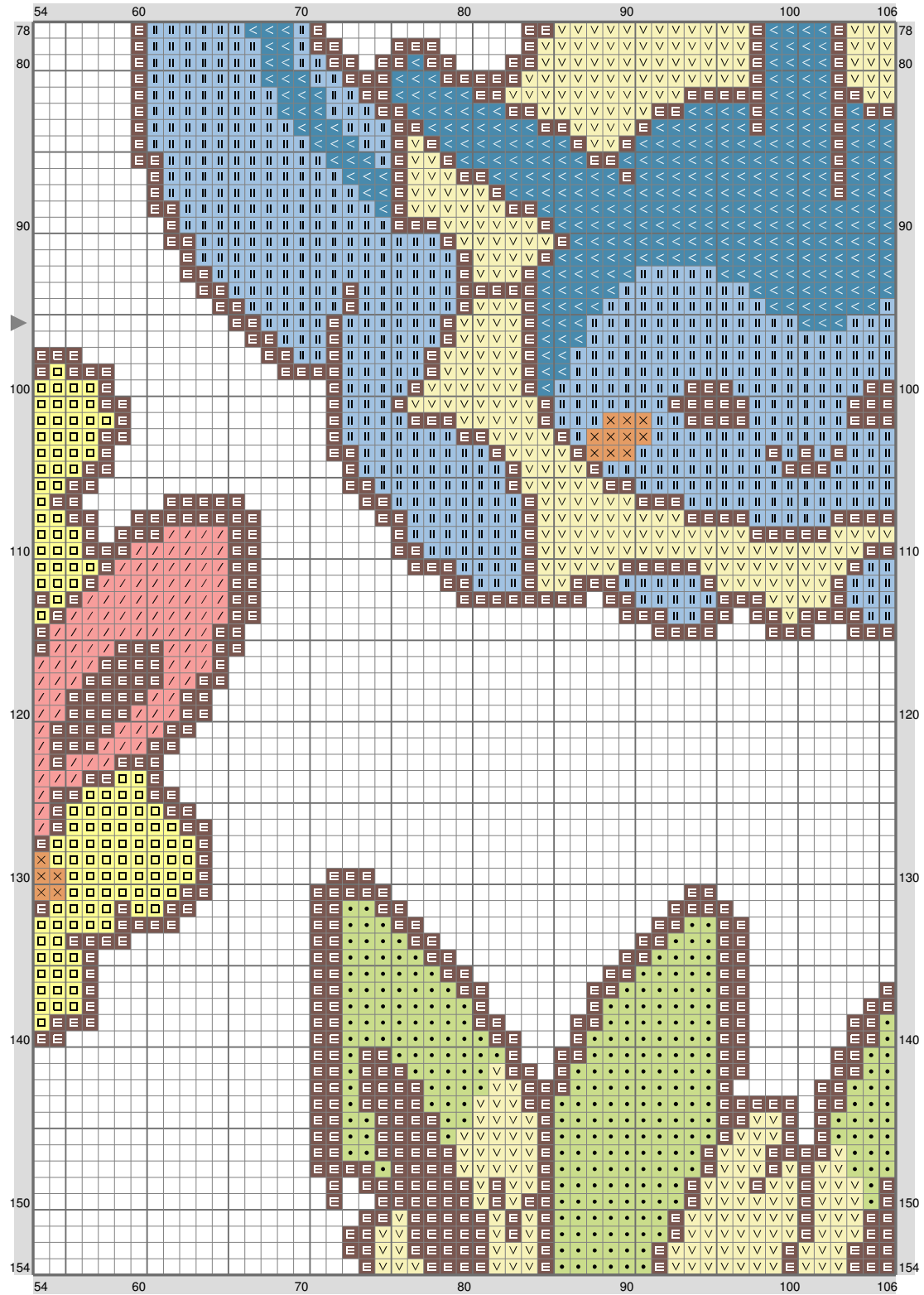
(This chart is printed using KG-Chart LE for Cross Stitch.)

AllTheEevees



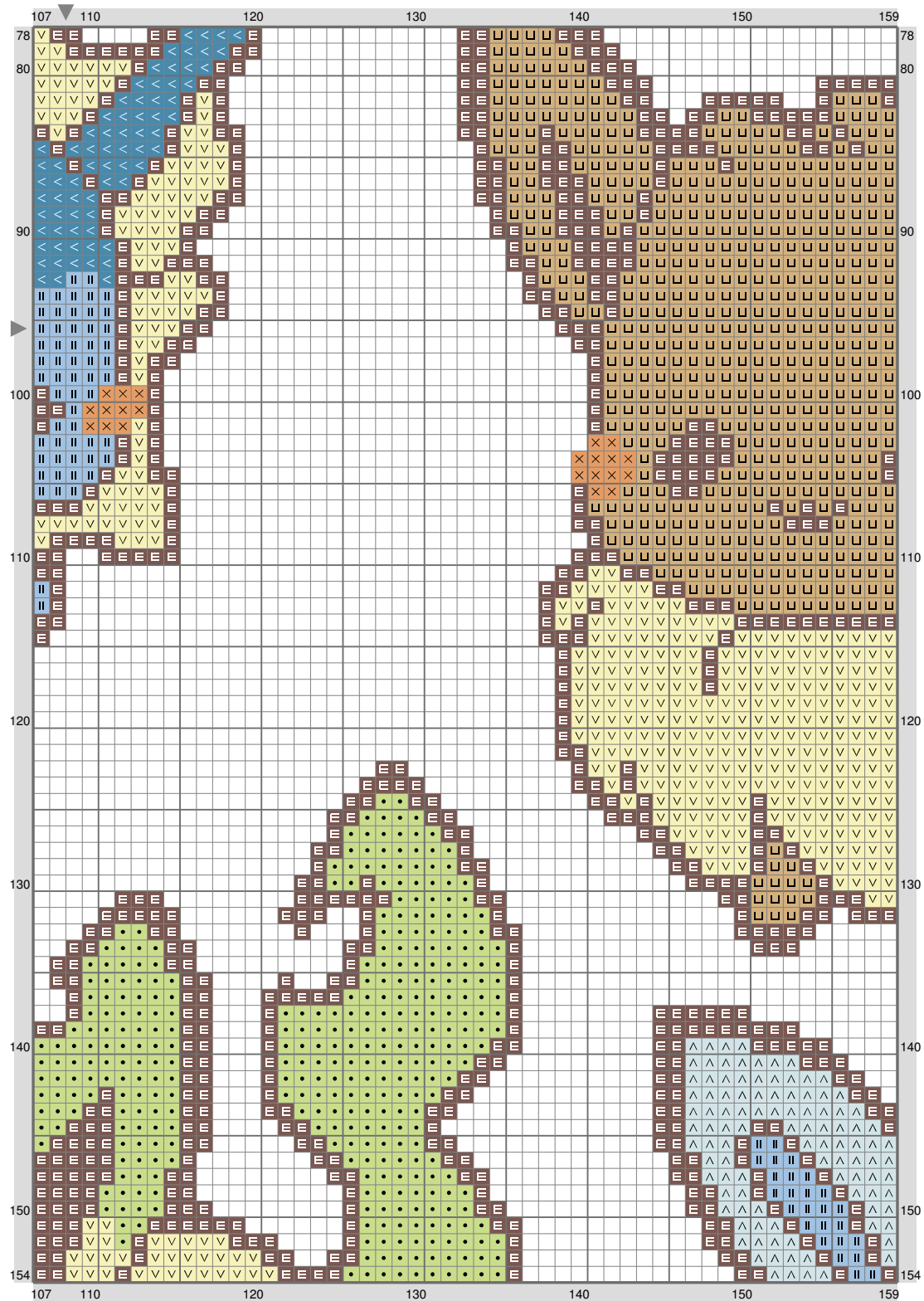
(This chart is printed using KG-Chart LE for Cross Stitch.)

AllTheEvees



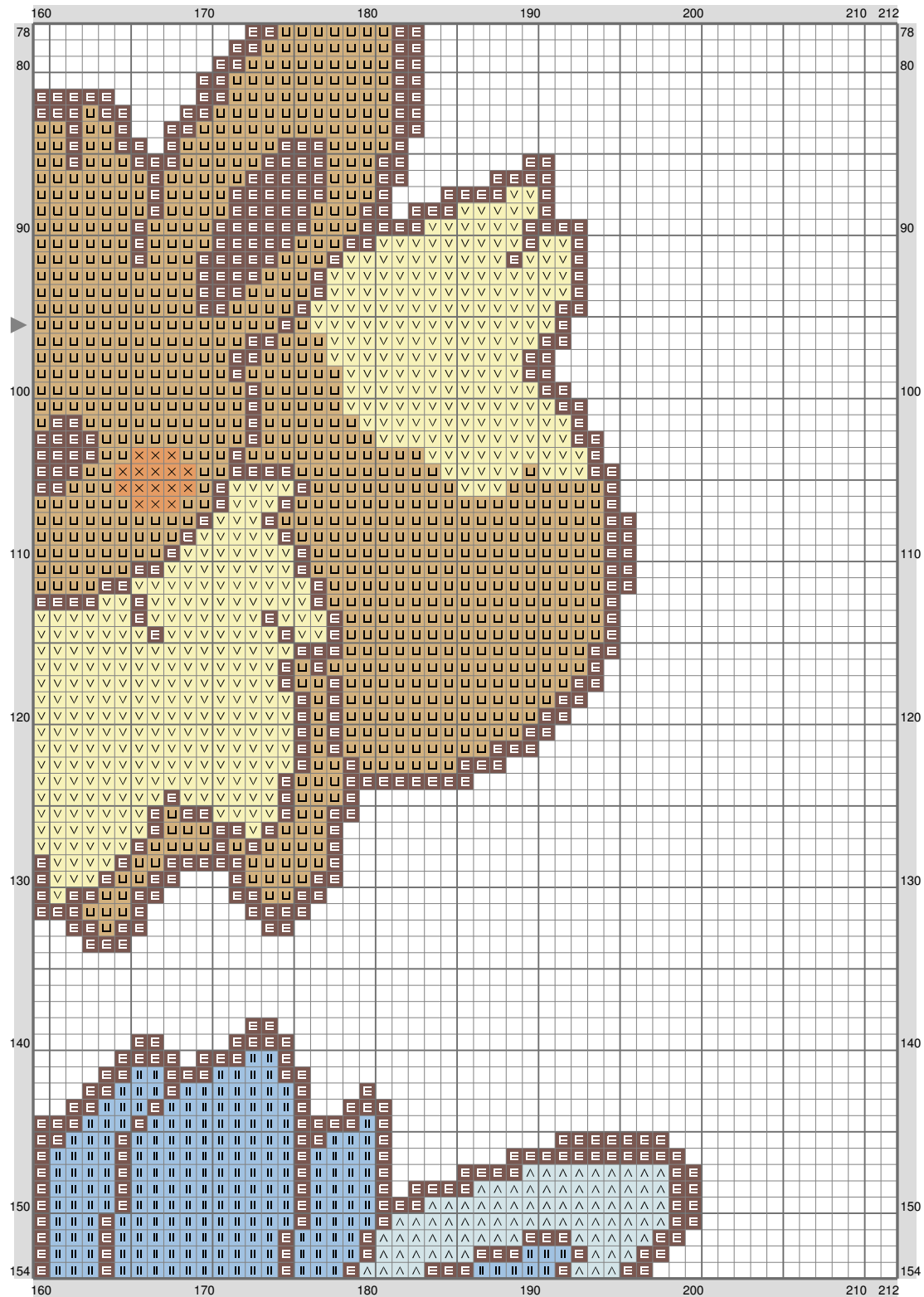
(This chart is printed using KG-Chart LE for Cross Stitch.)

AllTheEvees



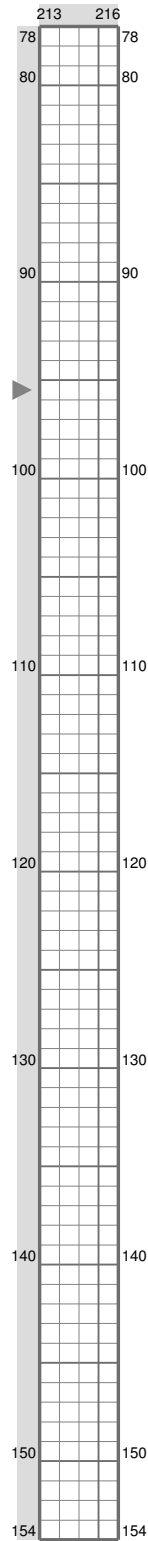
(This chart is printed using KG-Chart LE for Cross Stitch.)

AllTheEevees



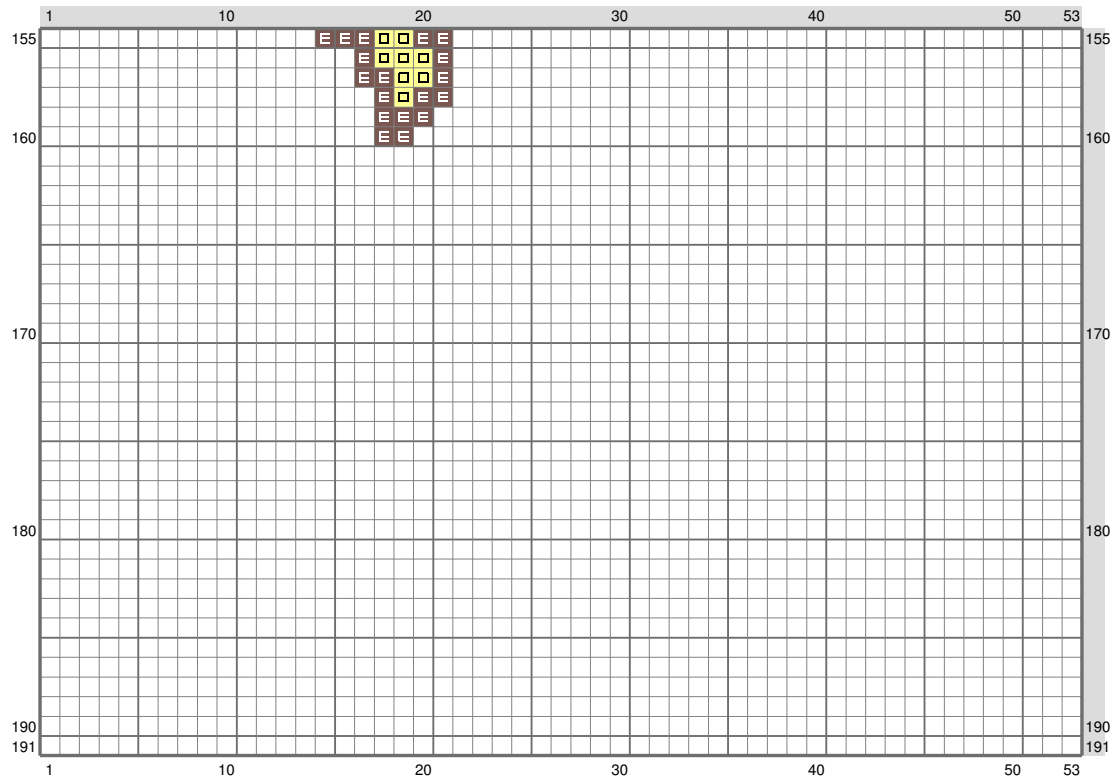
(This chart is printed using KG-Chart LE for Cross Stitch.)

AllTheEvees

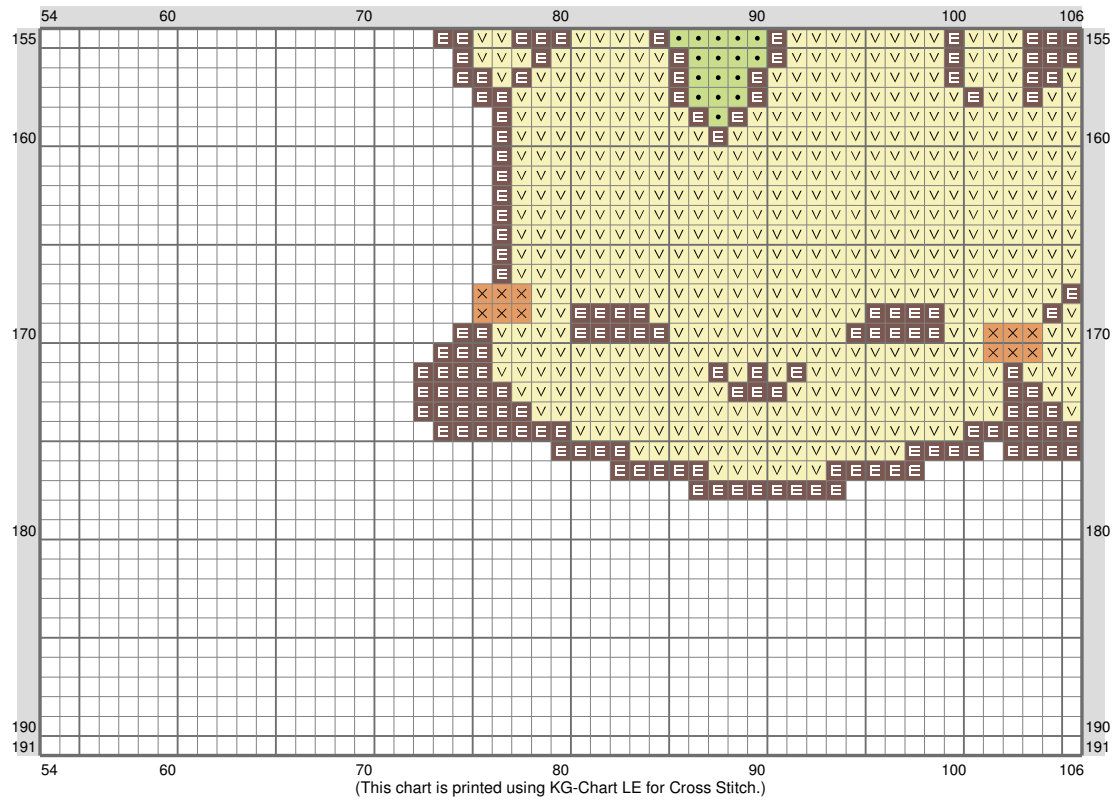


(This chart is printed using KG-Chart LE for Cross Stitch.)

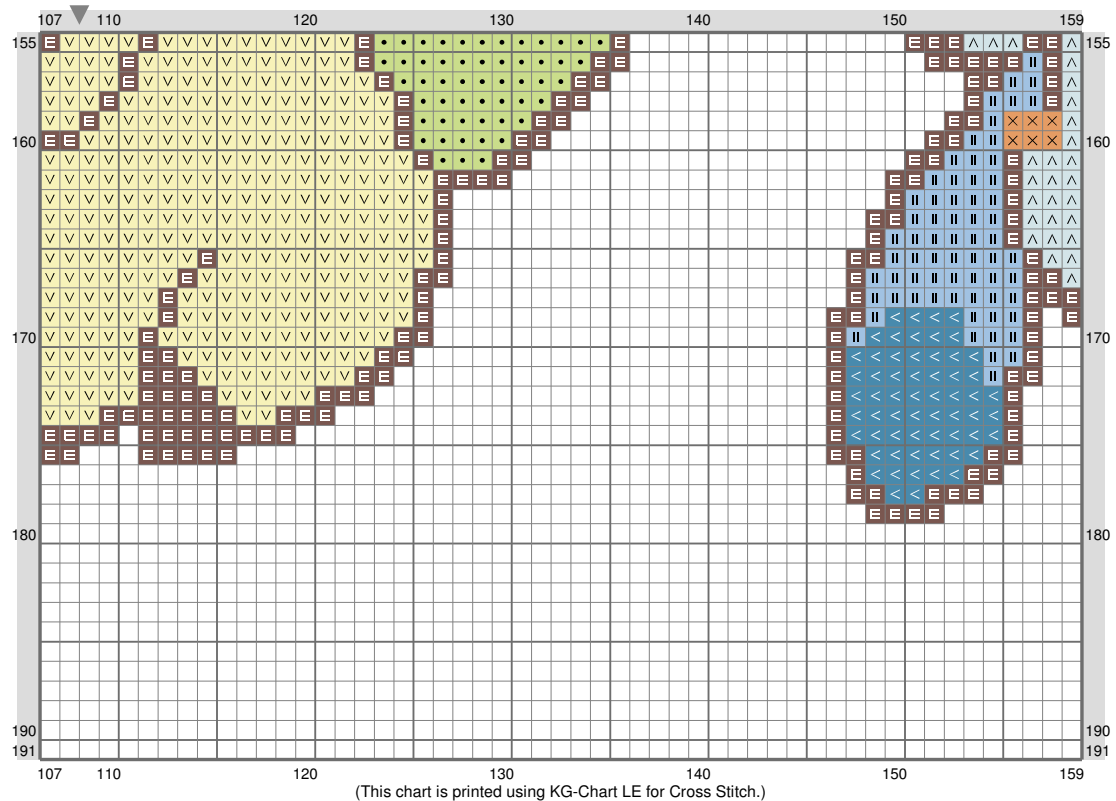
AllTheEvees



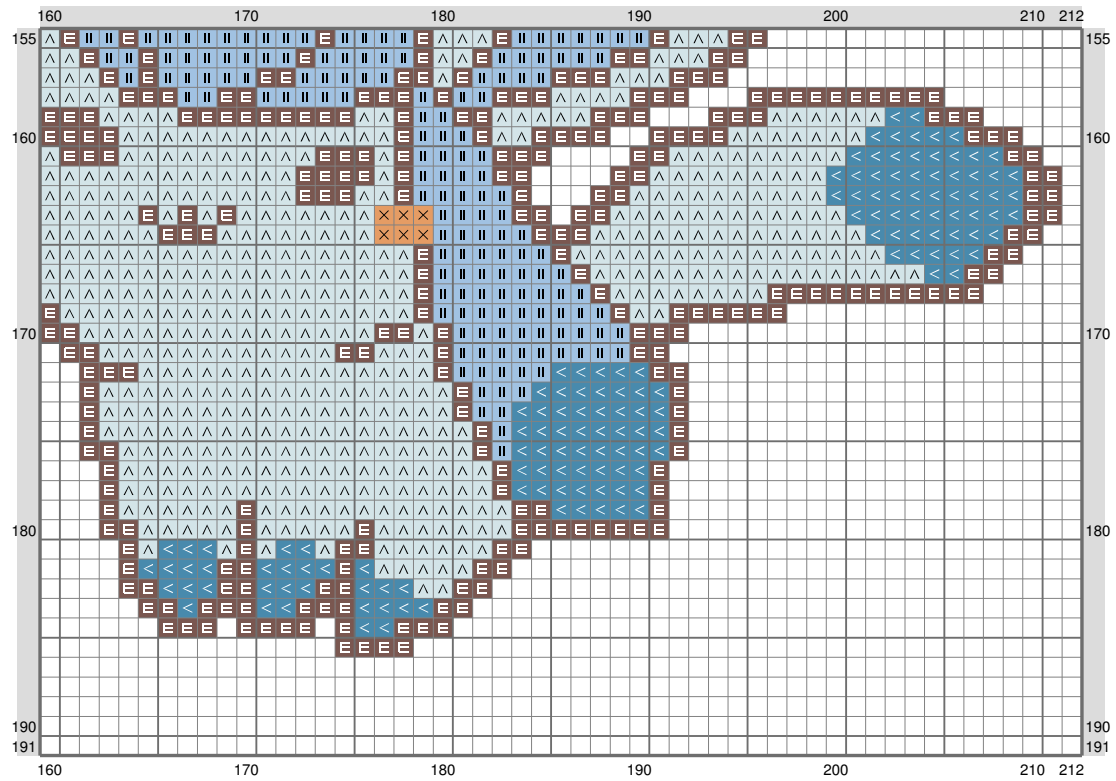
AllTheEvees



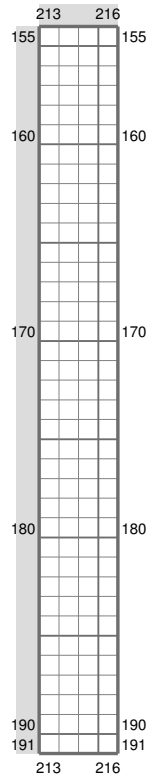
AllTheEvees



AllTheEvees



AllTheEvees



Stitch Count: 216w x 191h
 Finished Size: 60.96 cm x 53.90 cm (18 ct./inch)
 Cloth: Aida
 Cloth's Color: White
 # of colors: 14 Colors

Color Table (DMC)

Cross Stitch

	839	(4726 ct)
	445	(2952 ct)
	B5200	(332 ct)
	976	(143 ct)
	153	(1869 ct)
	645	(1576 ct)
	777	(8 ct)
	3348	(694 ct)
	3078	(2170 ct)
	3753	(733 ct)
	813	(1297 ct)
	3760	(670 ct)
	422	(1336 ct)
	3340	(599 ct)

(This chart is printed using Red-Chart LE for Cross-Stitch.)